



REV.	DATE	DCN #	DRAWING TREE #
A	7 MAY 2008	E080186-00-D	
B	30 MAY 2008	E080195-00-D	
C	12 AUG 2008	E080427-00-D	

ITEM NO.	REQ	SPARE	TOTAL	PART NUMBER	DESCRIPTION	MATERIAL
27	9	4	13	D060416	OSEM MAGNET AND FLAG CONCEPT	--
26	2	0	2	--	SCREW, SOCKET HEAD CAP, #4-40 UNC-3A X 0.5 LONG, VENTED	Ag-PLATED 300 SSSL
25	9	2	11	D070020	MAGNET HOLDER	6061-T6 Al
24	2	0	2	--	FLANGE NUT, 1/4-20	300 SSSL
23	2	0	2	--	JAM NUT, 1/4	300 SSSL
22	2	0	2	--	SCREW, SOCKET HEAD CAP, 1/4-20 UNC-2A X 1.125 LONG	Ag-PLATED 300 SSSL
21	4	1	5	--	HEX NUT, #4-40	300 SSSL
20	4	1	5	--	SCREW, SOCKET HEAD CAP, #4-40 UNC-2A X 0.75 LONG	Ag-PLATED 300 SSSL

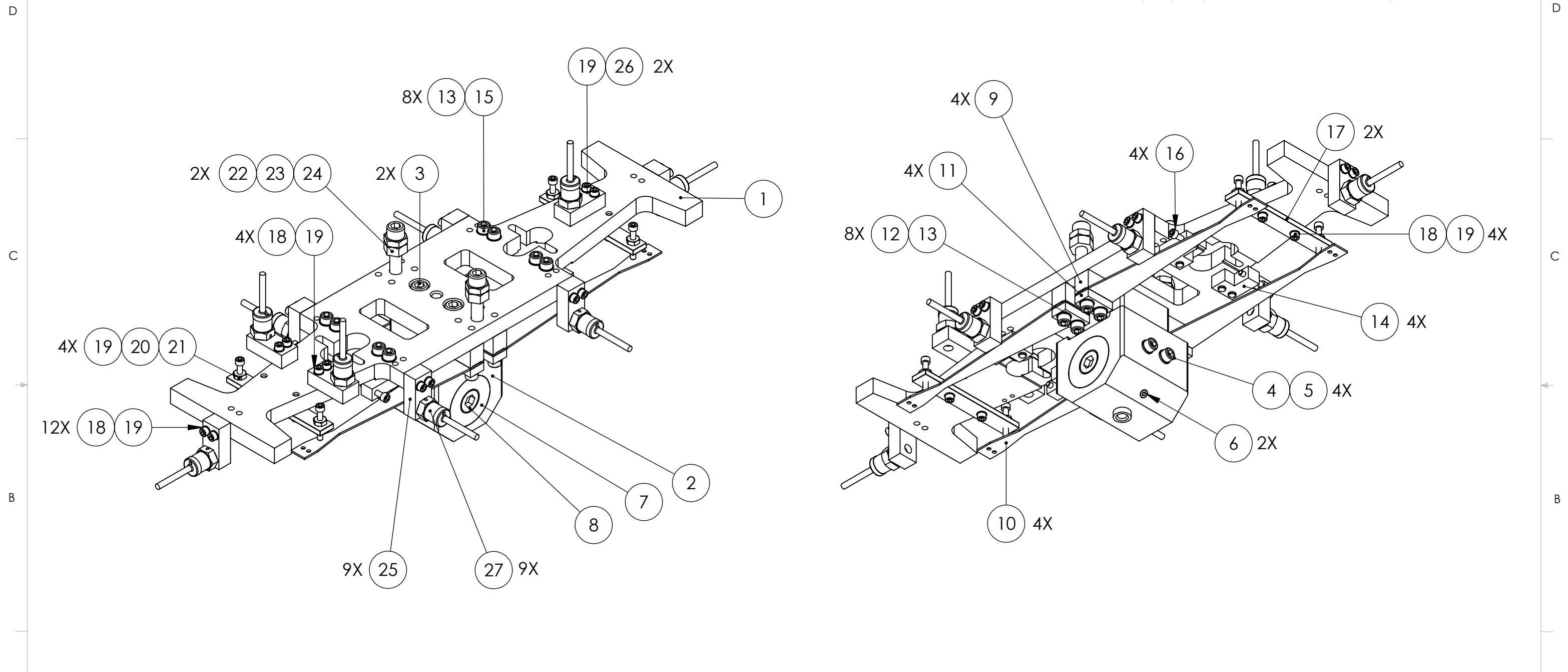
ITEM NO.	REQ	SPARE	TOTAL	PART NUMBER	DESCRIPTION	MATERIAL
19	26	5	31	--	WASHER, FLAT, #4 (NAS 620-C4L OR EQUIVALENT)	300 SSSL
18	20	4	24	--	SCREW, SOCKET HEAD CAP, #4-40 UNC-2A X 0.5 LONG	Ag-PLATED 300 SSSL
17	2	0	2	D070045	LOWER BLADE COVER	304 SSSL
16	4	1	5	--	SCREW, SOCKET HEAD CAP, #4-40 UNC-2A X 0.625 LONG	300 SSSL
15	8	2	10	--	SCREW, SOCKET HEAD CAP, #8-32 UNC-2A X 0.75 LONG	300 SSSL
14	4	1	5	D020482	UPPER MASS SCREW DRIVE SYSTEM	6061-T6-Al
13	16	3	19	--	WASHER, FLAT, #8 (NAS 620-C8L OR EQUIVALENT)	300 SSSL
12	8	2	10	--	SCREW, SOCKET HEAD CAP, #8-32 UNC-2A X 1 LONG	Ag-PLATED 300 SSSL
11	4	1	5	D020308	LOWER BLADE CLAMP, LOWER SIDE	304 SSSL
10	4	2	6	D080019	LOWER BLADE	MARAGING STEEL C250
9	4	1	5	D070031	LOWER BLADE CLAMP, UPPER SIDE	304 SSSL
8	1	0	1	--	SCREW, SOCKET SET, 1/2-20 X 2 LONG	Ag-PLATED 300 SSSL
7	1	0	1	D060503	PITCH INSERT, T-SECTION	304 SSSL
6	2	0	2	--	SCREW, SOCKET SET, #8-32 UNC-2A X 0.375 LONG	Ag-PLATED 300 SSSL
5	4	1	5	--	WASHER, FLAT, #8 (NAS 620-C8 OR EQUIVALENT)	300 SSSL
4	4	1	5	--	SCREW, SOCKET HEAD CAP, #8-32 UNC-2A X 0.375 LONG	Ag-PLATED 300 SSSL
3	2	0	2	--	SCREW, SOCKET HEAD CAP, 1/4-20 UNC-2A X 0.5 LONG	Ag-PLATED 300 SSSL
2	1	0	1	D070032	T-SECTION, UPPER MASS	304 SSSL
1	1	0	1	D060491	MAIN SECTION, UPPER MASS, OMC	304 SSSL


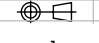
PARTS LIST

NOTES: (UNLESS OTHERWISE SPECIFIED)

DIMENSIONS ARE IN INCHES		 CALIFORNIA INSTITUTE OF TECHNOLOGY MASSACHUSETTS INSTITUTE OF TECHNOLOGY IGR, GLASGOW UNIVERSITY GEO 600 GROUP						
TOLERANCES: .XX ± 0.01 .XXX ± 0.005								
ANGULAR ± 0.5 °		SYSTEM ADVANCED LIGO						
MATERIAL		SUB-SYSTEM SUS						
FINISH		NEXT ASSY OMC (D080125)						
<table border="1"> <tr> <th>NAME</th> <th>DATE</th> </tr> <tr> <td>D. BRIDGES</td> <td>29 MAY 2008</td> </tr> <tr> <td>M. MEYER</td> <td>29 MAY 2008</td> </tr> </table>		NAME	DATE	D. BRIDGES	29 MAY 2008	M. MEYER	29 MAY 2008	PART NAME UPPER MASS ASSEMBLY
NAME	DATE							
D. BRIDGES	29 MAY 2008							
M. MEYER	29 MAY 2008							
DRAWN	D. BRIDGES	SIZE DWG. NO. D060502						
CHECKED	M. MEYER	REV. C						
APPROVED		SCALE: 1:2 PROJECTION:  SHEET 1 OF 2						

REV.	DATE	DCN #	DRAWING TREE #
A	7 MAY 2008	E080186-00-D	
B	30 MAY 2008	E080195-00-D	
C	12 AUG 2008	E080427-00-D	



PARTS LIST															
NOTES: (UNLESS OTHERWISE SPECIFIED)															
DIMENSIONS ARE IN INCHES		 CALIFORNIA INSTITUTE OF TECHNOLOGY MASSACHUSETTS INSTITUTE OF TECHNOLOGY IGR, GLASGOW UNIVERSITY GEO 600 GROUP													
TOLERANCES: .XX ± 0.01 .XXX ± 0.005		SYSTEM ADVANCED LIGO													
ANGULAR ± 0.5 °		SUB-SYSTEM SUS													
MATERIAL		NEXT ASSY OMC (D080125)													
FINISH		PART NAME													
---		UPPER MASS ASSEMBLY													
<table border="1"> <thead> <tr> <th></th> <th>NAME</th> <th>DATE</th> </tr> </thead> <tbody> <tr> <td>DRAWN</td> <td>D. BRIDGES</td> <td>29 MAY 2008</td> </tr> <tr> <td>CHECKED</td> <td>M. MEYER</td> <td>29 MAY 2008</td> </tr> <tr> <td>APPROVED</td> <td></td> <td></td> </tr> </tbody> </table>			NAME	DATE	DRAWN	D. BRIDGES	29 MAY 2008	CHECKED	M. MEYER	29 MAY 2008	APPROVED			SIZE DWG. NO. D060502 REV. C SCALE: 1:2 PROJECTION:  SHEET 2 OF 2	
	NAME	DATE													
DRAWN	D. BRIDGES	29 MAY 2008													
CHECKED	M. MEYER	29 MAY 2008													
APPROVED															