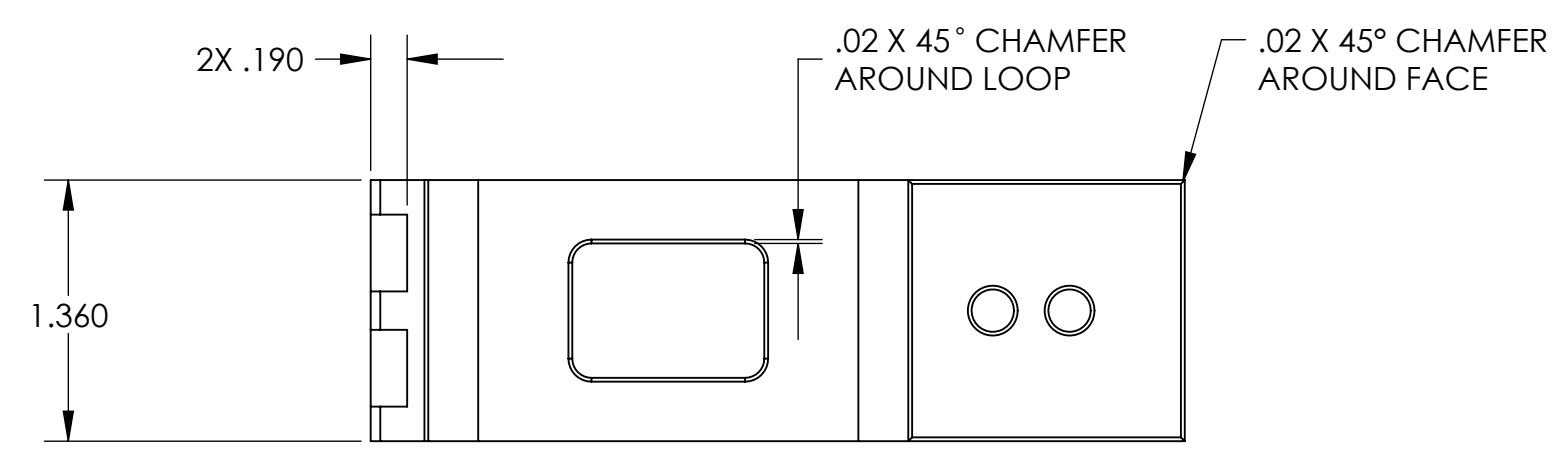
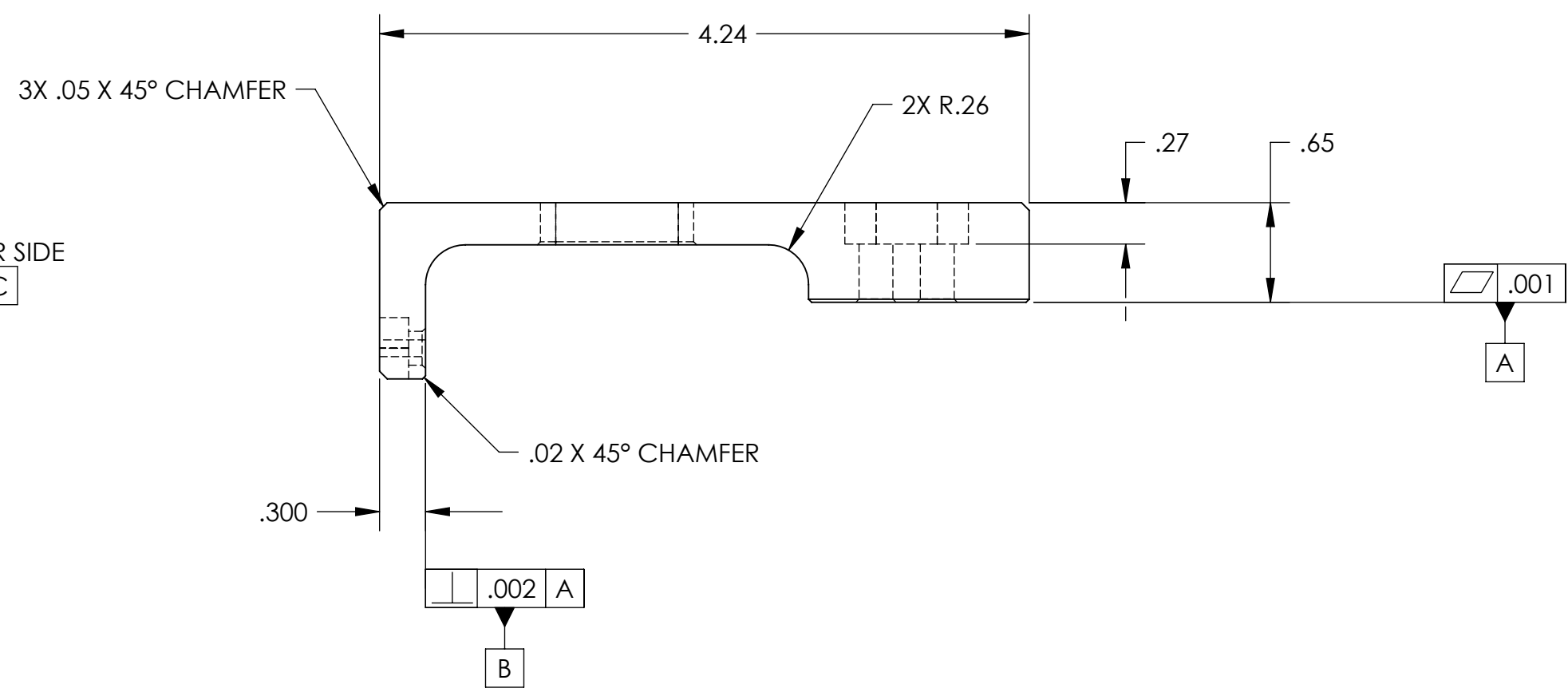
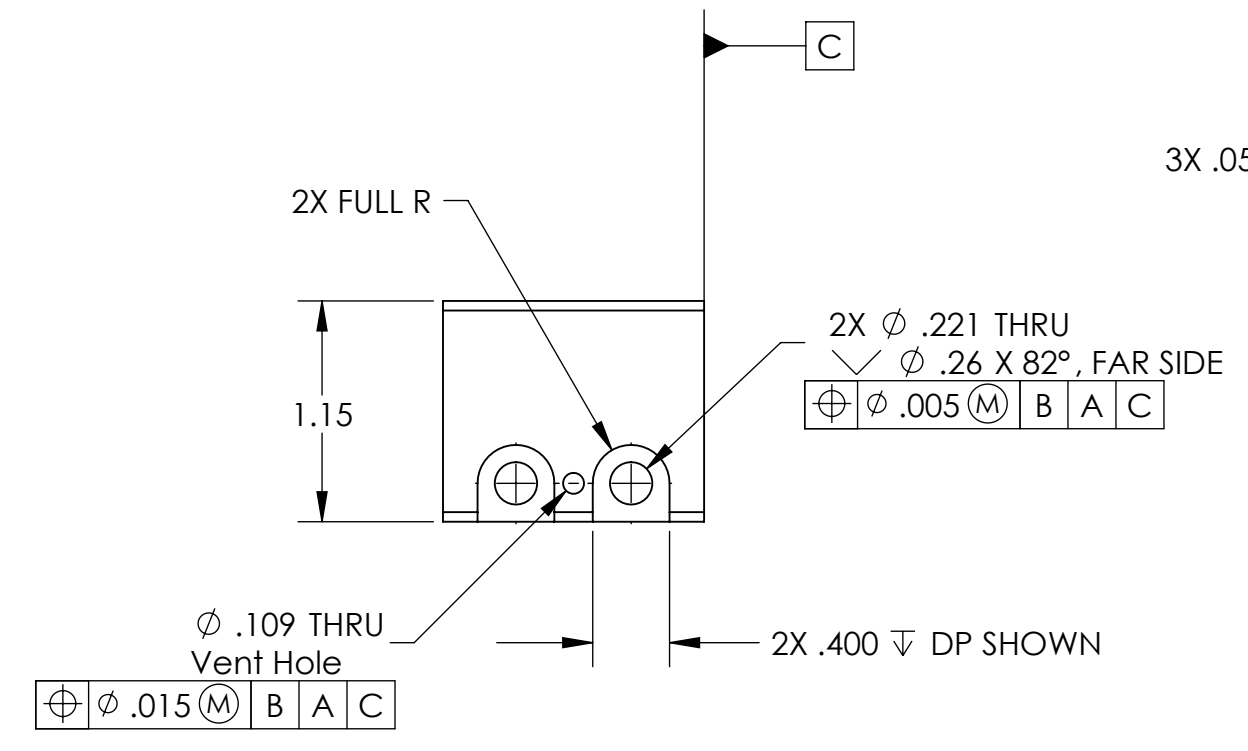
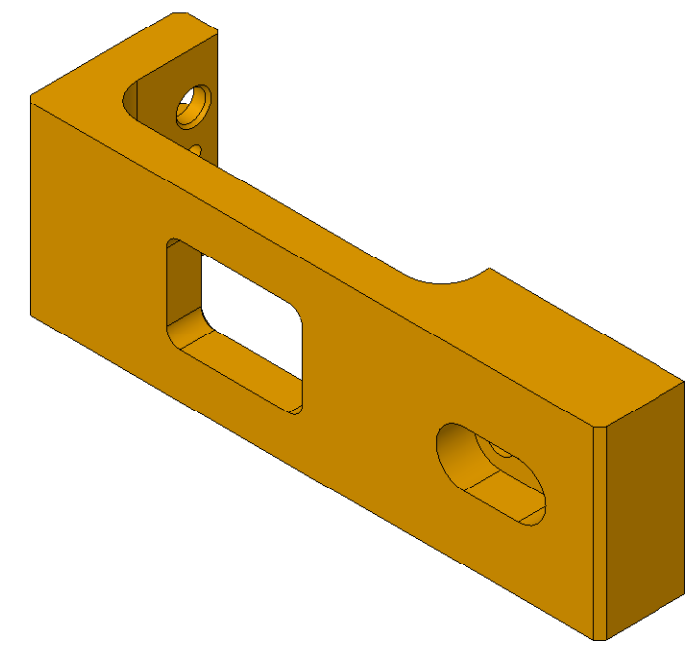
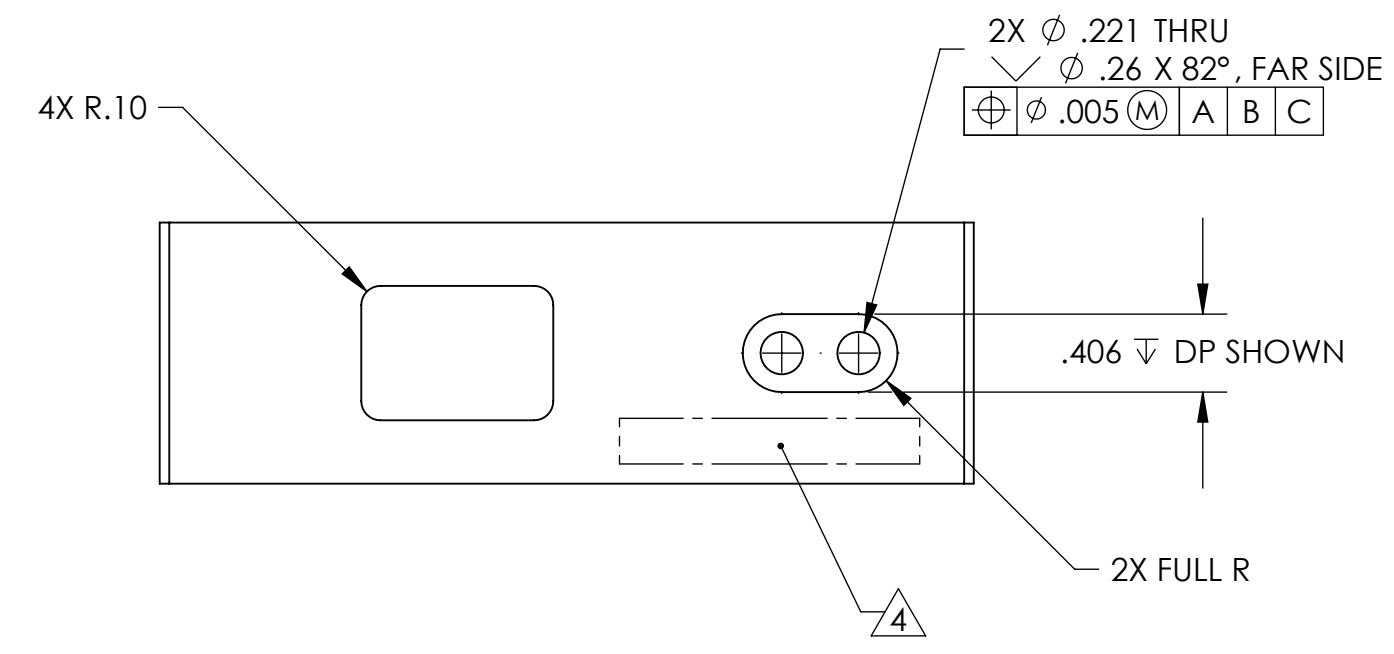


REVISION HISTORY				
REV	DATE	ECO	APPROVAL	DESCRIPTION
V1 / C	17 Sep 2007	1072	D. Senders	Release for Enhanced LIGO.
V2	2 Apr 2009		A. Stein	Release for Advanced LIGO. Increased width and thickness. Changed c bores to slots. Changed chamfer details. Added c/sinks.



MACHINING NOTES:

- 1) MACHINE ALL SURFACES TO REMOVE OXIDES AND MILL FINISH. ABRASIVE REMOVAL TECHNIQUES (OTHER THAN DRESSED BLANCHARD GRINDING) ARE NOT ACCEPTABLE.
- 2) ALL MACHINING FLUIDS MUST BE WATER SOLUBLE AND FREE OF SULFUR, CHLORINE, AND SILICONE, SUCH AS CINCINNATI MILACRON CIMTECH 410.
- 3) THOROUGHLY CLEAN PART TO REMOVE ALL OIL, GREASE, DIRT, AND CHIPS.
- 4) WHERE INDICATED, MECHANICALLY SCRIBE, STAMP, OR ENGRAVE THE FOLLOWING INFORMATION AS SHOWN BELOW: **PART NUMBER-REVISION** (AND **TYPE** IF INDICATED), FOLLOWED ON THE NEXT LINE WITH A UNIQUE 3-DIGIT **SERIAL NUMBER** STARTING AT 001 FOR THE FIRST PART AND INCREMENTING THEREAFTER. USE 0.38" TALL CHARACTERS UNLESS PART SIZE DICTATES SMALLER.

D071123-V2
S/N - ###

POST-MACHINING NOTES:

- P1) CLEAN TO LIGO STANDARDS, CLASS A.

APPROVALS	DATE
ENGINEERING (HPD): D. Senders	7/31/2007
QUALITY (HPD): C. Danaher	7/31/2007
MATERIAL: OFHC Copper	
FINISH: None	
MASS: 0.8 lbs	

UNLESS OTHERWISE SPECIFIED:		
DIMENSIONS ARE IN INCHES		
DECIMAL TOLERANCES:		
.XX	±.015	.XXX ±.005
ANG TOL: ± 1° SURFACE ROUGHNESS: 63		
REMOVE ALL SHARP EDGES. LEAVE .005 X 45° MIN CHAMFER, OR .005 MIN RADIUS.		
THIS PRINT & THE EMBEDDED CAD MODEL ARE THE DOCUMENTATION OF RECORD, UNLESS OTHERWISE SPECIFIED. ALL DIMENSIONS IN THE MODEL ARE BASIC, WITH TOLERANCES GIVEN BY:		
$\frac{1}{4}$.010	A B C

ORIGINAL DESIGN BY:	High Precision Devices	MODIFIED BY:	LIGO
1468 Valtec Lane, Suite C, Boulder, Colorado 80301 Phone: (303) 447-2558 Fax: (303) 447-2548 Web Site: www.hpd-online.com			
DESCRIPTION:	Actuator Thermal Bar		
P/N: D071123	CONFIG:	-	
CAD FILE NAME: D071123_Actuator_Thermal_Bar			
PROJECT: HAM ISI, Advanced LIGO			
SIZE	SCALE: 1:1	DRAWN BY: Jonas Waterman (HPD)	REV
C	SHEET 1 OF 1	DATE PRINTED: 4/2/2009	V2