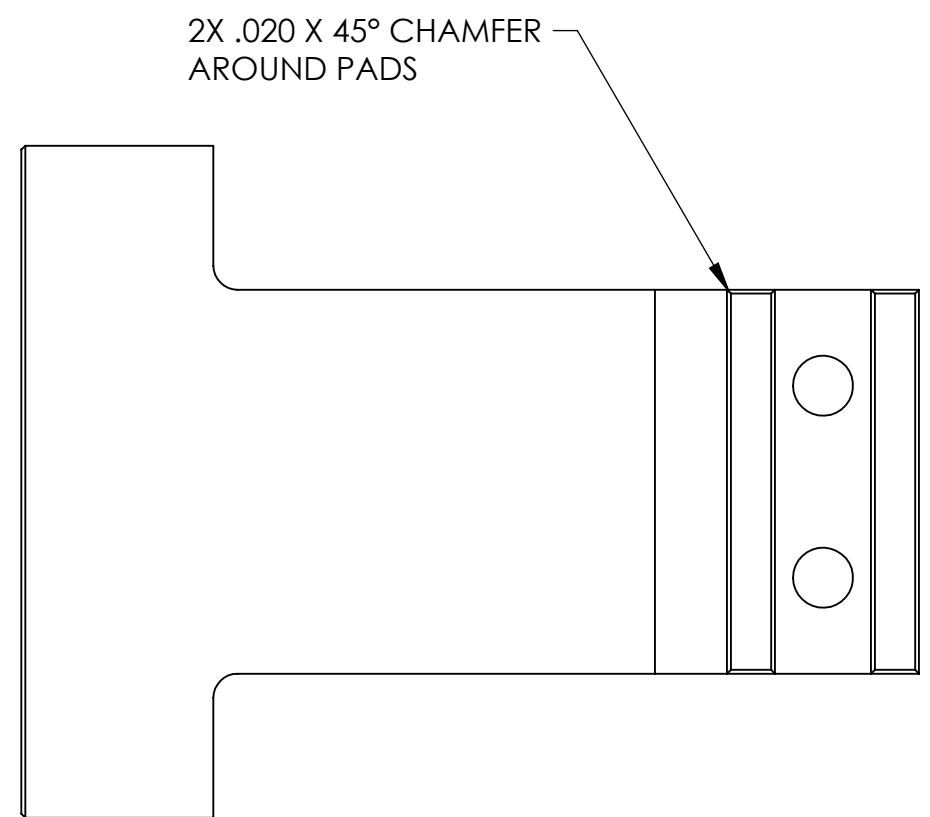
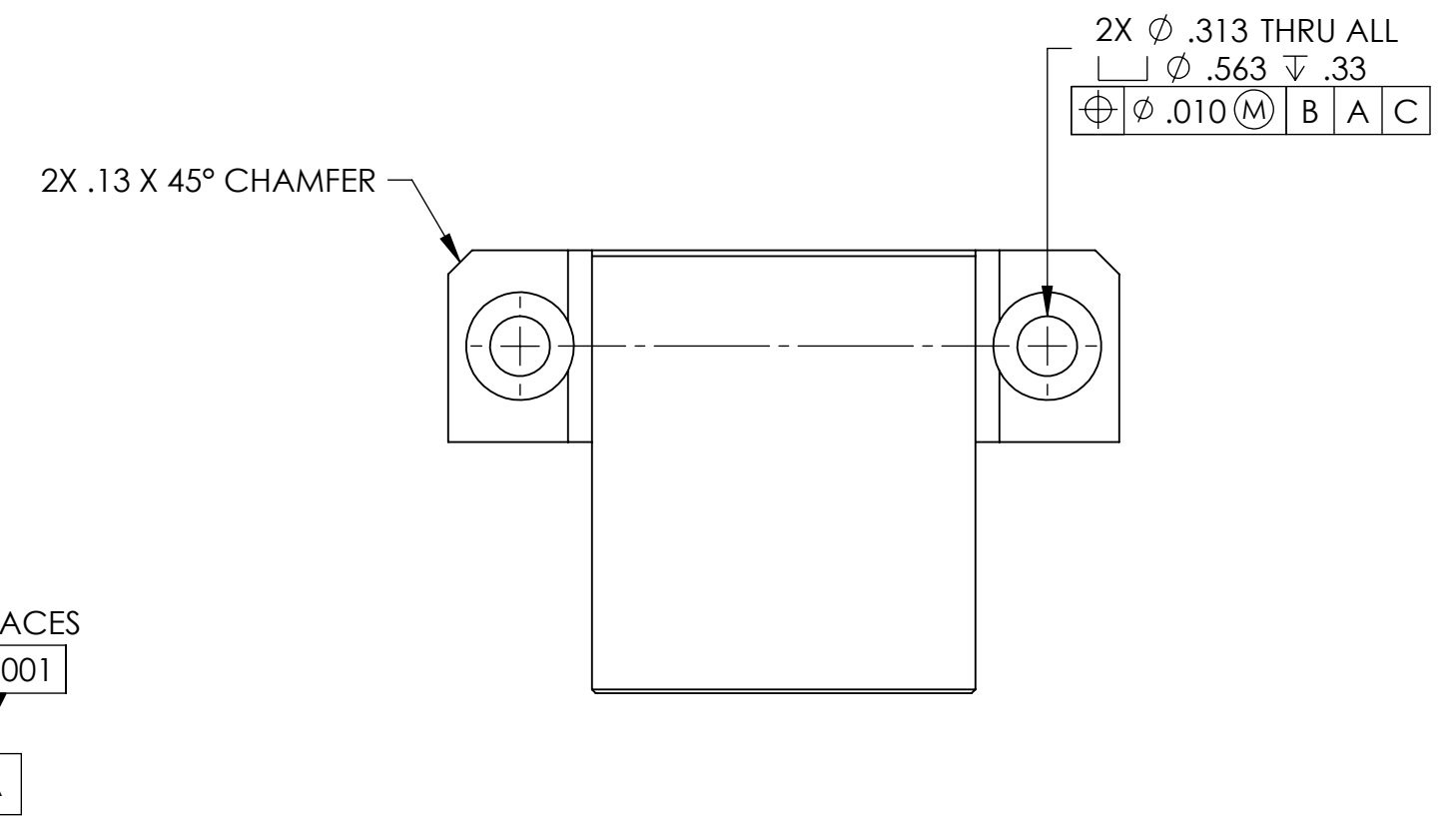
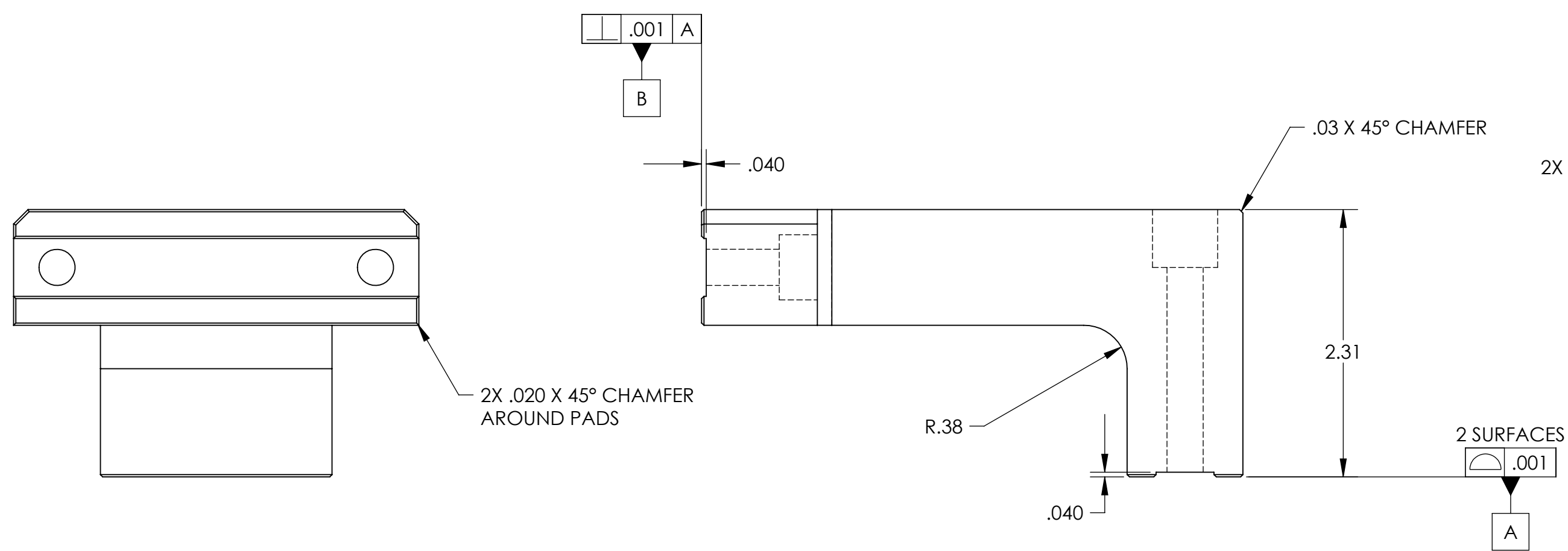
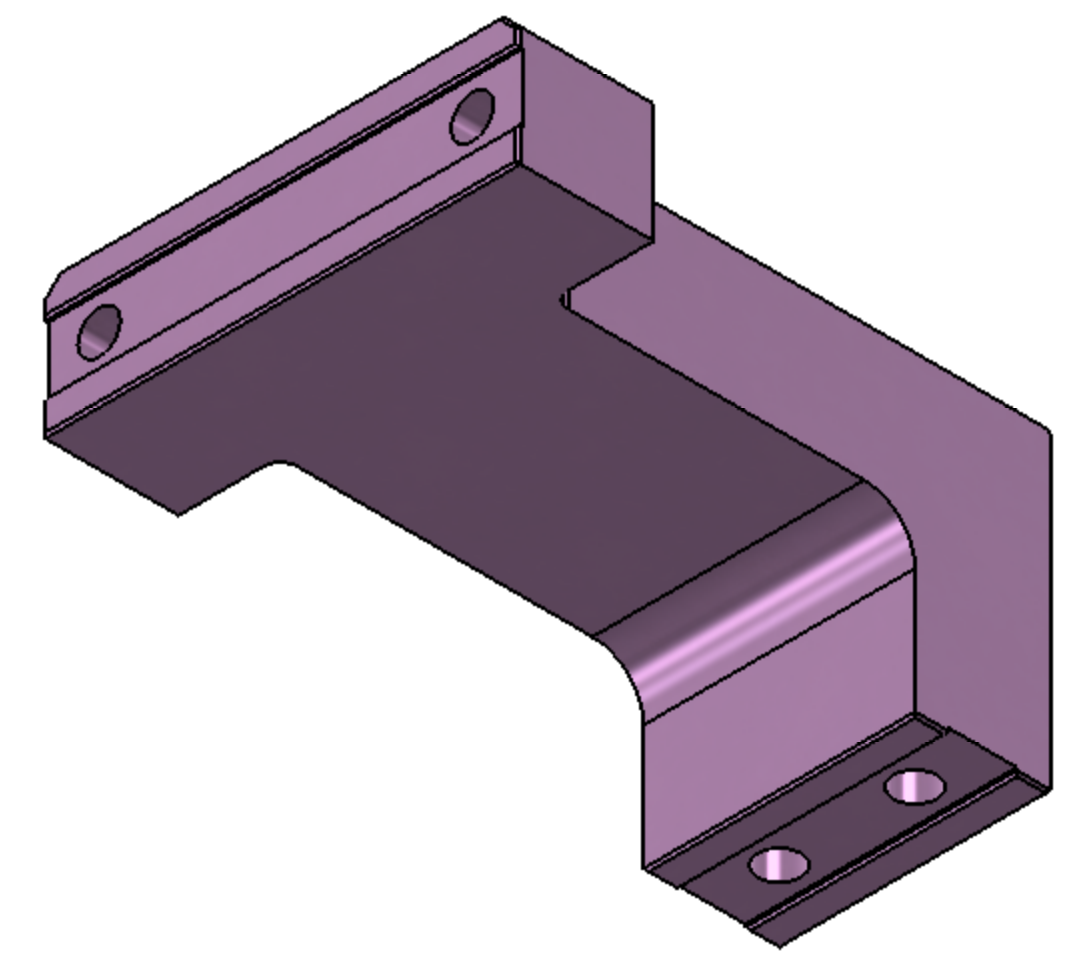
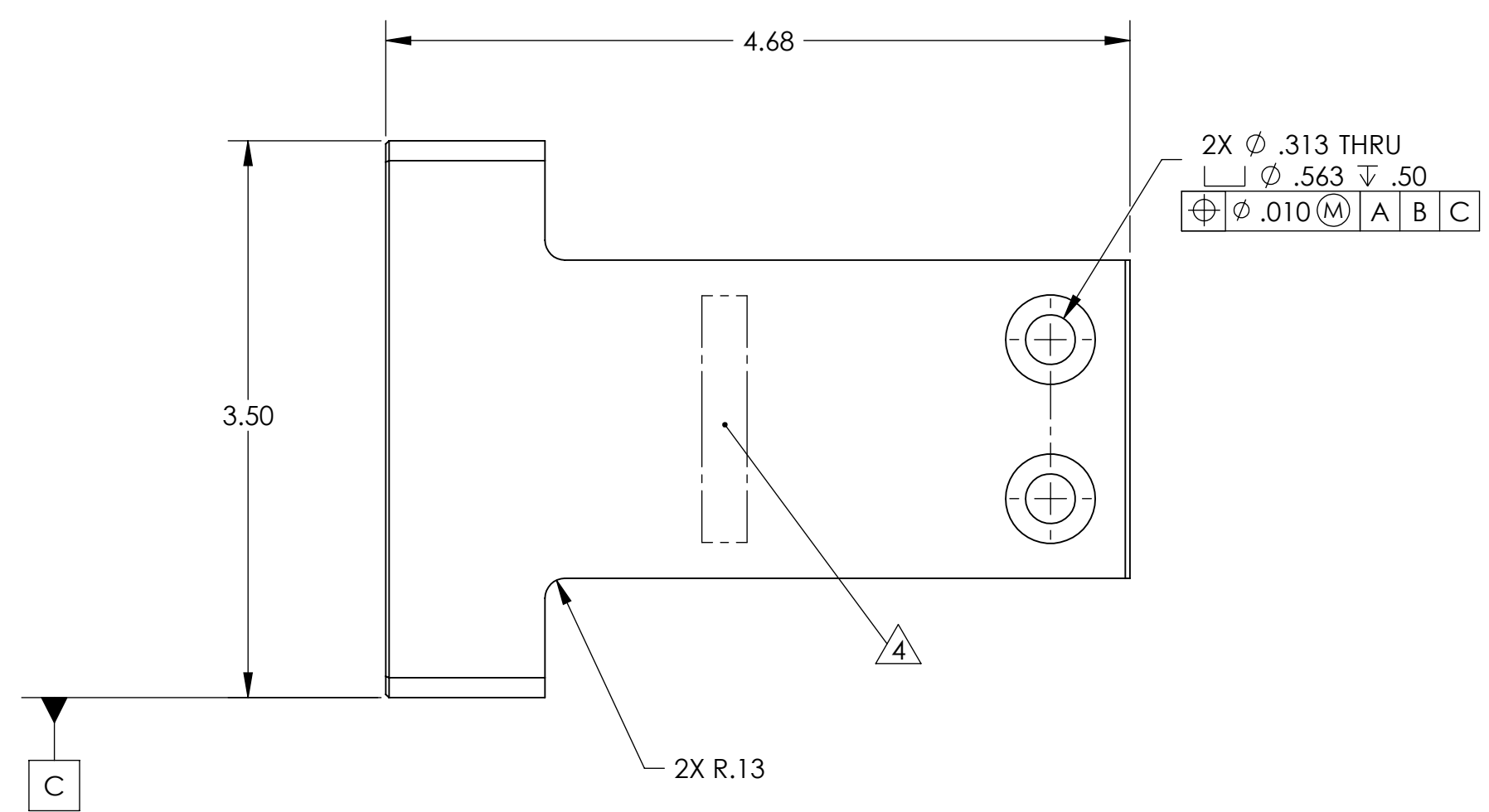


REVISION HISTORY				
REV	DATE	ECO	APPROVAL	DESCRIPTION
V1 / A	7 Aug 2007	1071	D. Senders	Release for Enhanced LIGO.
V2	17 Apr 2009		A. Stein	Release for Advanced LIGO. Added channels under 2 pairs of holes. Added chamfers. Modified c'bores.



- MANUFACTURING NOTES:
- 1) MACHINE ALL SURFACES TO REMOVE OXIDES AND MILL FINISH. ABRASIVE REMOVAL TECHNIQUES (OTHER THAN DRESSED BLANCHARD GRINDING) ARE NOT ACCEPTABLE.
  - 2) ALL MACHINING FLUIDS MUST BE WATER SOLUBLE AND FREE OF SULFUR, CHLORINE, AND SILICONE, SUCH AS CINCINNATI MILACRON CIMTECH 410.
  - 3) THOROUGHLY CLEAN PART TO REMOVE ALL OIL, GREASE, DIRT, AND CHIPS.
  - 4) WHERE INDICATED, MECHANICALLY SCRIBE, STAMP, OR ENGRAVE THE FOLLOWING INFORMATION AS SHOWN BELOW: **PART NUMBER-REVISION** (AND **TYPE** IF INDICATED), FOLLOWED ON THE NEXT LINE WITH A UNIQUE 3-DIGIT **SERIAL NUMBER** STARTING AT 001 FOR THE FIRST PART AND INCREMENTING THEREAFTER. USE 0.38" TALL CHARACTERS UNLESS PART SIZE DICTATES SMALLER.
- D071129-V2  
S/N - ###
- POST-MANUFACTURING NOTES:
- P1) CLEAN TO LIGO STANDARDS, CLASS B (PER E0900047 AND E960022).

APPROVALS		DATE	UNLESS OTHERWISE SPECIFIED: DIMENSIONS ARE IN INCHES DECIMAL TOLERANCES: .XX ±.015 .XXX ±.005 ANG TOL: ± 1° SURFACE ROUGHNESS: REMOVE ALL SHARP EDGES. LEAVE .005 X 45° MIN CHAMFER, OR .005 MIN RADIUS.	ORIGINAL DESIGN BY: <b>High Precision Devices</b> 1448 Valtrec Lane, Suite C, Boulder, Colorado 80301 Phone: (303) 447-2558 Fax: (303) 447-2548 Web Site: www.hpd-online.com	MODIFIED BY:								
ENGINEERING (HPD): D. Senders		8/8/2007			THIS PRINT & THE EMBEDDED CAD MODEL ARE THE DOCUMENTATION OF RECORD, UNLESS OTHERWISE SPECIFIED. ALL DIMENSIONS IN THE MODEL ARE BASIC, WITH TOLERANCES GIVEN BY:	LIGO							
QUALITY (HPD): C. Danaher		8/8/2007	<table border="1"> <tr> <td>SIZE</td> <td>SCALE: 1:1</td> <td>DRAWN BY: Dave Senders (HPD)</td> <td>REV</td> </tr> <tr> <td>C</td> <td>SHEET 1 OF 1</td> <td>DATE PRINTED: 4/17/2009</td> <td>V2</td> </tr> </table>	SIZE	SCALE: 1:1	DRAWN BY: Dave Senders (HPD)	REV	C	SHEET 1 OF 1	DATE PRINTED: 4/17/2009	V2	DESCRIPTION: <b>Actuator Setup Bar</b>	
SIZE	SCALE: 1:1	DRAWN BY: Dave Senders (HPD)		REV									
C	SHEET 1 OF 1	DATE PRINTED: 4/17/2009	V2										
MATERIAL: 6061-T6 Al			P/N: D071129		CONFIG: -								
FINISH: None			CAD FILE NAME: D071129_Actuator_Setup_Bar										
MASS: 1.2 lbs			PROJECT: HAM ISI, Advanced LIGO										