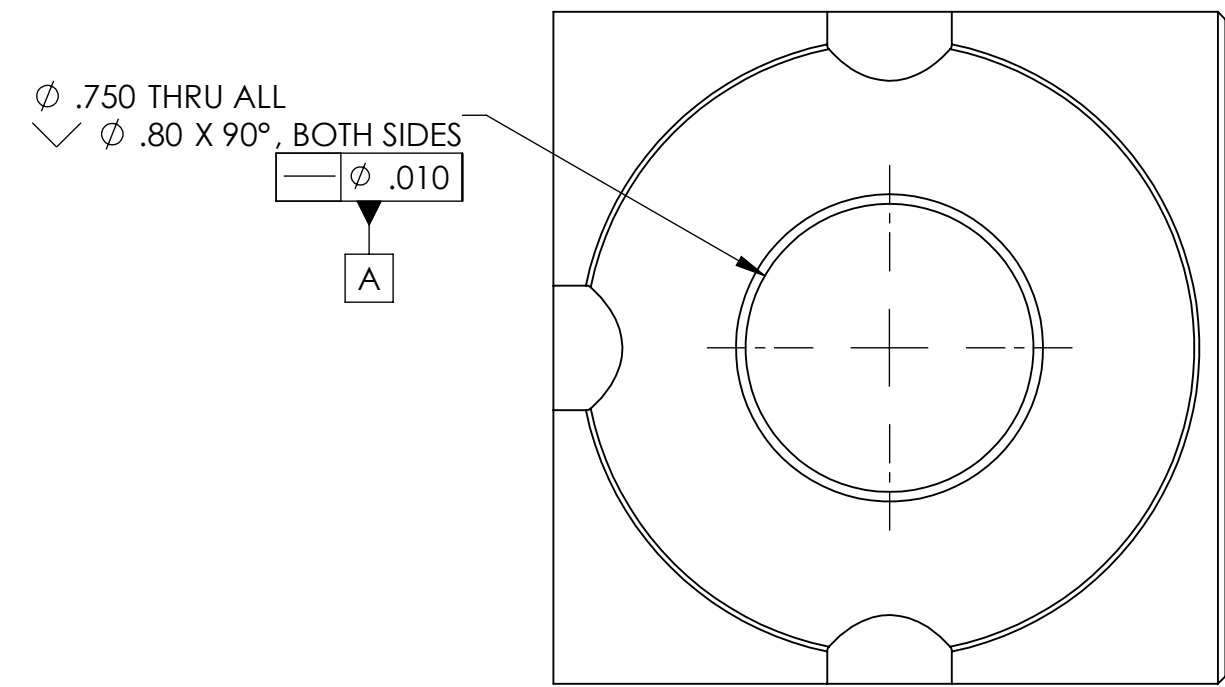
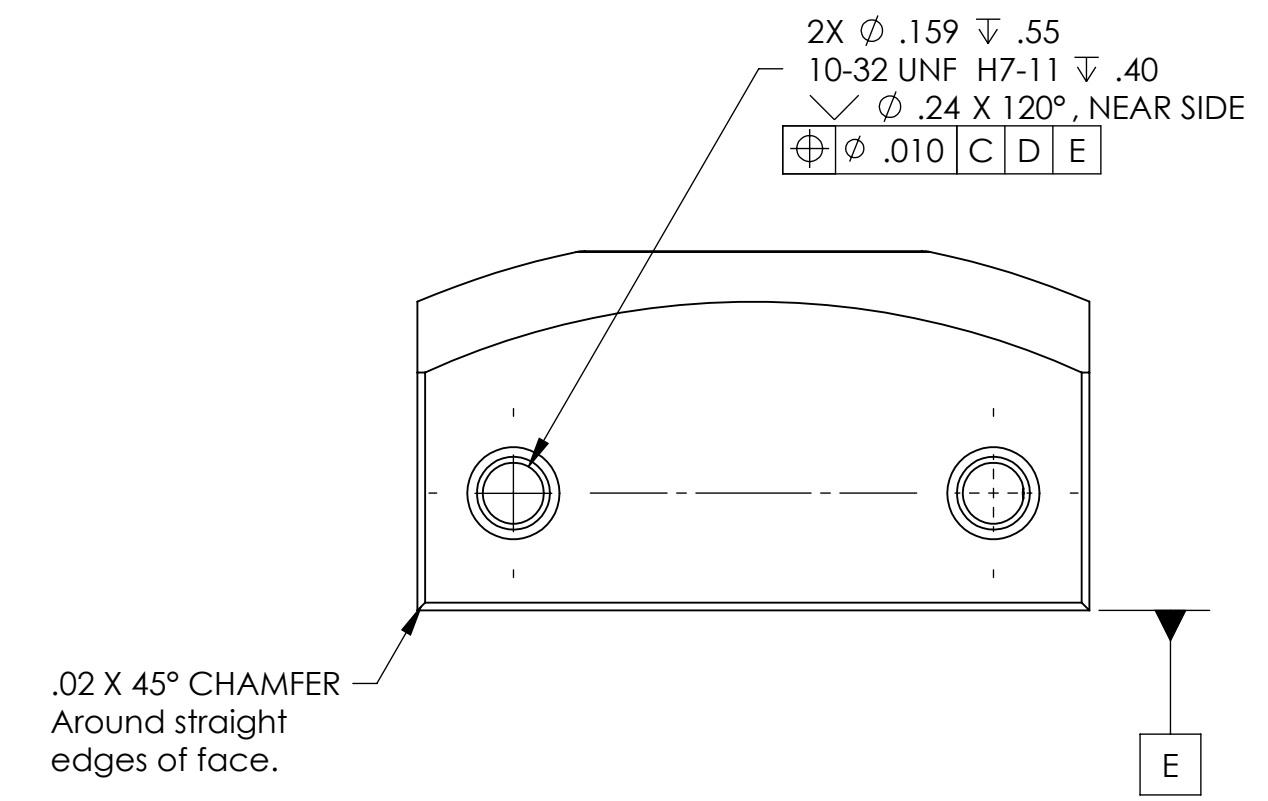
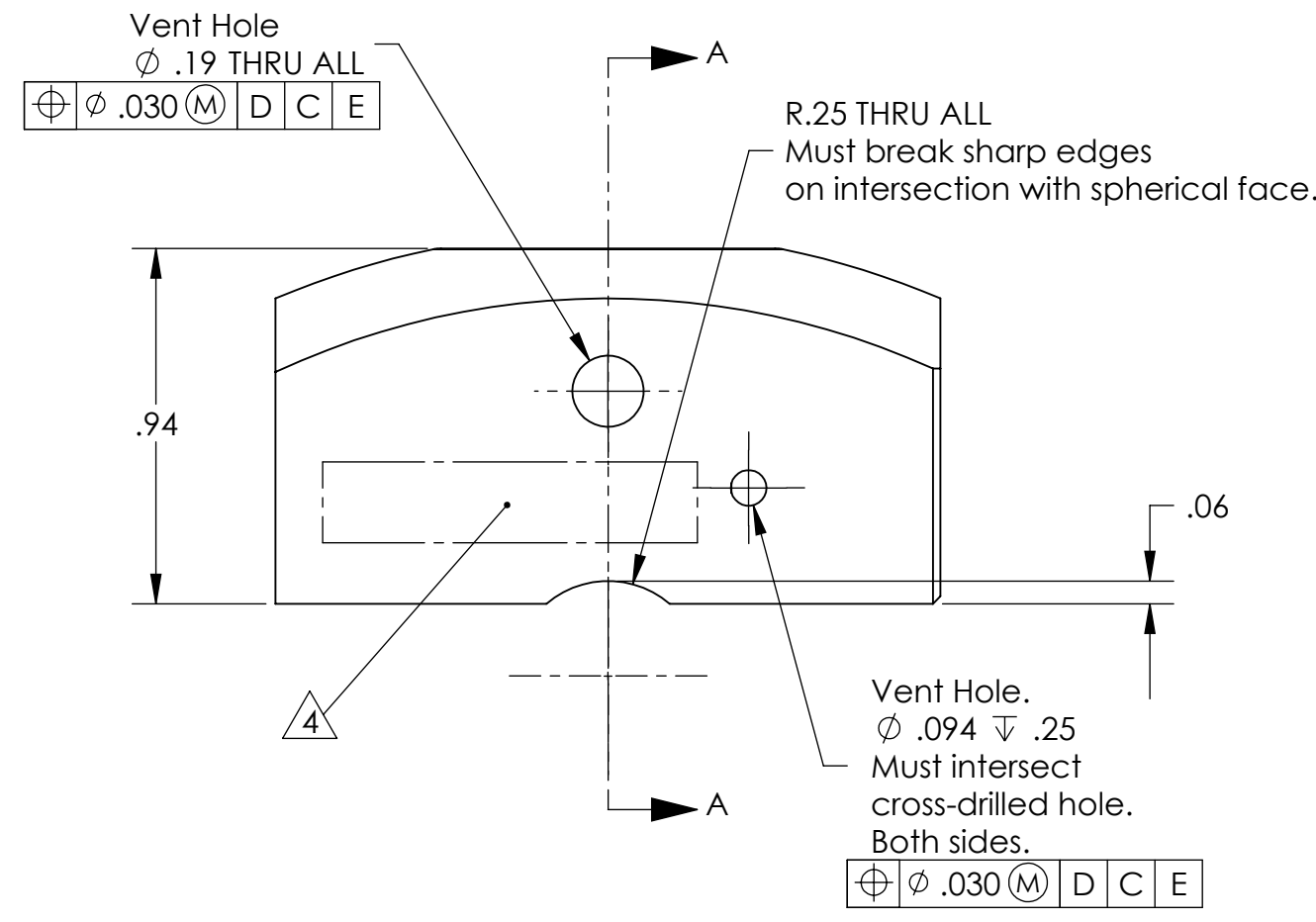
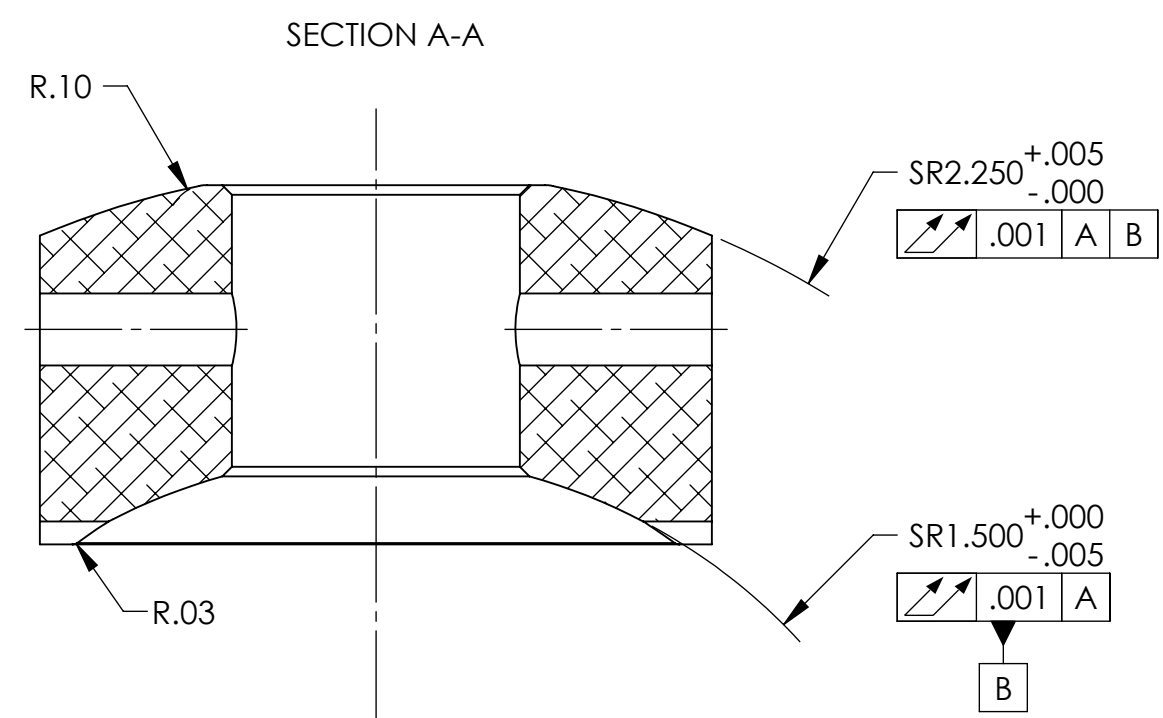
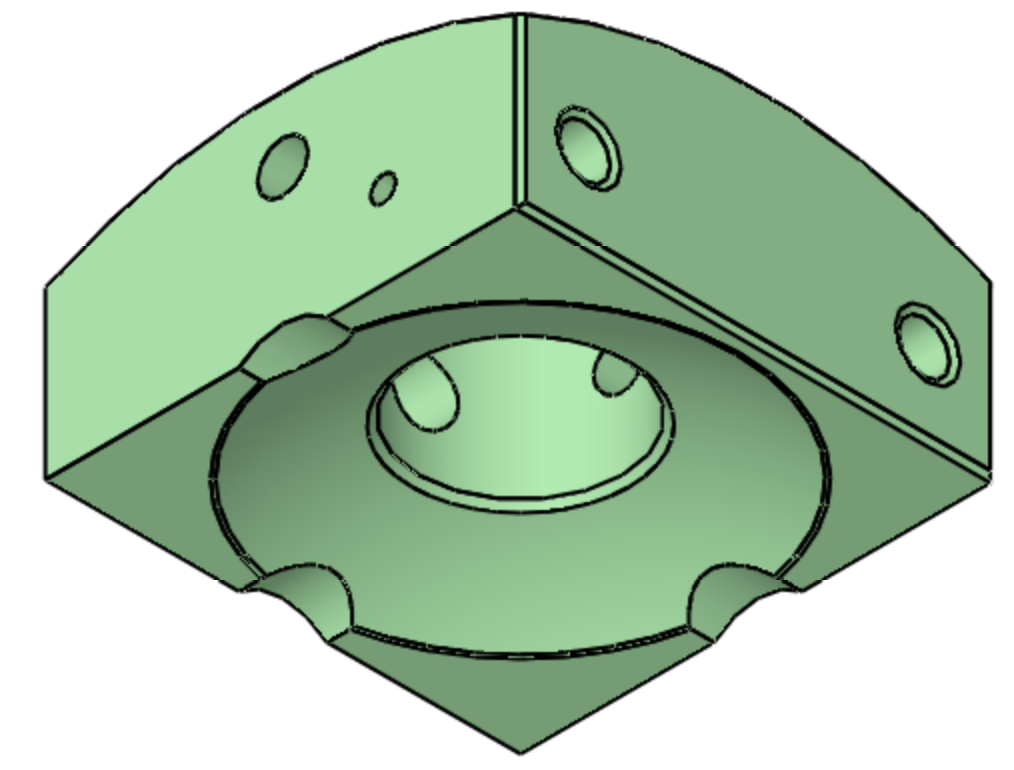
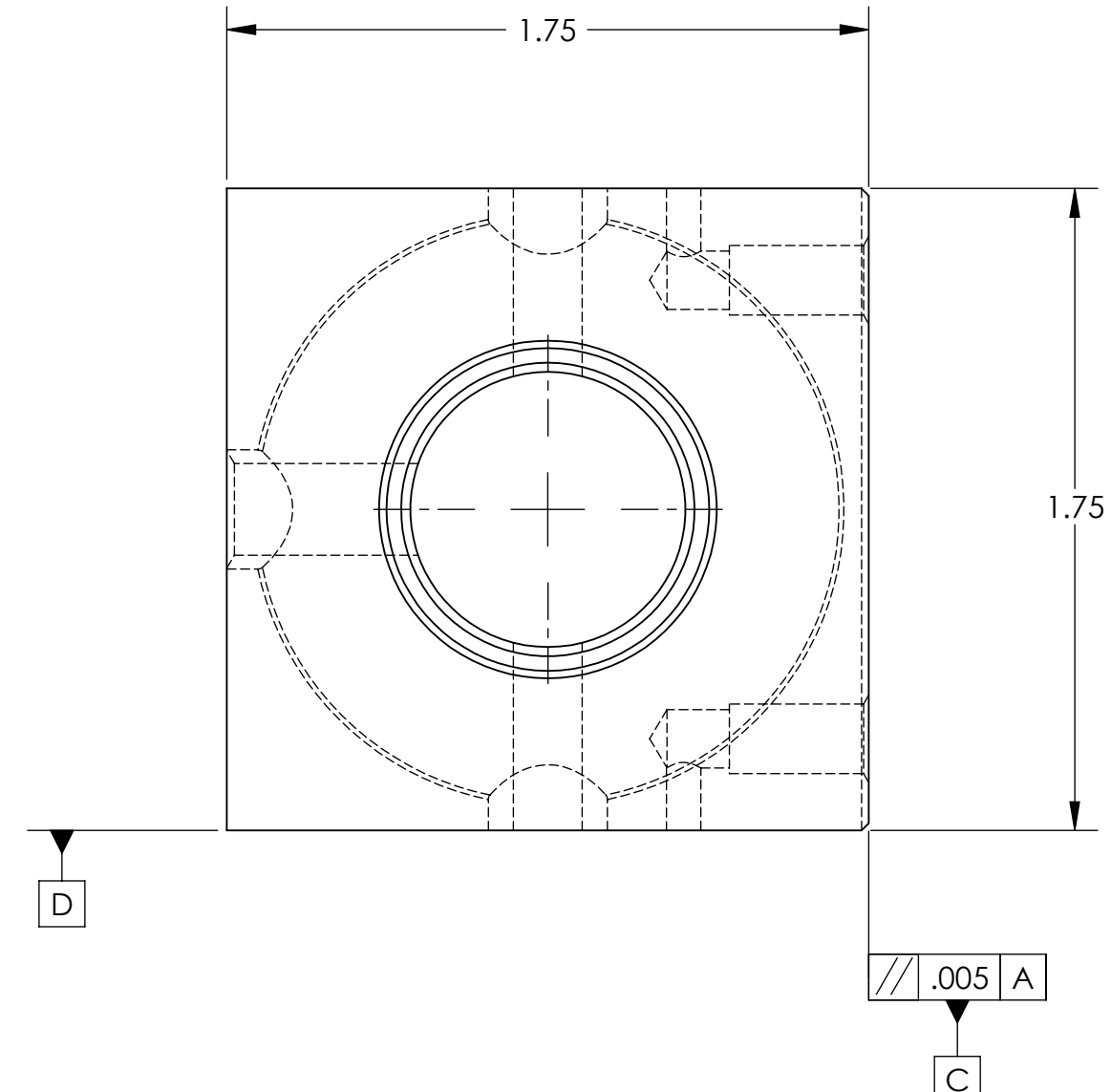
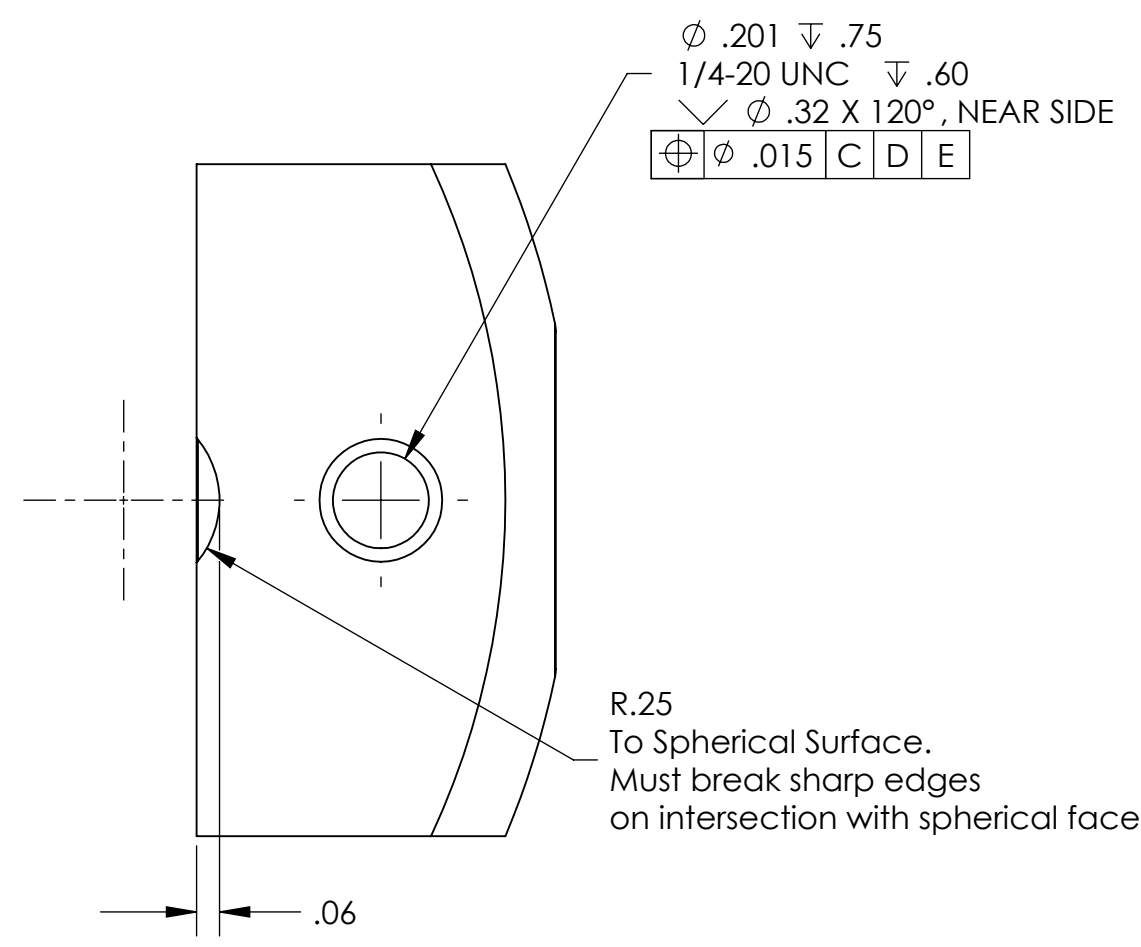


REVISION HISTORY				
REV	DATE	ECO	APPROVAL	DESCRIPTION
V1 / C	25 Jun 2007	1066	D. Senders	Release for Enhanced LIGO.
V2	3 Apr 2009		A. Stein	Release for Advanced LIGO. Minor changes to SR tolerances. Added channels for lubrication. Added 1/4"-20 hole. Added chamfers.



MACHINING NOTES:

- 1) MACHINE ALL SURFACES TO REMOVE OXIDES AND MILL FINISH. ABRASIVE REMOVAL TECHNIQUES (OTHER THAN DRESSED BLANCHARD GRINDING) ARE NOT ACCEPTABLE.
- 2) ALL MACHINING FLUIDS MUST BE WATER SOLUBLE AND FREE OF SULFUR, CHLORINE, AND SILICONE, SUCH AS CINCINNATI MILACRON CIMTECH 410.
- 3) THOROUGHLY CLEAN PART TO REMOVE ALL OIL, GREASE, DIRT, AND CHIPS.
- 4) WHERE INDICATED, MECHANICALLY SCRIBE, STAMP, OR ENGRAVE THE FOLLOWING INFORMATION AS SHOWN BELOW: PART NUMBER-REVISION (AND TYPE IF INDICATED), FOLLOWED ON THE NEXT LINE WITH A UNIQUE 3-DIGIT SERIAL NUMBER STARTING AT 001 FOR THE FIRST PART AND INCREMENTING THEREAFTER. USE 0.38" TALL CHARACTERS UNLESS PART SIZE DICTATES SMALLER.

D071163-V2  
S/N - ###

POST-MACHINING NOTES:

- P1) CLEAN TO LIGO STANDARDS, CLASS A.

APPROVALS ENGINEERING (HPD): <b>D. Senders</b> 5/22/2007 QUALITY (HPD): <b>C. Danaher</b> 5/22/2007 MATERIAL: 6061-T6 Al FINISH: None MASS: 0.2 lbs		DATE 5/22/2007 5/22/2007		UNLESS OTHERWISE SPECIFIED: DIMENSIONS ARE IN INCHES DECIMAL TOLERANCES: .XX ±.015 .XXX ±.005 ANG TOL: ± 1° SURFACE ROUGHNESS: REMOVE ALL SHARP EDGES. LEAVE .005 X 45° MIN CHAMFER, OR .005 MIN RADIUS.		ORIGINAL DESIGN BY: <b>High Precision Devices</b> 1448 Valtec Lane, Suite C, Boulder, Colorado 80301 Phone: (303) 447-2558 Fax: (303) 447-2548 Web Site: www.hpd-online.com		MODIFIED BY: 	
DESCRIPTION: <b>Sensor Head Mount</b>				P/N: <b>D071163</b> CONFIG: -		CAD FILE NAME: D071163_Sensor_Head_Mount			
PROJECT: HAM ISI, Advanced LIGO				SIZE SCALE: 2:1 DRAWN BY: <b>Dave Senders (HPD)</b>		REV: <b>V2</b>		SHEET 1 OF 1 DATE PRINTED: 4/6/2009	