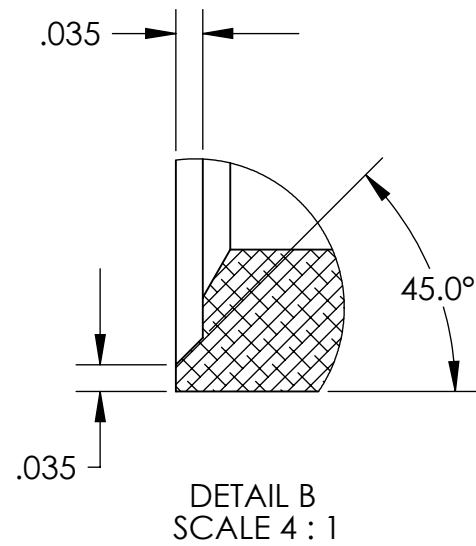
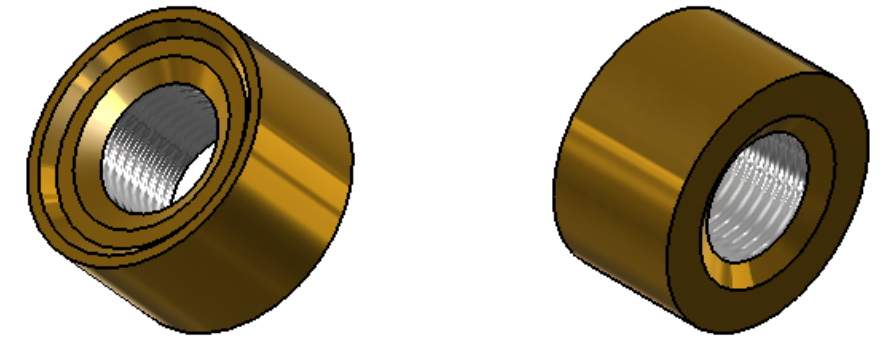
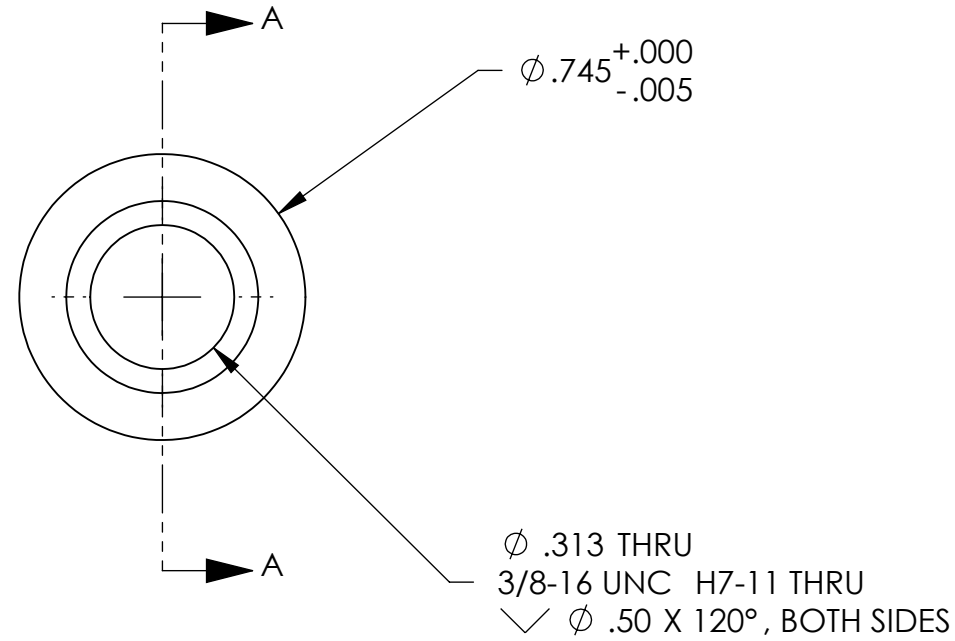
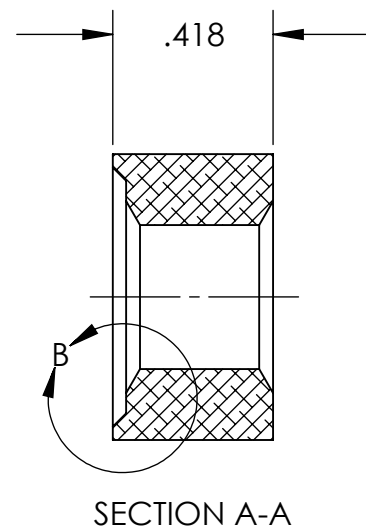


REVISION HISTORY				
REV	DATE	ECO	APPROVAL	DESCRIPTION
V1 / D	19 Sep 2007	1072	B. Schiffner	Release for Enhanced LIGO.
V2	14 Apr 2009		A. Stein	Release for Advanced LIGO. Changes to Notes, only.



MANUFACTURING NOTES:

- 1) MACHINE ALL SURFACES TO REMOVE OXIDES AND MILL FINISH. ABRASIVE REMOVAL TECHNIQUES (OTHER THAN DRESSED BLANCHARD GRINDING) ARE NOT ACCEPTABLE.
- 2) ALL MACHINING FLUIDS MUST BE WATER SOLUBLE AND FREE OF SULFUR, CHLORINE, AND SILICONE, SUCH AS CINCINNATI MILACRON CIMTECH 410.
- 3) THOROUGHLY CLEAN PART TO REMOVE ALL OIL, GREASE, DIRT, AND CHIPS.

POST-MANUFACTURING NOTES:

- P1) REFER TO LIGO DWG# D071471.

UNLESS OTHERWISE SPECIFIED:

DIMENSIONS ARE IN INCHES
DECIMAL TOLERANCES:
.XX ±.015 .XXX ±.005
ANG TOL: ± 1° SURFACE ROUGHNESS: 63

REMOVE ALL SHARP EDGES.
LEAVE .005 X 45° MIN CHAMFER,
OR .005 MIN RADIUS.

THIS PRINT & THE EMBEDDED CAD
MODEL ARE THE DOCUMENTATION OF
RECORD.

APPROVALS	DATE
ENGINEERING (HPD): D. Bryce	5/24/2007
QUALITY (HPD): C. Danaher	5/24/2007
MATERIAL:	304 SS
FINISH:	None
MASS:	0.04 lbs

ORIGINAL DESIGN BY:		High Precision Devices		MODIFIED BY:
		1668 Valtec Lane, Suite C, Boulder, Colorado 80301		
		Phone: (303) 447-2558 Fax: (303) 447-2548 Web Site: www.hpd-online.com		
DESCRIPTION: Weld Nut, Custom				
P/N: D071182		CONFIG: -		
CAD FILE NAME: D071182_Weld_Nut-Custom				
PROJECT: HAM ISI, Advanced LIGO				
SIZE B	SCALE: 2:1	DRAWN BY: Dan Bryce (HPD)	REV	
SHEET 1 OF 1	DATE PRINTED: 4/14/2009		V2	