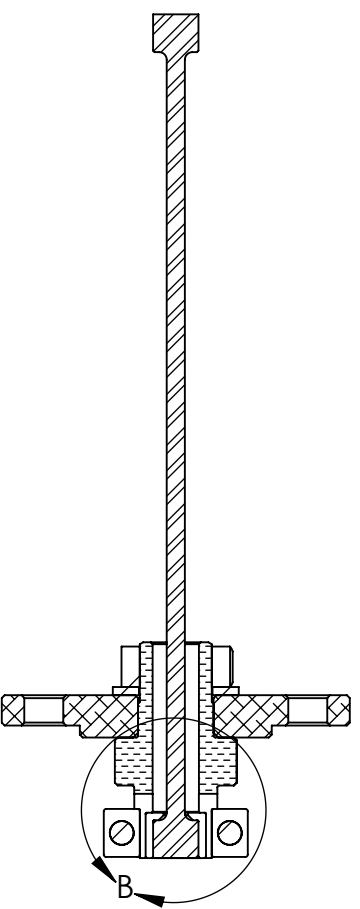


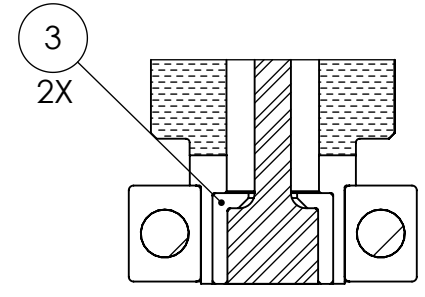
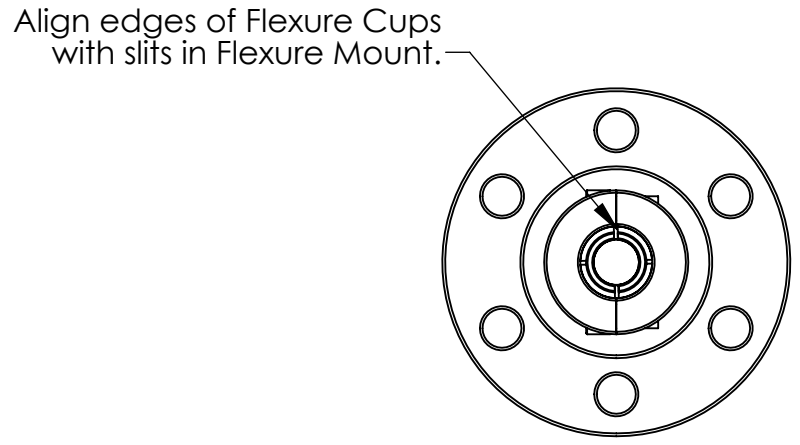
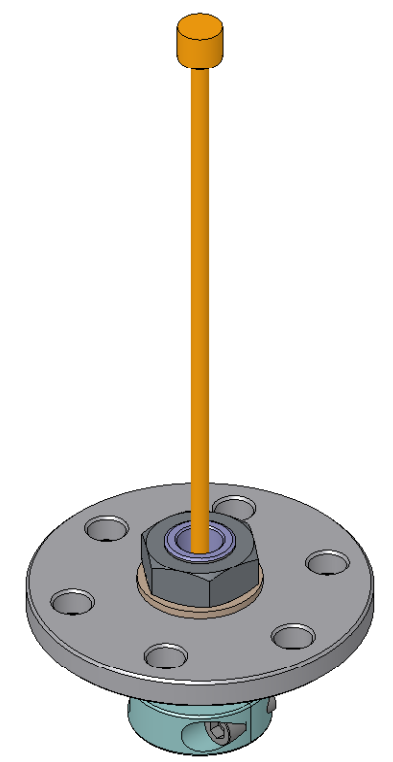
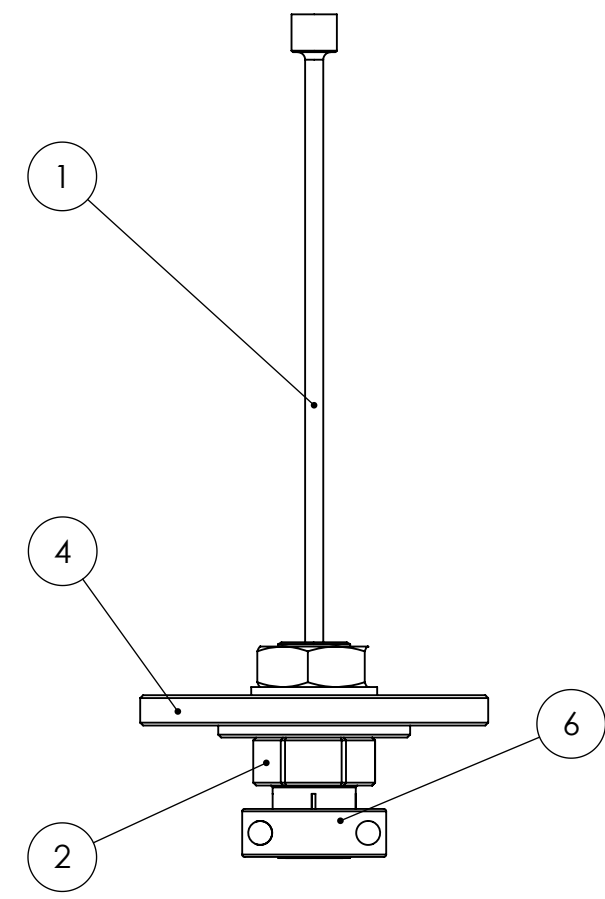
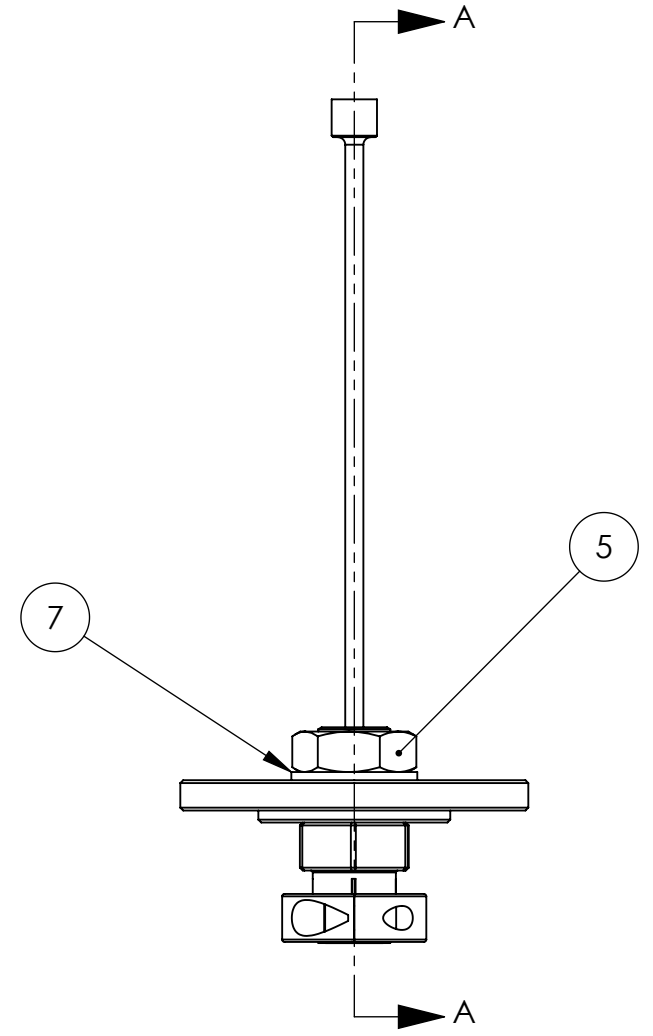
NOTES CONTINUED:
 5. Refer to LIGO-E0900216 for detailed assembly instructions.
 6. Flexure is fragile: handle with care.
 7. Weight of finished assembly: 1.0 lbs

REV.	DATE	DCN #	DRAWING TREE #
v1 / C	09 JAN 2008	N/A	N/A
v2	12 JAN 2010	E1000001	T0900305
-	-	-	-

D
C
B
A



SECTION A-A



DETAIL B
SCALE 1 : 1

ITEM NO.	PART NUMBER	DESCRIPTION	SIZE / TYPE	MATERIAL	Default /QTY.
7	MCMASTER_98017A220	Flat Washer, 3/4"	3/4" (.77"x1.31")	18-8 SS	1
6	D0900207	Shaft Collar, 3/4" Bore, 2-Piece, Custom Ag-Plated Screws	3/4"IDx1.5"OD, Ag-Plated Screws	316 SS / 18-8 SS	1
5	D0900206	Hex Nut, Custom Ag-Plated, 3/4"-10	3/4"-10, Ag-Plated	18-8 SS	1
4	D071105	Flexure Lower Plate	-	6061-T6 Al	1
3	D071104	Flexure Cup	-	MARAGING 300	2
2	D071103	Flexure Mount	-	17-4 PH H1150	1
1	D071102	Flexure	-	MARAGING 300	1

PARTS LIST

NOTES AND TOLERANCES: (UNLESS OTHERWISE SPECIFIED)
 1. INTERPRET DRAWING PER ASME Y14.5-1994.
 2. REMOVE ALL SHARP EDGES, R.02 MIN.
 3. DO NOT SCALE FROM DRAWING.
 4. ALL MACHINING FLUIDS MUST BE FULLY SYNTHETIC, FULLY WATER SOLUBLE AND FREE OF SULFUR, SILICONE, AND CHLORINE.

DIMENSIONS ARE IN INCHES
 TOLERANCES:
 .XX ± .015
 .XXX ± .005
 ANGULAR ± 0.5°

MATERIAL See BOM
 FINISH See BOM

LIGO CALIFORNIA INSTITUTE OF TECHNOLOGY
 MASSACHUSETTS INSTITUTE OF TECHNOLOGY

SYSTEM: ADVANCED LIGO SUB-SYSTEM: SEI
 NEXT ASSY: D071430

PART NAME: Asm, Flexure
 DESIGNER: Andy Stein 17 FEB 2009
 DRAFTER: Andy Stein 12 JAN 2010
 CHECKER: Ken Mason 12 JAN 2010
 APPROVAL: Ken Mason 12 JAN 2010

SIZE DWG. NO.: B D071431
 REV.: v2

SCALE: 1:2 PROJECTION: SHEET 1 OF 1

D071431_Asm-Flexure, PART PDM REV: V1-011, DRAWING PDM REV: X-001