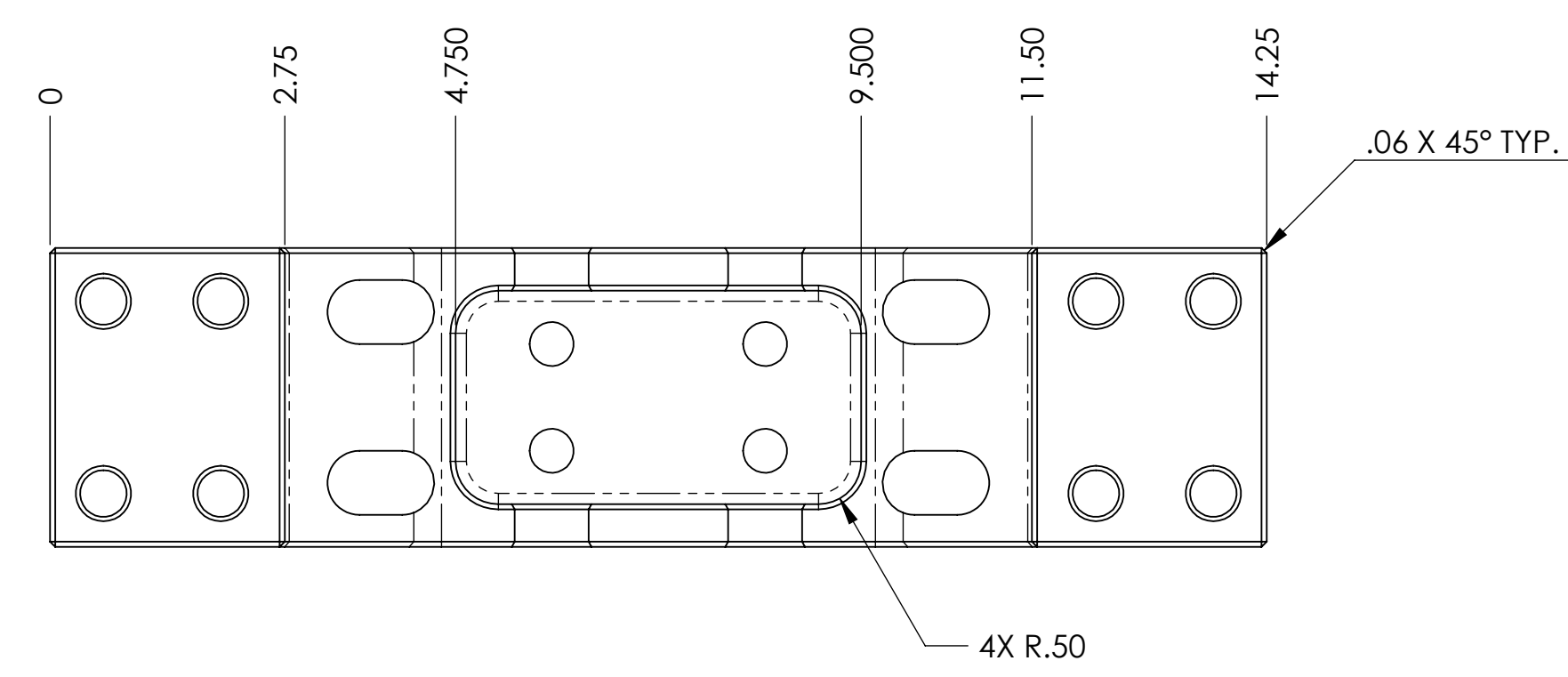
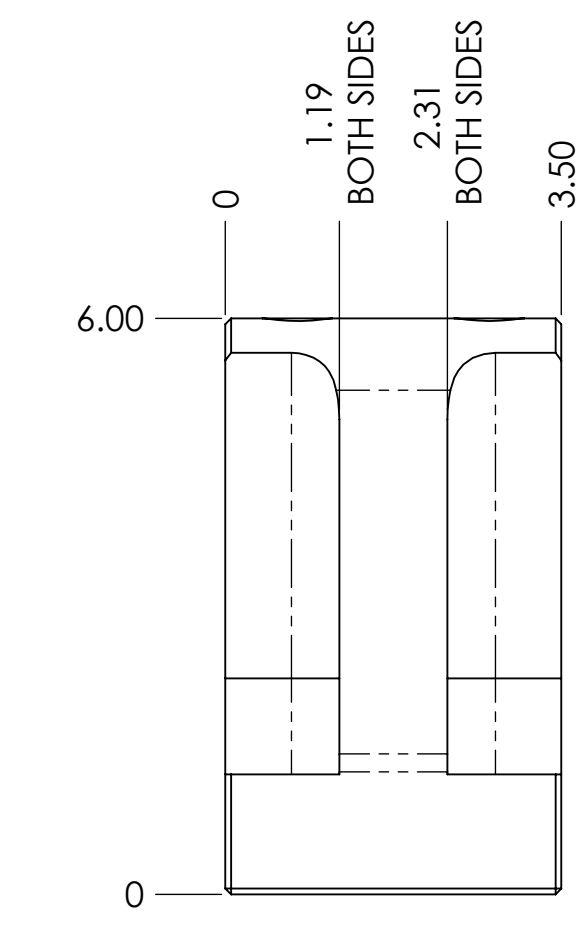
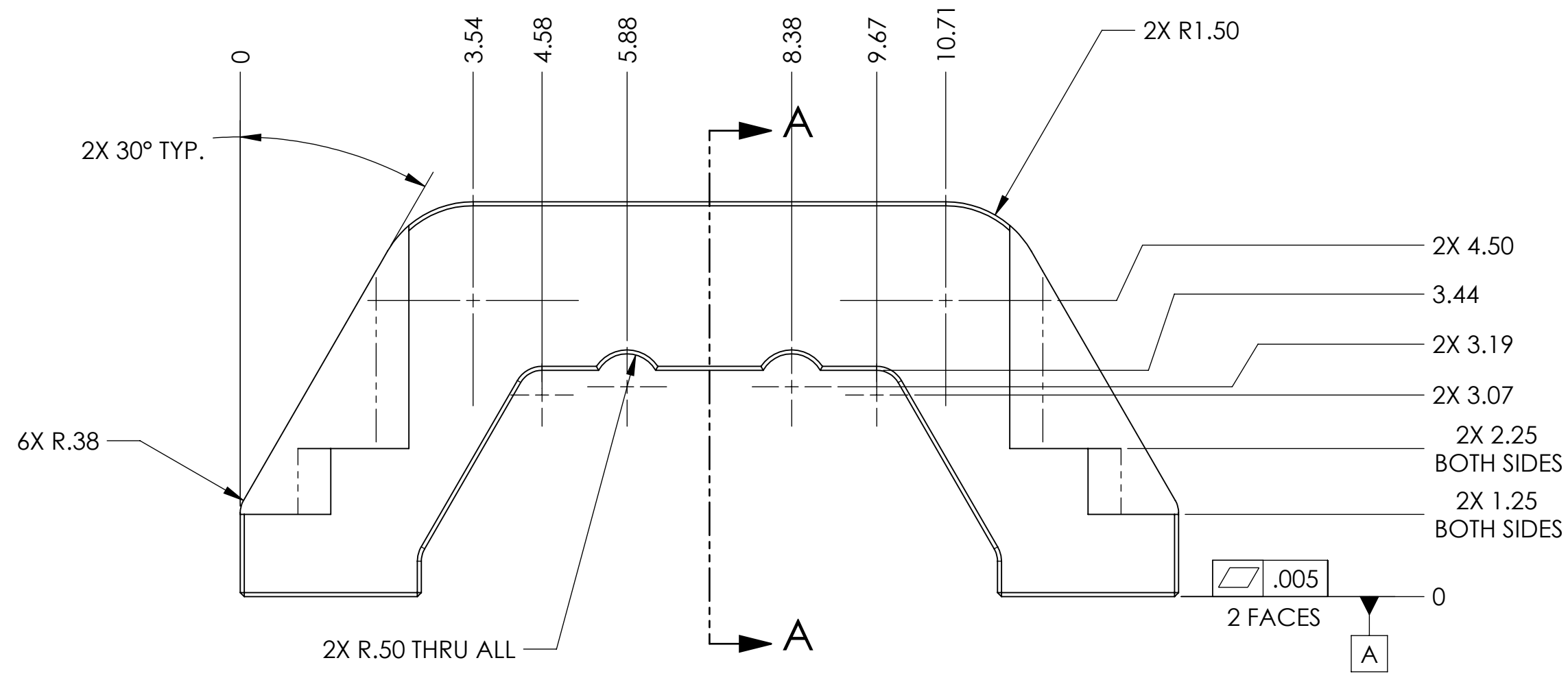
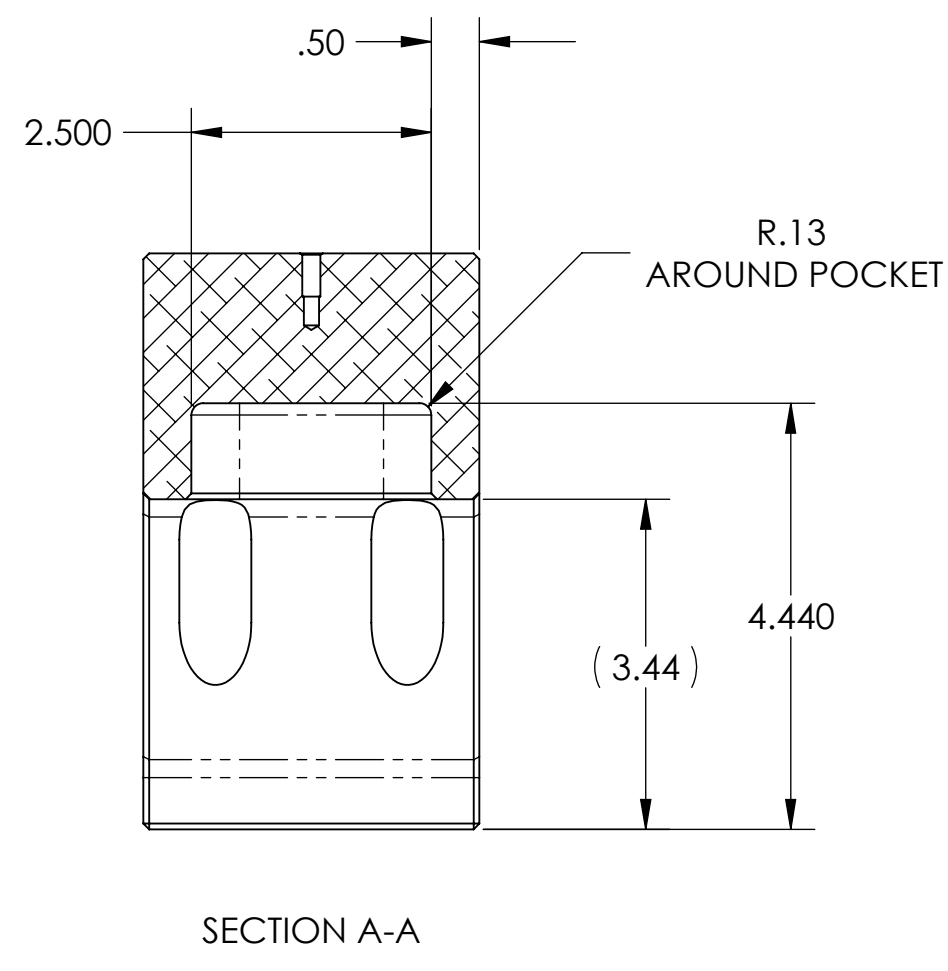
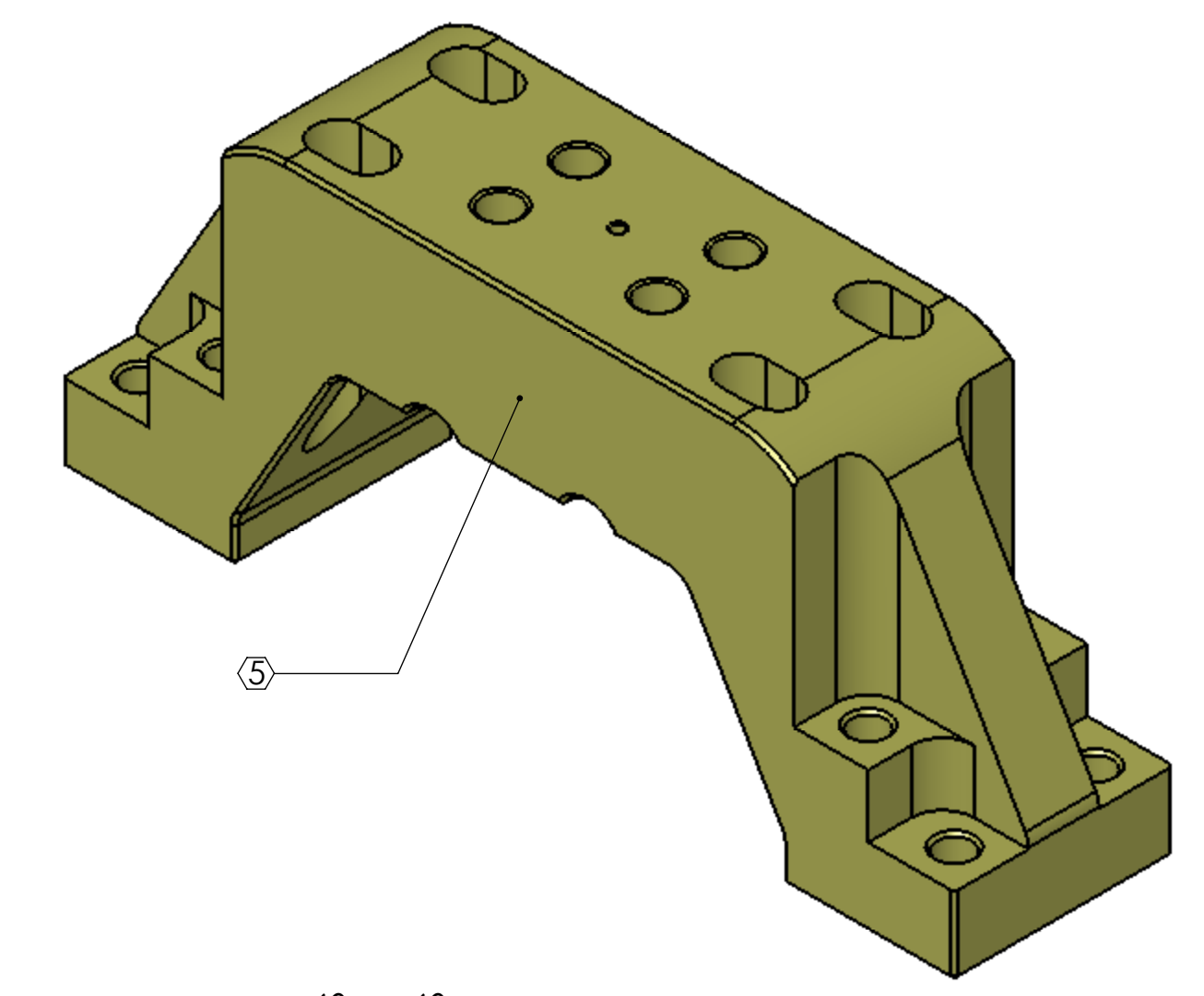
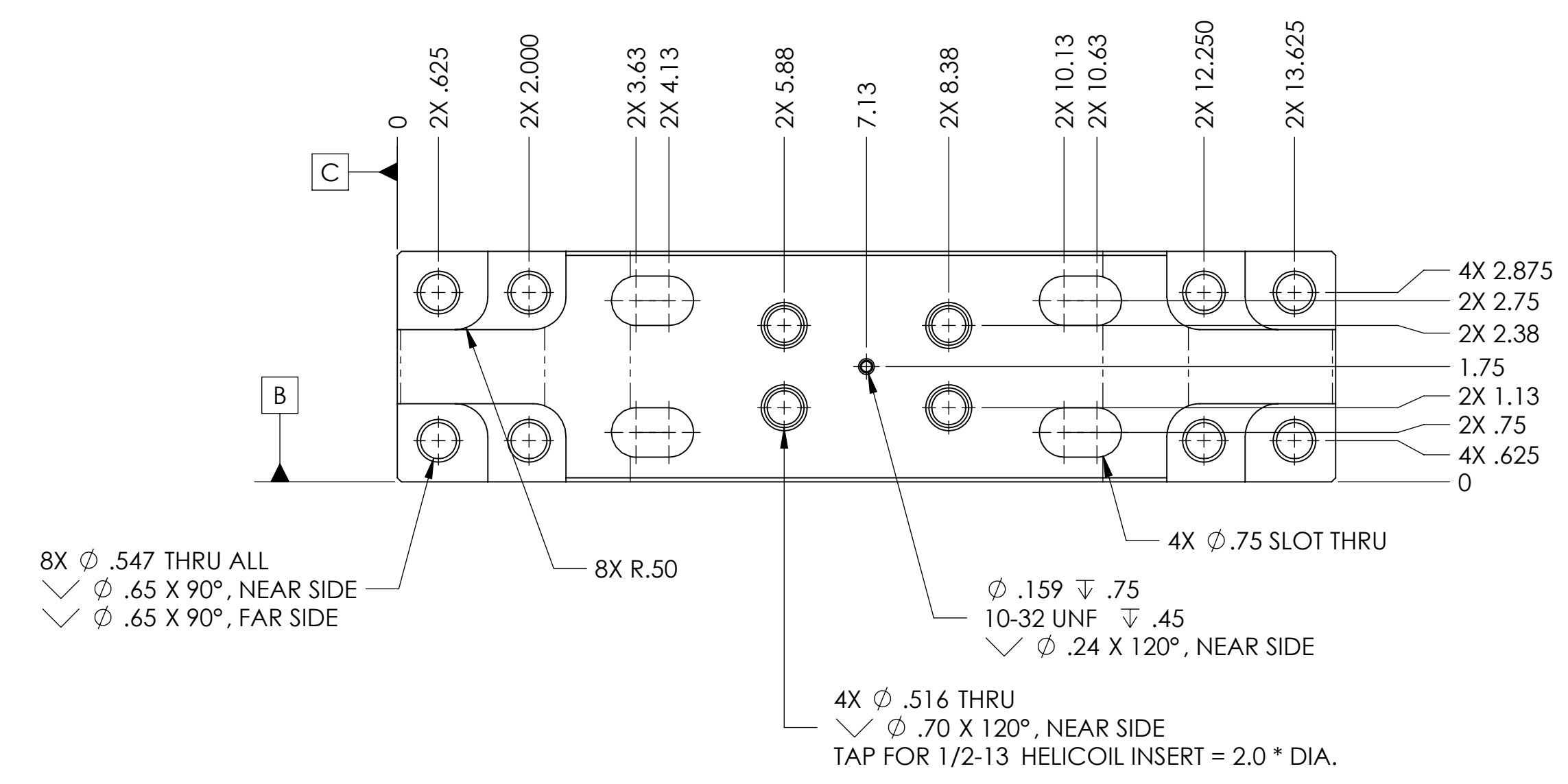


NOTES CONTINUED:  
 ⑤ SCRIBE, ENGRAVE, OR MECHANICALLY STAMP (NO INKS OR DYES) DRAWING PART NUMBER AND REVISION ON NOTED SURFACE FOLLOWED ON THE NEXT LINE BY A THREE DIGIT SERIAL NUMBER. SERIAL NUMBERS START AT 001 FOR THE FIRST ARTICLE AND PROCEED CONSECUTIVELY. USE 07" HIGH CHARACTERS. EXAMPLE: DXXXXXX-VY, S/N 001. A VIBRATORY TOOL MAY BE USED.  
 PART WEIGHS 11.3 LBS.

REV.	DATE	DCN #	DRAWING TREE #
v1 / 02	24 SEP 2008	N/A	N/A
v2	03 MAR 2010	E1000057	E1000056



DIMENSIONS ARE IN INCHES		NOTES AND TOLERANCES: (UNLESS OTHERWISE SPECIFIED)		CALIFORNIA INSTITUTE OF TECHNOLOGY MASSACHUSETTS INSTITUTE OF TECHNOLOGY		PART NAME	
TOLERANCES: .XX ± .015 .XXX ± .005		1. INTERPRET DRAWING PER ASME Y14.5-1994. 2. REMOVE ALL SHARP EDGES, R.02 MIN. 3. DO NOT SCALE FROM DRAWING. 4. ALL MACHINING FLUIDS MUST BE FULLY SYNTHETIC, FULLY WATER SOLUBLE AND FREE OF SULFUR, SILICONE, AND CHLORINE.		LIGO		Clamp Cap, HAM Support Tube	
ANGULAR ± 0.5°		MATERIAL 6061-T6 AL		SYSTEM ADVANCED LIGO		DESIGNER A. STEIN 18 JUN 2008	
		FINISH 63 $\mu$ inch		SUB-SYSTEM SEI		DRAFTER A. STEIN 26 FEB 2010	
				NEXT ASSY D080373		CHECKER	
						APPROVAL K. MASON 02 MAR 2010	
						SIZE DWG. NO. D	
						D080375	
						REV. v2	
						SCALE: 1:2 PROJECTION: SHEET 1 OF 1	

D080375\_Clamp\_Cap\_HAM\_Support\_Tube\_PART PDM REV: X-012\_DRAWING PDM REV: X-004