

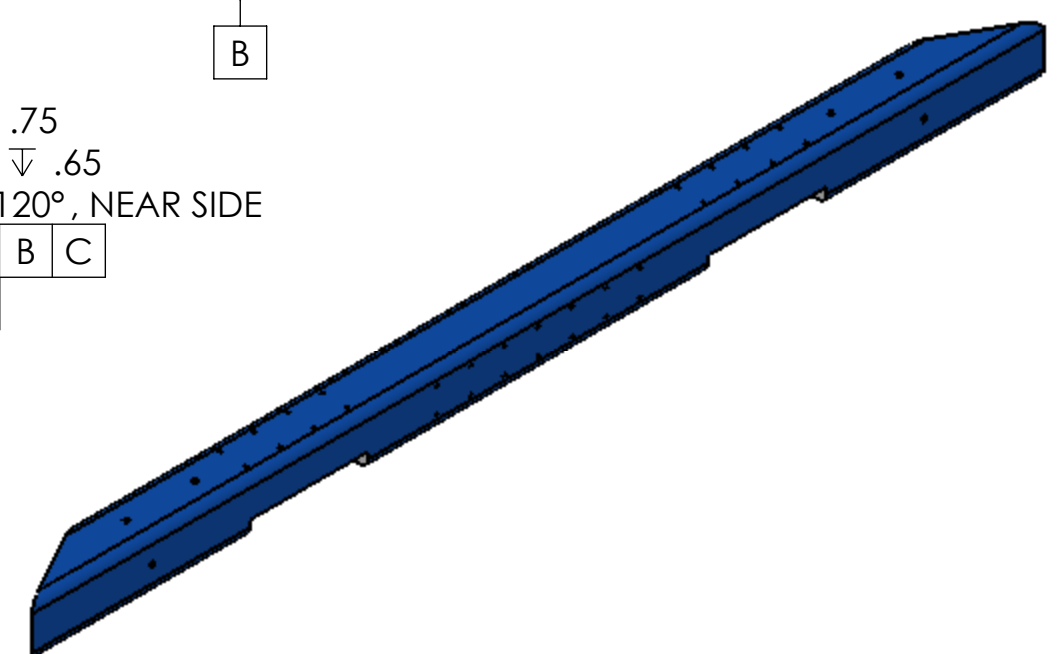
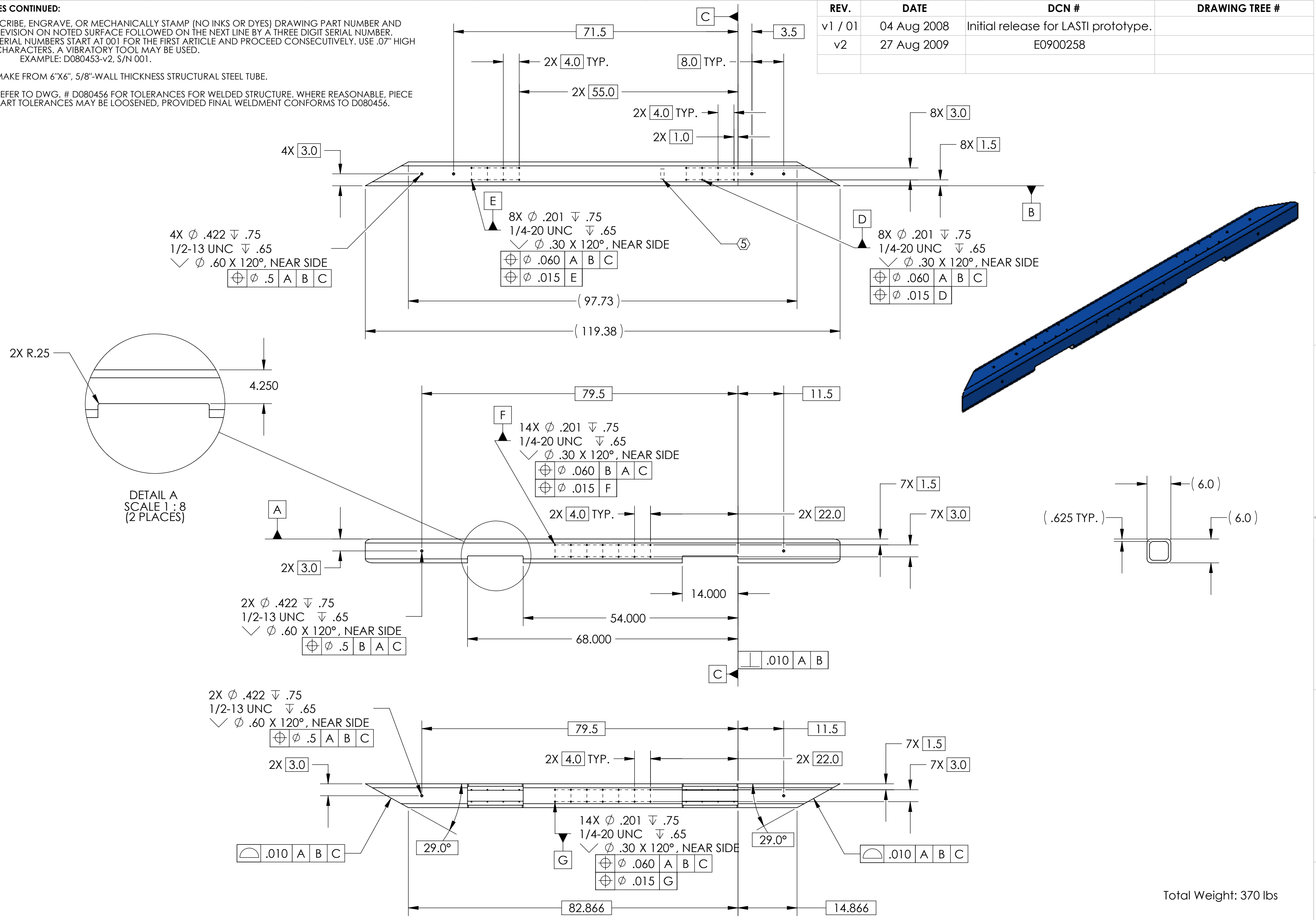
NOTES CONTINUED:

⑤ SCRIBE, ENGRAVE, OR MECHANICALLY STAMP (NO INKS OR DYES) DRAWING PART NUMBER AND REVISION ON NOTED SURFACE FOLLOWED ON THE NEXT LINE BY A THREE DIGIT SERIAL NUMBER. SERIAL NUMBERS START AT 001 FOR THE FIRST ARTICLE AND PROCEED CONSECUTIVELY. USE .07" HIGH CHARACTERS. A VIBRATORY TOOL MAY BE USED.
EXAMPLE: D080453-v2, S/N 001.

6. MAKE FROM 6"x6", 5/8"-WALL THICKNESS STRUCTURAL STEEL TUBE.

7. REFER TO DWG. # D080456 FOR TOLERANCES FOR WELDED STRUCTURE. WHERE REASONABLE, PIECE PART TOLERANCES MAY BE LOOSENED, PROVIDED FINAL WELDMENT CONFORMS TO D080456.

REV.	DATE	DCN #	DRAWING TREE #
v1 / 01	04 Aug 2008	Initial release for LASTI prototype.	
v2	27 Aug 2009	E0900258	



Total Weight: 370 lbs

NOTES AND TOLERANCES: (UNLESS OTHERWISE SPECIFIED)

- INTERPRET DRAWING PER ASME Y14.5-1994.
- REMOVE ALL SHARP EDGES, R.02 MIN.
- DO NOT SCALE FROM DRAWING.
- ALL MACHINING FLUIDS MUST BE FULLY SYNTHETIC, FULLY WATER SOLUBLE AND FREE OF SULFUR, SILICONE, AND CHLORINE.

MATERIAL	A500 Grade B Steel
FINISH	See Notes

LIGO CALIFORNIA INSTITUTE OF TECHNOLOGY MASSACHUSETTS INSTITUTE OF TECHNOLOGY	
SYSTEM	SUB-SYSTEM
ADVANCED LIGO	SEI
NEXT ASSY	D080456

PART NAME				HAM Straight Crossbeam Tube			
DESIGNER	A. Stein	17 Jun 2008	SIZE	DWG. NO.	REV.		
DRAFTER	A. Stein	17 Jun 2008	c	D080453	v2		
CHECKER	-		SCALE:	1:16	PROJECTION:	SHEET 1 OF 1	
APPROVAL	K. Mason	27 Aug 2009					