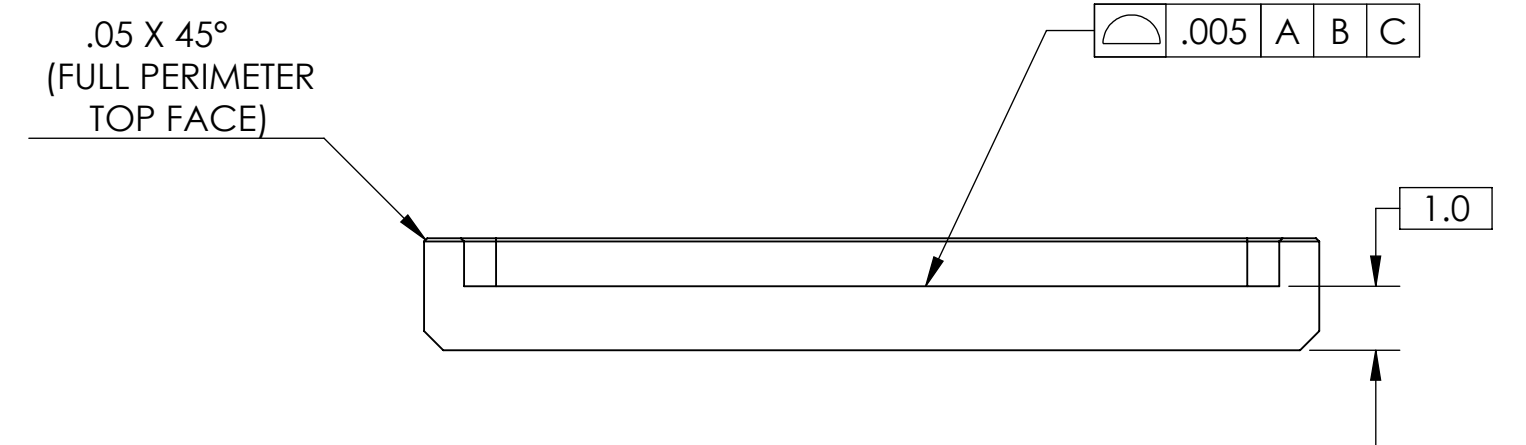
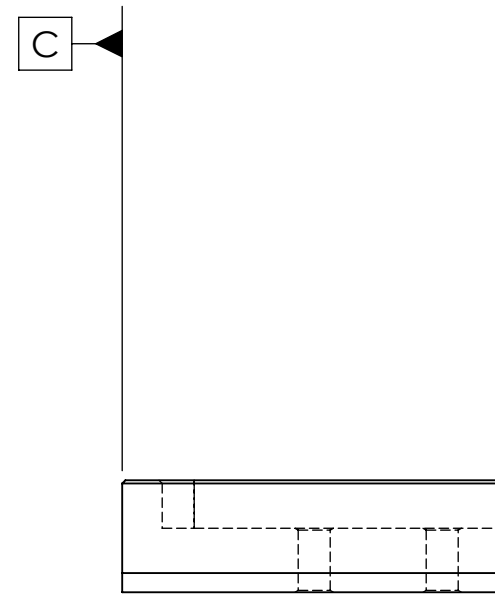
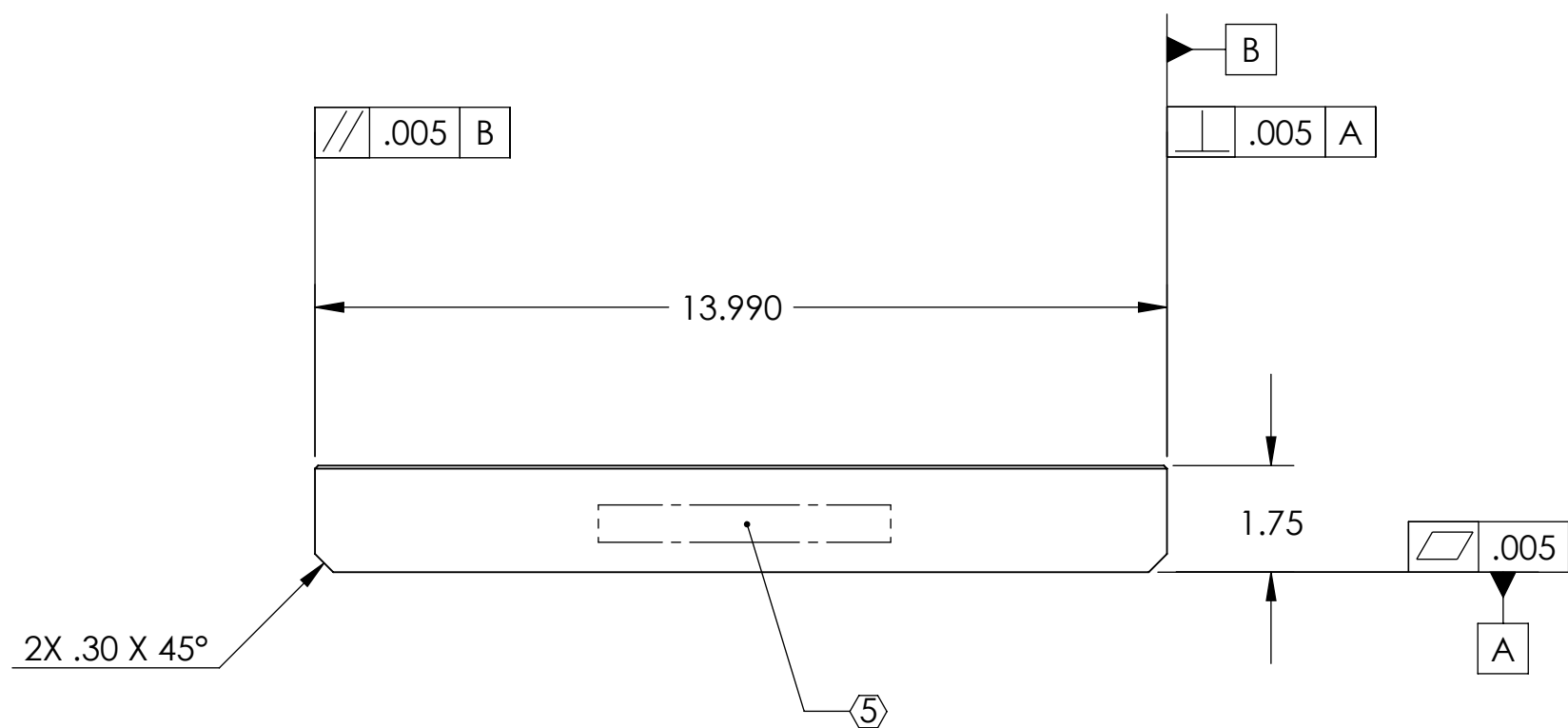
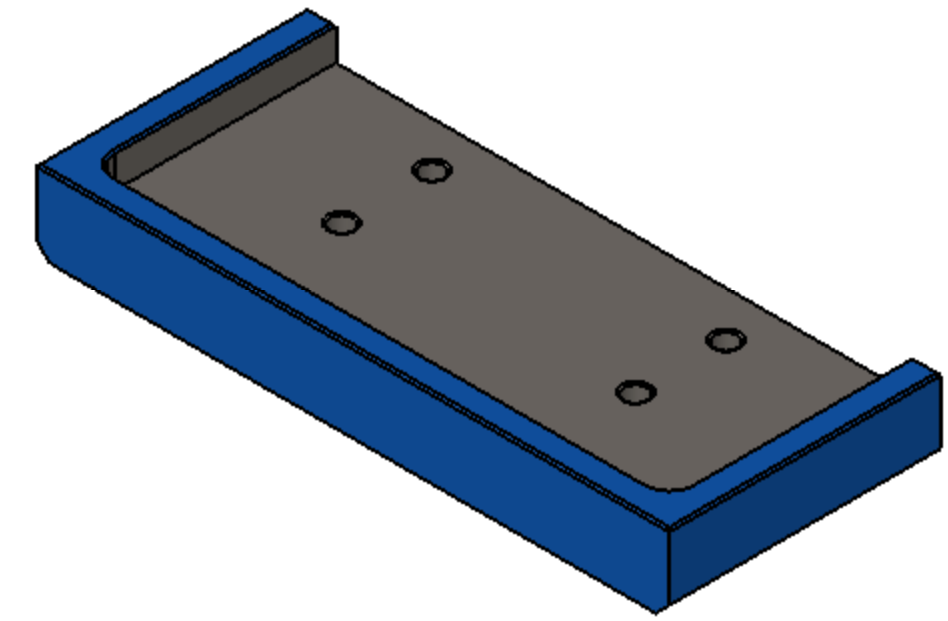
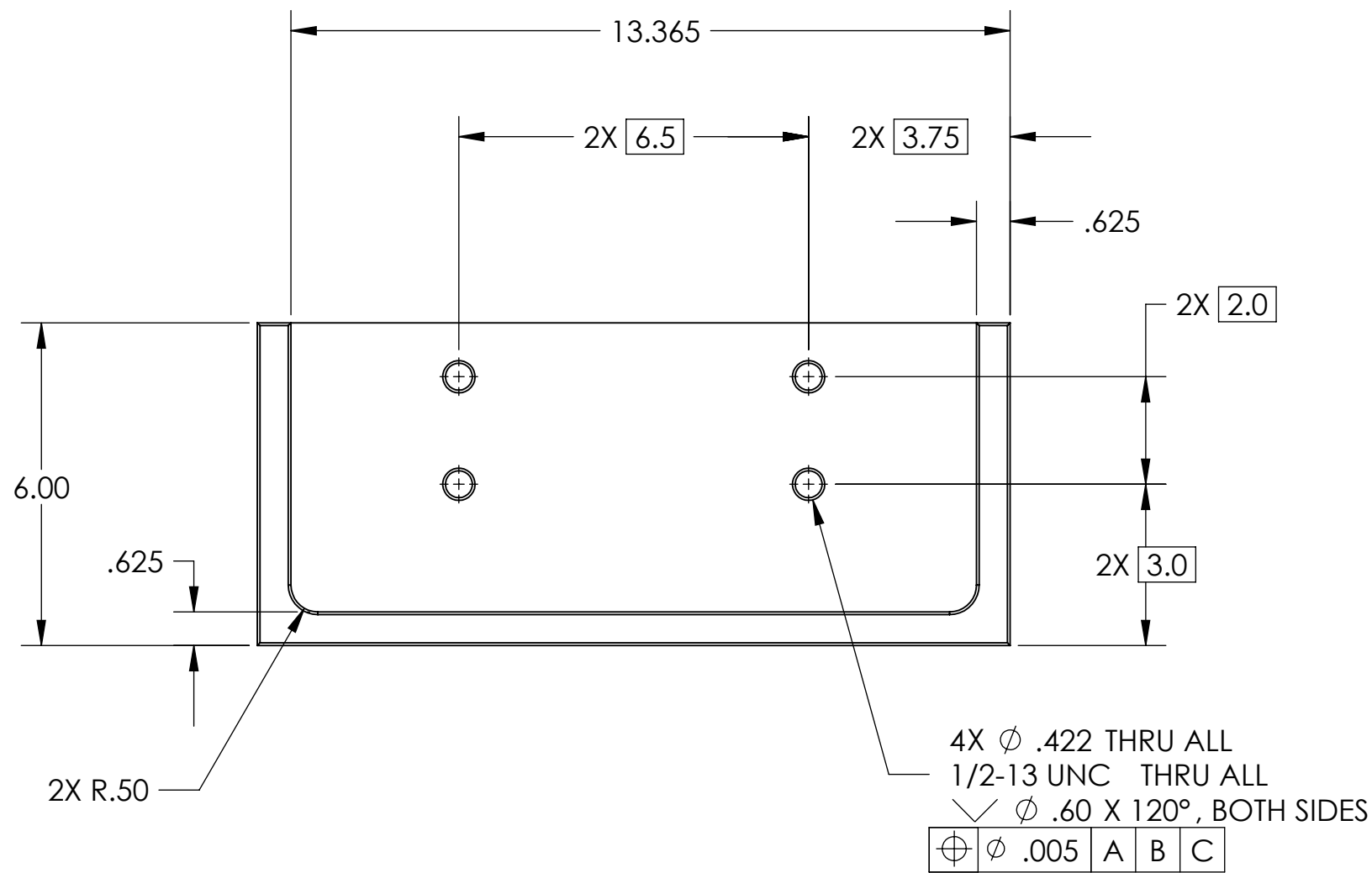


NOTES CONTINUED:

5. SCRIBE, ENGRAVE, OR MECHANICALLY STAMP (NO INKS OR DYES) DRAWING PART NUMBER AND REVISION ON NOTED SURFACE FOLLOWED ON THE NEXT LINE BY A THREE DIGIT SERIAL NUMBER. SERIAL NUMBERS START AT 001 FOR THE FIRST ARTICLE AND PROCEED CONSECUTIVELY. USE .07" HIGH CHARACTERS. A VIBRATORY TOOL MAY BE USED.
EXAMPLE: D080454-v2, S/N 001.

6. REFER TO DWG. # D080456 FOR TOLERANCES FOR WELDED STRUCTURE. WHERE REASONABLE, PIECE PART TOLERANCES MAY BE LOOSENED, PROVIDED FINAL WELDMENT CONFORMS TO D080456.

REV.	DATE	DCN #	DRAWING TREE #
v1 / 01	04 Aug 2008	Initial release for LASTI prototype.	
v2	27 Aug 2009	E0900258	



Total Weight: 26.7 lbs

NOTES AND TOLERANCES: (UNLESS OTHERWISE SPECIFIED)

1. INTERPRET DRAWING PER ASME Y14.5-1994.
2. REMOVE ALL SHARP EDGES, R.02 MIN.
3. DO NOT SCALE FROM DRAWING.
4. ALL MACHINING FLUIDS MUST BE FULLY SYNTHETIC, FULLY WATER SOLUBLE AND FREE OF SULFUR, SILICONE, AND CHLORINE.

MATERIAL: ASTM A36 Steel
FINISH: 63 μinch

LIGO CALIFORNIA INSTITUTE OF TECHNOLOGY
MASSACHUSETTS INSTITUTE OF TECHNOLOGY

SYSTEM: ADVANCED LIGO
SUB-SYSTEM: SEI

NEXT ASSY: D080456

PART NAME			DESIGNER		DATE	SIZE	DWG. NO.	REV.
HAM Crossbeam Clamp Plate			A. Stein	A. Stein	16 Jun 2008	c	D080454	v2
APPROVAL	K. Mason	27 Aug 2009	SCALE: 1:3	PROJECTION:	SHEET 1 OF 1			