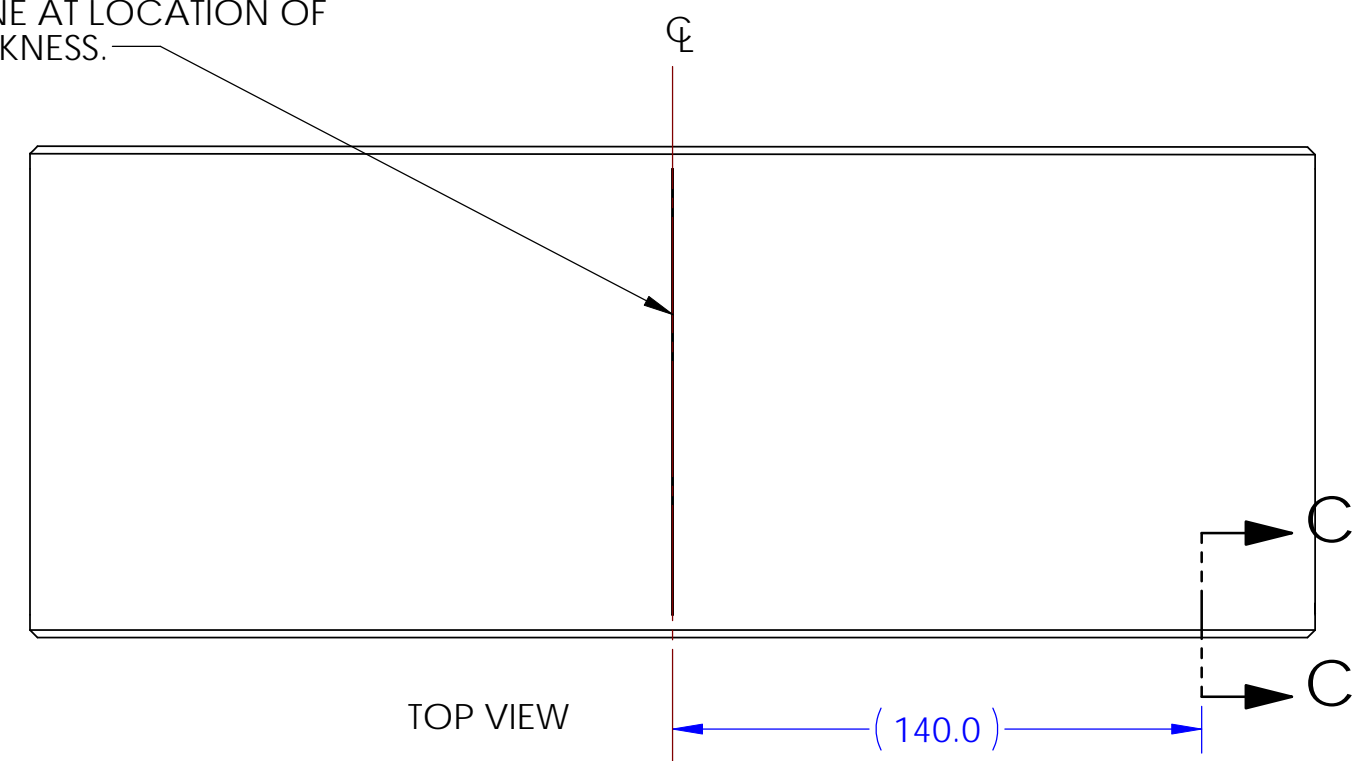


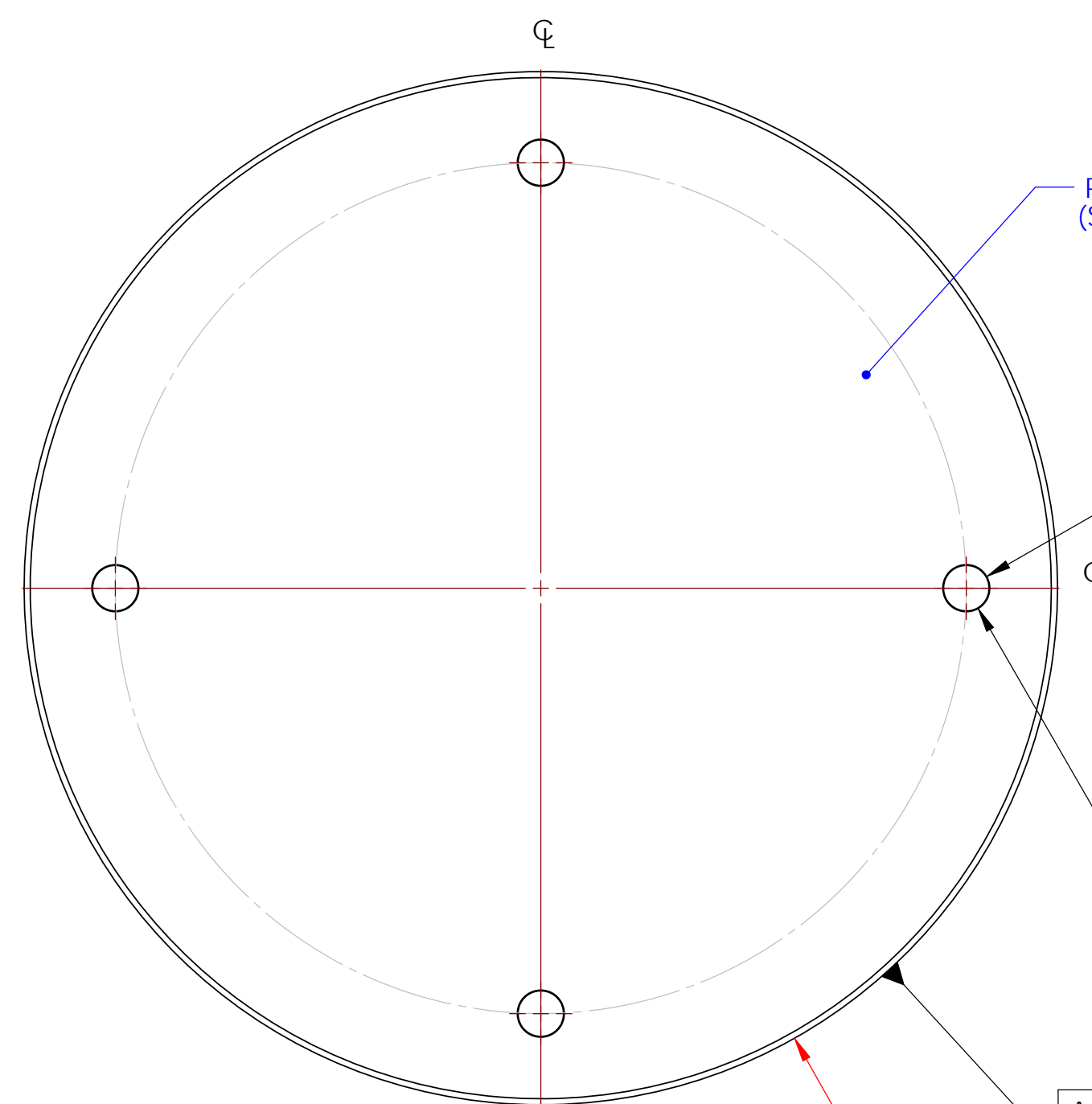
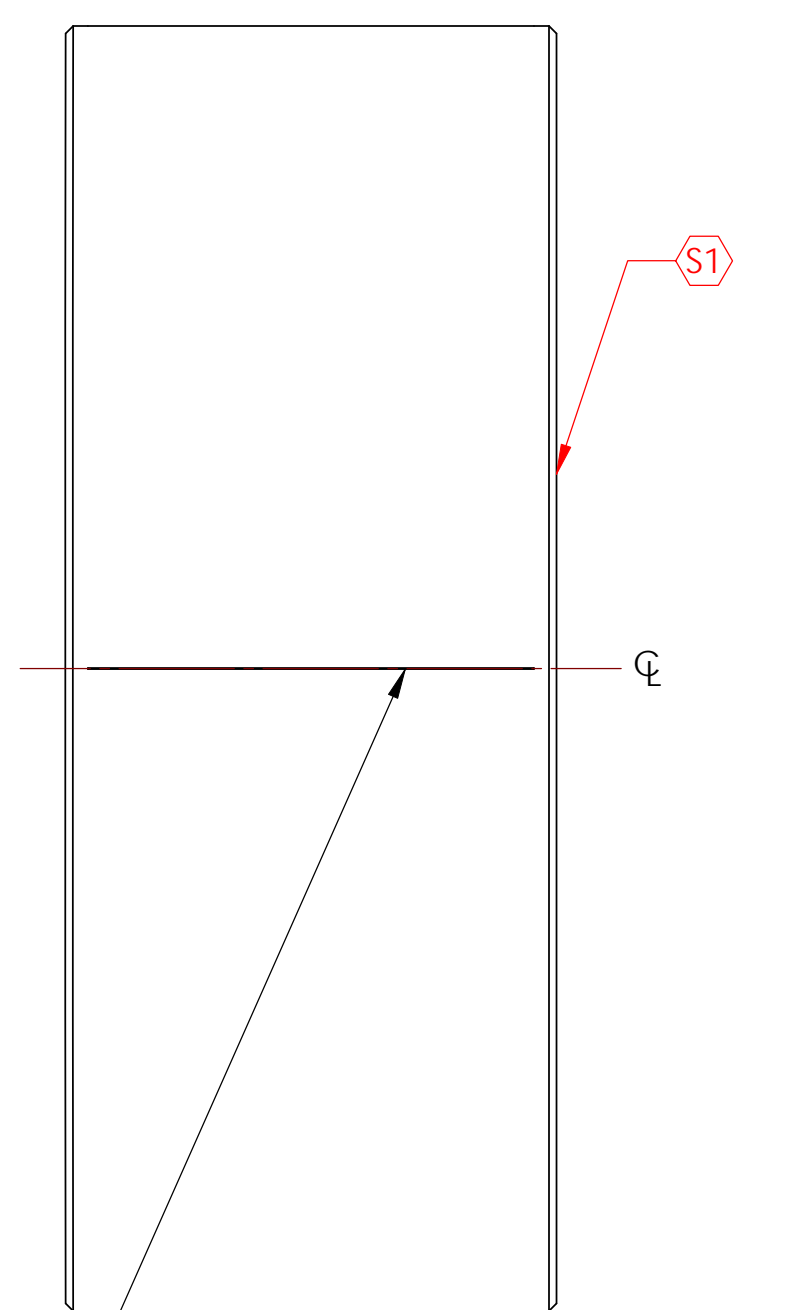
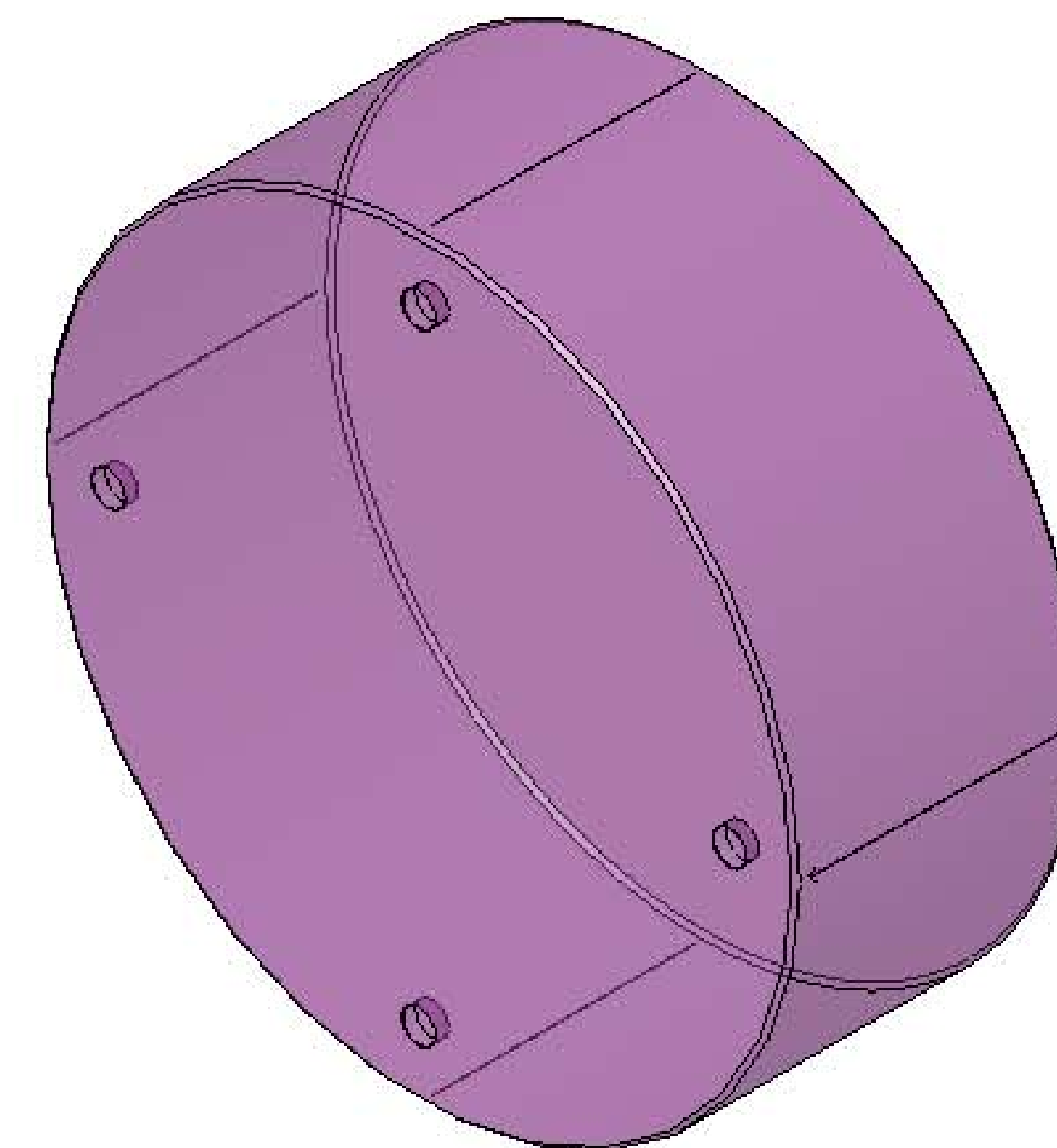
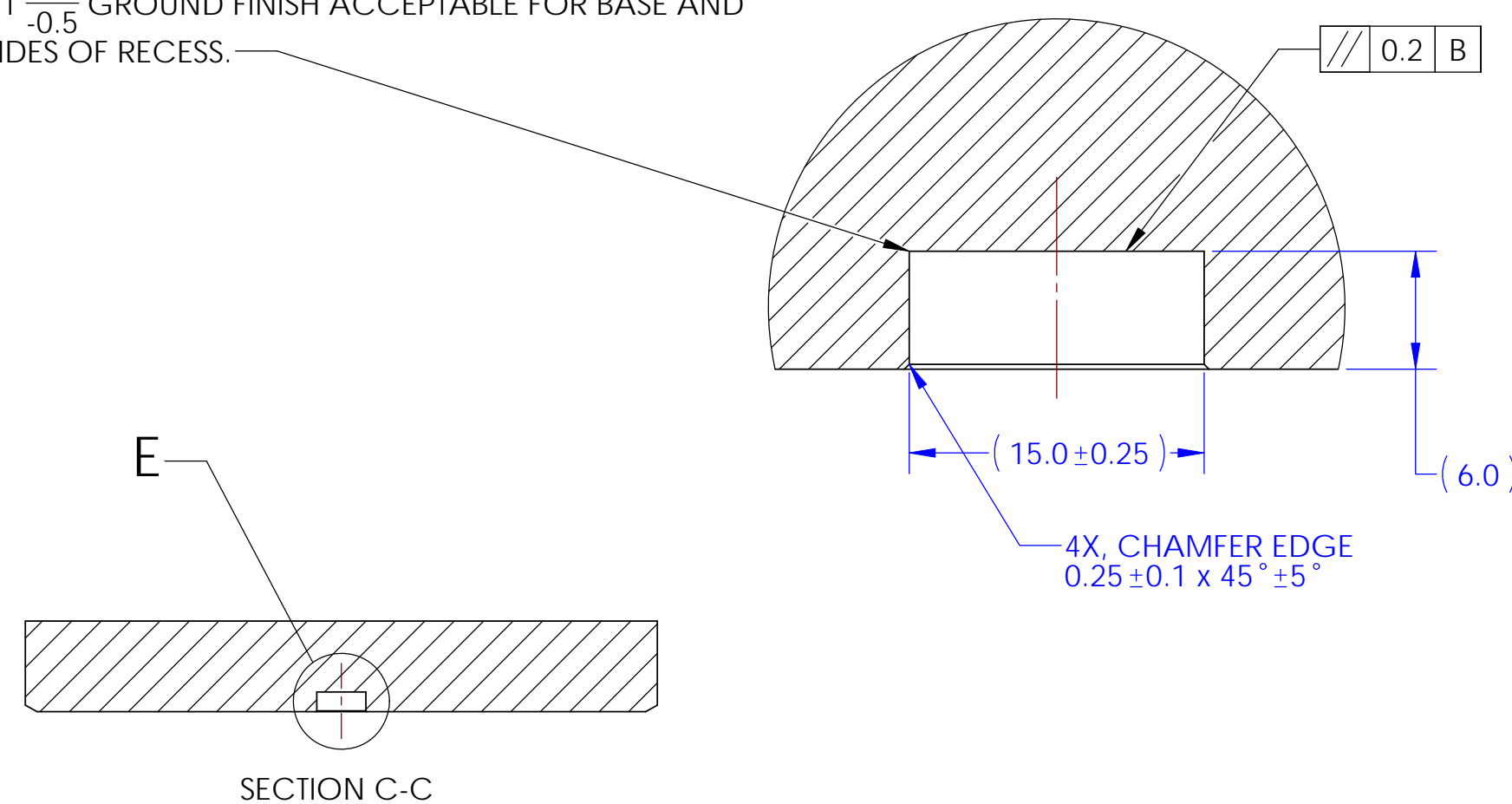
REV.	DATE	DCN #	DRAWING TREE #
v1	10/2008	E080530-v1	
v2	2-20-09	LIGO-E0900046-v1	

ETCH OR GRIND REGISTRATION MARKS  
 0.25mm ± 0.05mm WIDE x  
 118mm ± 3mm LONG MINIMUM LEGIBLE  
 DEPTH LINE ALONG  $\phi$ , CENTERED  
 BETWEEN SURFACES 'S1' AND 'S2', PARALLEL  
 TO THE CYLINDRICAL AXIS  
 (DEFINED BY DATUM FEATURE -A-)  
 WITHIN ±0.1mm AND  
 90° FROM SCRIBE LINE AT LOCATION OF  
 MINIMUM PART THICKNESS.



RADIUS AROUND BOTTOM OF RECESS  
 $R1 \begin{matrix} +0 \\ -0.5 \end{matrix}$  GROUND FINISH ACCEPTABLE FOR BASE AND  
 SIDES OF RECESS.

DETAIL E  
 SCALE 3 : 1

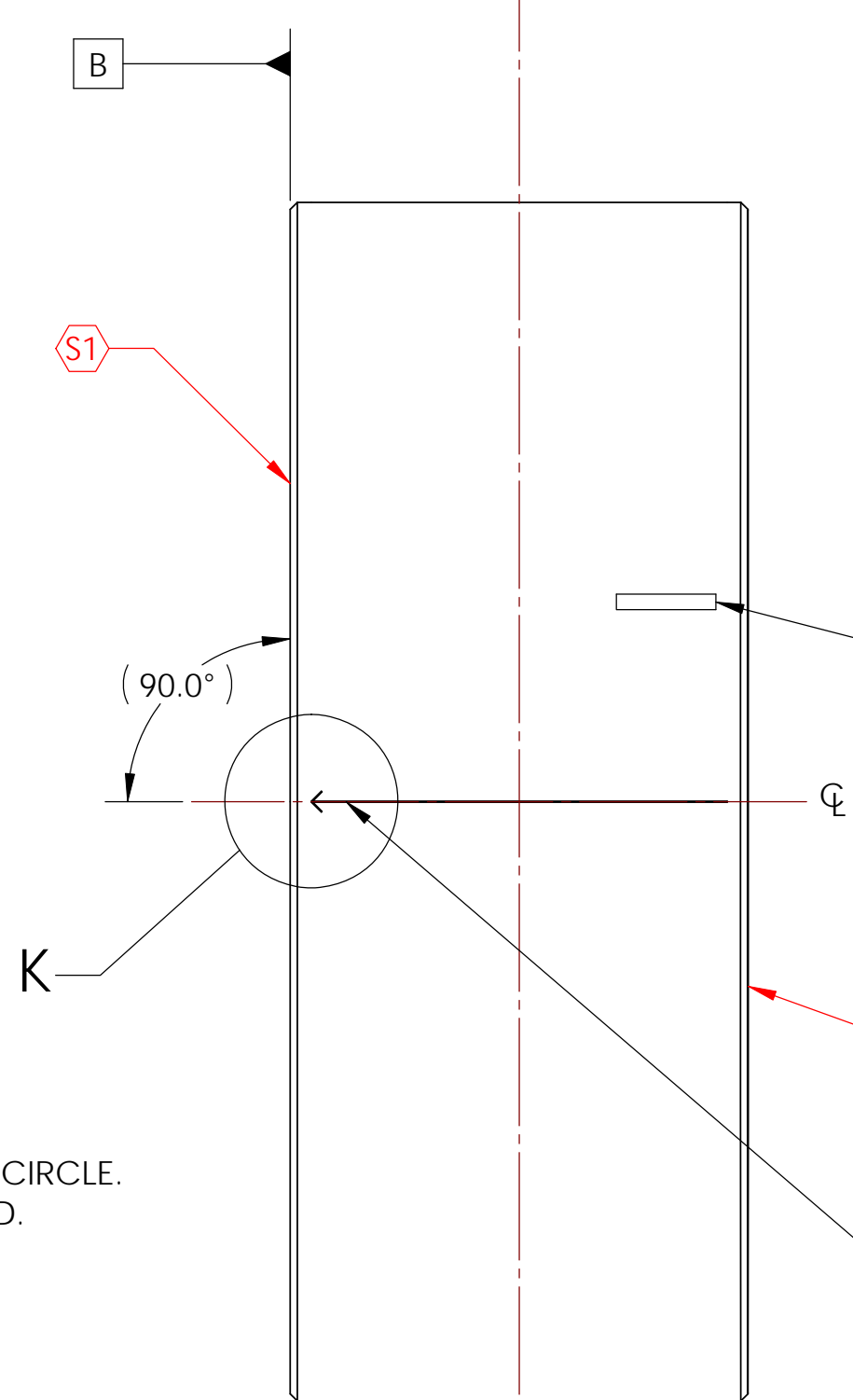


POLISH SURFACE 'S1'  
 (SEE NOTE 4)

STRADDLE THE ARROWED  
 REFERENCE LINE, INDICATING  
 PART OF MINIMUM THICKNESS  
 (REFER TO DETAIL K.)

4X,  $\phi 15.0 \pm 0.25 \sqrt{6.0}$   
 EQUALLY SPACED ON A  $280 \pm 0.5$  BOLT CIRCLE.  
 EDGE CHIPPING TO BE MINIMISED.

0.25 A

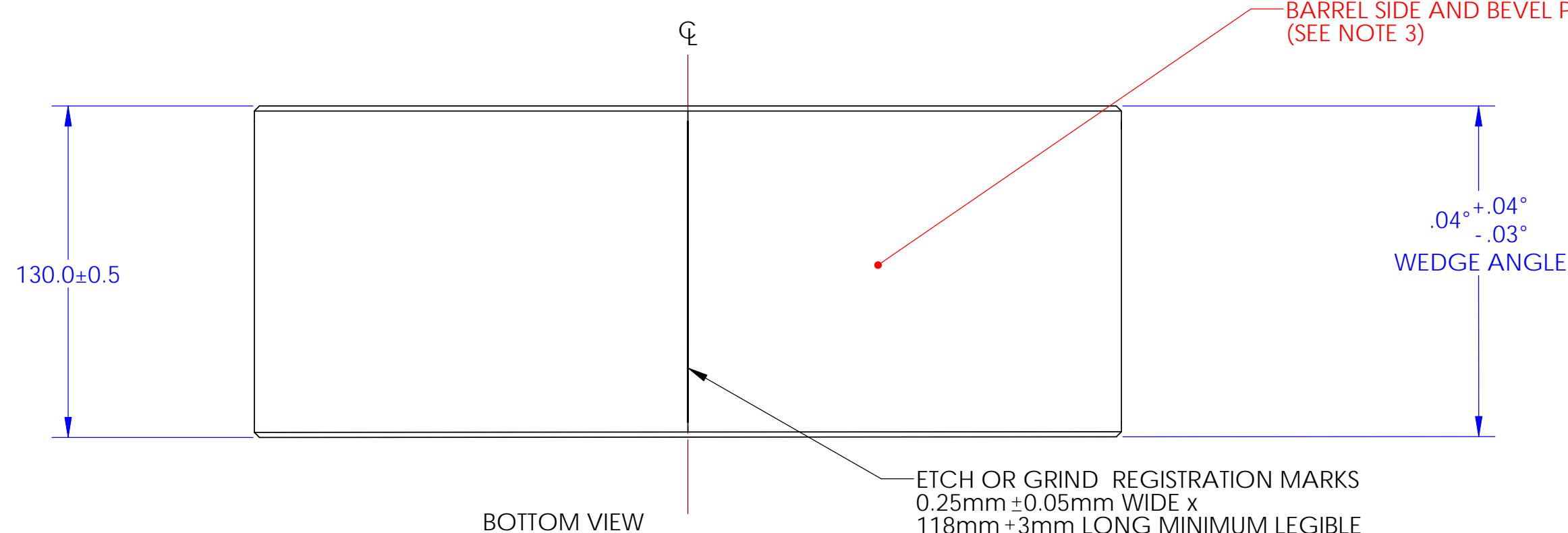


ETCH OR GRIND SERIAL  
 NUMBER, APPROX. WHERE SHOWN,  
 LETTERING APPROX. 4mm HIGH  
 (SEE NOTE 5 FOR FURTHER DETAILS)

S2 POLISH SURFACE 'S2'  
 (SEE NOTE 4)

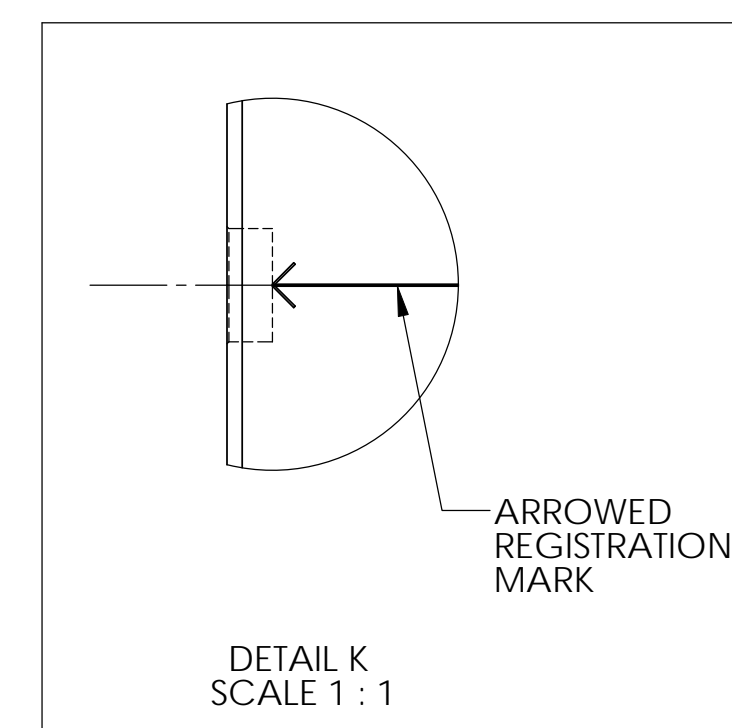
ETCH OR GRIND REGISTRATION MARKS  
 0.25mm ± 0.05mm WIDE x  
 118mm ± 3mm LONG MINIMUM LEGIBLE  
 DEPTH LINE ALONG  $\phi$ , CENTERED  
 BETWEEN SURFACES 'S1' AND 'S2' AT  
 LOCATION OF MINIMUM PART THICKNESS  
 WITHIN ± 5° CLOCKING ANGLE  
 (WITH RESPECT TO DATUM FEATURE -A-),  
 AND PARALLEL TO THE CYLINDRICAL AXIS  
 (DEFINED BY DATUM FEATURE -A-)  
 WITHIN ±0.1mm, WITH ARROW POINTING  
 TO SURFACE 'S1'.

ETCH OR GRIND REGISTRATION MARKS  
 0.25mm ± 0.05mm WIDE x  
 118mm ± 3mm LONG MINIMUM LEGIBLE  
 DEPTH LINE ALONG  $\phi$ , CENTERED  
 BETWEEN SURFACES 'S1' AND 'S2', PARALLEL  
 TO THE CYLINDRICAL AXIS  
 (DEFINED BY DATUM FEATURE -A-)  
 WITHIN ±0.1mm AND  
 180° FROM SCRIBE LINE AT LOCATION OF  
 MINIMUM PART THICKNESS.



ETCH OR GRIND REGISTRATION MARKS  
 0.25mm ± 0.05mm WIDE x  
 118mm ± 3mm LONG MINIMUM LEGIBLE  
 DEPTH LINE ALONG  $\phi$ , CENTERED  
 BETWEEN SURFACES 'S1' AND 'S2', PARALLEL  
 TO THE CYLINDRICAL AXIS  
 (DEFINED BY DATUM FEATURE -A-)  
 WITHIN ±0.1mm AND  
 90° FROM SCRIBE LINE AT LOCATION OF  
 MINIMUM PART THICKNESS.

S3 BARREL SIDE AND BEVEL POLISH  
 (SEE NOTE 3)



- MANUFACTURING NOTES:
- DO NOT SCALE FROM DRAWING.
  - INTERPRET DRAWING AS PER ANSI Y14.5M 1994.
  - BARREL SIDE AND BEVEL POLISH PER E080513-v2.
  - FINISH SURFACES 'S1' AND 'S2' AS PER E080513-v2.
  - REFER TO E080513-v2 OR MORE INFORMATION ON SERIAL NUMBER.

PARTS LIST	
NOTES: (UNLESS OTHERWISE SPECIFIED)	
DIMENSIONS ARE IN MILLIMETERS (mm)	
TOLERANCES	
XX ± 0.1	
XX ± 0.05	
ANGULAR ± 0.1°	
MATERIALS	
REFER TO E080037-v1	NEXT ASSY: COMPENSATION PLATE (CP)
FINISH	PART NAME: (CP) SUBSTRATE
SEE NOTES	
NAME	DATE
DRAWN	C. TORRE
CHECKED	D. COYNE
APPROVED	D. COYNE
DATE	20/NOV/09
SIZE	D
DWG. NO.	D080659
SCALE	1:2
PROJECTION	
SHEET	1 OF 1
REV.	v2