

4

3

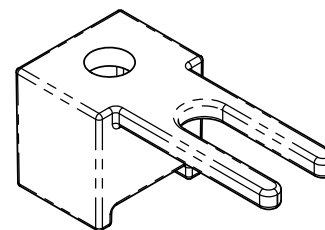
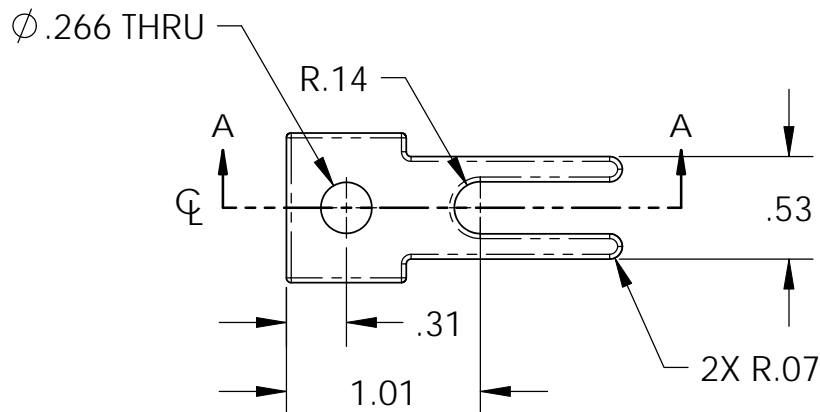
2

1

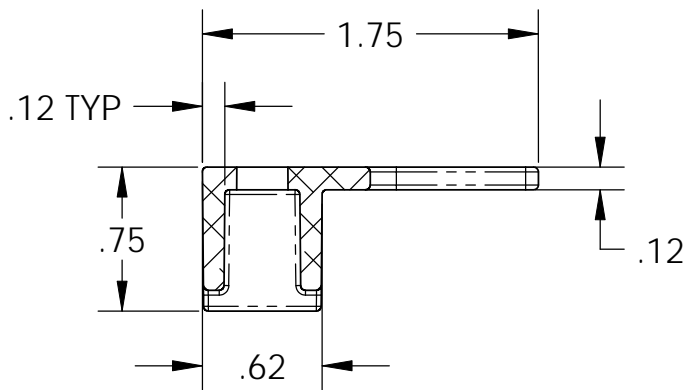
NOTES CONTINUED:

- 5. BAG AND TAG PARTS WITH THEIR DRAWING PART NUMBER, REVISION, VARIANT OR "TYPE" (IF APPLICABLE), AND QUANTITY.
- EXAMPLE: DXXXXXX-vy, TYPE-xx, QTY:TBD
- 6. DRAFT HAS BEEN ADDED TO DESIGN TO ACCOMMODATE FOR INJECTION MOLDING.
- ⑦ VICTREX 450G OR EQUIVALENT. VIRGIN PEEK RESIN, NO OTHER ADDITIVES.

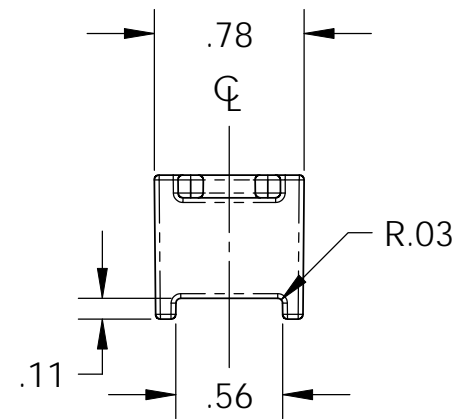
REV.	DATE	DCN #	DRAWING TREE #
v1	29 OCT 2009	E0900352	E0900353
-	-	-	-
-	-	-	-



ISOMETRIC VIEW



SECTION A-A



NOTES AND TOLERANCES: (UNLESS OTHERWISE SPECIFIED)

DIMENSIONS ARE IN INCHES

TOLERANCES:  
XX  $\pm .03$   
XXX  $\pm .005$

ANGULAR  $\pm 0.5^\circ$

- 1. INTERPRET DRAWING PER ASME Y14.5-1994.
- 2. REMOVE ALL SHARP EDGES, R.02 MIN.
- 3. DO NOT SCALE FROM DRAWING.
- 4. ALL MACHINING FLUIDS MUST BE FULLY SYNTHETIC, FULLY WATER SOLUBLE AND FREE OF SULFUR, SILICONE, AND CHLORINE.

MATERIAL PEEK ⑦ FINISH 32  $\mu$ inch



CALIFORNIA INSTITUTE OF TECHNOLOGY  
MASSACHUSETTS INSTITUTE OF TECHNOLOGY

SYSTEM ADVANCED LIGO SUB-SYSTEM MULTIPLE

NEXT ASSY MULTIPLE ASSY

PART NAME		UHV COMPATIBLE CABLE CLAMP	
DESIGNER	R. ABBOTT	14 DEC 2009	SIZE DWG. NO.
DRAFTER	B. MOORE	15 DEC 2009	A D09000004
CHECKER	M. MEYER	13 JAN 2010	REV. v1
APPROVAL			SCALE: 1:1 PROJECTION:  SHEET 1 OF 1

4

3

2

1