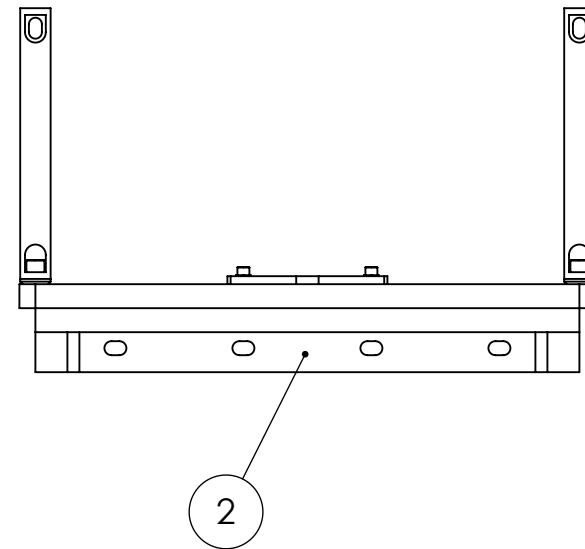
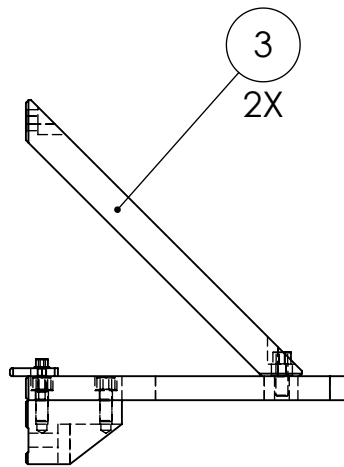
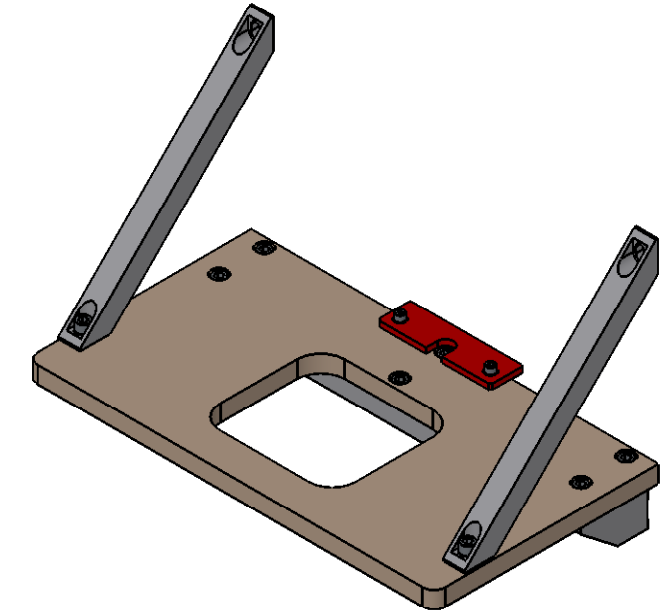
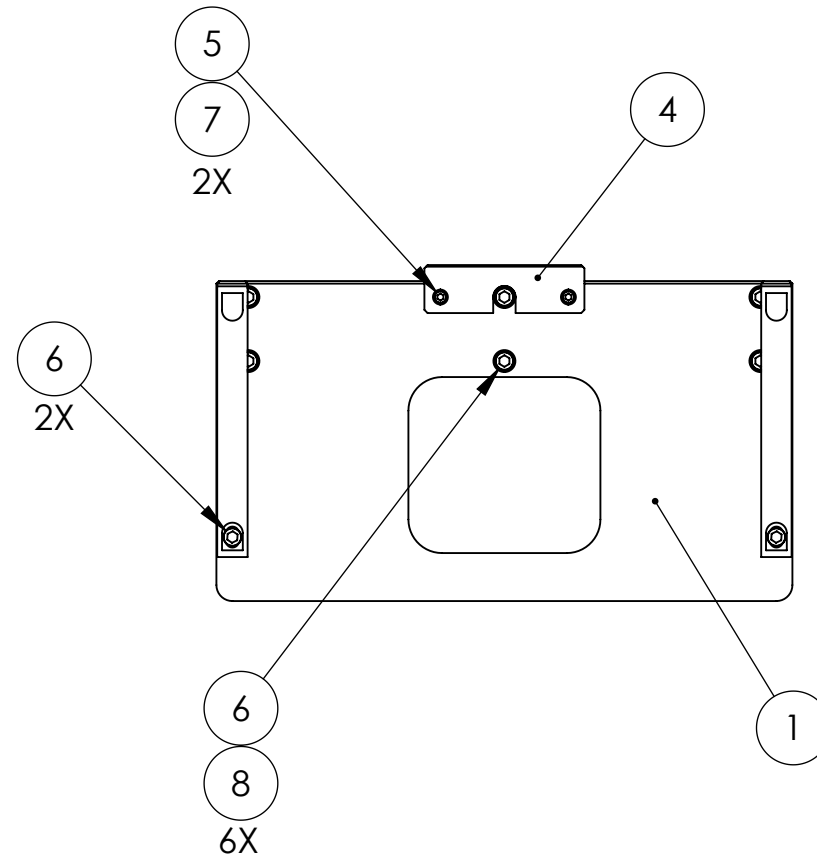


D0900335_Asm-Horiz_Gs-13_Shelf-HAM_ISI, PART PDM REV: X-007, DRAWING PDM REV: X-002

NOTES CONTINUED:

- 5. Refer to LIGO-E0900216 for detailed assembly instructions.
- 6. Weight of finished assembly: 19 lbs

REV.	DATE	DCN #	DRAWING TREE #
v1	11 JAN 2010	E1000001	T0900305
-	-	-	-



ITEM NO.	PART NUMBER	DESCRIPTION	SIZE / TYPE	MATERIAL	QTY.
8	UCC_WFV-38	Vented Washer, 3/8"	3/8" (.39"x.63")	18-8 SS	6
7	UCC_WFV-25	Vented Washer, 1/4"	1/4" (.26"x.47")	18-8 SSTL	2
6	HOLOKROME_78098	SHCS, 3/8"-16x1.0"	3/8"-16x1.0"	18-8 SS	8
5	HOLOKROME_78058	SHCS, 1/4"-20x.75"	1/4"-20x.75"	18-8 SS	2
4	D0900832	Locating Bar, Horiz GS-13 Shelf, HAM ISI		6061-T6 Al	1
3	D0900338	Brace, Horiz GS-13 Shelf, HAM ISI		6061-T6 Al	2
2	D0900337	Mounting Bar, Horiz GS-13 Shelf, HAM ISI		6061-T6 Al	1
1	D0900336	Plate, Horiz GS-13 Shelf, HAM ISI		6061-T6 Al	1

PARTS LIST

<p>NOTES AND TOLERANCES: (UNLESS OTHERWISE SPECIFIED)</p> <p>1. INTERPRET DRAWING PER ASME Y14.5-1994. 2. REMOVE ALL SHARP EDGES, R.02 MIN. 3. DO NOT SCALE FROM DRAWING. 4. ALL MACHINING FLUIDS MUST BE FULLY SYNTHETIC, FULLY WATER SOLUBLE AND FREE OF SULFUR, SILICONE, AND CHLORINE.</p>		<p>LIGO CALIFORNIA INSTITUTE OF TECHNOLOGY MASSACHUSETTS INSTITUTE OF TECHNOLOGY</p>		<p>PART NAME Asm, Horiz GS-13 Shelf, HAM ISI</p>	
<p>DIMENSIONS ARE IN INCHES</p> <p>TOLERANCES: .XX ± .015 .XXX ± .005</p> <p>ANGULAR ± 0.5°</p>	<p>MATERIAL See BOM</p>	<p>FINISH See BOM</p>	<p>SYSTEM ADVANCED LIGO</p>	<p>SUB-SYSTEM SEI</p>	<p>DESIGNER Andy Stein 27 FEB 2009 DRAFTER Andy Stein 04 JAN 2010 CHECKER APPROVAL Ken Mason 13 JAN 2010</p>
			<p>NEXT ASSY D0900124</p>	<p>SIZE DWG. NO. B D0900335</p>	<p>REV. v1</p>
			<p>SCALE: 1:6</p>	<p>PROJECTION:</p>	<p>SHEET 1 OF 1</p>