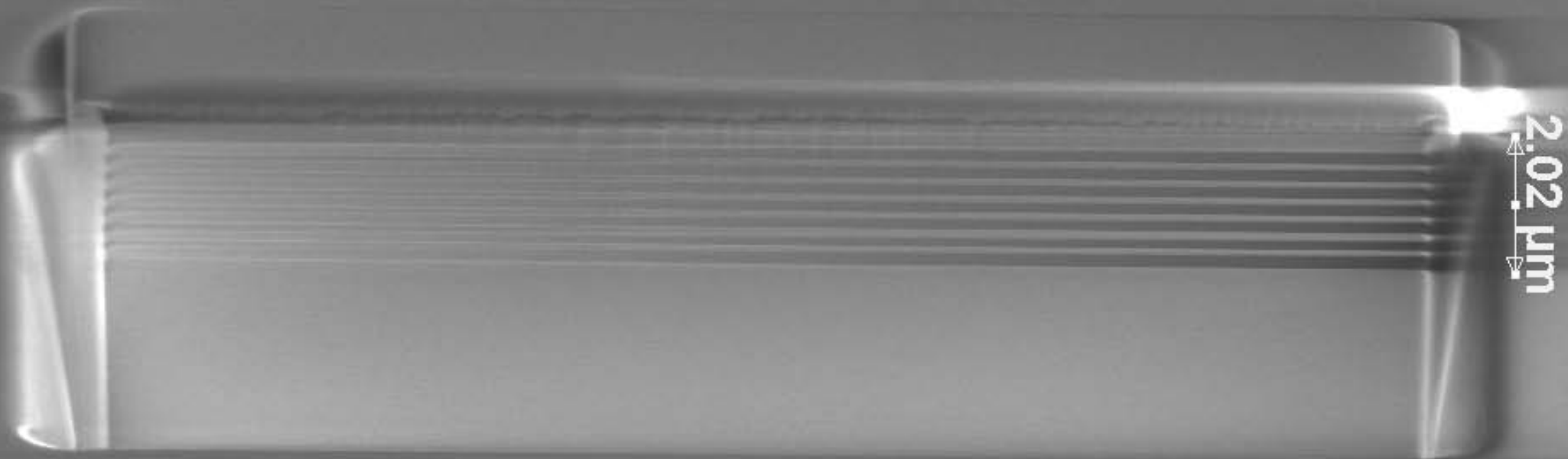
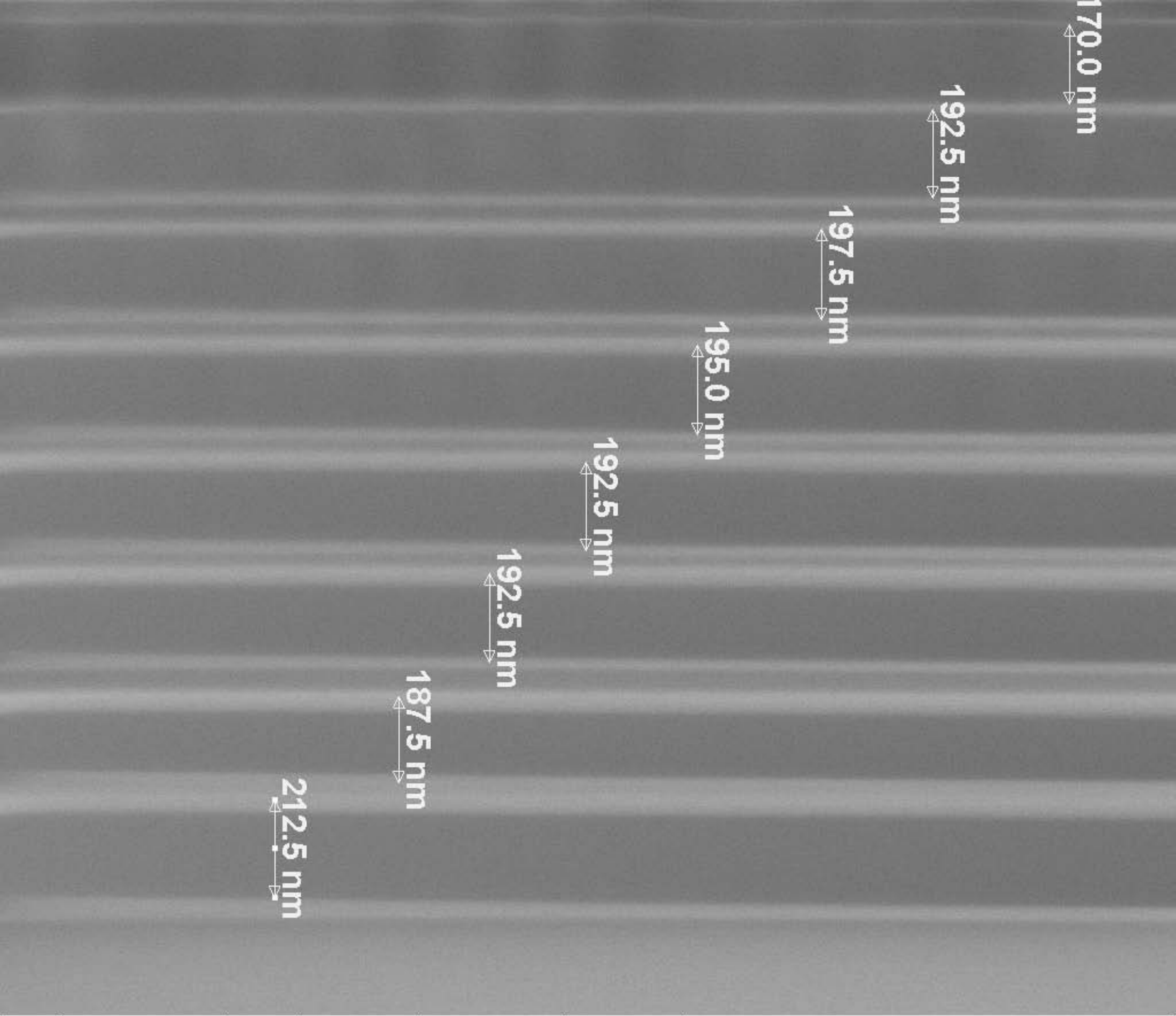


LIGO-T0900026-V1
PNNL result on LIGO1 ITM
Coating witness sample



2.02 μm



170.0 nm

192.5 nm

197.5 nm

195.0 nm

192.5 nm

192.5 nm

187.5 nm

212.5 nm

1 μm

WitnessP-S1:0X815 T=3 @ 1064nm



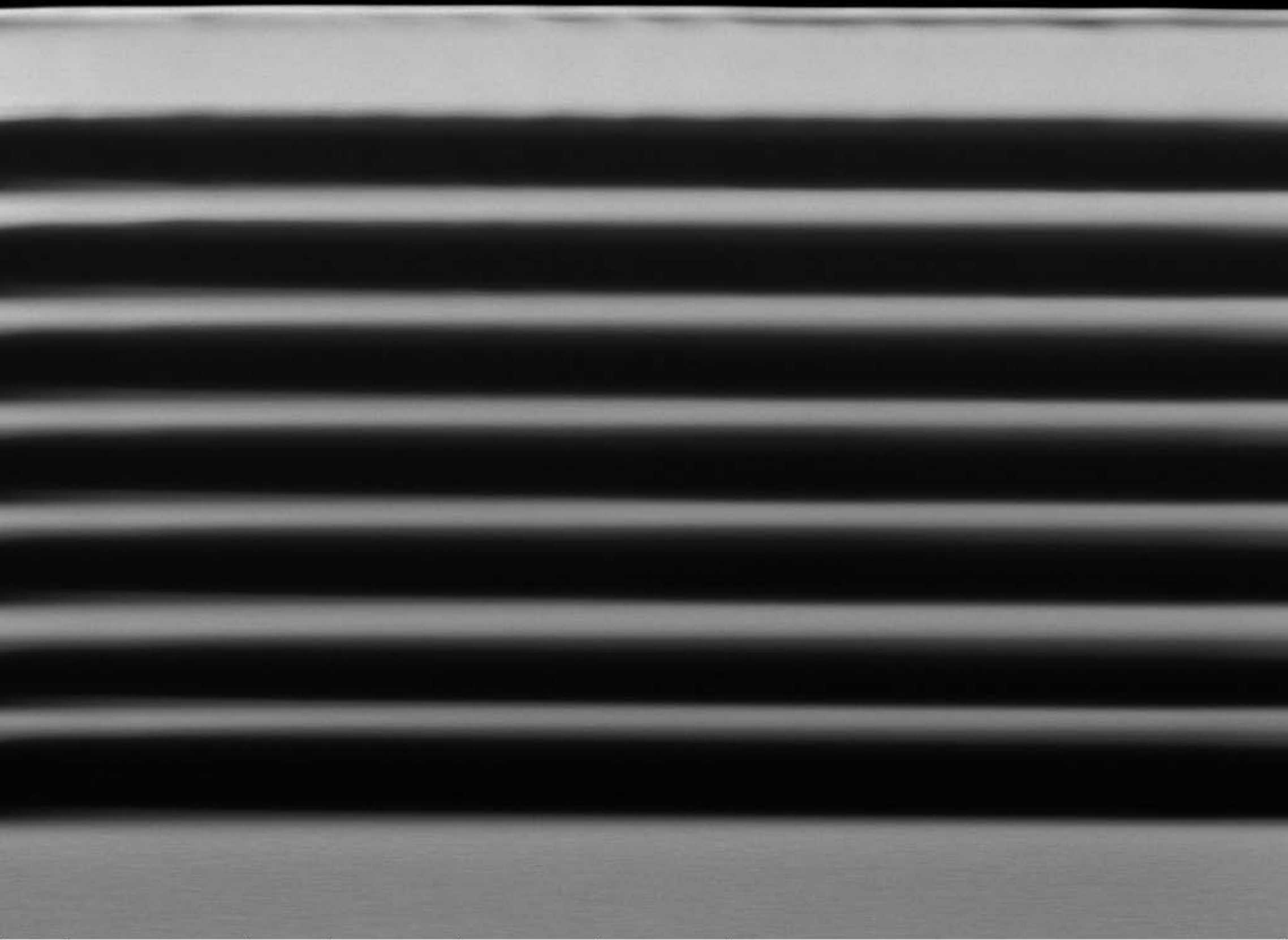
1/23/2009
9:11:04 AM

det
ETD

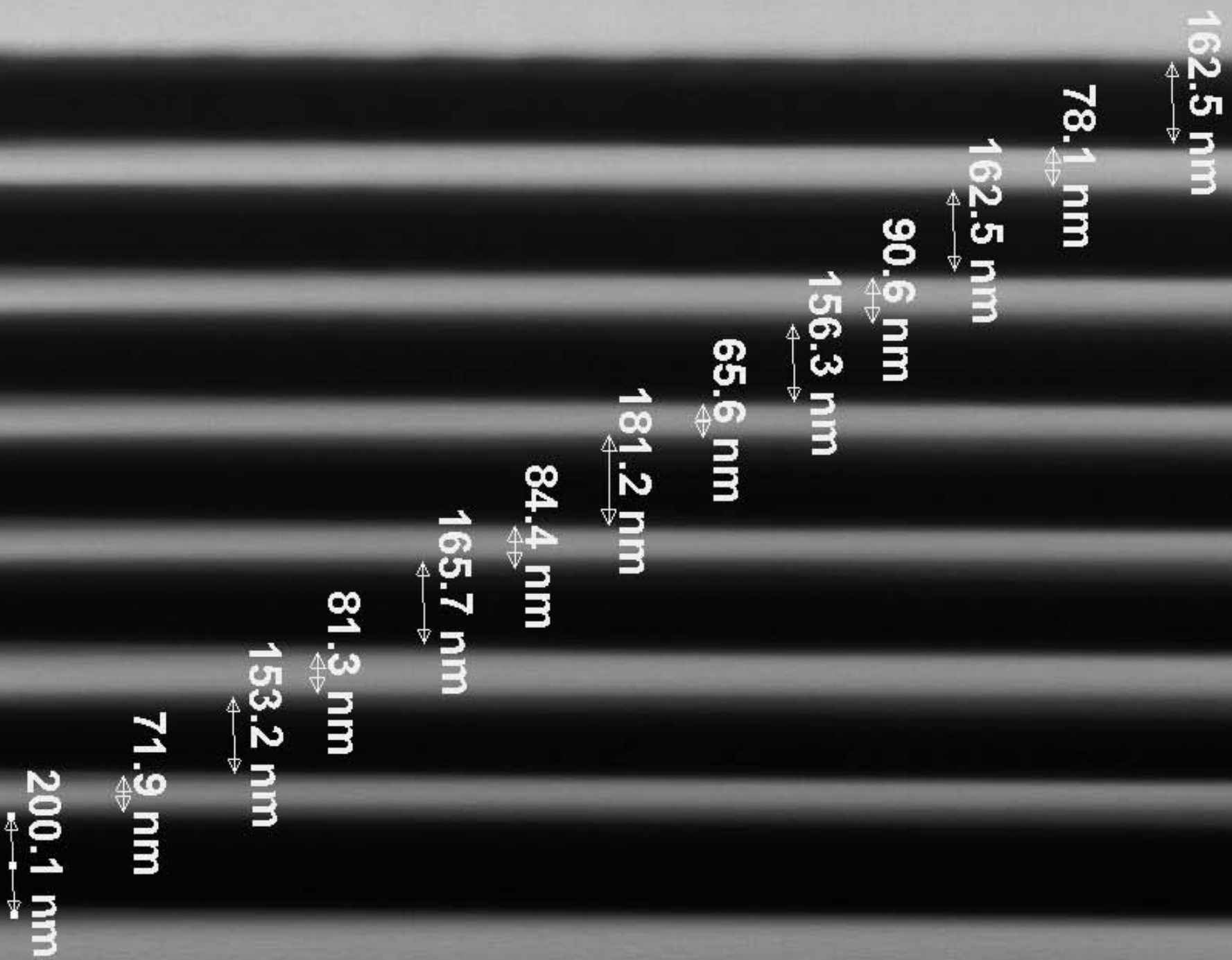
HFW
2.56 μm

mag □
100 000 x

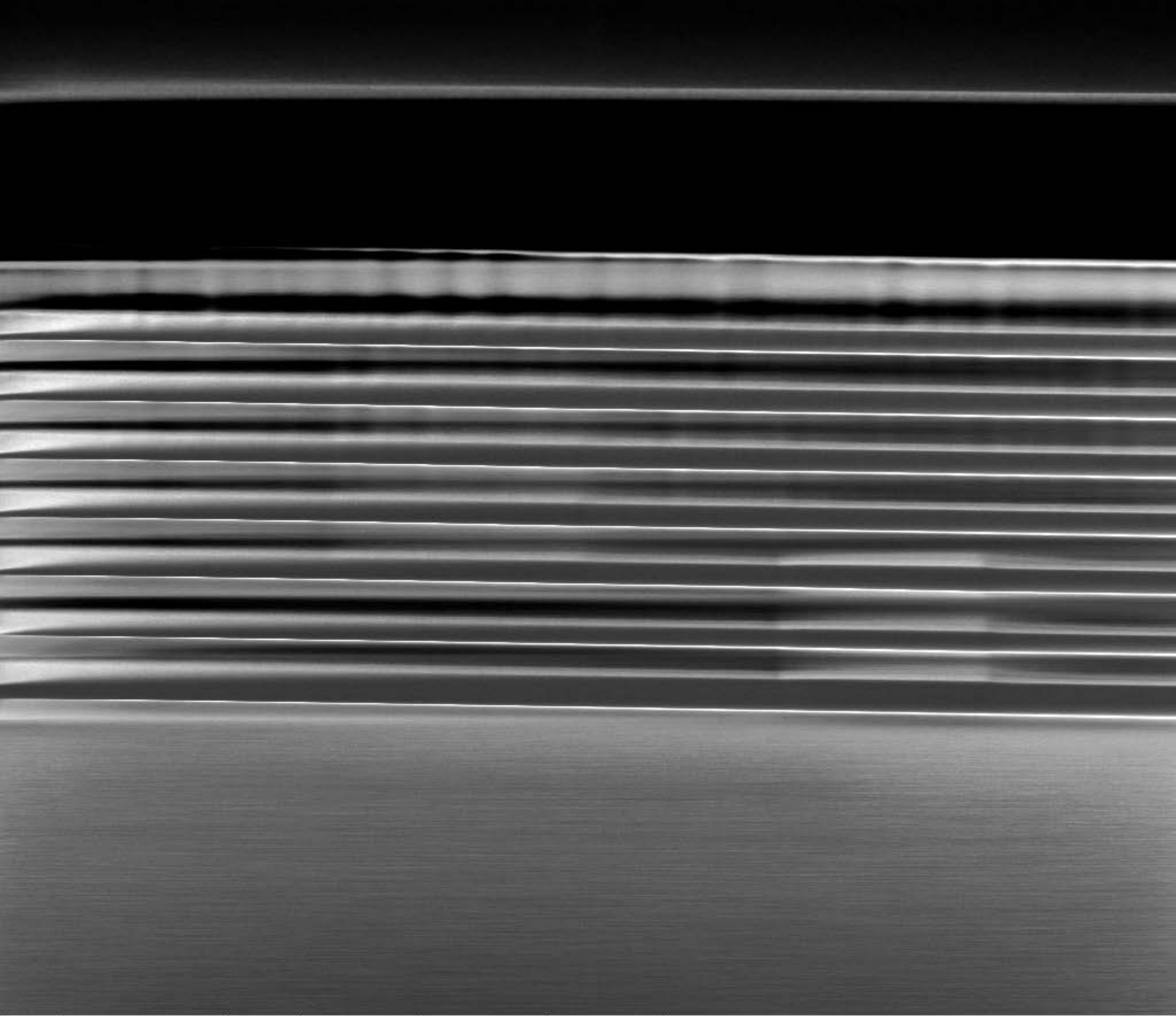
WD
4.0 mm



	1/23/2009	det	HFW	mag <input type="checkbox"/>	WD	← 1 μm → WitnessP-S1:0X815 T=3 @ 1064nm
	9:15:44 AM	TLD	3.20 μm	80 000 x	4.0 mm	



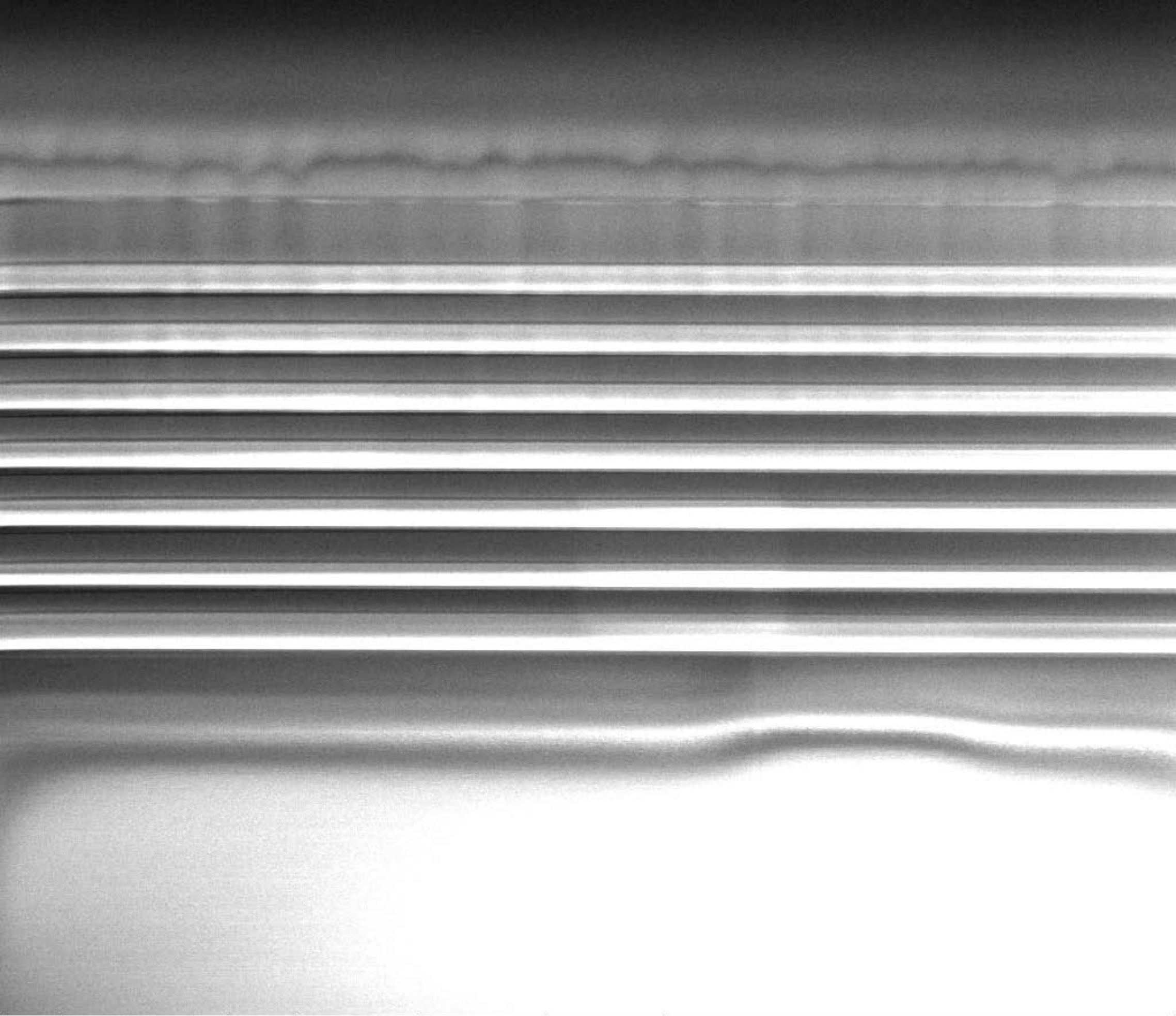
	1/23/2009 9:20:12 AM	det TLD	HFW 1.02 μm	mag <input type="checkbox"/> 250 000 x	WD 4.0 mm	 400 nm WitnessP-S1:0X815 T=3 @ 1064nm
--	-------------------------	------------	---------------------------	---	--------------	--



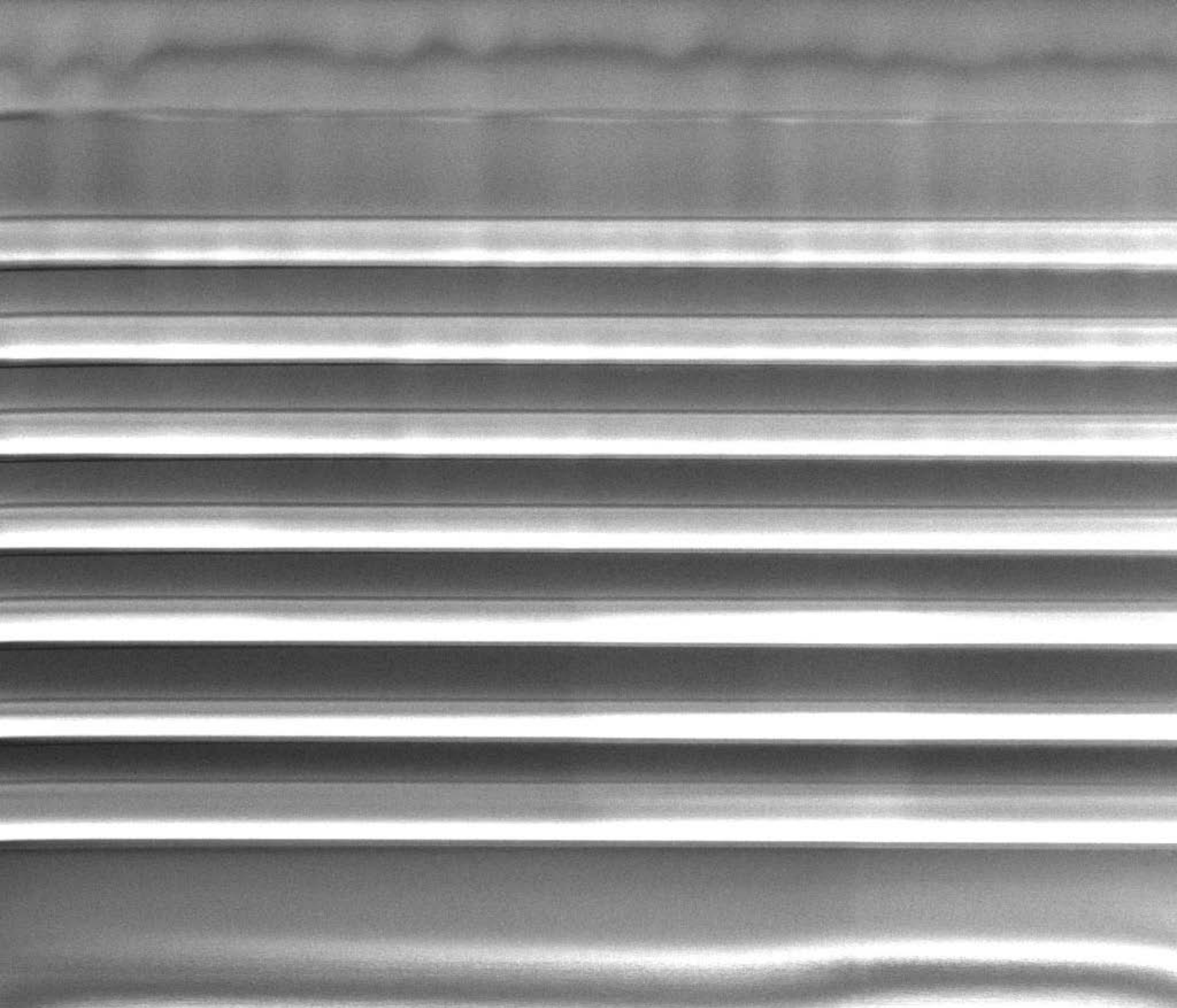
	1/23/2009	det	HFW	mag <input type="checkbox"/>	WD	← 2 μm →
	9:23:50 AM	TLD	5.12 μm	50 000 x	4.1 mm	WitnessP-S1:0X815 T=3 @ 1064nm



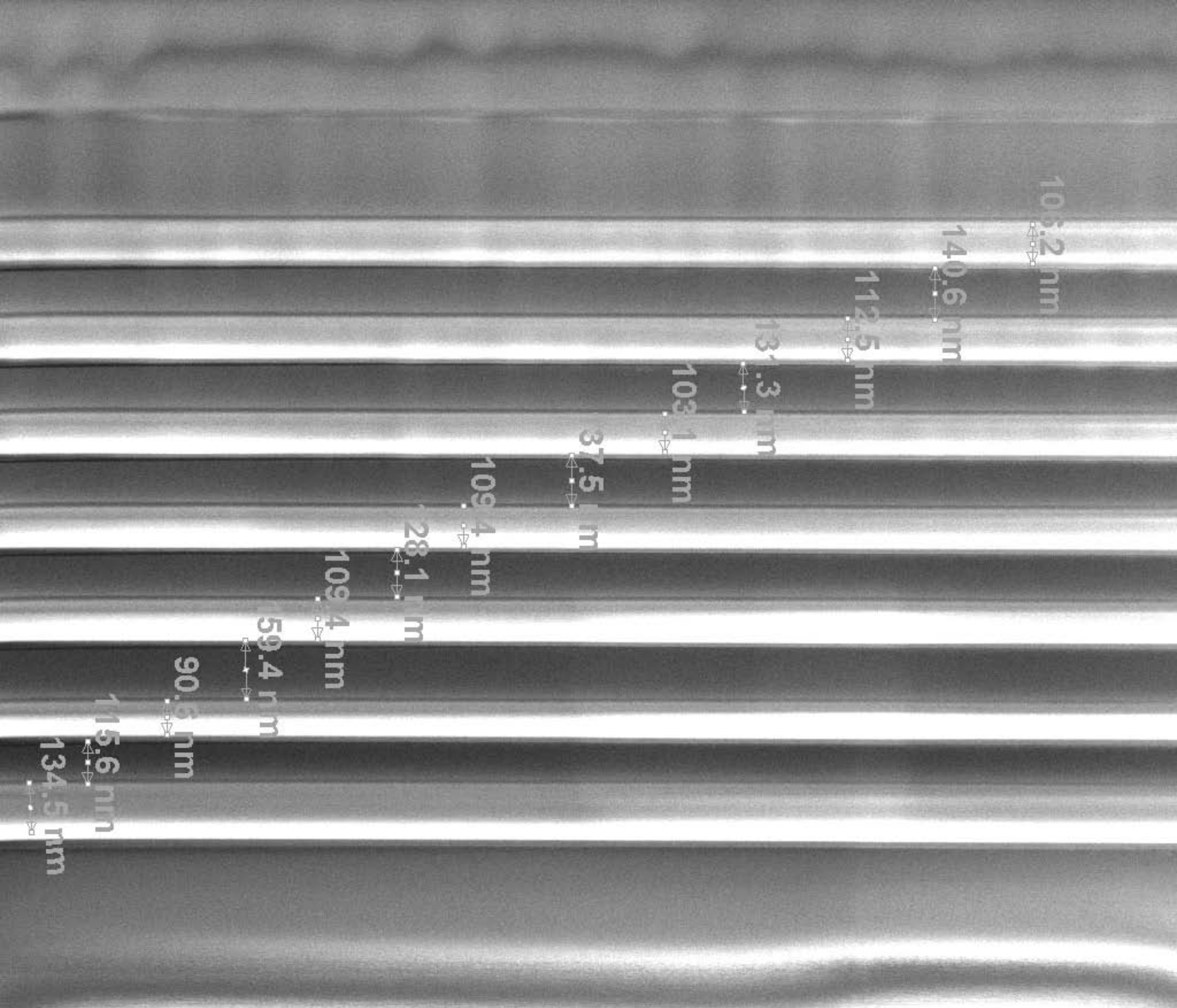
	1/23/2009	det	HFW	mag □	WD	← 10 μm →
	9:25:49 AM	TLD	25.6 μm	10 000 x	4.1 mm	WitnessP-S1:0X815 T=3 @ 1064nm

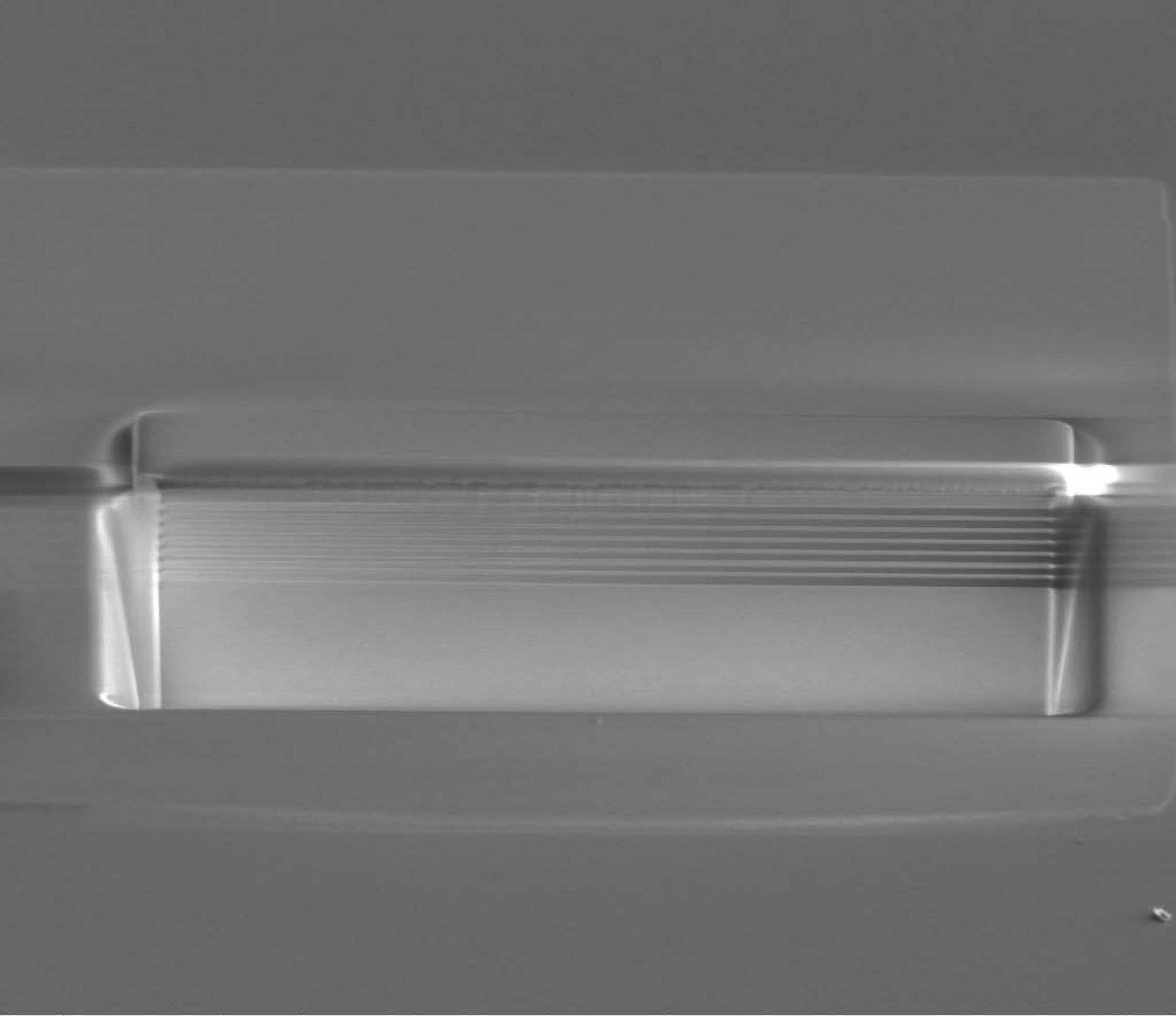


	1/23/2009	det	HFW	mag <input type="checkbox"/>	WD	← 2 μm →
	9:29:26 AM	TLD	5.12 μm	50 000 x	4.1 mm	



	1/23/2009	det	HFW	mag □	WD	← 1 μm → WitnessP-S1:0X815 T=3 @ 1064nm
	9:31:02 AM	TLD	3.20 μm	80 000 x	4.1 mm	





	1/23/2009	det	HFW	mag □	WD	← 10 μm →
	9:04:19 AM	ETD	25.6 μm	10 000 x	4.0 mm	WitnessP-S1:0X815 T=3 @ 1064nm