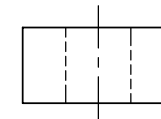
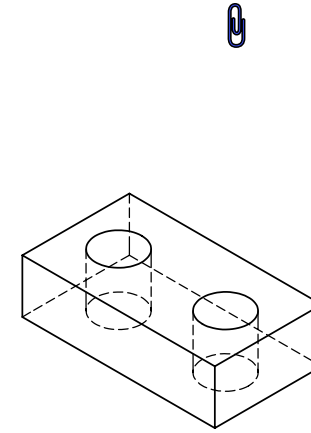
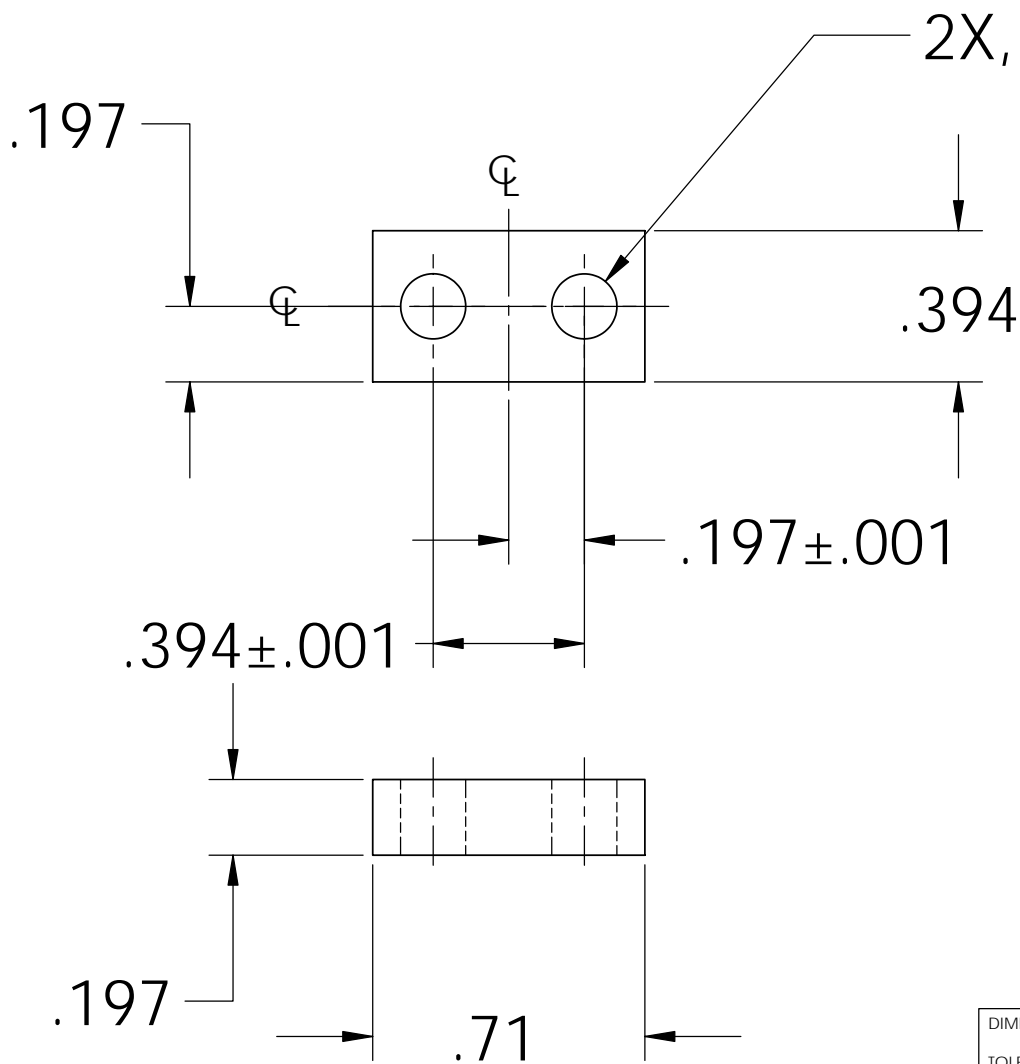



NOTES: (UNLESS OTHERWISE SPECIFIED)

1. DIMENSIONS IN INCHES

2. ALL MACHINING FLUIDS SHALL BE WATER SOLUBLE AND FREE OF SULFUR, CHLORINE AND SILICONE, SUCH AS CINCINNATI MILACRON'S CIMTECH 410 (STAINLESS STEEL)

REV.	DATE	DCN #	DRAWING TREE #
A	24th JUNE 2004	E040303-00	



DRAWN	NAME	DATE	 CALIFORNIA INSTITUTE OF TECHNOLOGY MASSACHUSETTS INSTITUTE OF TECHNOLOGY
	CIT	02/02	
CHECKED			SYSTEM ADVANCED LIGO
			SUB-SYSTEM SUS
			NEXT ASSY LIBRARY OF CLAMPS
MATERIAL	COMMENTS:		PART NAME LOWER BLADE CLAMP LOWER SIDE
300 SERIES STAINLESS			SIZE DWG. NO. REV.
FINISH			A D020308 A
	SCALE: NTS		SHEET 1 OF 1