

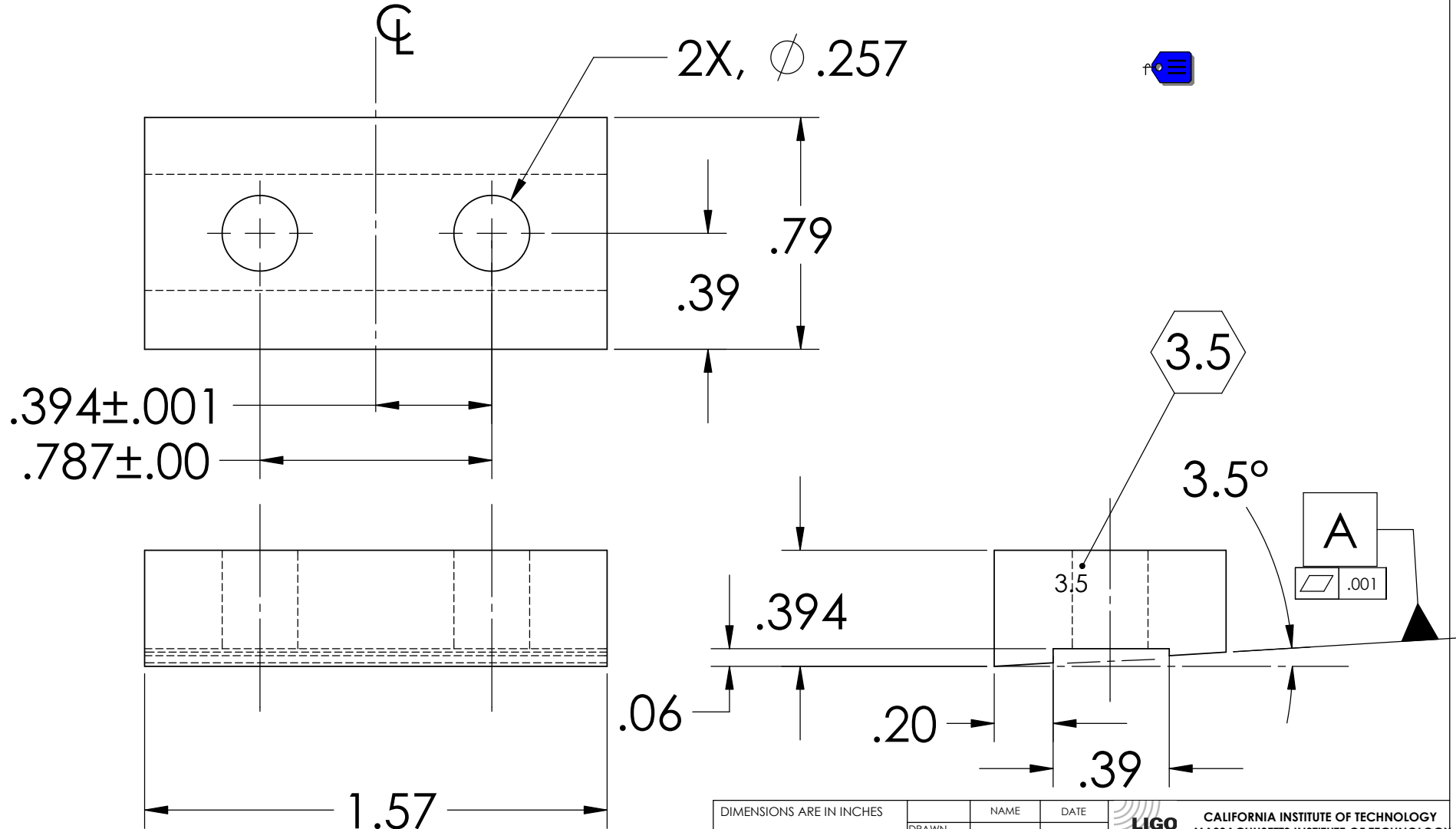
NOTES: (UNLESS OTHERWISE SPECIFIED)


1. DIMENSIONS IN INCHES

2. ALL MACHINING FLUIDS SHALL BE WATER SOLUBLE AND FREE OF SULFUR, CHLORINE AND SILICONE, SUCH AS CINCINNATI MILACRON'S CIMTECH 410 (STAINLESS STEEL)

③ USING A VIBRATORY TOOL MARK PART AS INDICATED

REV.	DATE	DCN #	DRAWING TREE #



DIMENSIONS ARE IN INCHES TOLERANCES: .XX ±0.01 .XXX ±0.005 ANGULAR ±.25°	NAME	DATE	 CALIFORNIA INSTITUTE OF TECHNOLOGY MASSACHUSETTS INSTITUTE OF TECHNOLOGY IGR-UNIVERSITY OF GLASGOW / GEO-400-GROUP
	DRAWN	05/02	
MATERIAL	CIT/RJ		SYSTEM
300 Series Stainless	CHECKED		SUB-SYSTEM
FINISH			SUS
	COMMENTS:		NEXT ASSY
			LIBRARY OF CLAMPS
			PART NAME
			UPPER BLADE CLAMP UPPERSIDE ANGLED (3.5°)
	SIZE	DWG. NO.	REV.
	A	D020690	00
	SCALE: NTS		SHEET 1 OF 1