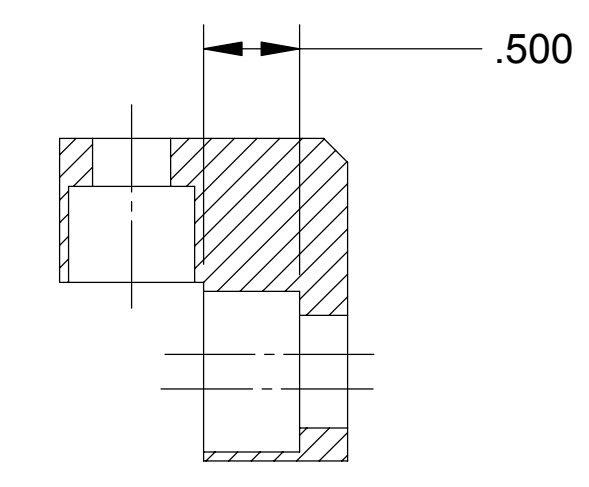
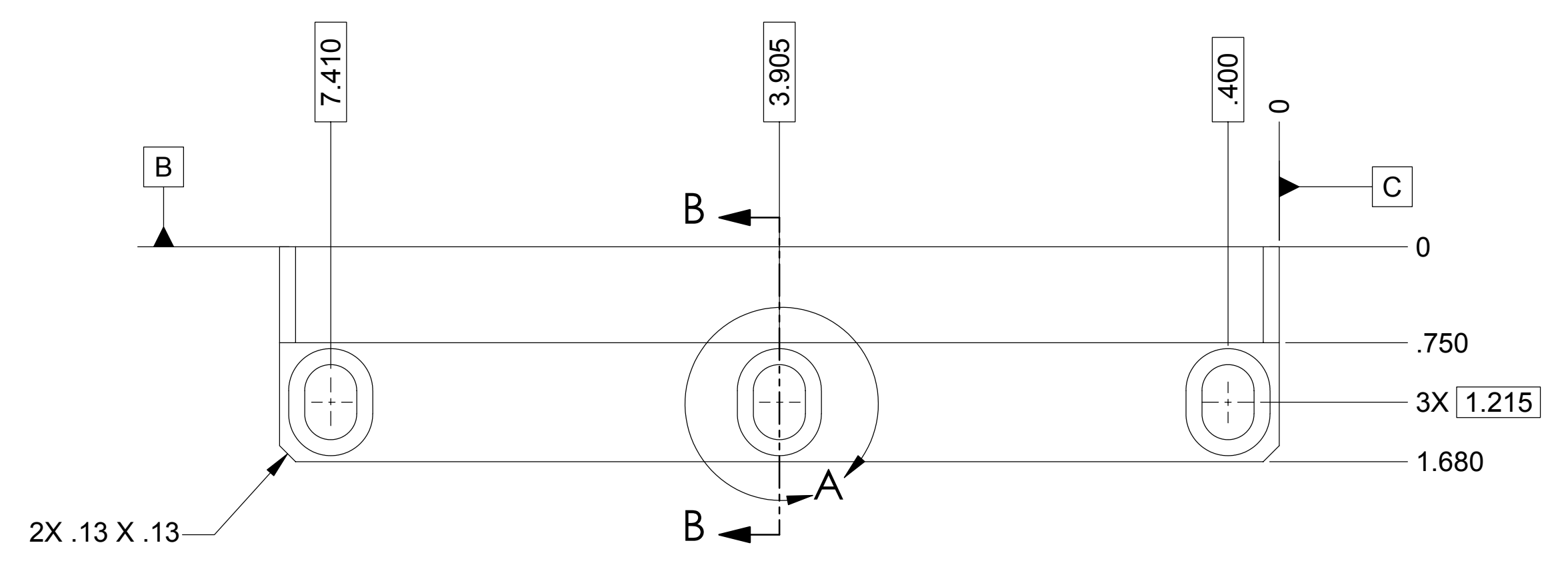
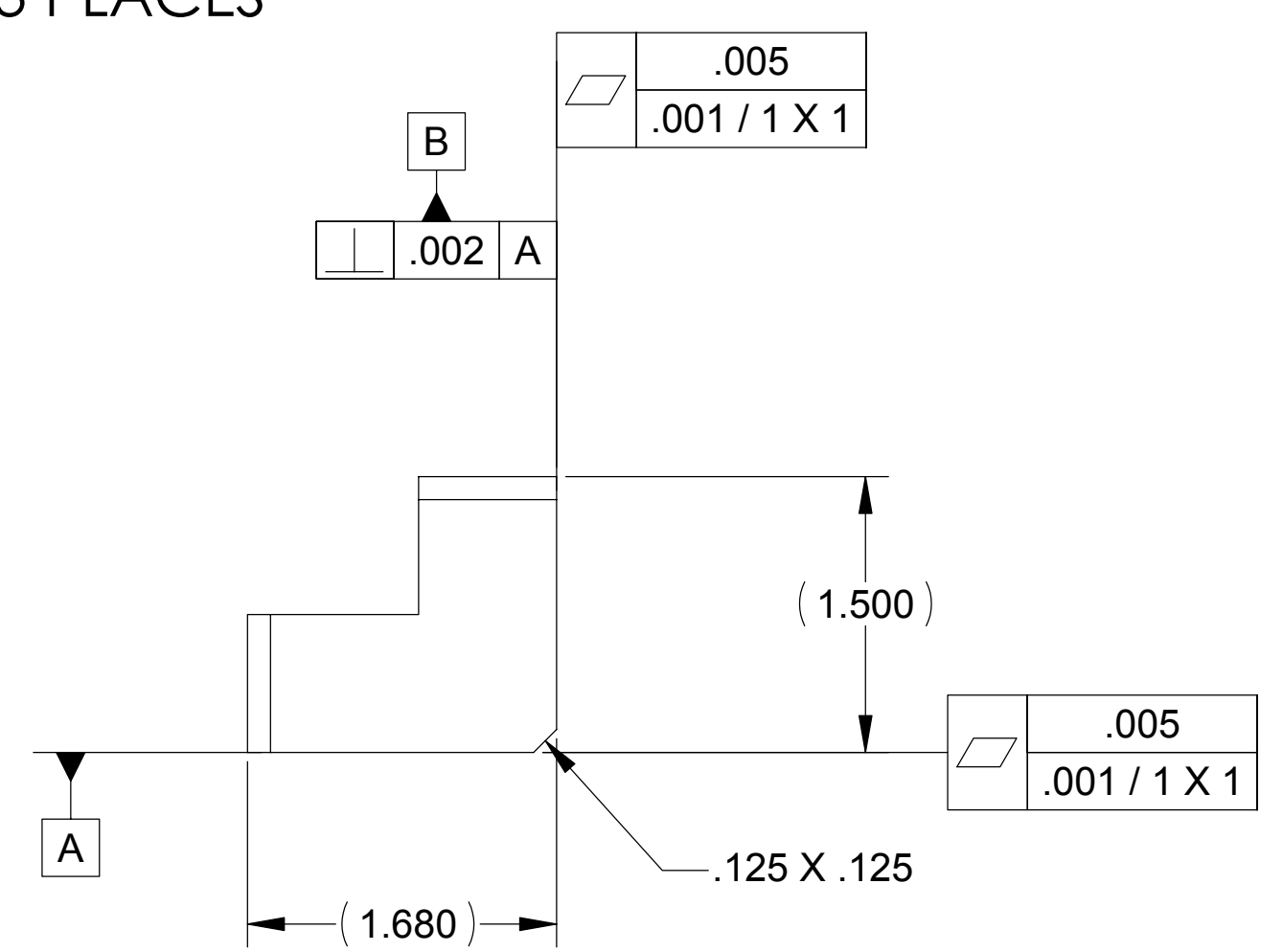
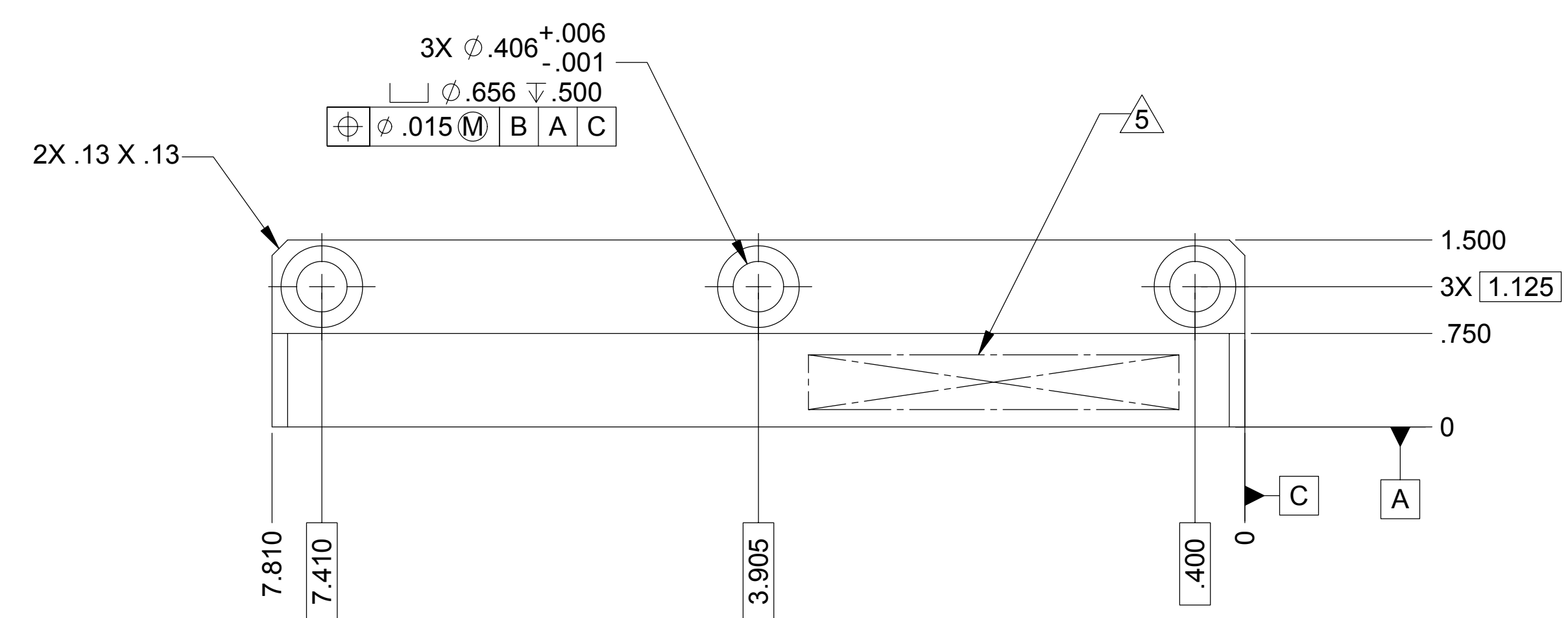


| LTR | | ZONE | DESCRIPTION | REVISIONS | | | | | | | | | | | | | | | |
|-----|-----|------|-------------|-----------|------|----|------|----|--------------|--|--|--|--|--|--|--|--|--|--|
| DWN | CHK | ENGR | STRESS | MATL | THRM | ME | PROJ | QA | RELEASE DATE | | | | | | | | | | |
| A | | | | | | | | | | | | | | | | | | | |
| | | | | | | | | | | | | | | | | | | | |

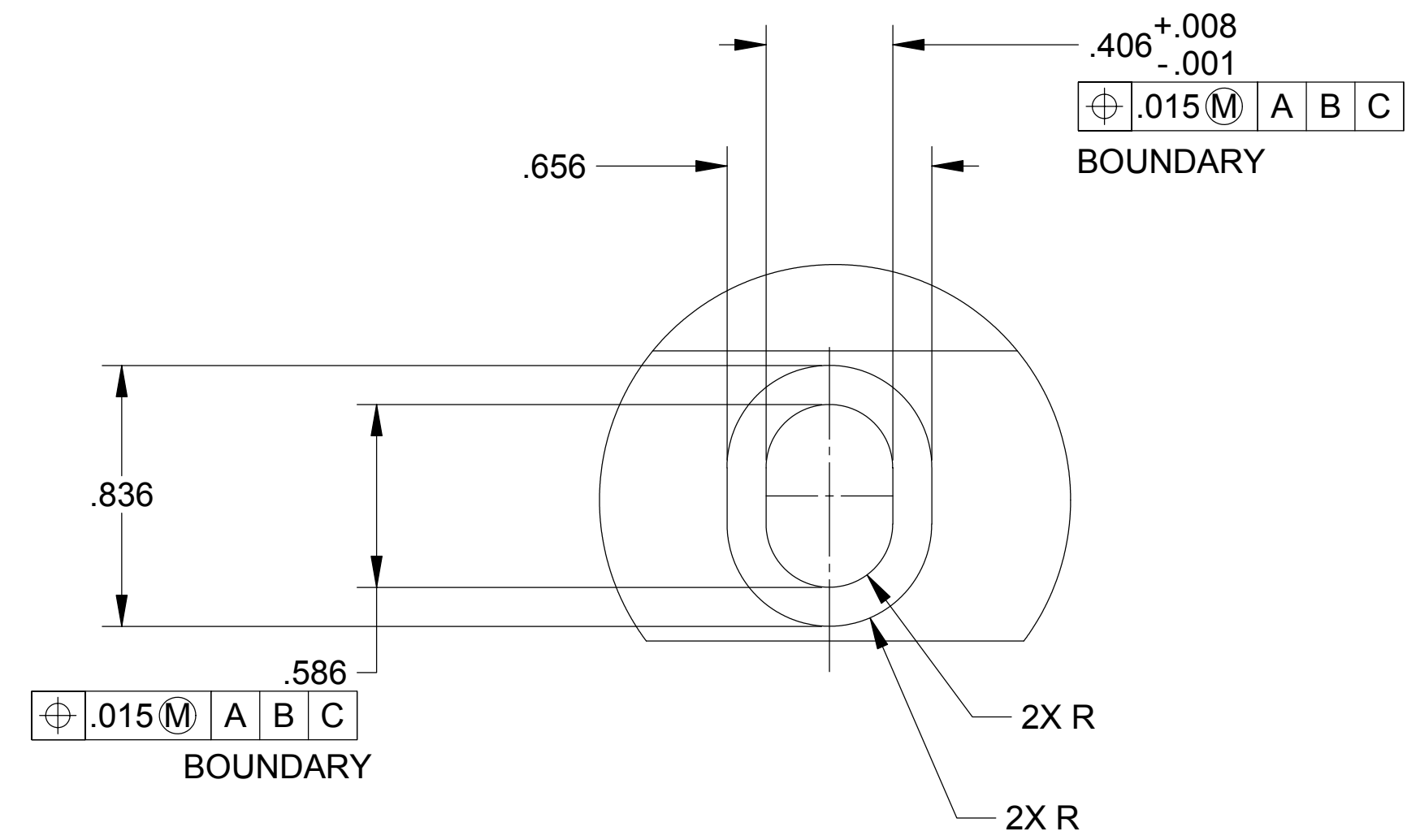


SECTION B-B
TYP 3 PLACES

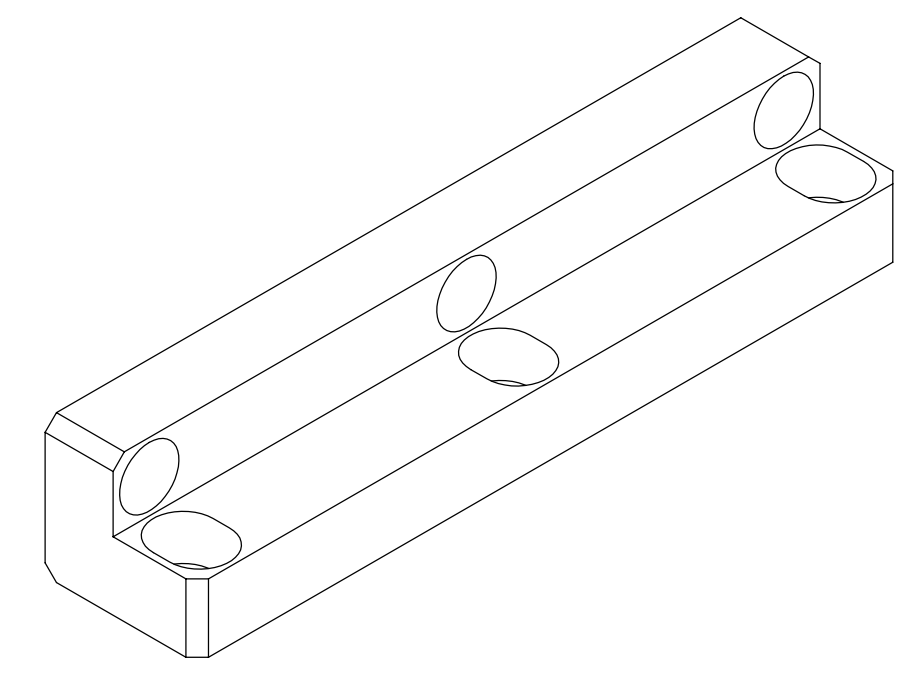


NOTES: UNLESS OTHERWISE SPECIFIED.

- ALL PARTS SHALL BE MANUFACTURED IN ACCORDANCE WITH ASI SPECIFICATION 20008225 (LIGO E048225).
- REMOVE ALL BURRS AND SHARP EDGES .005-.015.
- MACHINE FILLET RADII .003-.015.
- COUNTERSINK 82° ALL DRILLED HOLES .015-.030 DEEP BOTH SIDES.
- MARK PART AND SERIAL NUMBER IN LOCATION APPROXIMATELY SHOWN USING 0.13 INCH HIGH CHARACTERS IN ACCORDANCE WITH 20006686, TYPE I, CLASSES 4, 5, OR 6. SERIAL NUMBERS START AT 001 FOR FIRST PART AND THEN PROCEED CONSECUTIVELY. PARTS TOO SMALL TO MARK SHALL BE IDENTIFIED IN ACCORDANCE WITH 20006686, TYPE II.
- RECORD WEIGHT TO NEAREST 0.1 LB ON INSPECTION REPORT AFTER FINAL MACHINING. ESTIMATED WEIGHT IS 1.2 LBS.



DETAIL A
SCALE 2:1
TYP 3 PLACES



| QTY REQD | | ITEM NO | REF DES | CAGE NO | 20007865-1 | PART OR IDENTIFYING NO | NOMENCLATURE OR DESCRIPTION | SPECIFICATION | MATERIAL OR NOTE | ZONE |
|-------------|--|---|---------|--|------------|---|-----------------------------|---|------------------|------|
| PARTS LIST | | | | | | | | | | |
| CONTRACT NO | | UNLESS OTHERWISE SPECIFIED DIMENSIONS ARE IN INCHES | | TOLERANCES | | RELEASED 1/17/2005 <small>THIS DRAWING IS THE PROPERTY OF ASI AND NOT BE LOANED, REPRODUCED, COPIED, OR IN ANY MANNER DISSEMINATED WITHOUT THE WRITTEN PERMISSION OF ASI. CONTROL UNLESS A RED RELEASED STAMP APPEARS HERE.</small> | | ALLIANCE SPACESYSTEMS, INC. 1250 Lincoln Ave., Suite 100 Pasadena, CA 91103 | | REV |
| | | DECIMALS .XX ±.03 .XXX ±.010 ±.1/2" | | ANGLES ±1/2° | | DWN KEVIN J SPINK 07/07/04 | | ANGLE BRACKET, SHORT BAY BULKHEAD - STAGE 2 LIGO D047865-A | | A |
| | | MACHINE FINISH 125 | | DO NOT SCALE DRAWING INTERPRET DWG PER ASME Y14.5M | | PROJ ENGR STRS | | SIZE D CAGE CODE 1KNU9 | | REV |
| | | MATERIAL AL ALY 6061-T651 AMS QQ-A-250/11 | | 20007845 1388 | | CHK MATL | | 20007865 | | A |
| | | NEXT ASSEMBLY PROJECT CODE | | APPLICATION | | CONFIG PROJ | | SCALE 1:1 UNCLASSIFIED SHEET 1 OF 1 | | REV |
| | | | | | | ME QA | | | | REV |

THIS DOCUMENT MAY CONTAIN ITAR CONTROLLED INFORMATION AND/OR COMMERCE CONTROLLED INFORMATION EXPORT RESTRICTIONS MAY APPLY

FILE ATTACHMENTS
20007865.X_T