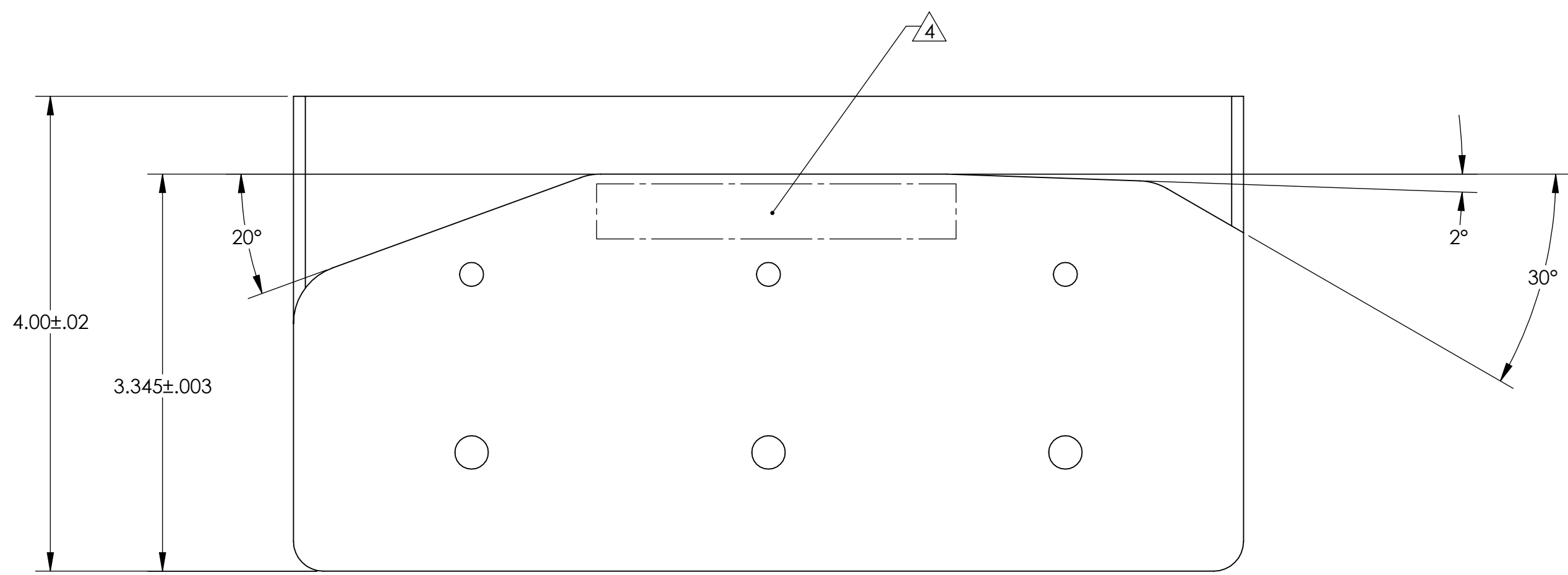
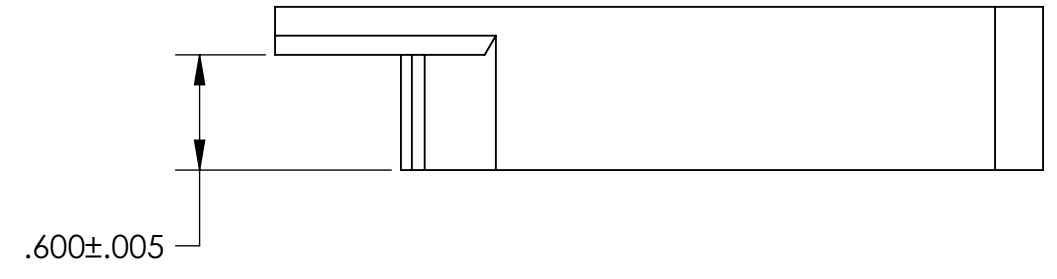
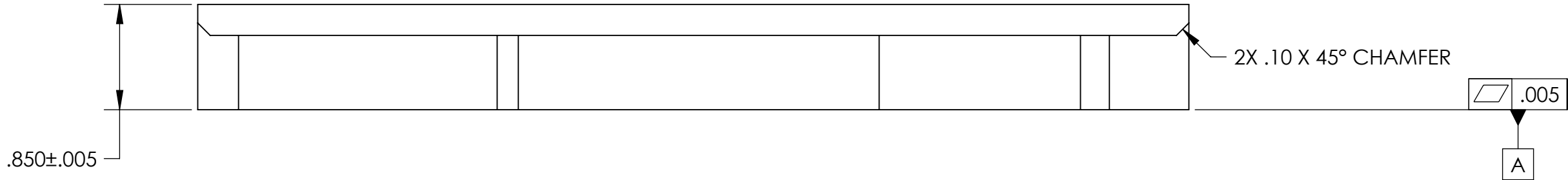
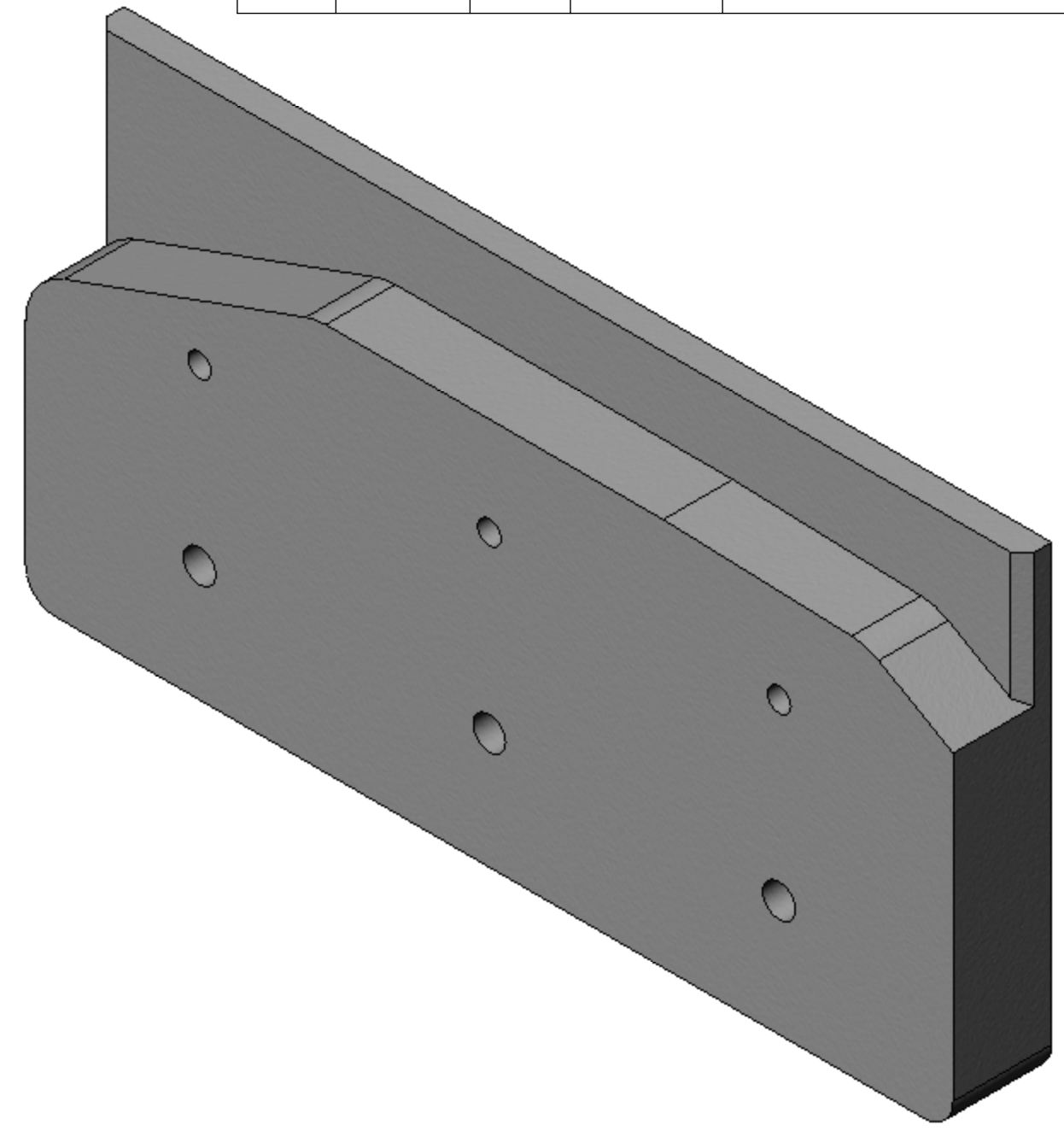
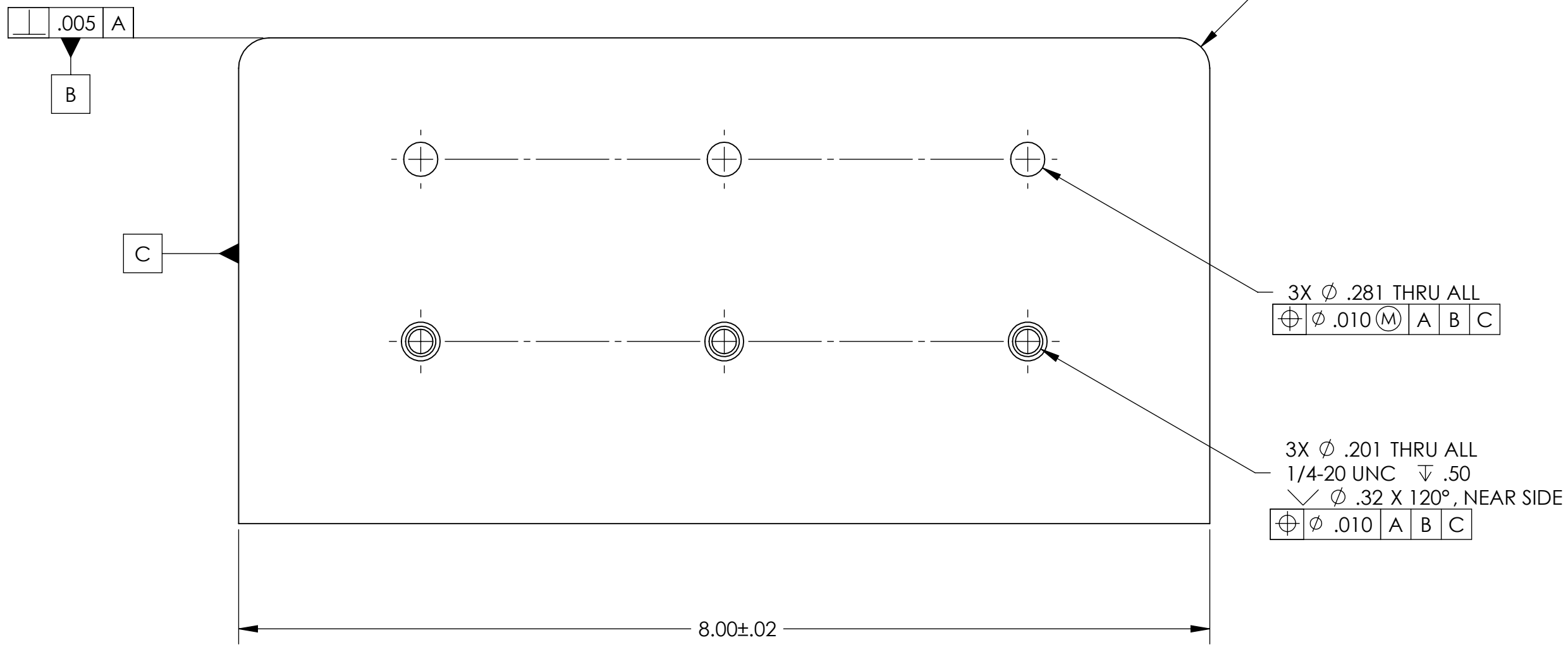


REVISION HISTORY				
REV	DATE	ECO	APPROVAL	DESCRIPTION
V1 / C	18 Jul 2007	1069	B. Schiffner	Release for Enhanced LIGO.
V2	21 Apr 2009		A. Stein	Release for Advanced LIGO. Added c'sinks.



MANUFACTURING NOTES:

- 1) MACHINE ALL SURFACES TO REMOVE OXIDES AND MILL FINISH. ABRASIVE REMOVAL TECHNIQUES (OTHER THAN DRESSED BLANCHARD GRINDING) ARE NOT ACCEPTABLE.
 - 2) ALL MACHINING FLUIDS MUST BE WATER SOLUBLE AND FREE OF SULFUR, CHLORINE, AND SILICONE, SUCH AS CINCINNATI MILACRON CIMTECH 410.
 - 3) THOROUGHLY CLEAN PART TO REMOVE ALL OIL, GREASE, DIRT, AND CHIPS.
 - 4) WHERE INDICATED, MECHANICALLY SCRIBE, STAMP, OR ENGRAVE THE FOLLOWING INFORMATION AS SHOWN BELOW: **PART NUMBER-REVISION** (AND **TYPE** IF INDICATED), FOLLOWED ON THE NEXT LINE WITH A UNIQUE 3-DIGIT **SERIAL NUMBER** STARTING AT 001 FOR THE FIRST PART AND INCREMENTING THEREAFTER. USE 0.38" TALL CHARACTERS UNLESS PART SIZE DICTATES SMALLER.
- D071311-V2
S/N - ###
- POST-MANUFACTURING NOTES:
- P1) CLEAN TO LIGO STANDARDS, CLASS B (PER E0900047 AND E960022).

APPROVALS		DATE	UNLESS OTHERWISE SPECIFIED: DIMENSIONS ARE IN INCHES DECIMAL TOLERANCES: .XX ±.015 .XXX ±.005 ANG TOL: ± 1° SURFACE ROUGHNESS: 63 REMOVE ALL SHARP EDGES. LEAVE .005 X 45° MIN CHAMFER, OR .005 MIN RADIUS. THIS PRINT & THE EMBEDDED CAD MODEL ARE THE DOCUMENTATION OF RECORD. UNLESS OTHERWISE SPECIFIED, ALL DIMENSIONS IN THE MODEL ARE BASIC, WITH TOLERANCES GIVEN BY: 	ORIGINAL DESIGN BY:	High Precision Devices 1468 Valtec Lane, Suite C, Boulder, Colorado 80301 Phone: (303) 447-2558 Fax: (303) 447-2548 Web Site: www.hpd-online.com	MODIFIED BY:	
ENGINEERING (HPD): D. Senders		6/1/2007		DESCRIPTION:		GS-13 Install, Left Rail	
QUALITY (HPD): C. Danaher		6/1/2007		P/N:	D071311	CONFIG:	-
MATERIAL:		PTFE		CAD FILE NAME: D071311_GS-13_Install-Left_Rail			
FINISH:		None	PROJECT: HAM ISI, Advanced LIGO				
MASS:		1.9 lbs	SIZE SCALE: 1:1		DRAWN BY: Dave Senders (HPD)		REV
			SHEET 1 OF 1		DATE PRINTED: 4/21/2009		V2