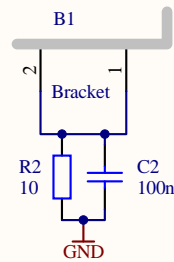
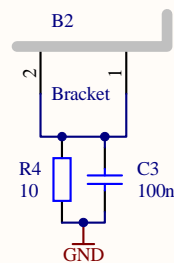




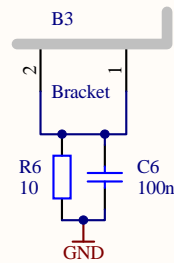
- H1 #4 screw, 3/8"
- H2 #4 screw, 3/8"
- H3 #4 lock washer
- H4 #4 lock washer
- H5 #4 nut
- H6 #4 nut



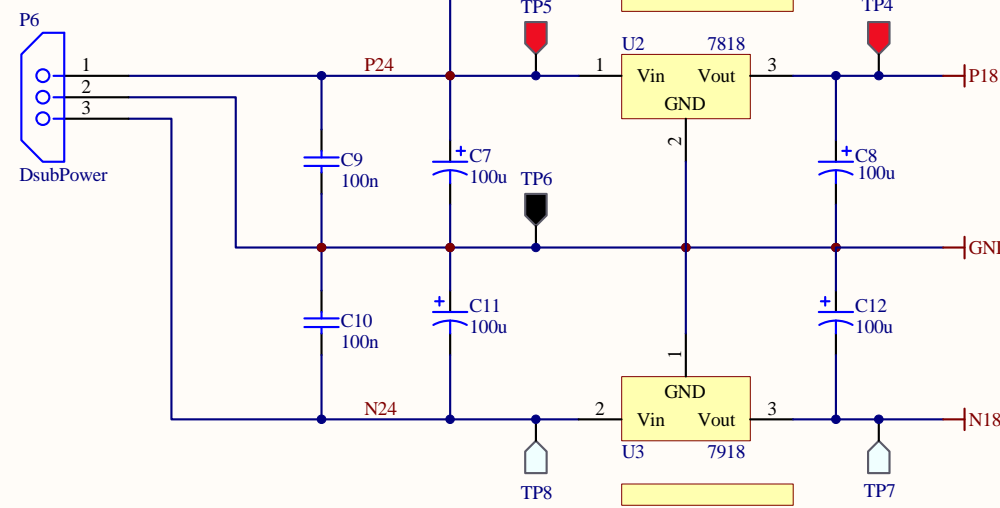
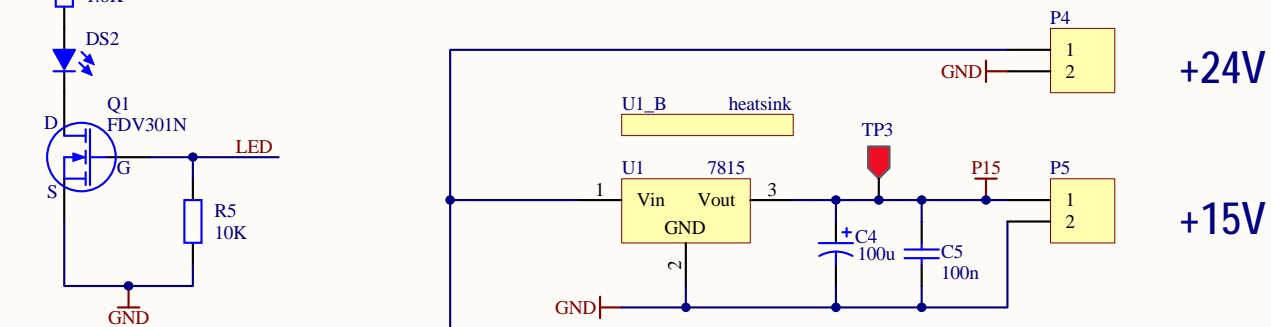
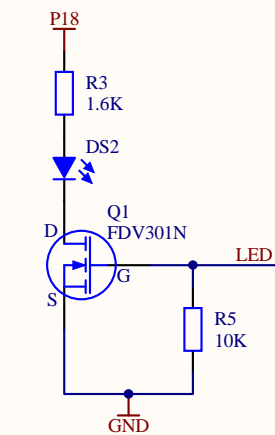
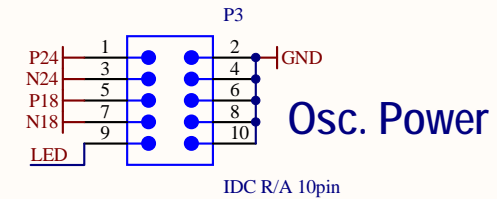
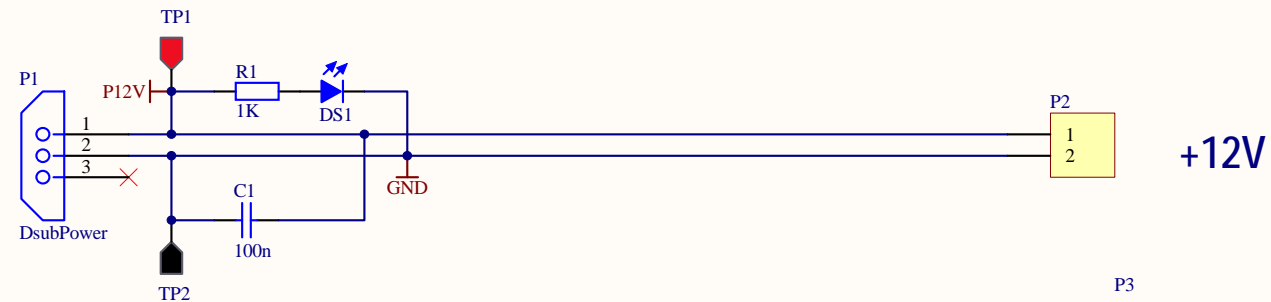
- H7 #4 screw, 3/8"
- H8 #4 screw, 3/8"
- H9 #4 lock washer
- H10 #4 lock washer
- H11 #4 nut
- H12 #4 nut



- H13 #4 screw, 3/8"
- H14 #4 screw, 3/8"
- H15 #4 lock washer
- H16 #4 lock washer
- H17 #4 nut
- H18 #4 nut



- H21 #4 screw, 3/8"
- H22 #4 screw, 3/8"
- H23 #4 screw, 3/8"
- H24 #4 lock washer
- H25 #4 lock washer
- H26 #4 lock washer
- H27 #4 nut
- H28 #4 nut
- H29 #4 nut



|                               |                                   |                       |
|-------------------------------|-----------------------------------|-----------------------|
| Title                         |                                   |                       |
| <b>RF Source: Power Board</b> |                                   |                       |
| Size                          | Number                            | Revision              |
| B                             | <b>D080708</b>                    | <b>B</b>              |
| Date:                         | 4/13/2009                         | Sheet 1 of 1          |
| File:                         | C:\User\...\RFSourcePower1.SchDoc | Drawn By: Daniel Sigg |