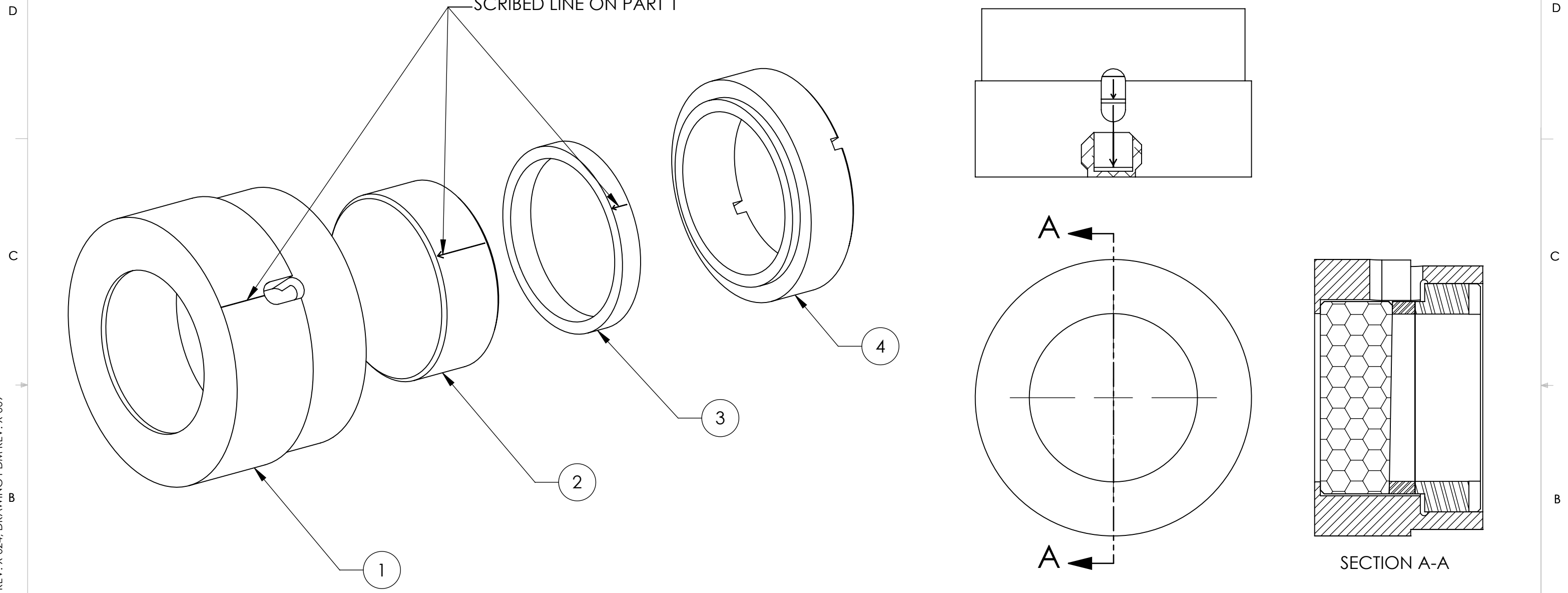


NOTES CONTINUED:

REV.	DATE	DCN #	DRAWING TREE #
v1	6 JUN 2012	E1000563	-
v3	21 SEP 2012	E1000563	-
-	-	-	-

THE SCRIBE ON PART 1 SHOULD BE ALIGNED WITH THE ARROW ON PART 2. THE ARROW ON PART 3 SHOULD BE ALIGNED WITH THE ARROW ON PART 2
 NOTE: THICK SIDE OF WEDGED PRISM ALIGNS WITH SCRIBED LINE ON PART 1



4	D1200841	OFI_WEDGED PRISM NUT	6061-T6 Al	1	1
3	D1200842	OFI_WEDGED PRISM SPACER	6061-T6 Al	1	1
2	D1200434	OFI_WEDGE PRISM, 1.0 INCH	FUSED SILICA	1	1
1	D0900357	WEDGED PRISM HOLDER	304 SSTL	1	1
ITEM NO.	PART NUMBER	DESCRIPTION	MATERIAL	REQ	TOTAL

PARTS LIST

NOTES AND TOLERANCES: (UNLESS OTHERWISE SPECIFIED)

DIMENSIONS ARE IN INCHES
 TOLERANCES:
 .XX ± .01
 .XXX ± .005
 ANGULAR ± 1.0°

MATERIAL	N/A	FINISH	N/A μinch	SYSTEM	ADVANCED LIGO	SUB-SYSTEM	AOS	PART NAME	WEDGED PRISM ASSY			
NEXT ASSY	D1200197		DESIGNER	N. NGUYEN	9 MAR 2009	SIZE	DWG. NO.	B		D0900359	REV.	v3
APPROVAL	M. SMITH	CHECKER	L. AUSTIN	DRAFTER	TQ. NGUYEN	6 JUN 2012	SCALE	2:1	PROJECTION	SHEET 1 OF 1		

D0900359_AdlIGO_AOS_Wedged Prism Assy, PART PDM REV: X-024, DRAWING PDM REV: X-009