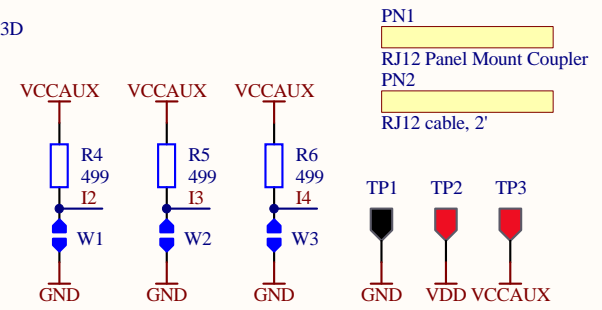
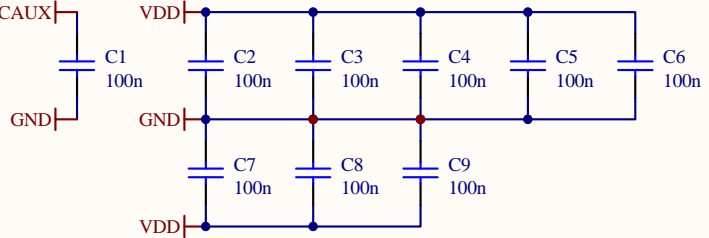
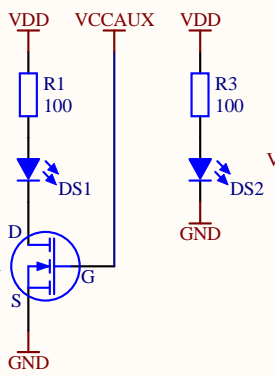
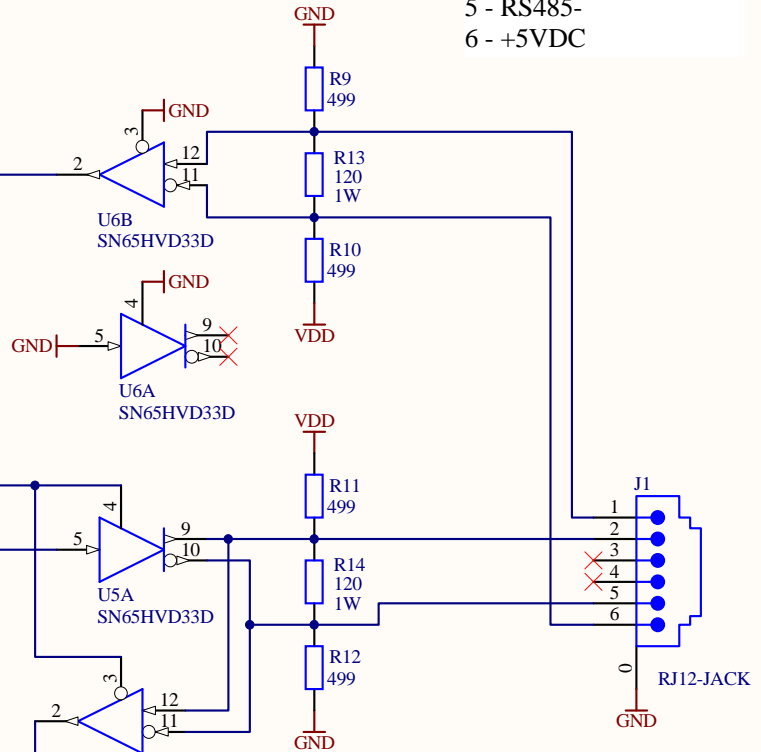
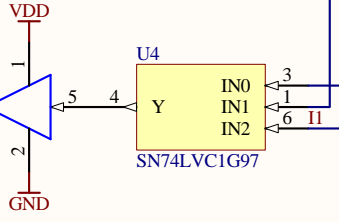
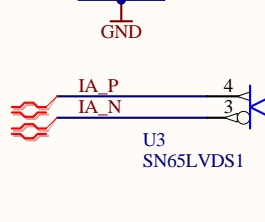
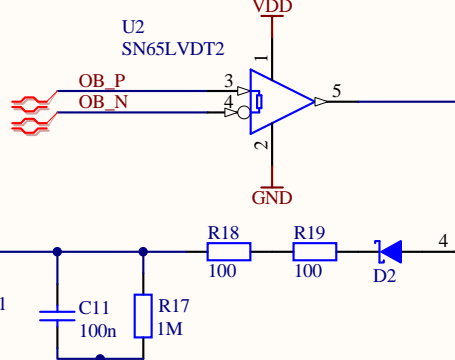
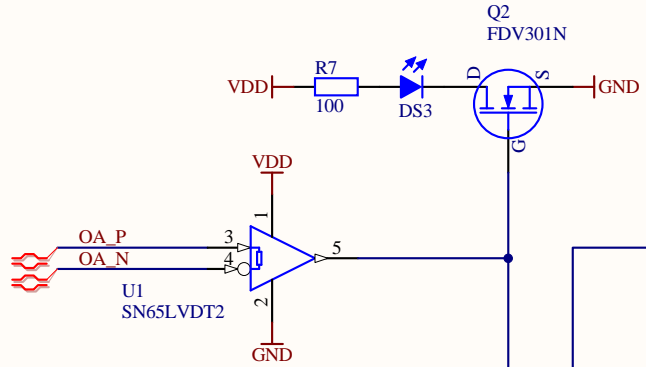
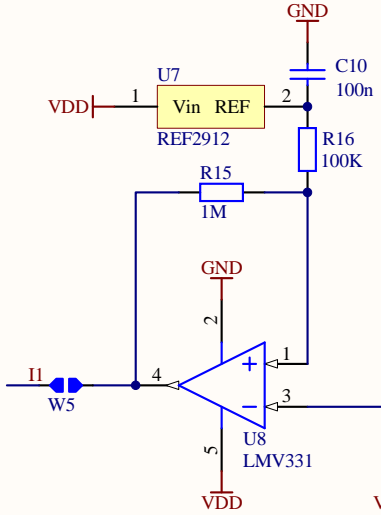
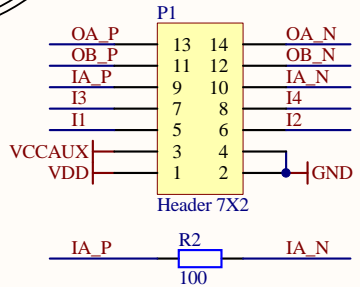


Jumper W4 for RS422
or W5 for automatic

Pin-out ALD118:
1 - GND
2 - RS485+
3 - TXD
4 - RXD
5 - RS485-
6 - +5VDC



Title		
Master/Fanout: RS485 Expansion Module		
Size	Number	Revision
A	D0900418	A
Date:	3/12/2009	Sheet 1 of 1
File:	C:\User\d...MasterFanOutExpansionRS485... By: Daniel Sigg	