

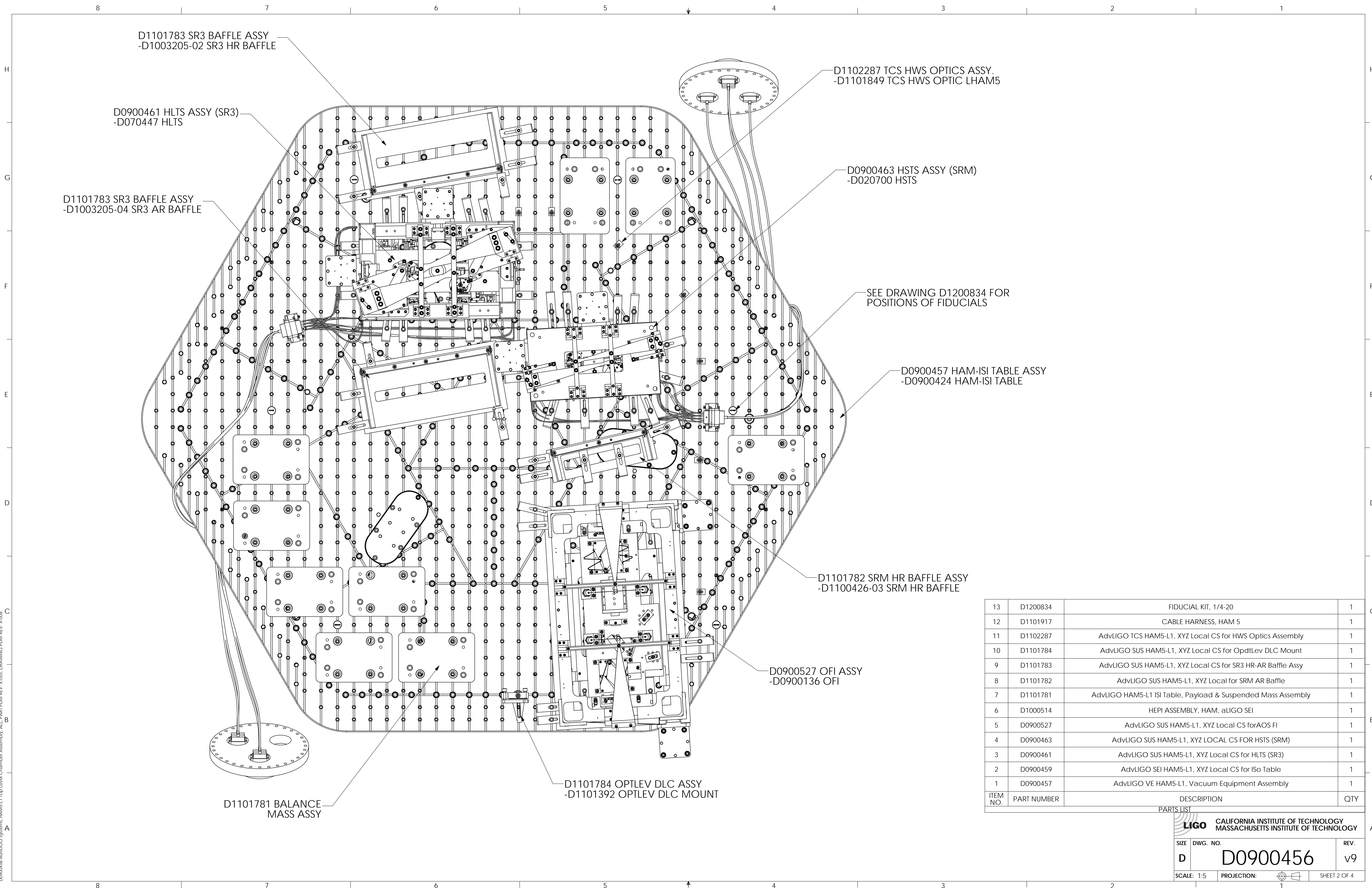
HAM5-L1 GLOBAL COORDINATES (mm)	
X	0
Y	-20122.0
Z	0

NOTES AND TOLERANCES: (UNLESS OTHERWISE SPECIFIED)

MATERIAL	--	FINISH	-- μ inch
----------	----	--------	---------------

CALIFORNIA INSTITUTE OF TECHNOLOGY MASSACHUSETTS INSTITUTE OF TECHNOLOGY		PART NAME	
SYSTEM ADVANCED LIGO		SUB-SYSTEM SUS	
NEXT ASSY		DESIGNER	ED CHAVEZ
		DRAFTER	ED CHAVEZ
		CHECKER	C. TORRIE
		APPROVAL	SEE DCC
		DATE	27 JUL 2009
		DATE	15 NOV 2011
		DATE	SEE DCC
SIZE	D	DWG. NO.	D0900456
REV.	v9	SCALE: 1:16	PROJECTION:
			SHEET 1 OF 4

D0900456-ADM-LIGO Systems: HAM5-L1 Top Level Chamber Assembly: ALL PART PDM REV. X-055: DRAWING PDM REV. X-008



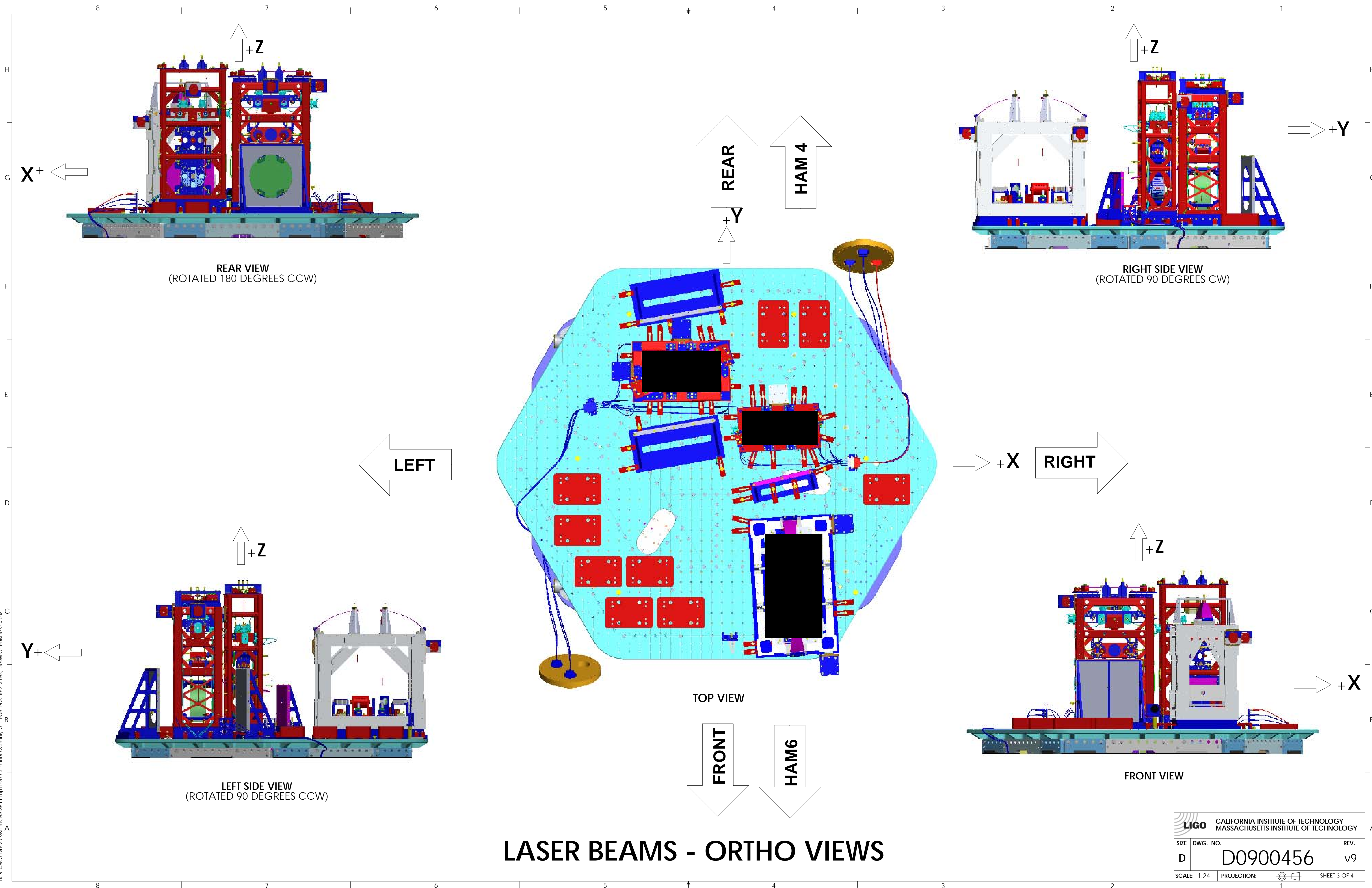
ITEM NO.	PART NUMBER	DESCRIPTION	QTY
13	D1200834	FIDUCIAL KIT, 1/4-20	1
12	D1101917	CABLE HARNESS, HAM 5	1
11	D1102287	AdvLIGO TCS HAM5-L1, XYZ Local CS for HWS Optics Assembly	1
10	D1101784	AdvLIGO SUS HAM5-L1, XYZ Local CS for OpdtLev DLC Mount	1
9	D1101783	AdvLIGO SUS HAM5-L1, XYZ Local CS for SR3 HR-AR Baffle Assy	1
8	D1101782	AdvLIGO SUS HAM5-L1, XYZ Local for SRM AR Baffle	1
7	D1101781	AdvLIGO HAM5-L1 ISI Table, Payload & Suspended Mass Assembly	1
6	D1000514	HEPI ASSEMBLY, HAM, aLIGO SEI	1
5	D0900527	AdvLIGO SUS HAM5-L1, XYZ Local CS for AOS FI	1
4	D0900463	AdvLIGO SUS HAM5-L1, XYZ LOCAL CS FOR HSTS (SRM)	1
3	D0900461	AdvLIGO SUS HAM5-L1, XYZ Local CS for HLTS (SR3)	1
2	D0900459	AdvLIGO SEI HAM5-L1, XYZ Local CS for ISo Table	1
1	D0900457	AdvLIGO VE HAM5-L1, Vacuum Equipment Assembly	1

LIGO CALIFORNIA INSTITUTE OF TECHNOLOGY
 MASSACHUSETTS INSTITUTE OF TECHNOLOGY

SIZE DWG. NO. REV.
 D D0900456 v9

SCALE: 1:5 PROJECTION: SHEET 2 OF 4

D0900456-AdvLIGO Systems: HAM5-L1 Top Level Chamber Assembly, ALL PART PDM REV. X-055, DRAWING PDM REV. X-008



REAR VIEW
(ROTATED 180 DEGREES CCW)

RIGHT SIDE VIEW
(ROTATED 90 DEGREES CW)

LEFT SIDE VIEW
(ROTATED 90 DEGREES CCW)

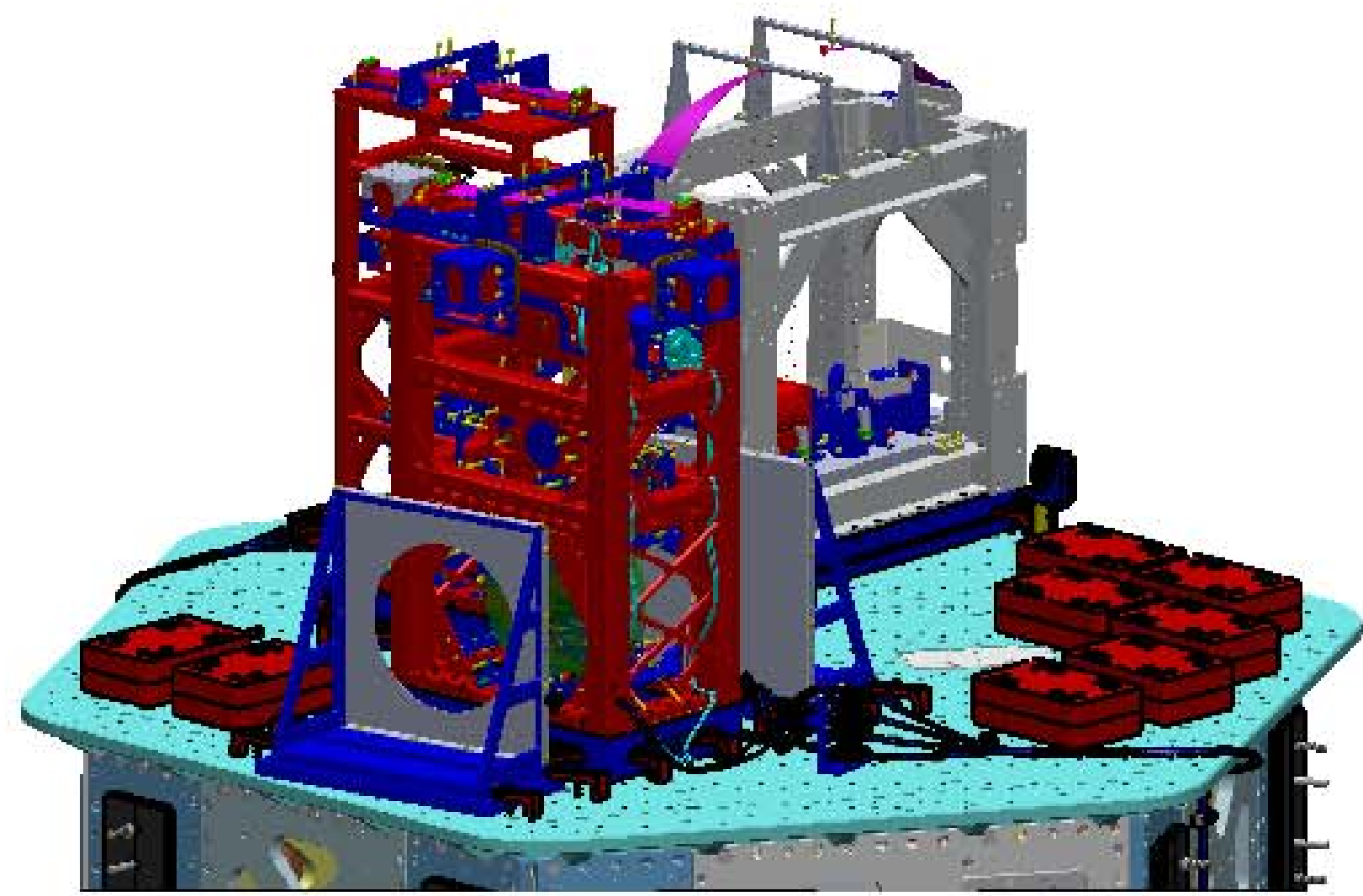
FRONT VIEW

TOP VIEW

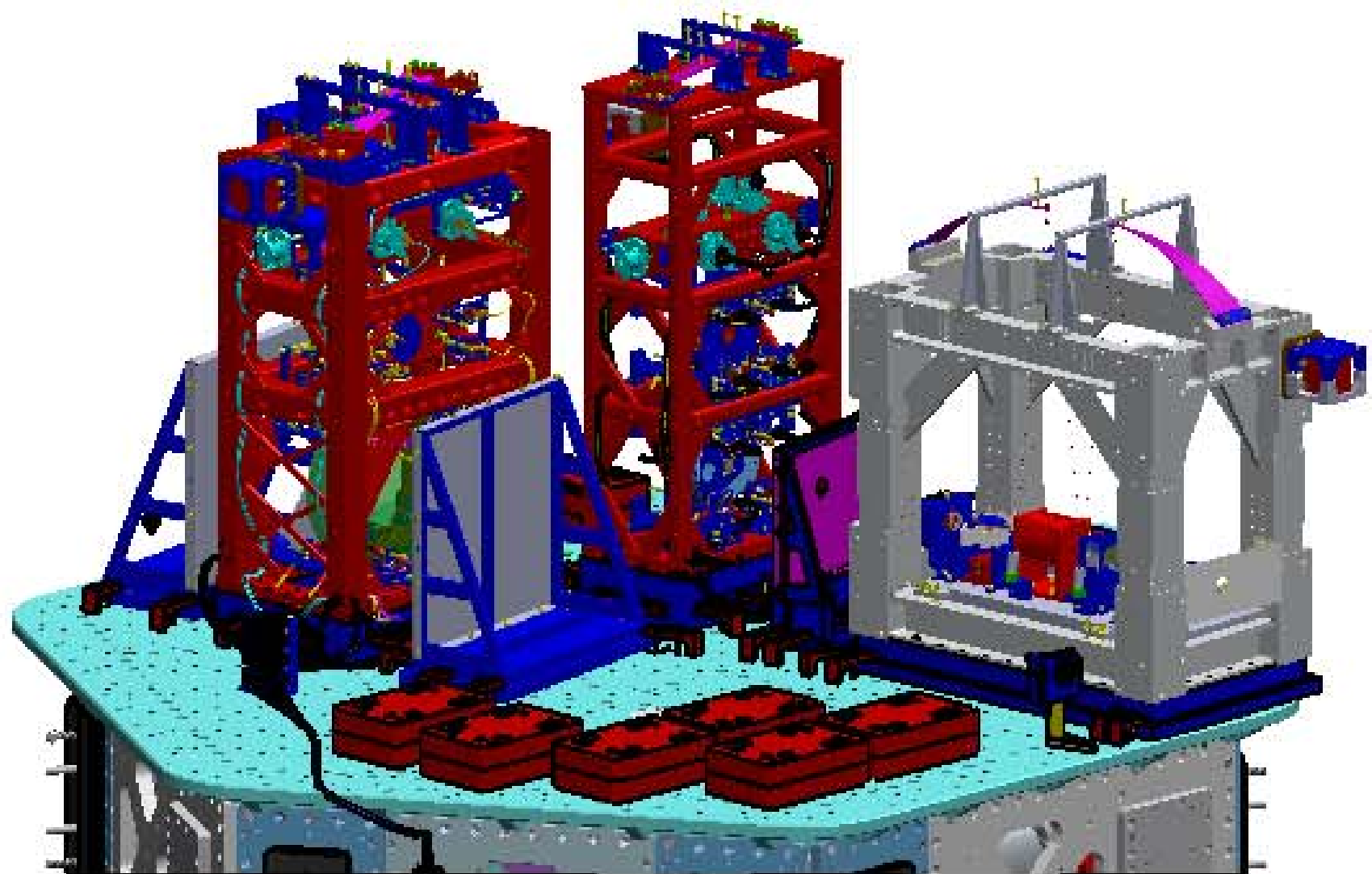
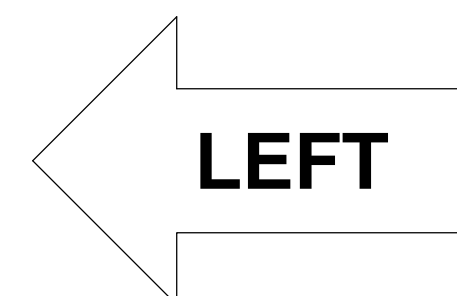
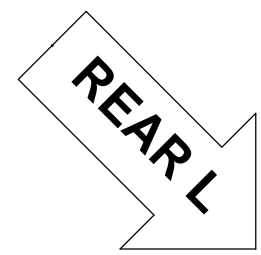
LASER BEAMS - ORTHO VIEWS

LIGO CALIFORNIA INSTITUTE OF TECHNOLOGY MASSACHUSETTS INSTITUTE OF TECHNOLOGY	
SIZE DWG. NO.	REV.
D D0900456	v9
SCALE: 1:24	PROJECTION:
SHEET 3 OF 4	

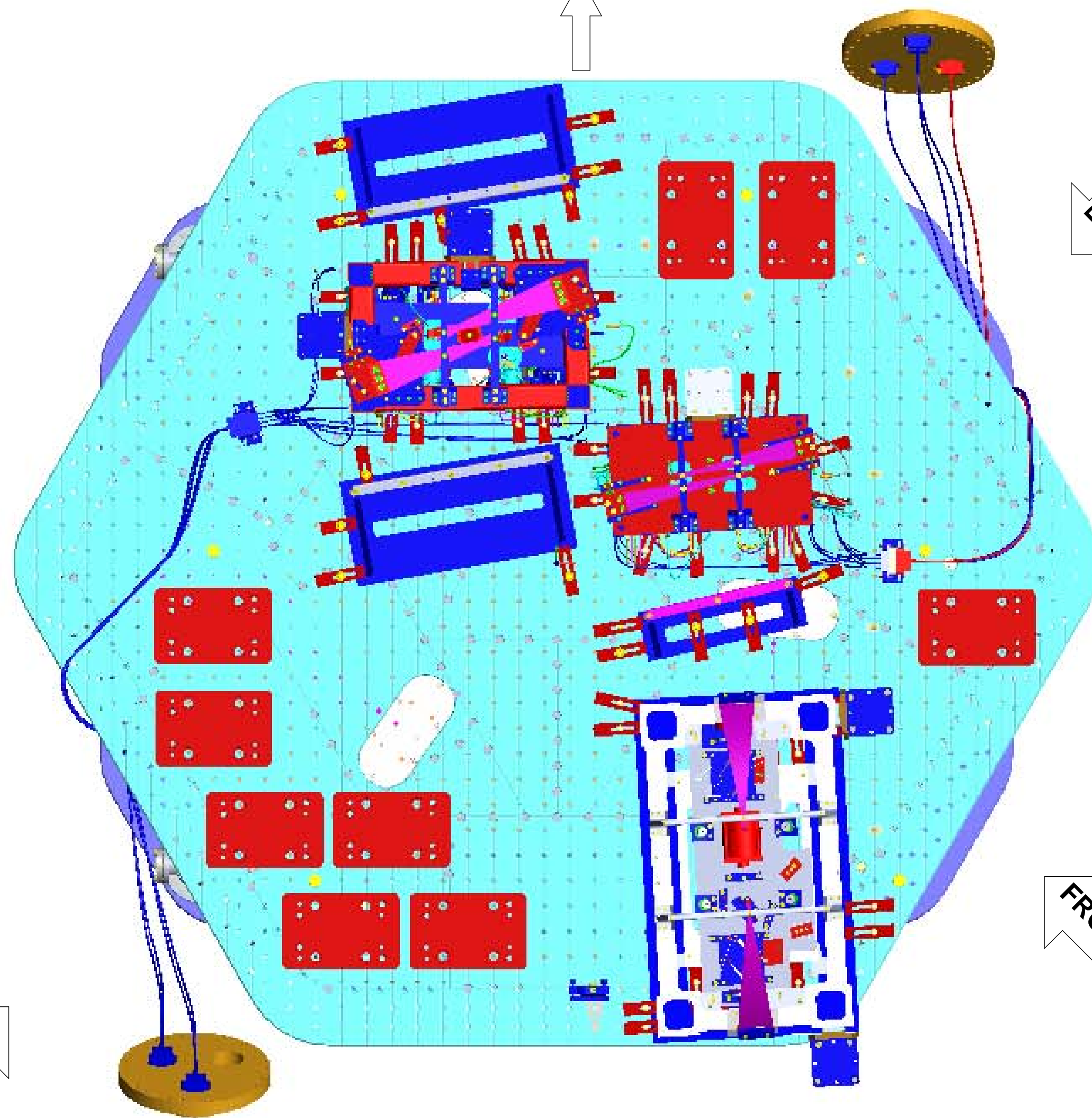
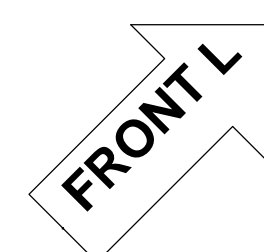
D0900456-ADM-LIGO Systems: HAM6-L1 Top Level Chamber Assembly: ALL PART PDM REV: X-055: DRAWING PDM REV: X-008



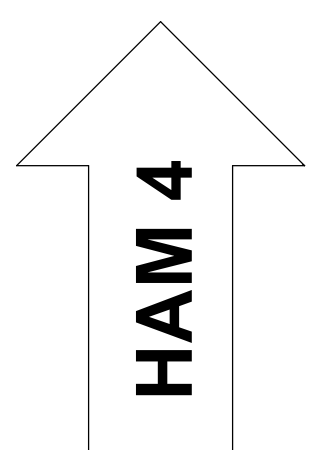
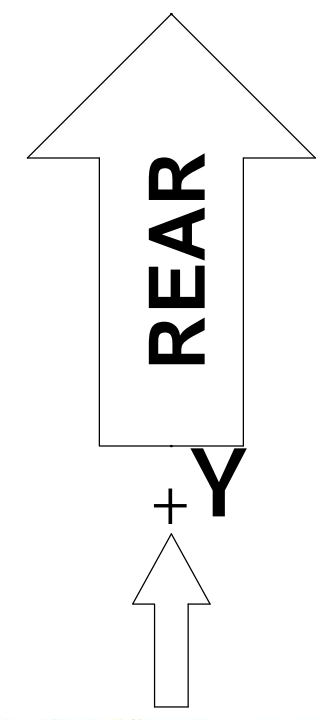
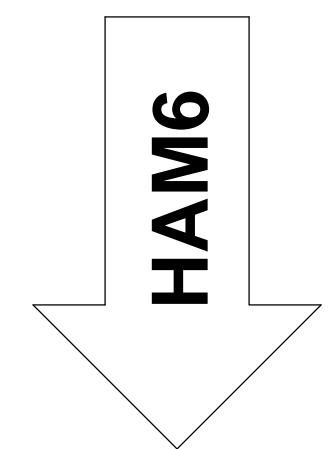
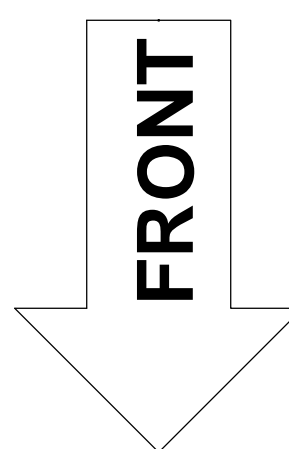
ISO REAR - LEFT



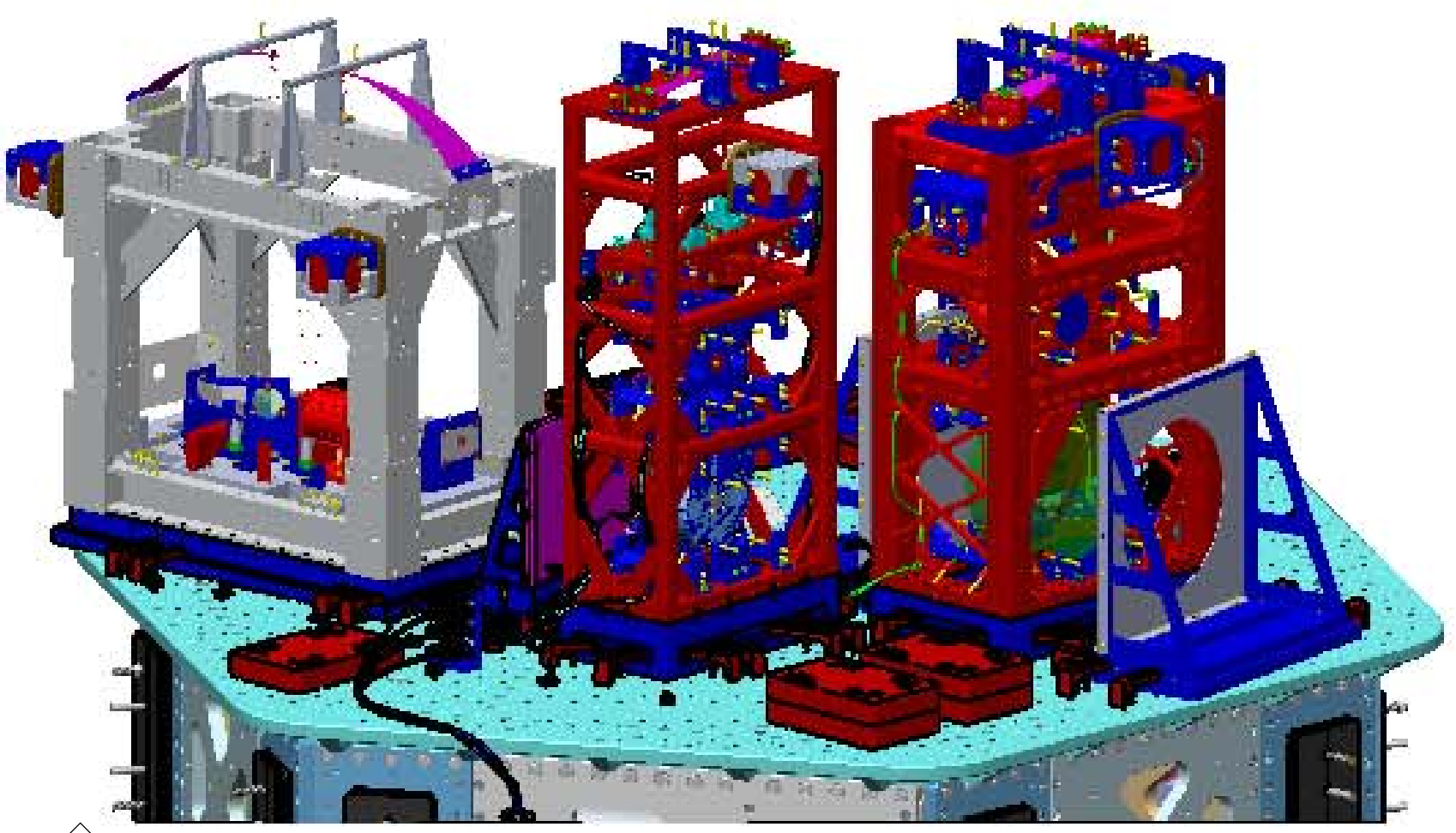
ISO FRONT - LEFT



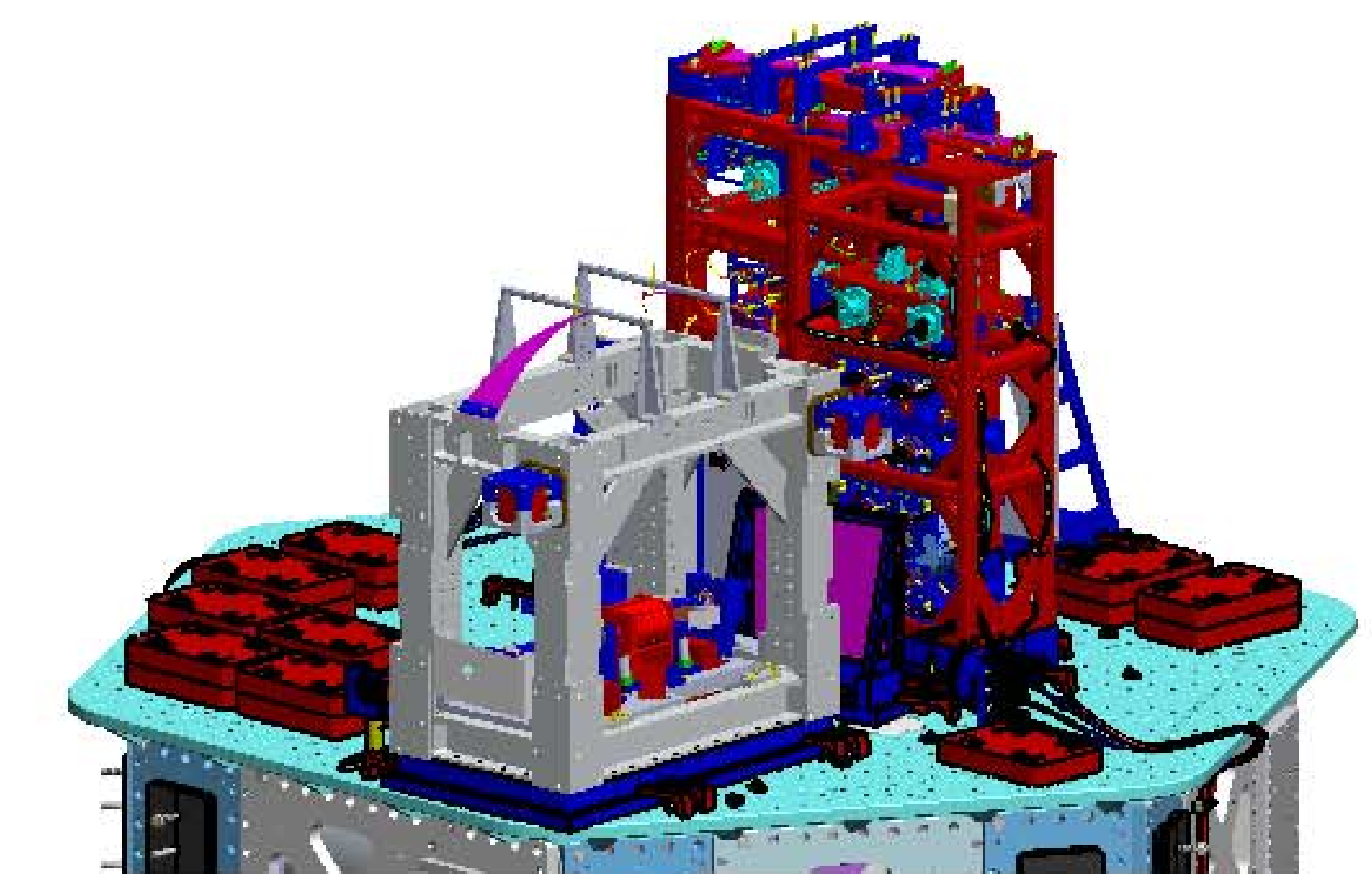
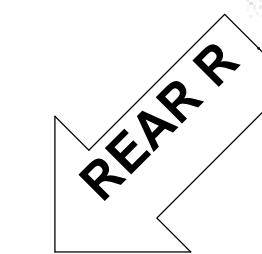
TOP VIEW



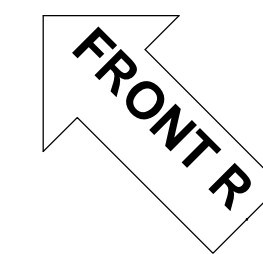
+Y



ISO REAR - RIGHT



ISO FRONT - RIGHT



LASER BEAMS - ISO VIEWS

LIGO CALIFORNIA INSTITUTE OF TECHNOLOGY MASSACHUSETTS INSTITUTE OF TECHNOLOGY		
SIZE	DWG. NO.	REV.
D	D0900456	v9
SCALE: 1:24	PROJECTION:	SHEET 4 OF 4

D0900456-ADM-LIGO Systems: HAM5-L1 Top Level Chamber Assembly: ALL PART PDM REV: X-055: DRAWING PDM REV: X-008