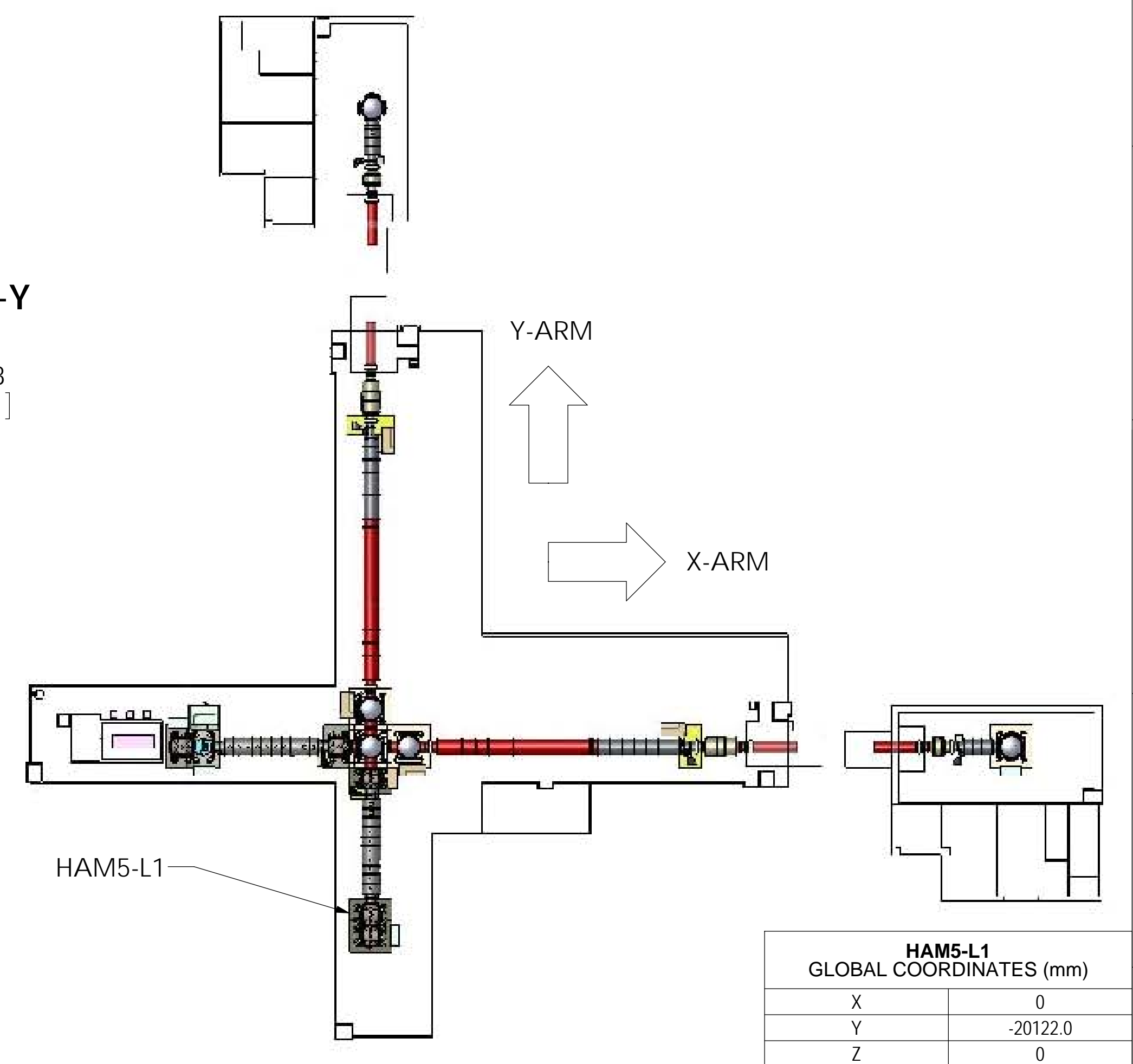
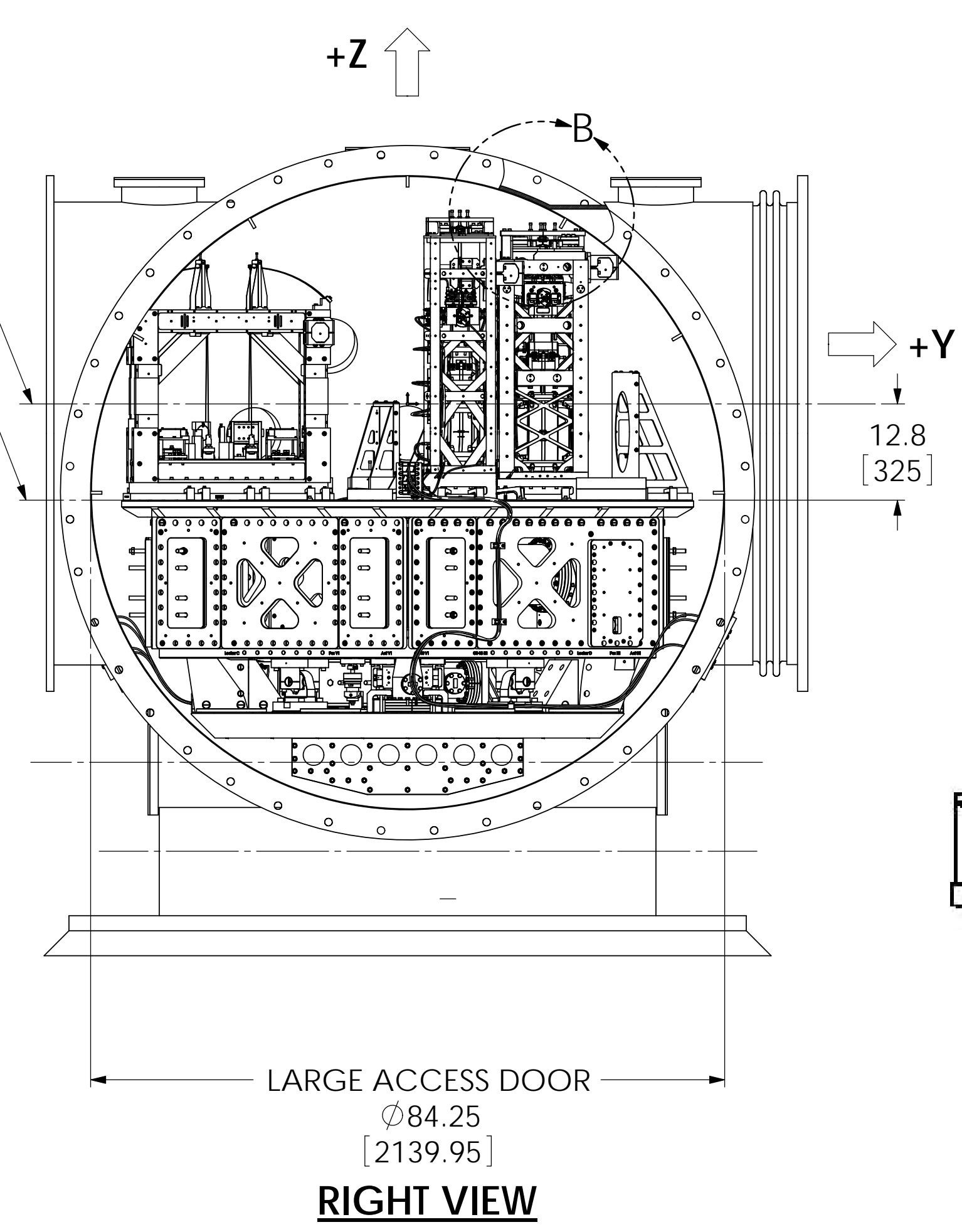
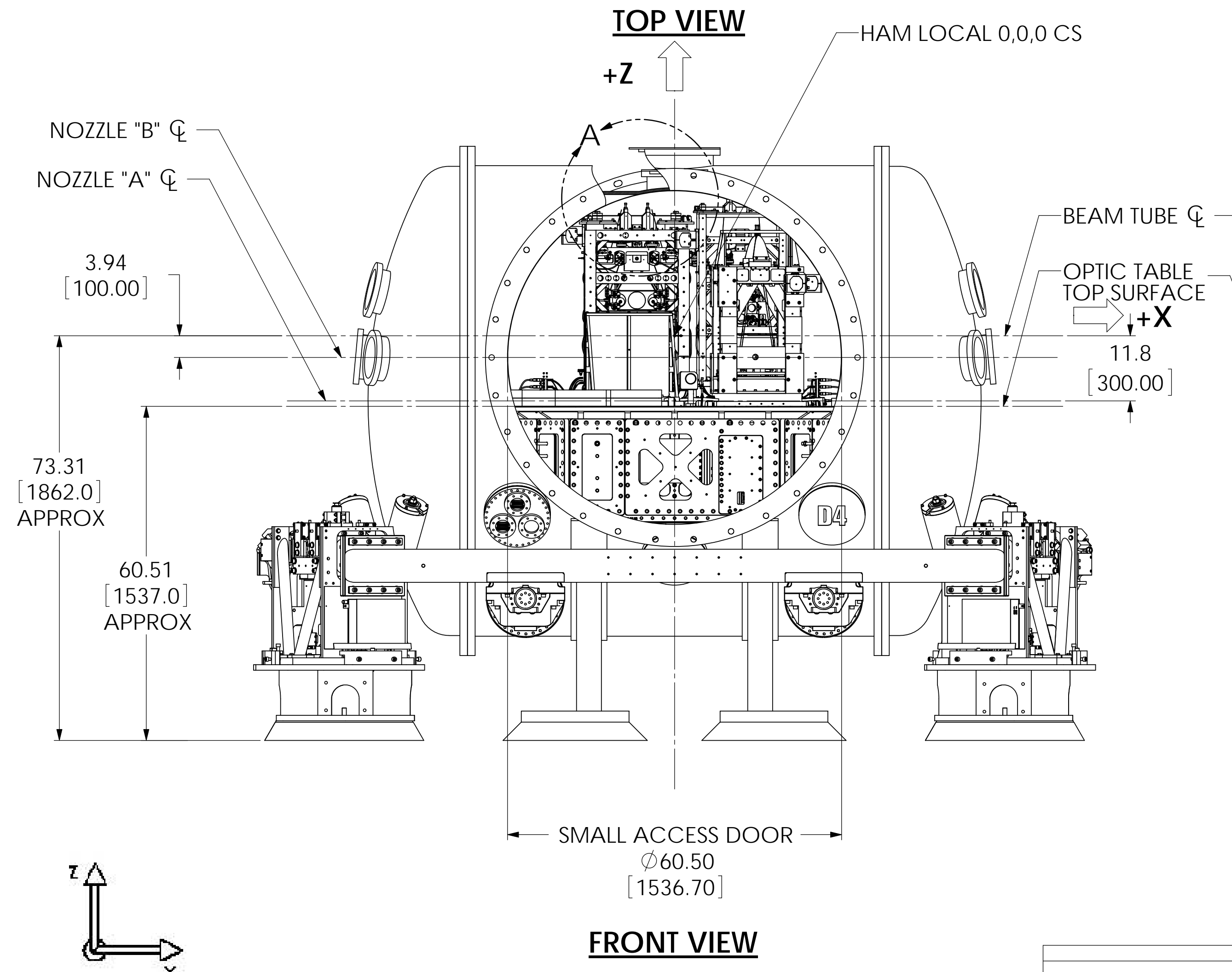
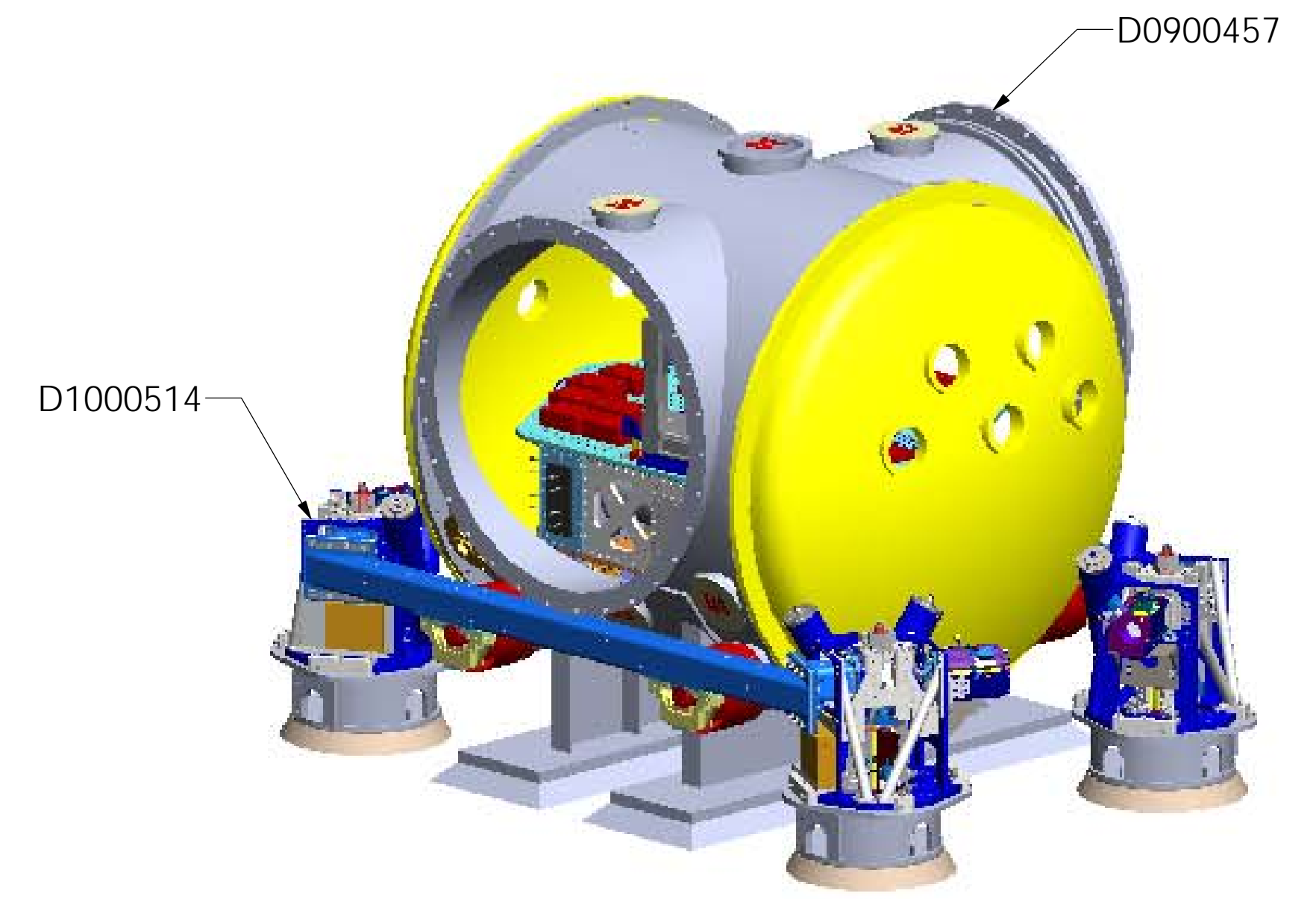
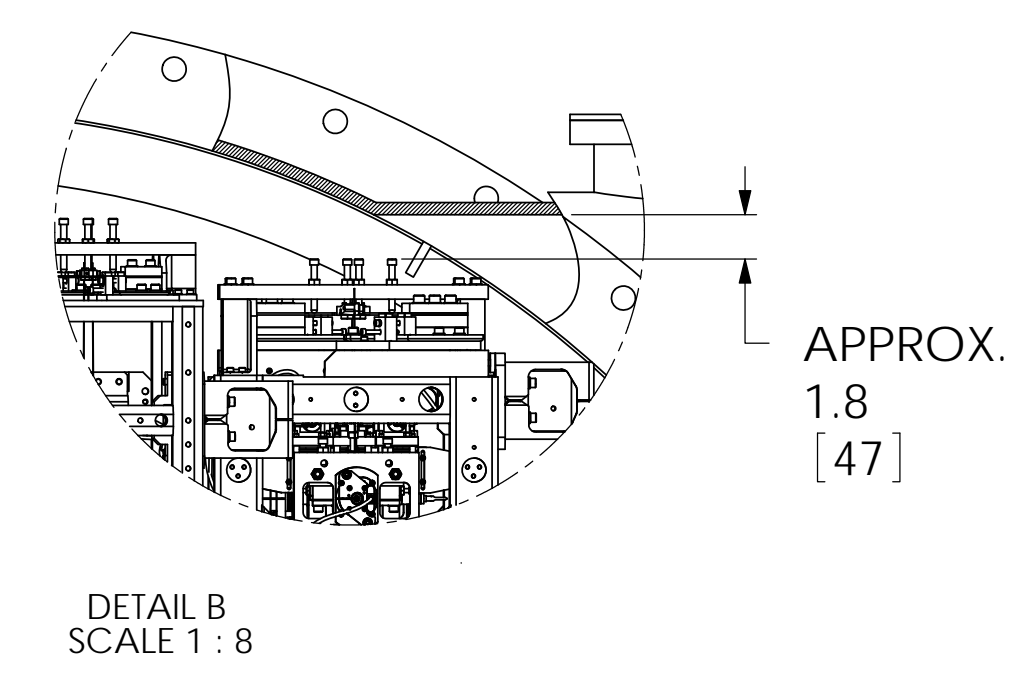
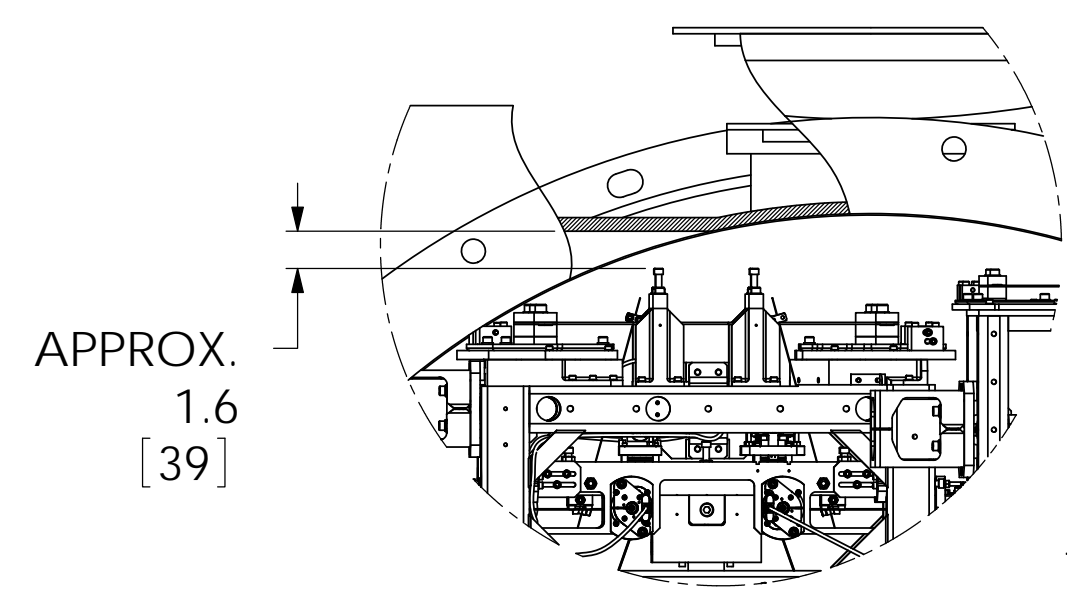
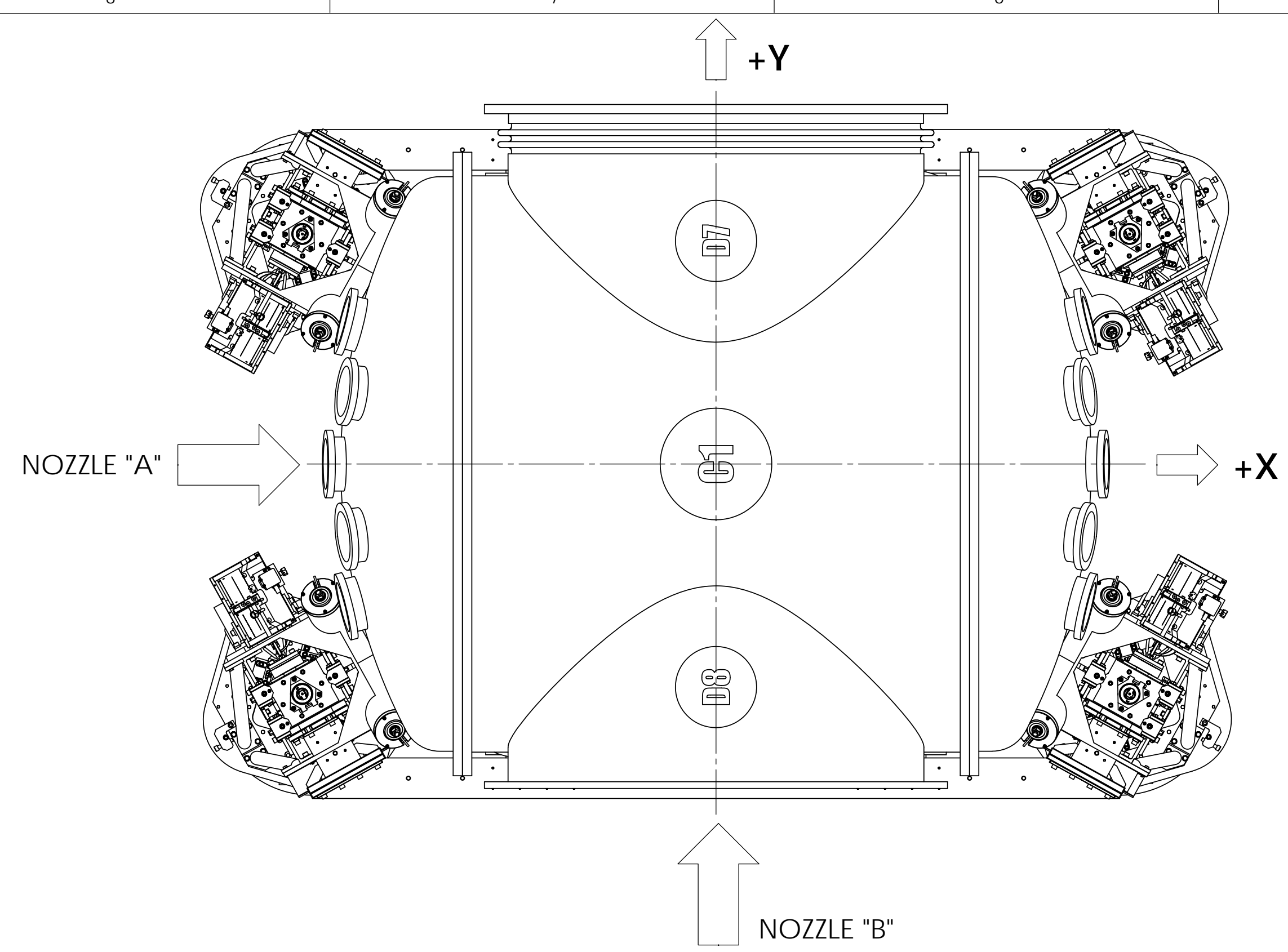


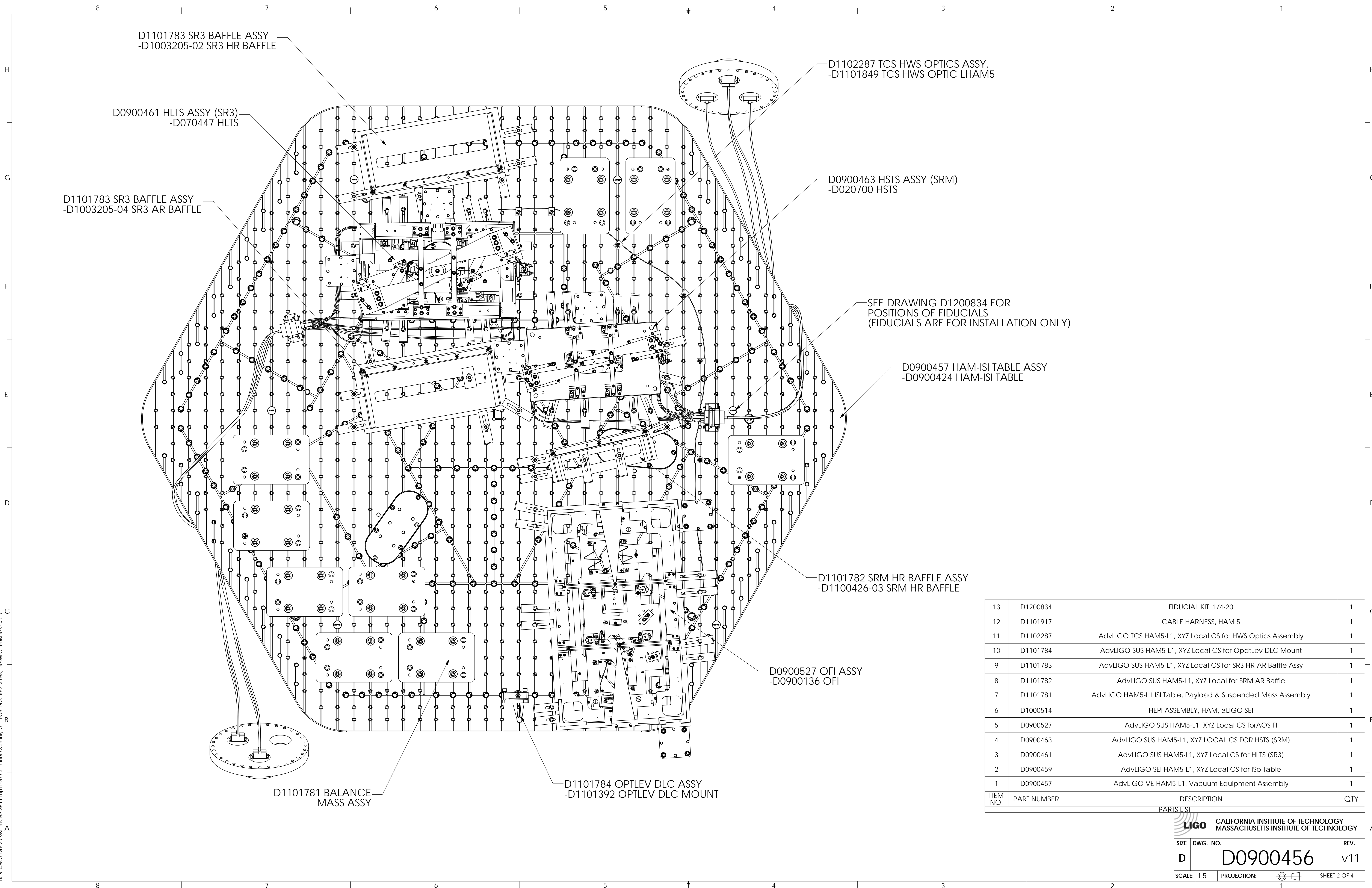
REV.	DATE	DCN #	DRAWING TREE #
v9	09 AUG 2012		
v10	18 DEC 2012		
v11	02 APR 2013		



NOTES AND TOLERANCES: (UNLESS OTHERWISE SPECIFIED)

CALIFORNIA INSTITUTE OF TECHNOLOGY MASSACHUSETTS INSTITUTE OF TECHNOLOGY		PART NAME	
ADVANCED LIGO		HAM5-L1 TOP LEVEL CHAMBER ASSEMBLY, FULLY FINISHED	
DESIGNER	ED CHAVEZ	27 JUL 2009	SIZE DWG. NO.
DRAFTER	C. TORRIE	15 NOV 2011	D
CHECKER	SEE DCC	SEE DCC	SCALE: 1:16
APPROVAL	SEE DCC	SEE DCC	PROJECTION:
MATERIAL	--	FINISH	-- μ inch
		NEXT ASSY	
		REV. v11	
		SHEET 1 OF 4	

D0900456-ADM-LIGO Systems: HAM5-L1 Top Level Chamber Assembly, ALL PART PDM REV. X-056, DRAWING PDM REV. X-010



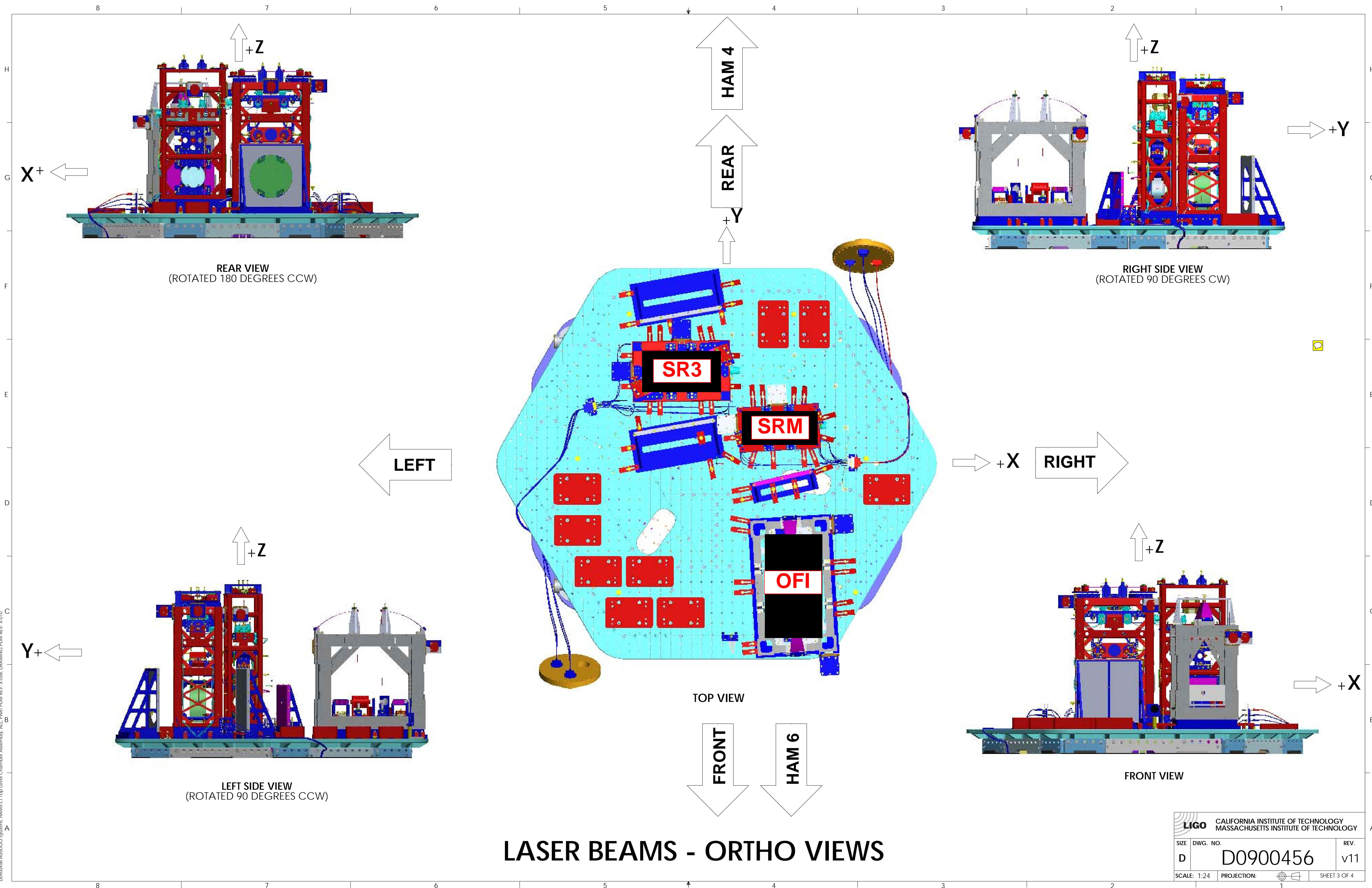
ITEM NO.	PART NUMBER	DESCRIPTION	QTY
13	D1200834	FIDUCIAL KIT, 1/4-20	1
12	D1101917	CABLE HARNESS, HAM 5	1
11	D1102287	AdvLIGO TCS HAM5-L1, XYZ Local CS for HWS Optics Assembly	1
10	D1101784	AdvLIGO SUS HAM5-L1, XYZ Local CS for OpdtLev DLC Mount	1
9	D1101783	AdvLIGO SUS HAM5-L1, XYZ Local CS for SR3 HR-AR Baffle Assy	1
8	D1101782	AdvLIGO SUS HAM5-L1, XYZ Local for SRM AR Baffle	1
7	D1101781	AdvLIGO HAM5-L1 ISI Table, Payload & Suspended Mass Assembly	1
6	D1000514	HEPI ASSEMBLY, HAM, aLIGO SEI	1
5	D0900527	AdvLIGO SUS HAM5-L1, XYZ Local CS for AOS FI	1
4	D0900463	AdvLIGO SUS HAM5-L1, XYZ LOCAL CS FOR HSTS (SRM)	1
3	D0900461	AdvLIGO SUS HAM5-L1, XYZ Local CS for HLTS (SR3)	1
2	D0900459	AdvLIGO SEI HAM5-L1, XYZ Local CS for ISo Table	1
1	D0900457	AdvLIGO VE HAM5-L1, Vacuum Equipment Assembly	1

LIGO CALIFORNIA INSTITUTE OF TECHNOLOGY
MASSACHUSETTS INSTITUTE OF TECHNOLOGY

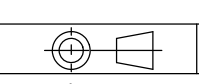
SIZE DWG. NO. REV.
D D0900456 v11

SCALE: 1:5 PROJECTION: SHEET 2 OF 4

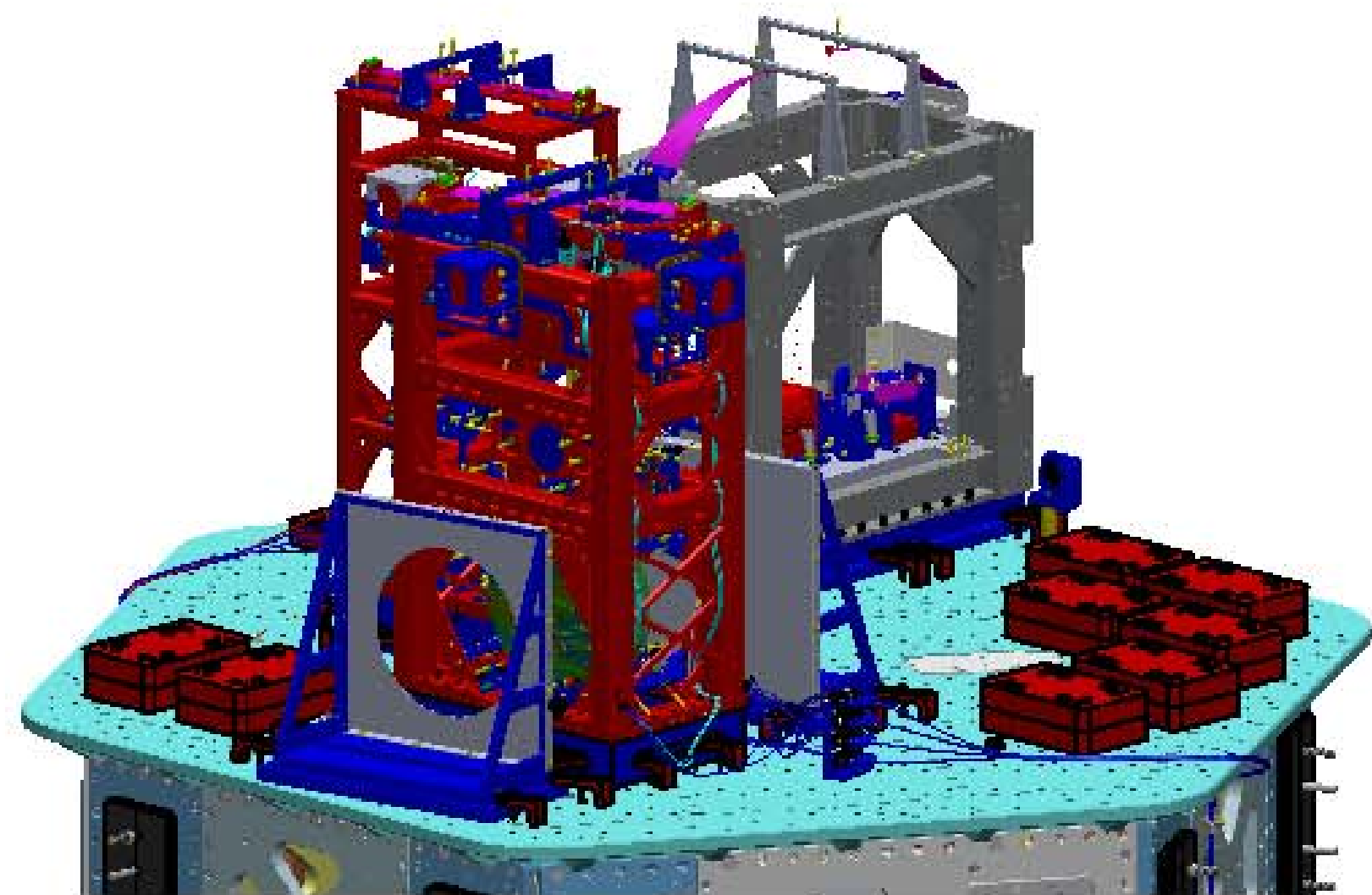
D0900456 AdvLIGO Systems: HAM5-L1 Top Level Chamber Assembly, ALL PART PDM REV. X-056, DRAWING PDM REV. X-010



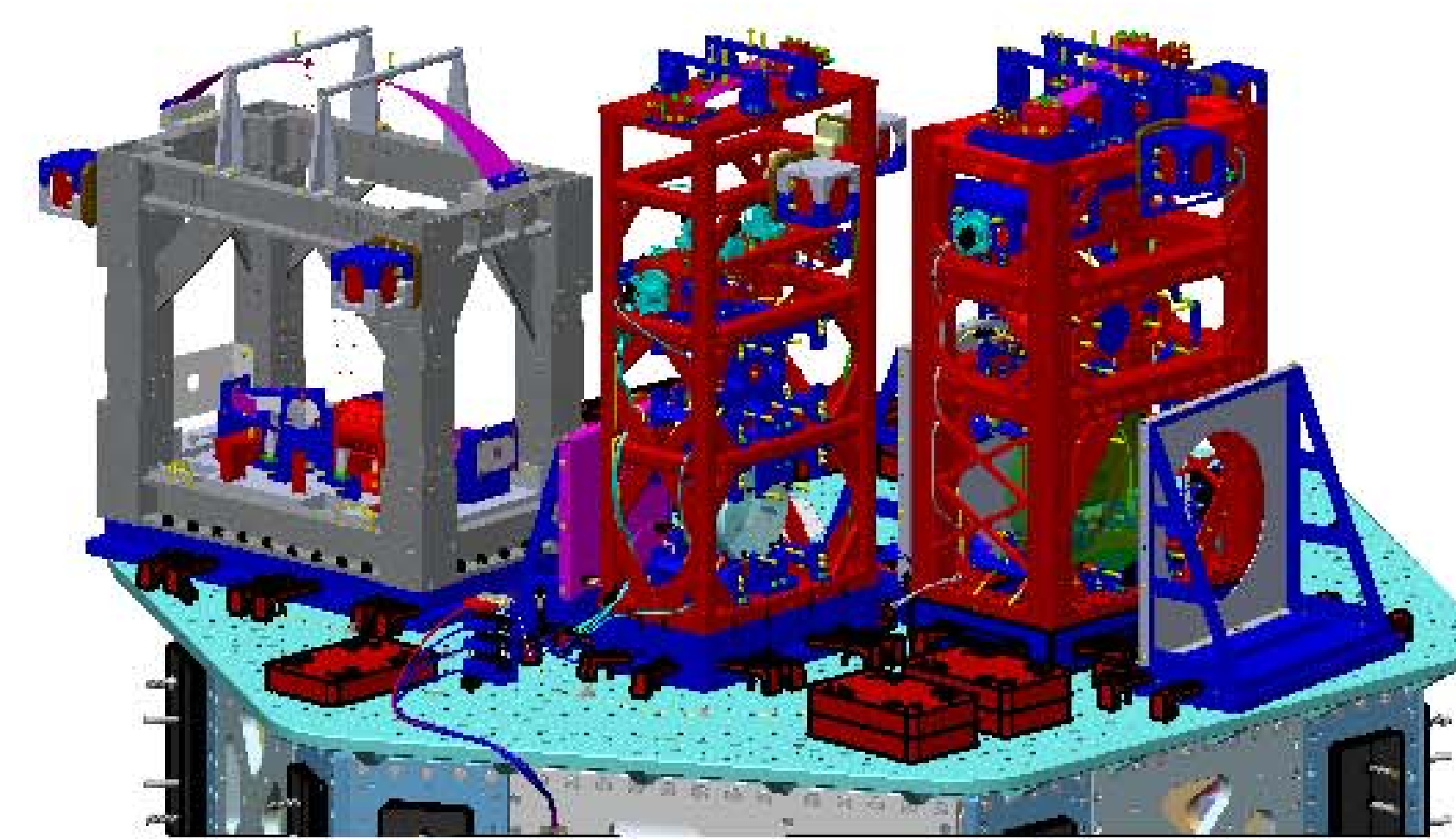
LASER BEAMS - ORTHO VIEWS

LIGO CALIFORNIA INSTITUTE OF TECHNOLOGY MASSACHUSETTS INSTITUTE OF TECHNOLOGY	
SIZE DWG. NO.	REV.
D D0900456	v11
SCALE: 1:24	PROJECTION: 
SHEET 3 OF 4	

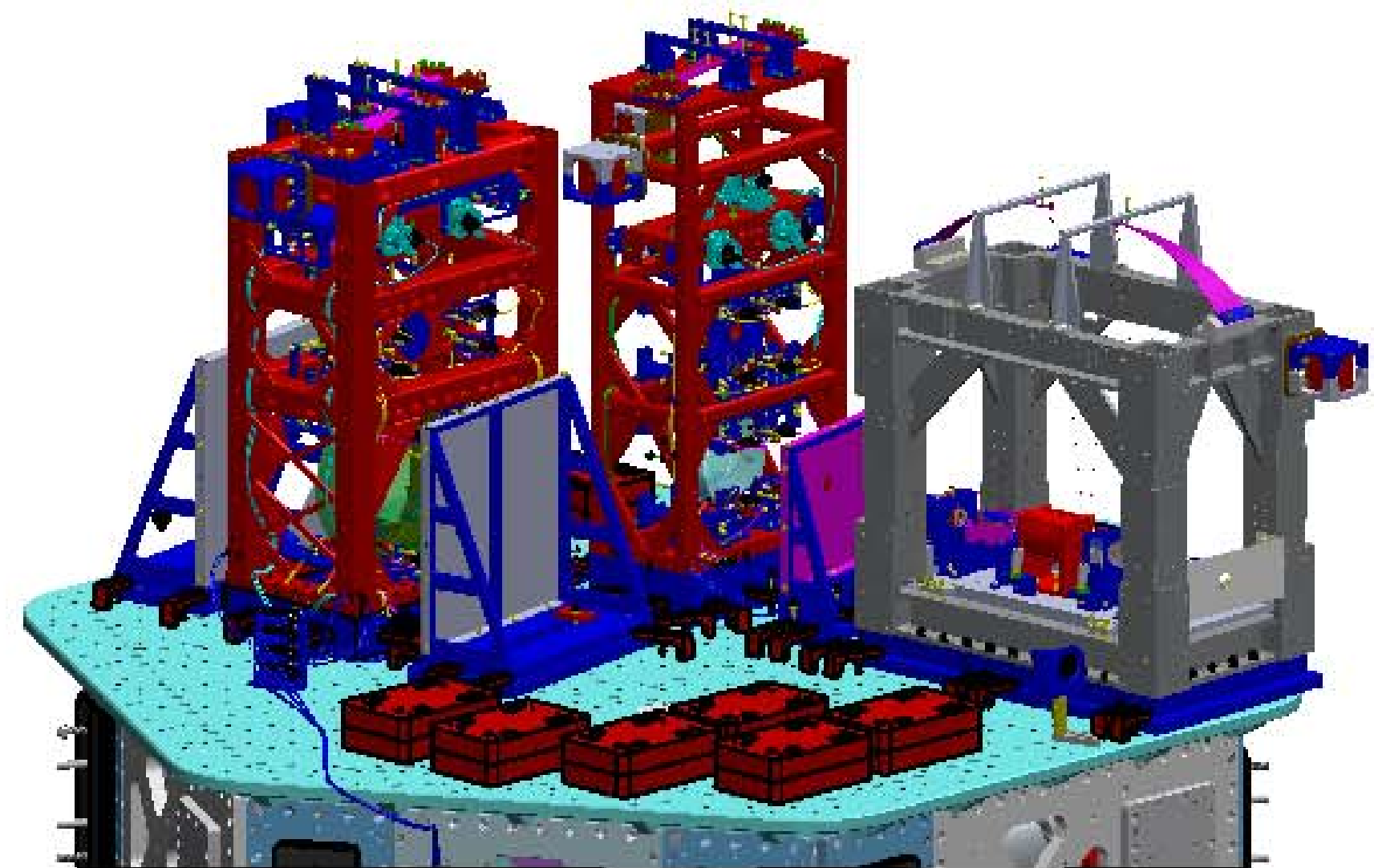
D0900456-ADM-LIGO Systems: HAM5-L1 Top Level Chamber Assembly: ALL PART PDM REV: X-056: DRAWING PDM REV: X-010



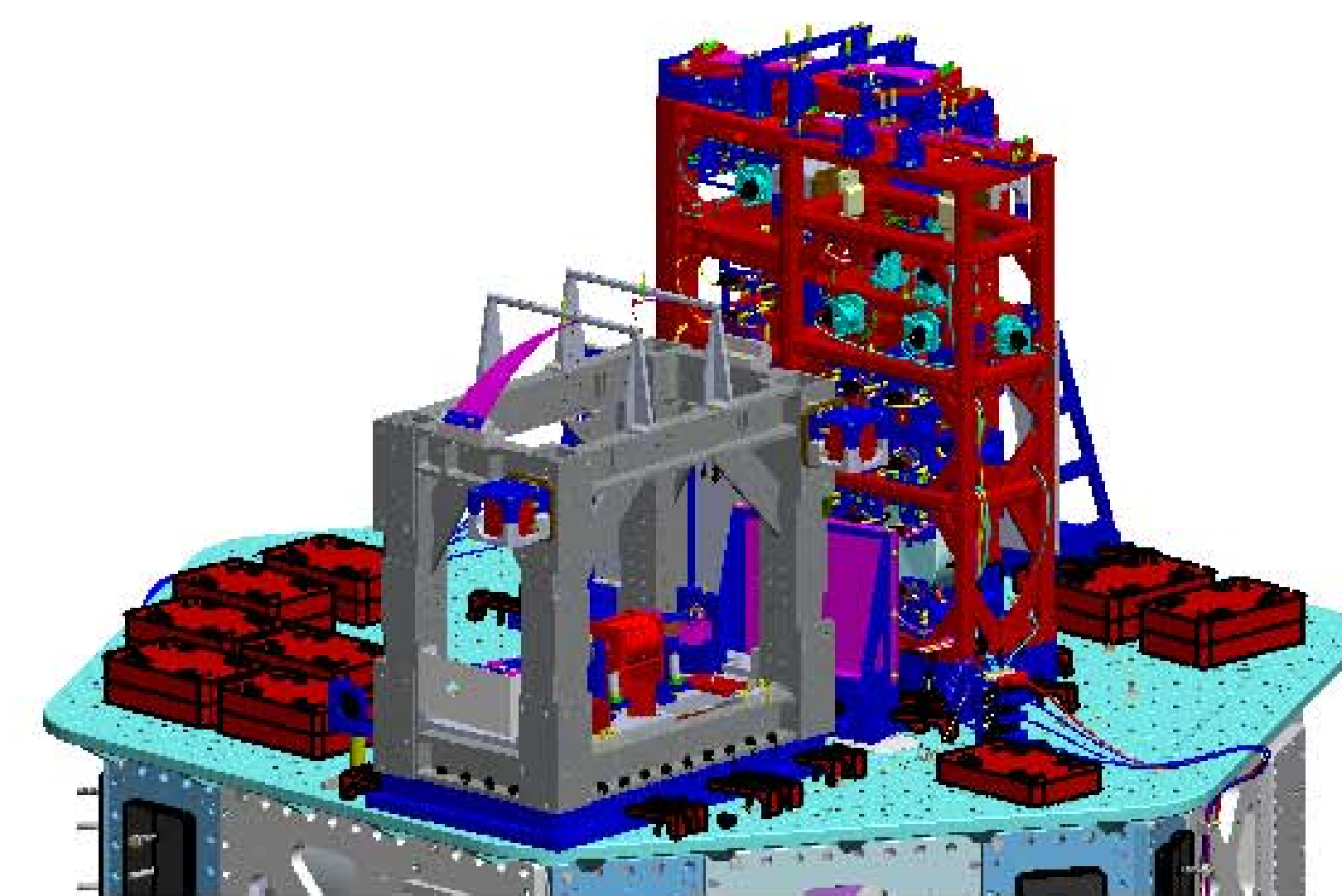
ISO REAR - LEFT



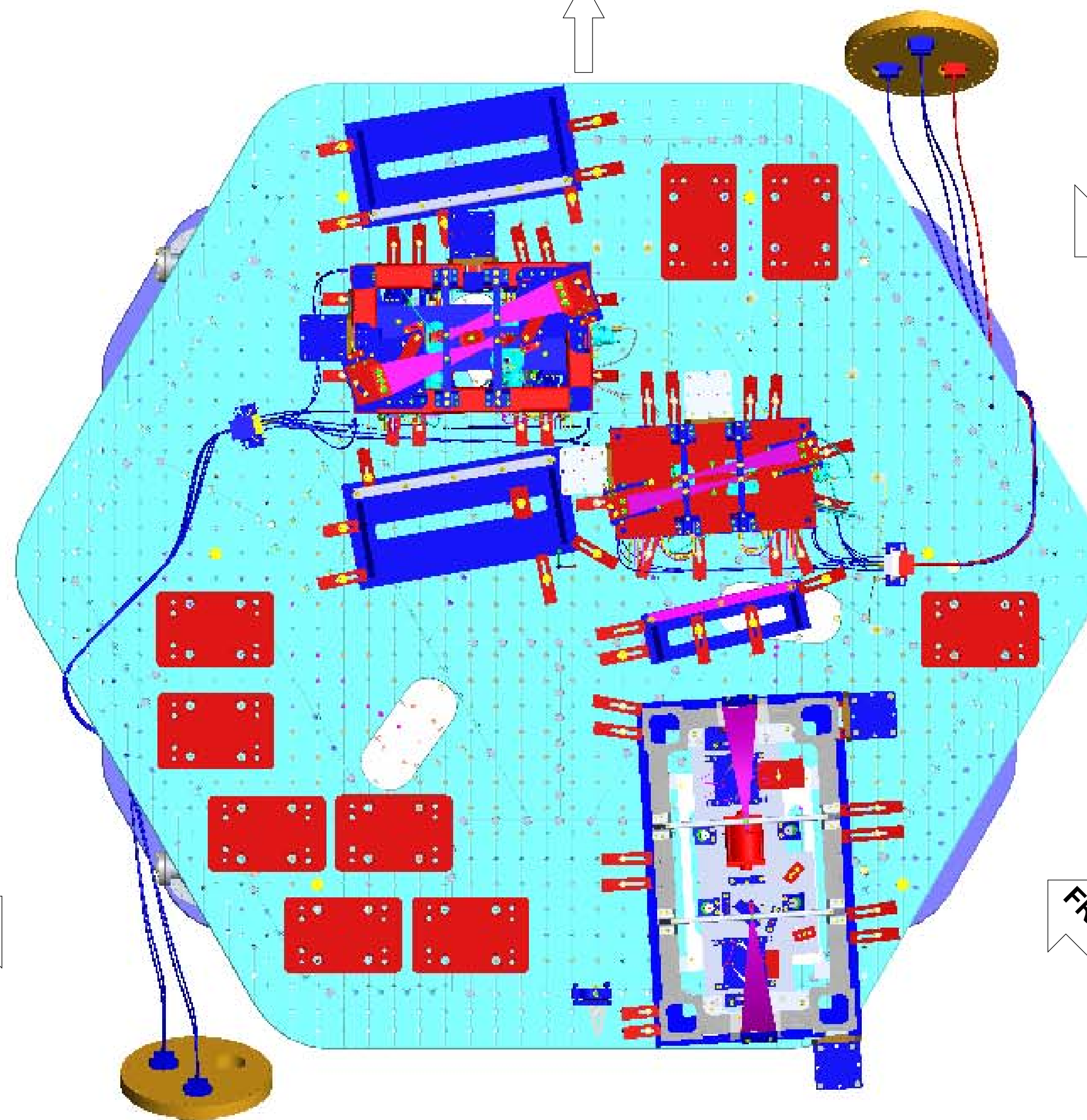
ISO REAR - RIGHT



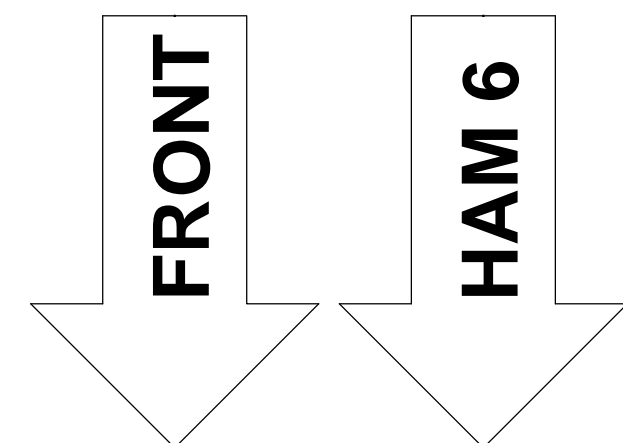
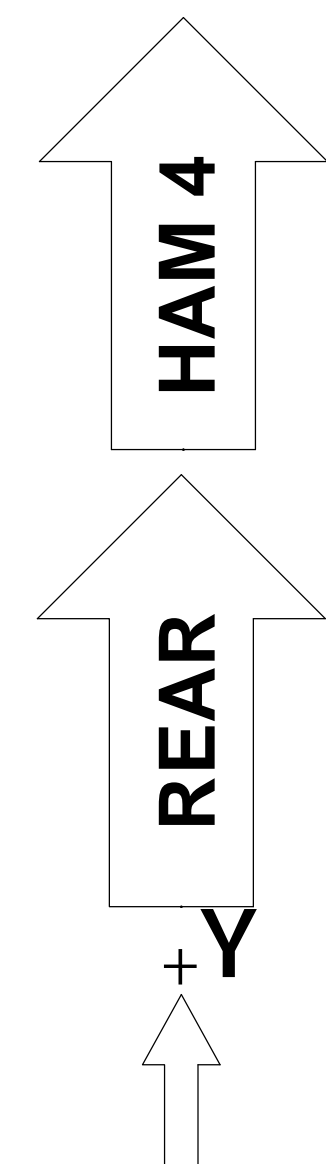
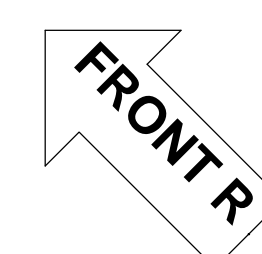
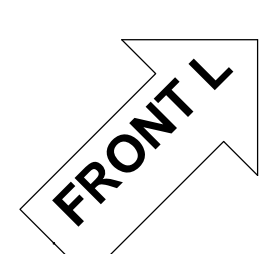
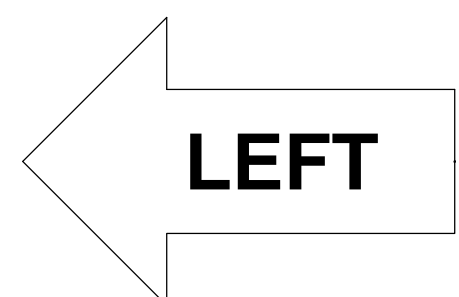
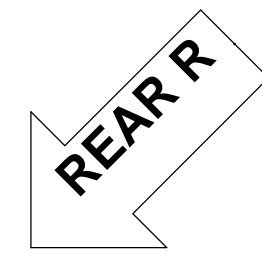
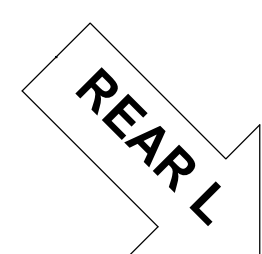
ISO FRONT - LEFT



ISO FRONT - RIGHT



TOP VIEW



LASER BEAMS - ISO VIEWS

LIGO CALIFORNIA INSTITUTE OF TECHNOLOGY MASSACHUSETTS INSTITUTE OF TECHNOLOGY		
SIZE	DWG. NO.	REV.
D	D0900456	v11
SCALE: 1:24	PROJECTION:	SHEET 4 OF 4

D0900456-ADM-LIGO Systems: HAM5-L1 Top Level Chamber Assembly: ALL PART PDM REV. X-056: DRAWING PDM REV. X-010