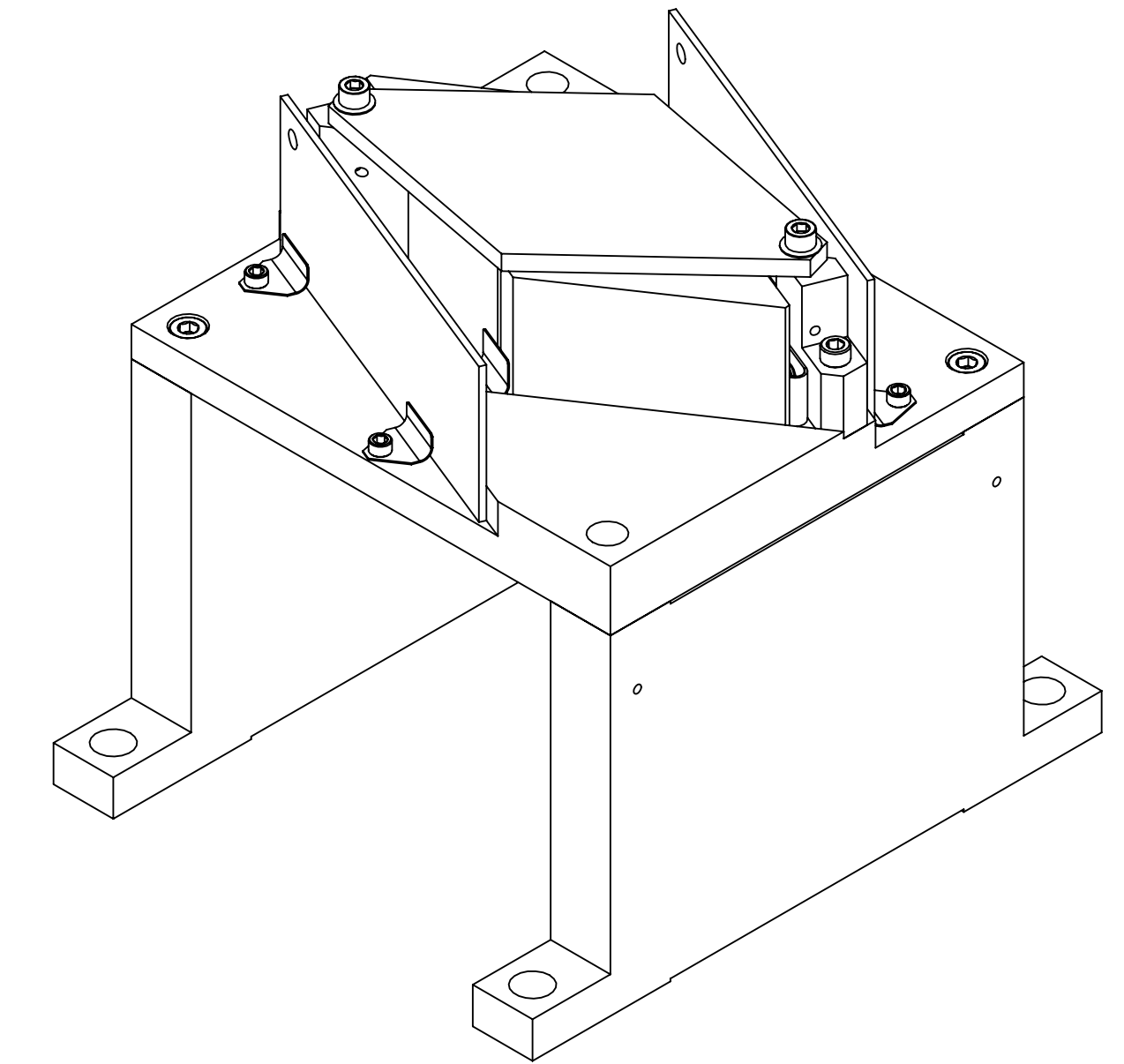
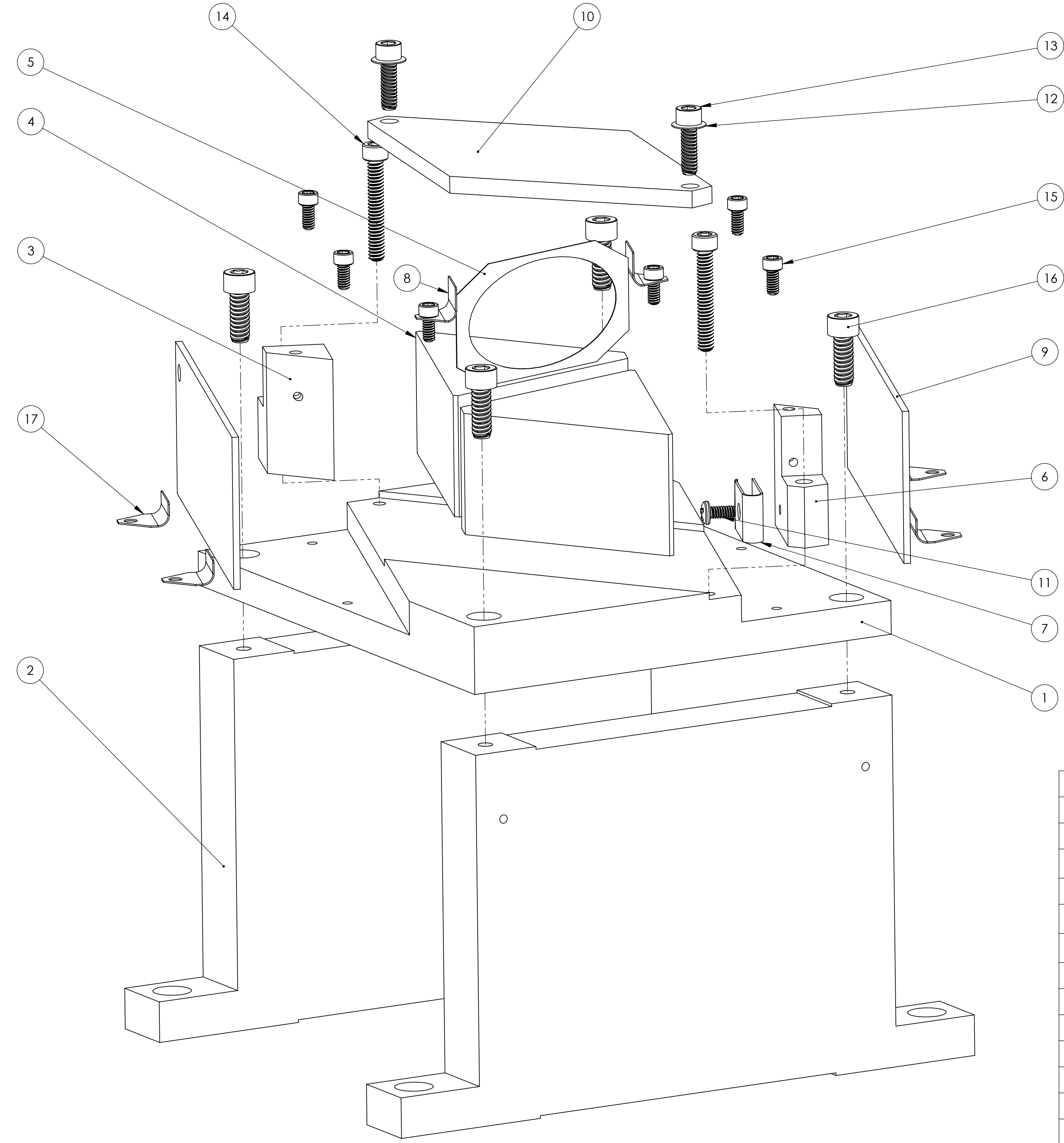
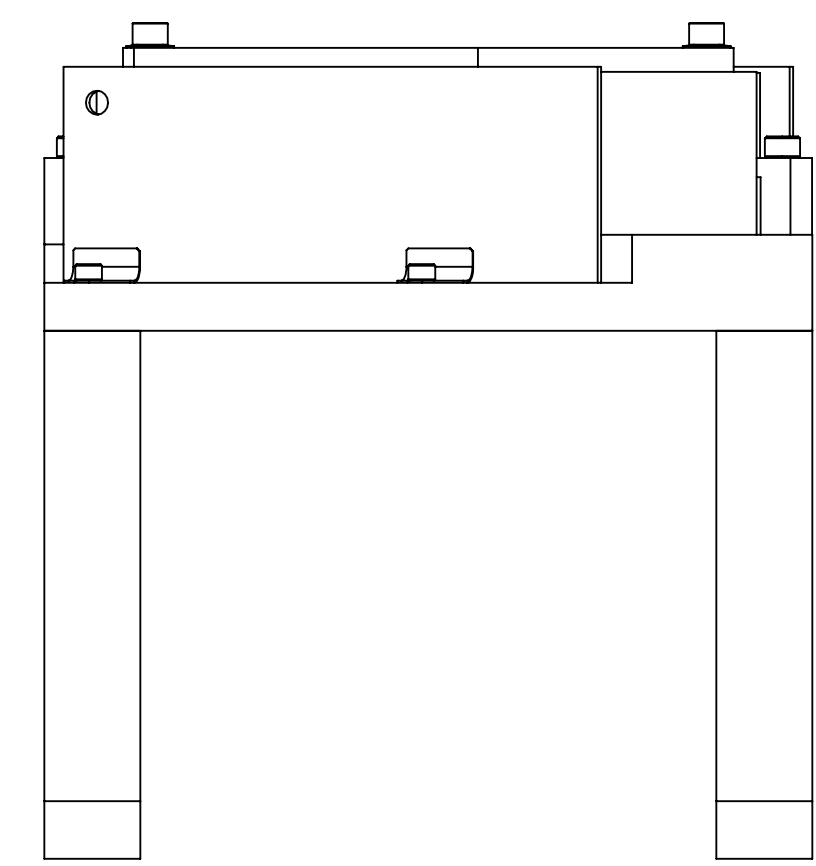
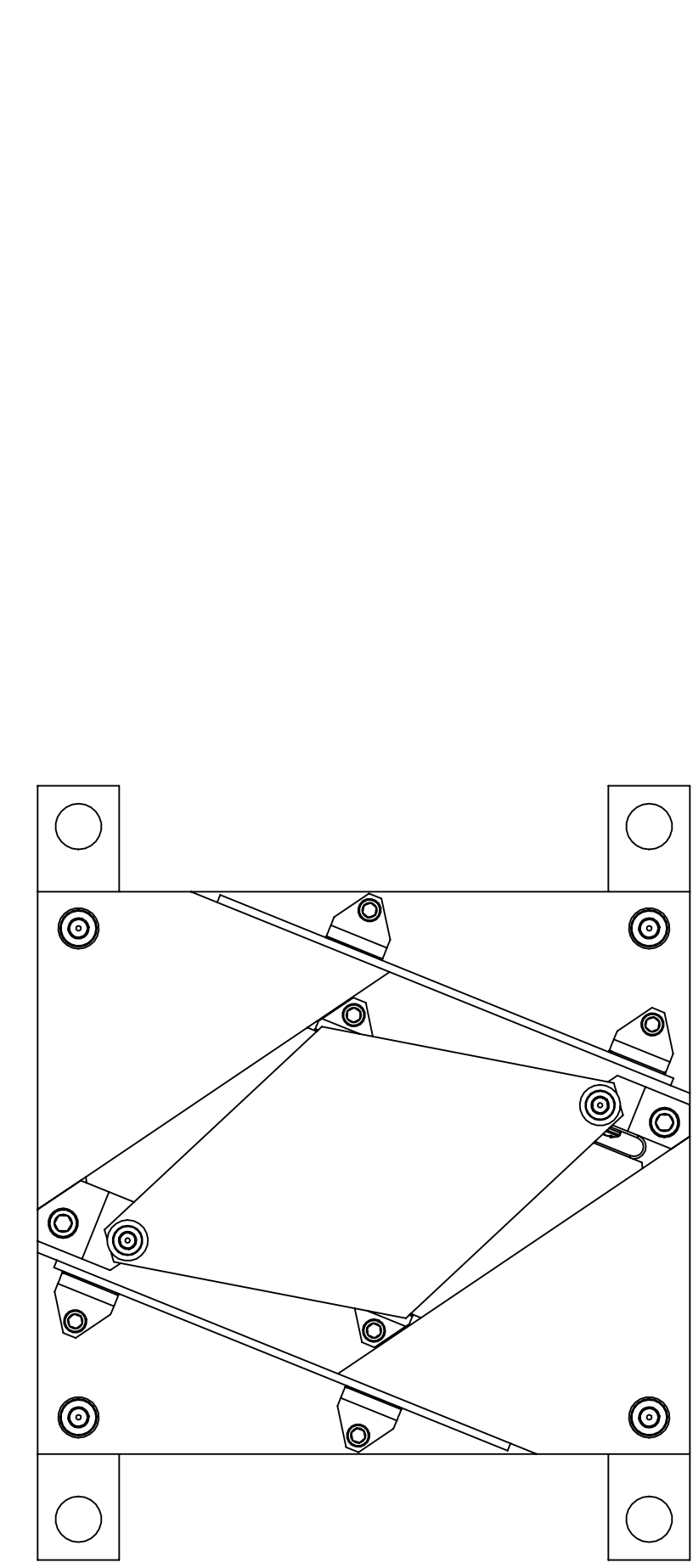


NOTES CONTINUED:
 5. APPROXIMATE WEIGHT = 1.866 LB.
 6. MACHINE ALL SURFACES TO REMOVE OXIDES AND MILL FINISH.
 USE OF ABRASIVE REMOVAL TECHNIQUES IS NOT ALLOWED.
 7. ALL PARTS SHALL BE MANUFACTURED IN ACCORDANCE
 WITH LIGO SPECIFICATION E0900364.

REV.	DATE	DCN #	DRAWING TREE #
v1	8 OCT 2010	E1000563	-
v2	17 DEC 2010	E1000563	-
-	-	-	-



GENERAL VIEW
FOR REFERENCE ONLY
NO SCALE

ITEM NO.	PART NUMBER	DESCRIPTION	MATERIAL	QTY	SPARE	TOTAL
17	D1100027	CLIP	304 SSSL	D09006 14	0	0
16	92200A146	Head Cap Screw 300 Series SS, 6-32 Thrd, 3/8" Length, MS 16995-17	300 SSSL	4	0	0
15	92200A076	Head Cap Screw 300 Series SS, 2-56 Thrd, 3/16" Length, MS 16995-1	300 SSSL	6	0	0
14	92185A112	Head Cap Screw 300 Series SS, 4-40 Thrd, 3/4" Length	300 SSSL	2	0	0
13	92200A108	Head Cap Screw 300 Series SS, 4-40 Thrd, 3/8" Length, MS 16995-10	18-8 SSSL	2	0	0
12	9713K53	Disc Spring, Stainless Steel Belleville, .125 ID, .250 OD, .009 Thick	304 SSSL	2	0	0
11	91772A076	18-8 SS Pan Head Phillips Machine Screw	300 SSSL	1	0	0
10	D0900618	OPTICAL PRISM TOP PLATE	6061-T6 Al	1	0	0
9	D1001864	PRISM BEAM DUMP	A424 TYPE I, 18GA, SSSL	2	0	0
8	D0900619	CLIP	304 SSSL	2	0	0
7	D1001861	U-SPRING	304 SSSL	1	0	0
6	D1001871	SPRING BLOCK_LH	6061-T6 Al	1	0	0
5	D1001863	OPTICAL PRISM SPACER	304 SSSL	1	0	0
4	D0900617	OPTICAL PRISM	BK7 GLASS	2	0	0
3	D1001870	FIXED STOP_LH	6061-T6 Al	1	0	0
2	D1001862	PRISM BASE SUPPORT	6061-T6 Al	2	0	0
1	D0900616	PRISM MOUNT BASE_LH	6061-T6 Al	1	0	0
PARTS LIST						

NOTES AND TOLERANCES: (UNLESS OTHERWISE SPECIFIED)	
DIMENSIONS ARE IN INCHES	
TOLERANCES: .XX ± .01 .XXX ± .005	
ANGULAR ± 0.5°	
MATERIAL	N/A
FINISH	AS RECEIVED

CALIFORNIA INSTITUTE OF TECHNOLOGY MASSACHUSETTS INSTITUTE OF TECHNOLOGY		PART NAME		PRISM MOUNT ASSY_LH	
SYSTEM	ADVANCED LIGO	SUB-SYSTEM	AOS	DESIGNER	TQ. NGUYEN 23 JUL 2010
NEXT ASSY	D0900623	CHECKER	M. SMITH	DATE	27 AUG 2010
APPROVAL	D. COYNE	SCALE	1:1	PROJECTION	
				SIZE	D
				DWG. NO.	D0900614
				REV.	v2
				SHEET 1 OF 1	

D0900616 - D1001862 - Prism Mounting Assy_LH - PART PDM REV: X-012 - DRAWING PDM REV: X-000