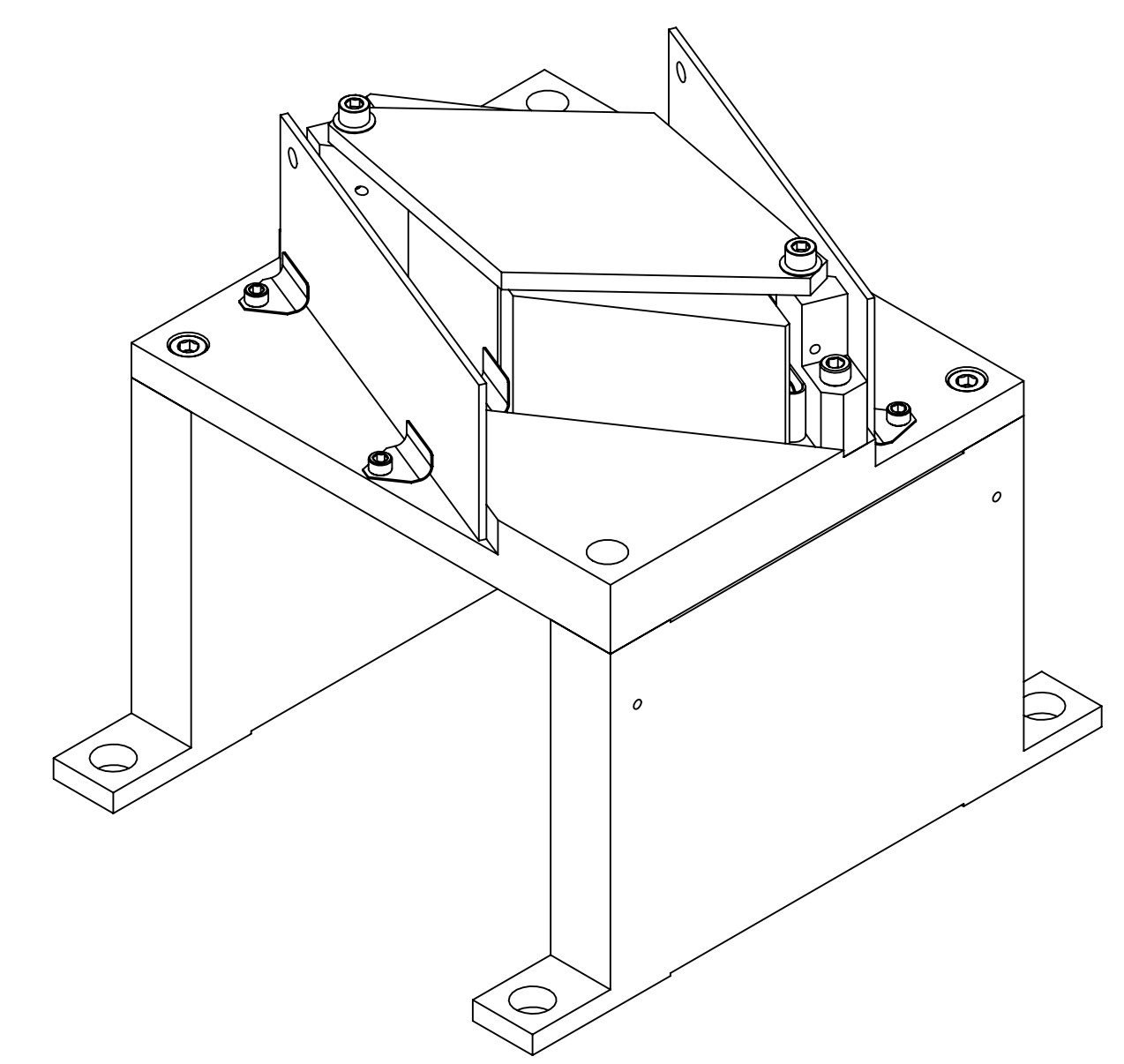
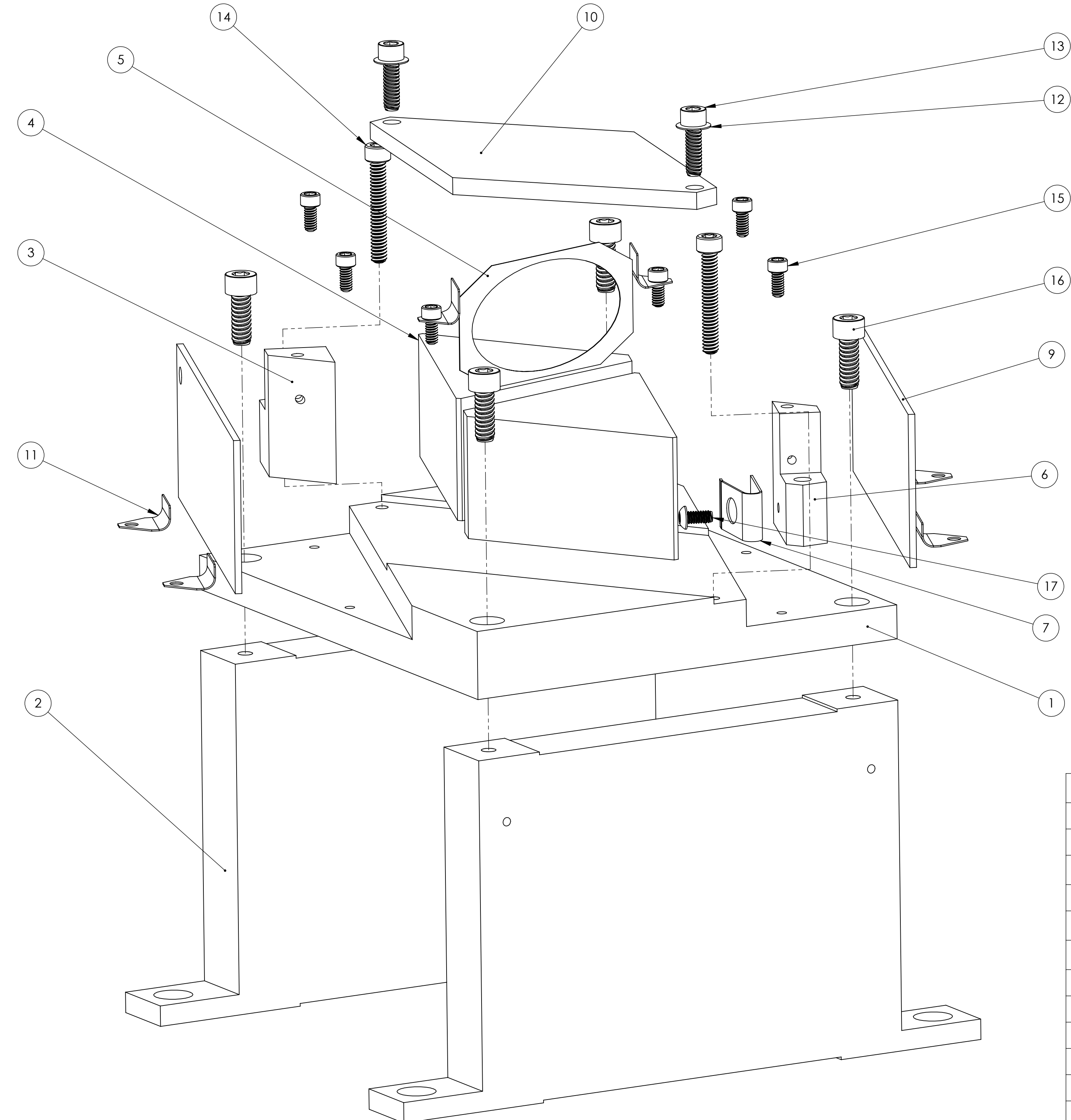
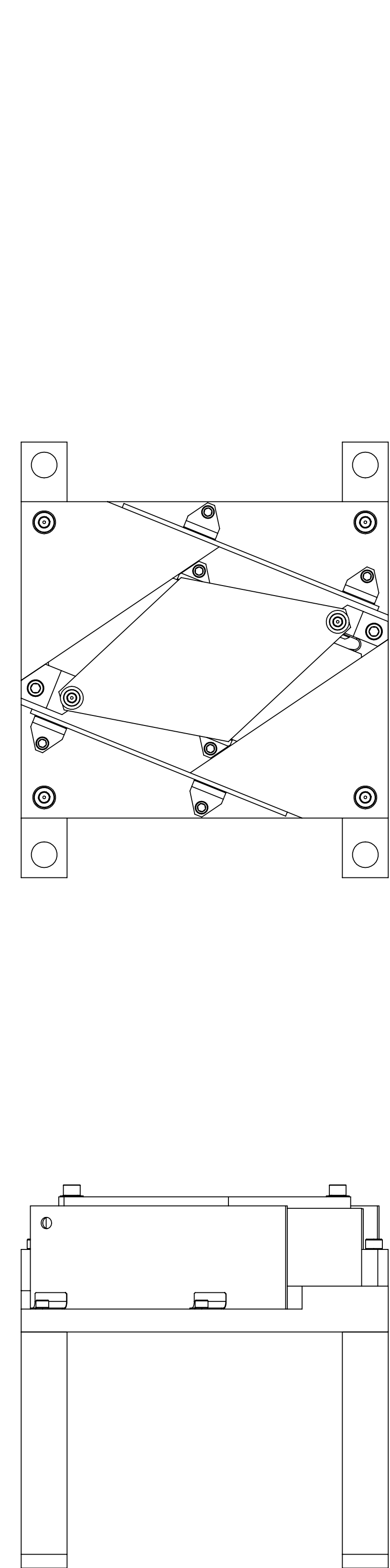


REV.	DATE	DCN #	DRAWING TREE #
v1	8 OCT 2010	E1000563	-
v2	17 DEC 2010	E1000563	-
v3	11 JUN 2011	E1000563	-



GENERAL VIEW  
FOR REFERENCE ONLY  
NO SCALE

ITEM NO.	PART NUMBER	DESCRIPTION	MATERIAL	QTY	SPARE	TOTAL
17	92949A076	18-8 SS Button Head Socket Cap Screw 2-56 Thread, 3/16" Length	18-8 SSSL	1		0
16	92200A146	Head Cap Screw 300 Series SS, 6-32 Thrd, 3/8" Length, MS 16995-17	300 SSSL	4		0
15	92200A076	Head Cap Screw 300 Series SS, 2-56 Thrd, 3/16" Length, MS 16995-1	300 SSSL	6		0
14	92185A112	Head Cap Screw 300 Series SS, 4-40 Thrd, 3/4" Length	300 SSSL	2		0
13	92200A108	Head Cap Screw 300 Series SS, 4-40 Thrd, 3/8" Length, MS 16995-10	18-8 SSSL	2		0
12	9713K53	Disc Spring, Stainless Steel Belleville, .125 ID, .250 OD, .009 Thick	304 SSSL	2		0
11	D1100027	CLIP	304 SSSL	4		0
10	D0900618	OPTICAL PRISM TOP PLATE	6061-T6 Al	1		0
9	D1001864	PRISM BEAM DUMP	A424 TYPE I, 18GA, SSSL	2		0
8	D0900619	CLIP	304 SSSL	2		0
7	D1001861	U-SPRING	304 SSSL	1		0
6	D1001871	SPRING BLOCK_LH	6061-T6 Al	1		0
5	D1001863	OPTICAL PRISM SPACER	304 SSSL	1		0
4	D0900617	OPTICAL PRISM	CALCITE	2		0
3	D1001870	FIXED STOP_LH	6061-T6 Al	1		0
2	D1001862	PRISM BASE SUPPORT	6061-T6 Al	2		0
1	D0900616	PRISM MOUNT BASE_LH	6061-T6 Al	1		0
PARTS LIST						

NOTES AND TOLERANCES: (UNLESS OTHERWISE SPECIFIED)	
1. INTERPRET DRAWING PER ASME Y14.5-1994. 2. REMOVE ALL SHARP EDGES, R.02 MIN. 3. DO NOT SCALE FROM DRAWING. 4. ALL MACHINING FLUIDS MUST BE FULLY SYNTHETIC, FULLY WATER SOLUBLE AND FREE OF SULFUR, SILICONE, AND CHLORINE.	
DIMENSIONS ARE IN INCHES	
TOLERANCES: .XX ± .01 .XXX ± .005	
ANGULAR ± 0.5°	
MATERIAL	N/A
FINISH	AS RECEIVED

<b>LIPO</b> CALIFORNIA INSTITUTE OF TECHNOLOGY MASSACHUSETTS INSTITUTE OF TECHNOLOGY		PART NAME <b>PRISM MOUNT ASSY_LH</b>	
SYSTEM <b>ADVANCED LIPO</b>	SUB-SYSTEM <b>AOS</b>	DESIGNER TQ. NGUYEN	23 JUL 2010
NEXT ASSY <b>D0900623</b>	SIZE <b>D</b>	DWG. NO. <b>D0900614</b>	REV. <b>v3</b>
	CHECKER M. SMITH	27 AUG 2010	
	APPROVAL D. COYNE	SCALE: 1:1	PROJECTION:
			SHEET 1 OF 1

D0900616\_LIPO\_AOS\_Prism Mounting ASSY\_LH\_PART PDM REV: X017\_DRAWING PDM REV: X012