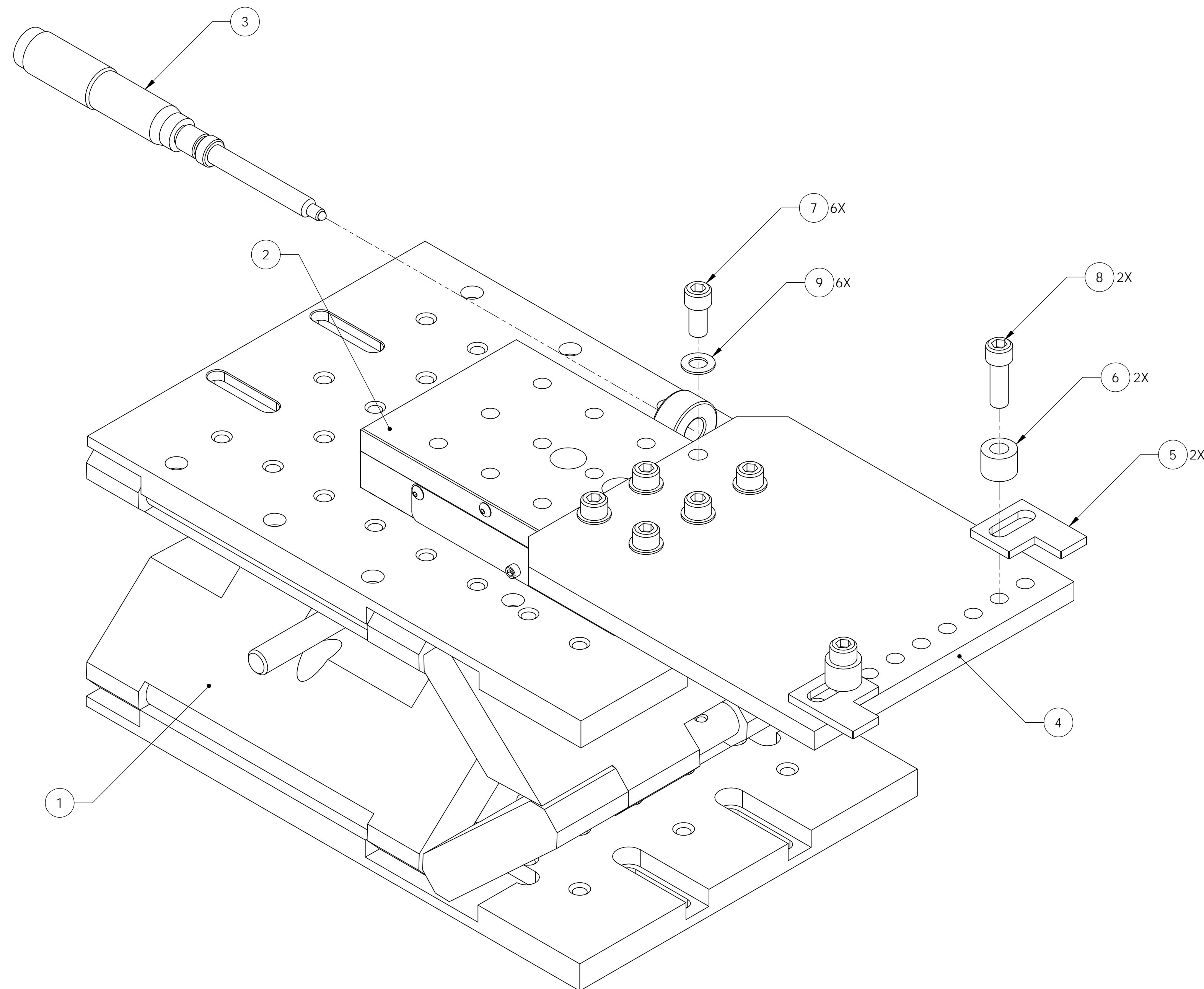


REV.	DATE	DCN #	DRAWING TREE #
v1	21 APR 2009	E0900106	E0900052



ITEM NO.	REQ	SPARE	TOTAL	PART NUMBER	DESCRIPTION	MATERIAL
9	6	2	8	NAS620-C416L	WASHER, FLAT, 1/4 (NAS 620-C416L OR EQUIVALENT)	300 SSSL
8	2	1	3	-	SCREW, SOCKET HEAD CAP, 1/4-20 UNC-2A X 0.75 LONG	300 SSSL
7	6	2	8	-	SCREW, SOCKET HEAD CAP, 1/4-20 UNC-2A X 0.5 LONG	300 SSSL
6	2	1	3	D0900593	STOP SLEEVE, OMC LIFTING JACK	6061-T6 Al
5	2	1	3	D0900591	SUPPORT TAB, OMC LIFTING JACK	6061-T6 Al
4	1	-	1	D0900589	SLIDE PLATE, OMC LIFTING JACK	6061-T6 Al
3	1	-	1	Newport-SM-50	MICROMETER (NEWPORT P/N)	
2	1	-	1	Newport-443	TRANSLATION STAGE (NEWPORT P/N)	
1	1	-	1	Newport-281	LAB JACK (NEWPORT P/N)	
				PART NUMBER	DESCRIPTION	MATERIAL

DIMENSIONS ARE IN INCHES TOLERANCES: .XX ± .01 .XXX ± .005 ANGULAR ± 0.5°		NOTES AND TOLERANCES: (UNLESS OTHERWISE SPECIFIED) 1. INTERPRET DRAWING PER ASME Y14.5-1994. 2. REMOVE ALL SHARP EDGES, R 0.02 MIN. 3. DO NOT SCALE FROM DRAWING. 4. ALL MACHINING FLUIDS SHALL BE WATER SOLUBLE AND FREE OF SULFUR, CHLORINE AND SILICONE, SUCH AS CINCINNATI MILACRON'S CIMTECH 410.		CALIFORNIA INSTITUTE OF TECHNOLOGY MASSACHUSETTS INSTITUTE OF TECHNOLOGY		PART NAME LIFTING JACK ASSEMBLY, OMC	
MATERIAL N/A		FINISH N/A μinch		NEXT ASSY D0900293		DESIGNER K. MAILAND 13 APR 2009	
MATERIAL N/A		FINISH N/A μinch		NEXT ASSY D0900293		DRAFTER B. MOORE 21 APR 2009	
MATERIAL N/A		FINISH N/A μinch		NEXT ASSY D0900293		CHECKER M. MEYER 21 APR 2009	
MATERIAL N/A		FINISH N/A μinch		NEXT ASSY D0900293		APPROVAL	
MATERIAL N/A		FINISH N/A μinch		NEXT ASSY D0900293		SCALE: 1:1 PROJECTION:	
MATERIAL N/A		FINISH N/A μinch		NEXT ASSY D0900293		SHEET 1 OF 1	

D0900643_A01.LIGO.OMC.LIFTING JACK.PART FROM REV. X.001.DRAWING FROM REV. X.001