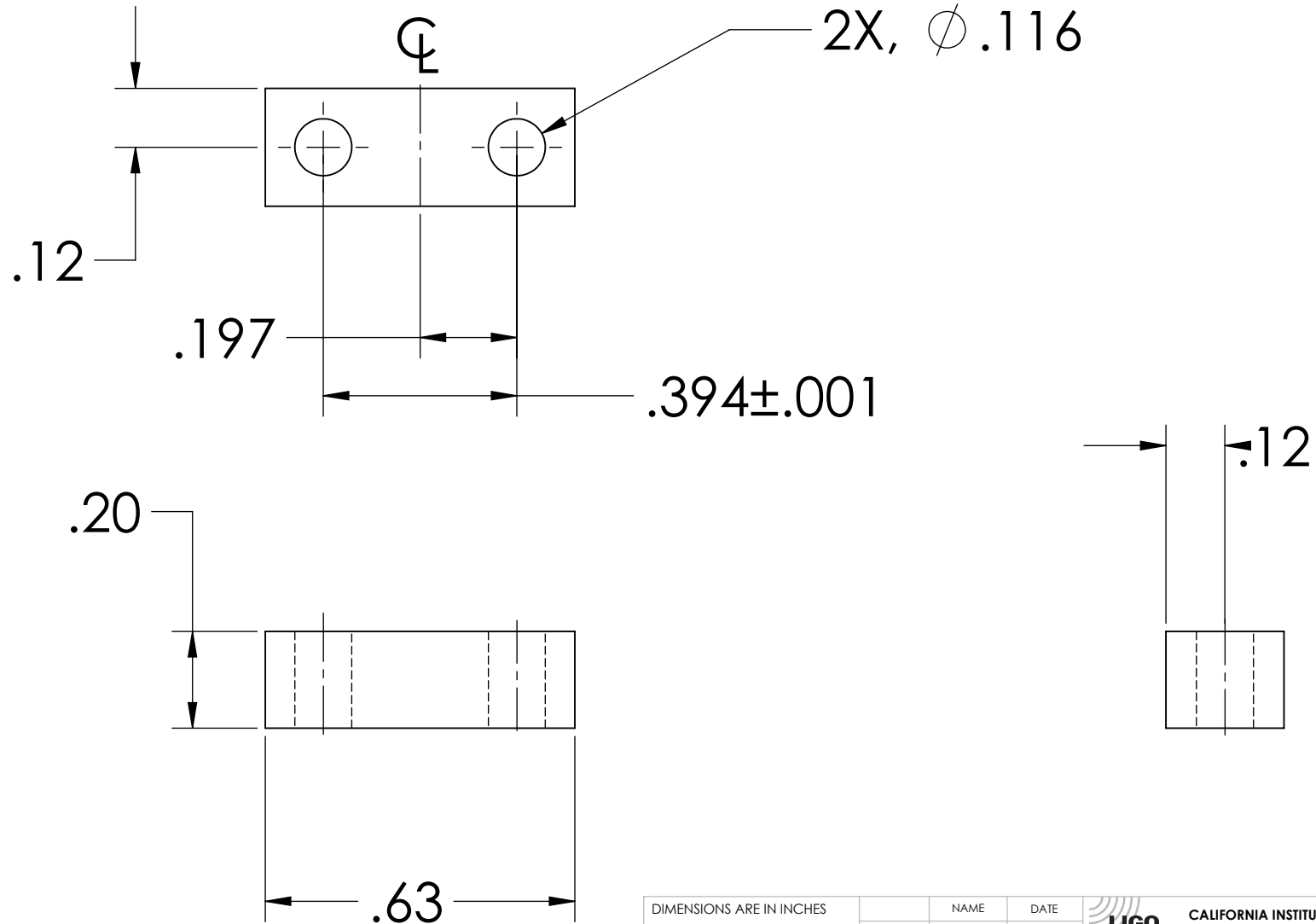



NOTES: (UNLESS OTHERWISE SPECIFIED)

1. DIMENSIONS IN INCHES

2. ALL MACHINING FLUIDS SHALL BE WATER SOLUBLE AND FREE OF SULFUR, CHLORINE AND SILICONE, SUCH AS CINCINNATI MILACRON'S CIMTECH 410 (STAINLESS STEEL)

REV.	DATE	DCN #	DRAWING TREE #
A	24th JUNE 2004	E040303-00	
v1	21 APRIL 2009	E0900107-v1	



DIMENSIONS ARE IN INCHES		NAME	DATE	 <b>CALIFORNIA INSTITUTE OF TECHNOLOGY MASSACHUSETTS INSTITUTE OF TECHNOLOGY</b>
TOLERANCES: .XX ±0.01 .XXX ±0.005 ANGULAR ±1°		CIT/RJ	05/02	
MATERIAL		DRAWN		SYSTEM
302, 304 OR 316 SSSL		CHECKED		SUB-SYSTEM
FINISH		COMMENTS: Matching Parts: D020309 D020139 D020138		MC: UPPER MASS
		PART NAME		UPPER MASS WIRE CLAMP PLATE
		SIZE	DWG. NO.	REV.
		A	D020139	v1
		SCALE: NTS	SHEET 1 OF 1	