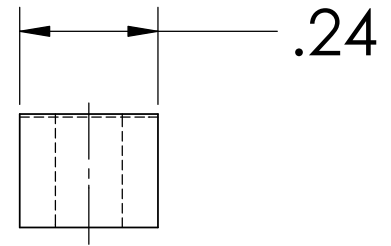
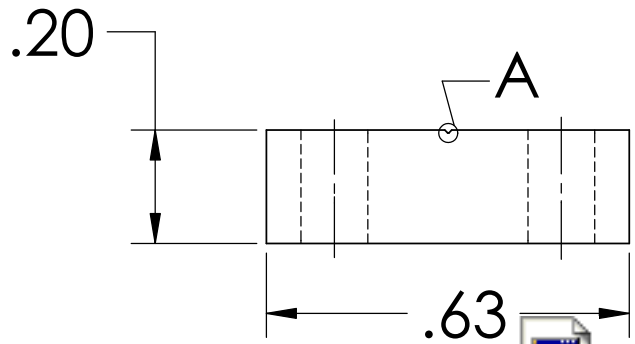
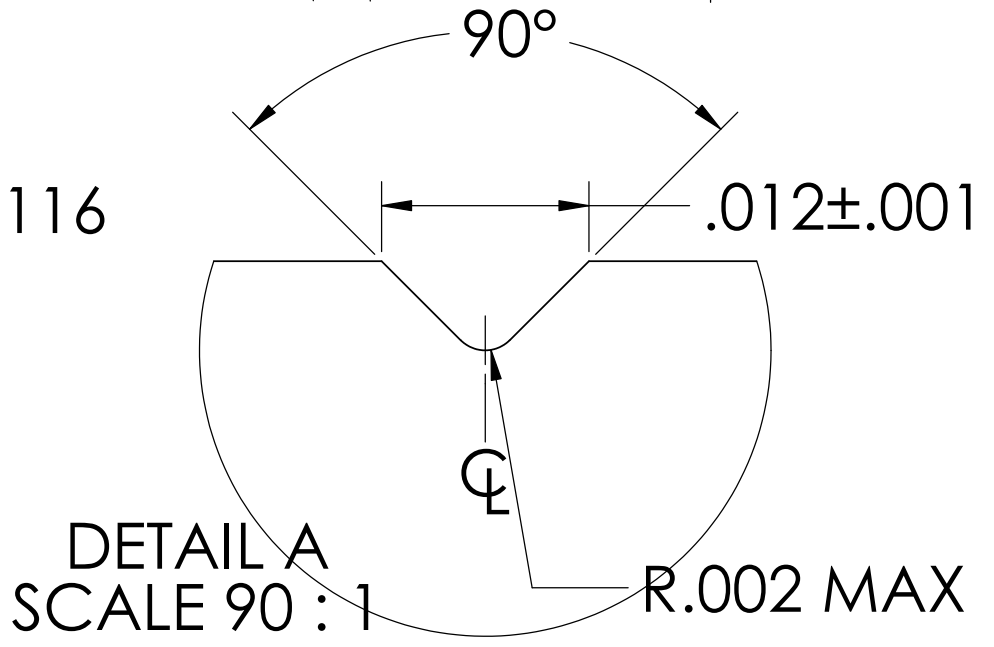
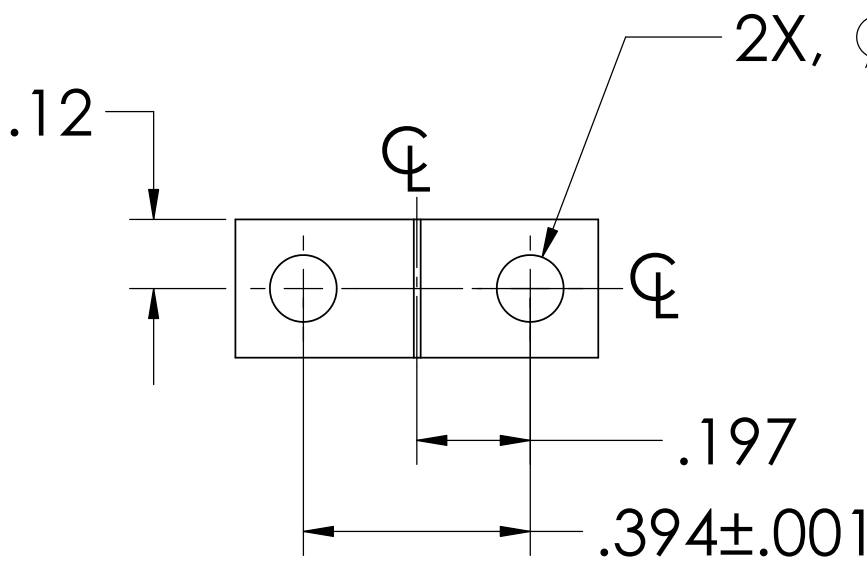


NOTES: (UNLESS OTHERWISE SPECIFIED)


1. DIMENSIONS IN INCHES

2. ALL MACHINING FLUIDS SHALL BE WATER SOLUBLE AND FREE OF SULFUR, CHLORINE AND SILICONE, SUCH AS CINCINNATI MILACRON'S CIMTECH 410 (STAINLESS STEEL)

REV.	DATE	DCN #	DRAWING TREE #
A	24th JUNE 2004	E040303-00	



D020309\_uppermasswireclampplate\_withgroove.step

DIMENSIONS ARE IN INCHES		NAME	DATE	 <b>CALIFORNIA INSTITUTE OF TECHNOLOGY MASSACHUSETTS INSTITUTE OF TECHNOLOGY</b>
TOLERANCES: .XX ±0.01 .XXX ±0.005 ANGULAR±1°		CIT/RJ	05/02	
MATERIAL		COMMENTS:		SYSTEM
300 SERIES STAINLESS		Matching Parts: D020309 D020139 D020138		ADVANCED LIGO
FINISH				SUB-SYSTEM
				SUS
				NEXT ASSY
				MC: UPPER MASS
				PART NAME
				UPPER MASS WIRE CLAMP PLATE
		SIZE	DWG. NO.	REV.
		A	D020309	A
		SCALE: NTS	SHEET 1 OF 1	