

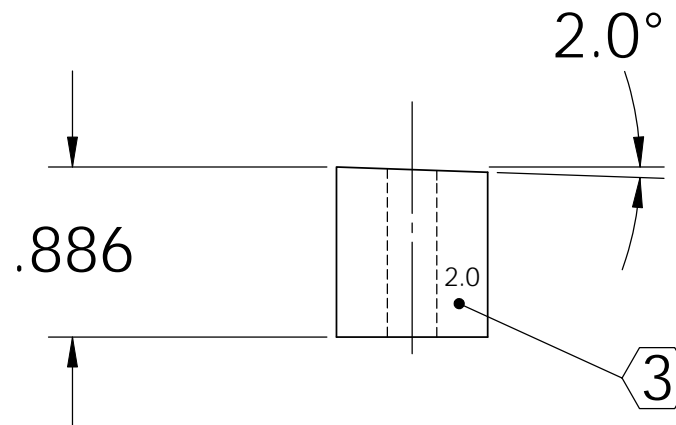
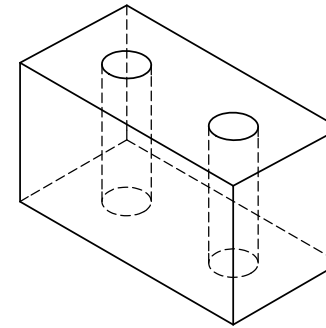
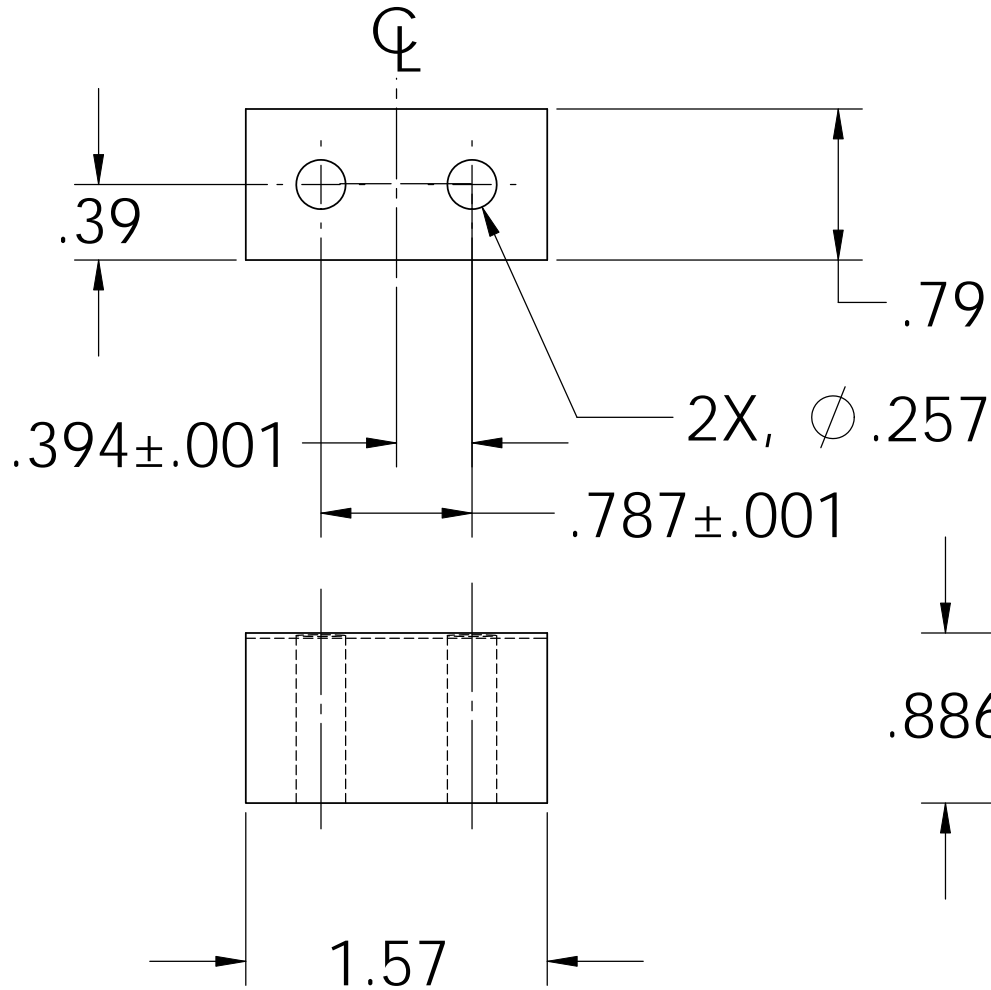
NOTES: (UNLESS OTHERWISE SPECIFIED)


1. DIMENSIONS IN INCHES

2. ALL MACHINING FLUIDS SHALL BE WATER SOLUBLE AND FREE OF SULFUR, CHLORINE AND SILICONE, SUCH AS CINCINNATI MILACRON'S CIMTECH 410 (STAINLESS STEEL)

③ USING A VIBRATORY TOOL MARK PART AS INDICATED

REV.	DATE	DCN #	DRAWING TREE #
A	24 JUNE 2004	E040303-00	
v1	21 APRIL 2009	E0900107-v1	



DIMENSIONS ARE IN INCHES		NAME	DATE	 CALIFORNIA INSTITUTE OF TECHNOLOGY MASSACHUSETTS INSTITUTE OF TECHNOLOGY
TOLERANCES: .XX ±0.01 .XXX ±0.005 ANGULAR ±.25°		CIT/RJ	05/02	
MATERIAL 302, 304 OR 316 STAINLESS		CHECKED		SYSTEM ADVANCED LIGO
FINISH				SUB-SYSTEM SUS
		COMMENTS:		NEXT ASSY LIBRARY OF CLAMPS
				PART NAME UPPER BLADE CLAMP LOWER SIDE ANGLED
		SIZE A	DWG. NO. D020311	REV. v1
		SCALE: NTS		SHEET 1 OF 1