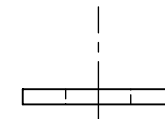
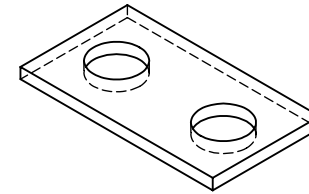
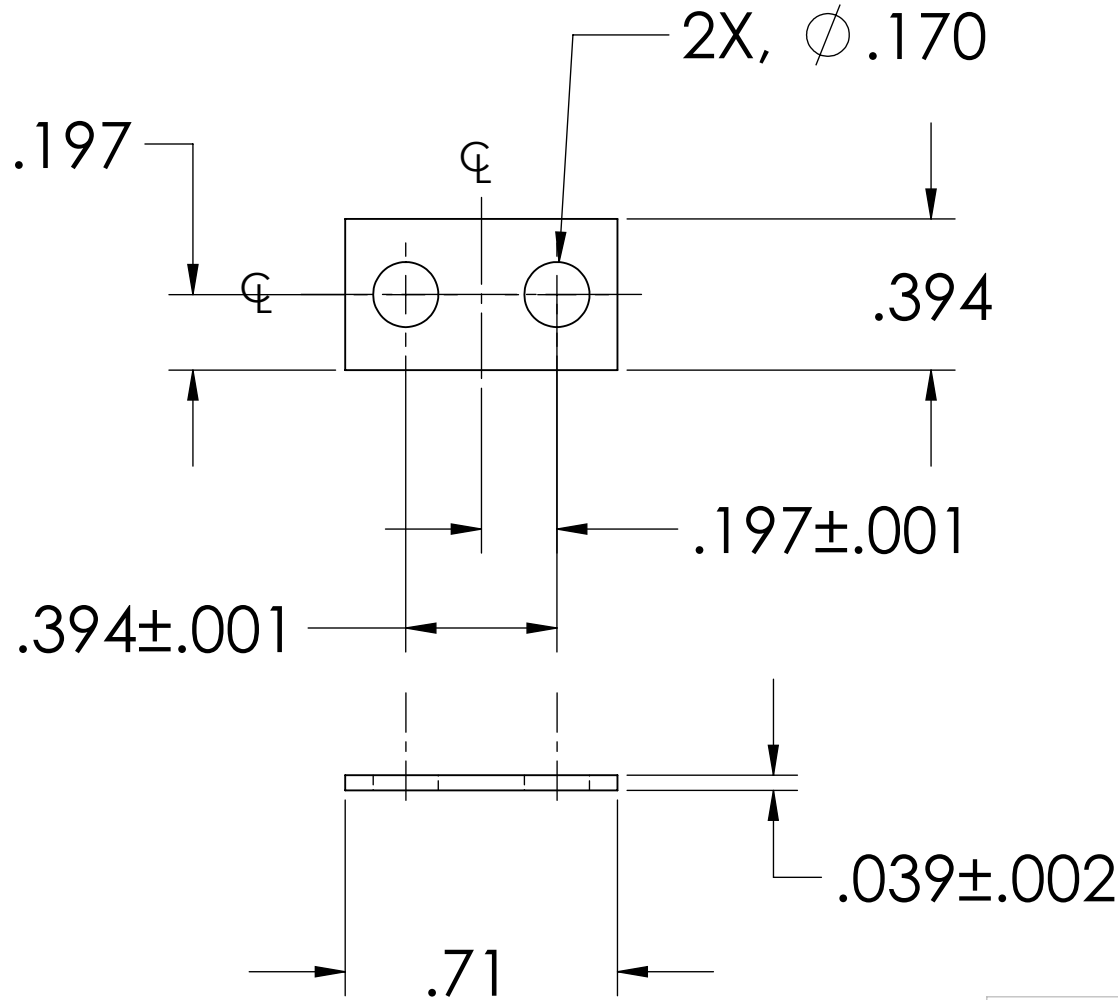



NOTES: (UNLESS OTHERWISE SPECIFIED)

1. DIMENSIONS IN INCHES

2. ALL MACHINING FLUIDS SHALL BE WATER SOLUBLE AND FREE OF SULFUR, CHLORINE AND SILICONE, SUCH AS CINCINNATI MILACRON'S CIMTECH 410 (STAINLESS STEEL)

| REV. | DATE          | DCN #       | DRAWING TREE # |
|------|---------------|-------------|----------------|
| A    | 24 JUNE 2004  | E040303-00  |                |
| v1   | 21 APRIL 2009 | E0900107-v1 |                |



|  |  |                  |                            |   |
|--|--|------------------|----------------------------|---|
| DIMENSIONS ARE IN INCHES                               |  | NAME             | DATE                       |  <b>CALIFORNIA INSTITUTE OF TECHNOLOGY<br/>MASSACHUSETTS INSTITUTE OF TECHNOLOGY</b> |
| TOLERANCES:<br>.XX ±0.01<br>.XXX ±0.005<br>ANGULAR ±1° |  | CIT              | 02/02                      |   |
| MATERIAL<br>302, 304 OR 316 SSSL                       |  | DRAWN            |                            | SYSTEM<br><b>ADVANCED LIGO</b>  |
| FINISH   |  | CHECKED          |                            | SUB-SYSTEM<br><b>SUS</b>  |
|  |  | COMMENTS:        |                            | NEXT ASSY<br><b>LIBRARY OF CLAMPS</b>   |
|  |  |                  |                            | PART NAME<br>LOWER BLADE CLAMP<br>LOWER SIDE SHIM 1mm   |
|  |  | SIZE<br><b>A</b> | DWG. NO.<br><b>D020682</b> | REV.<br>v1  |
|  |  | SCALE: NTS       |                            | SHEET 1 OF 1  |