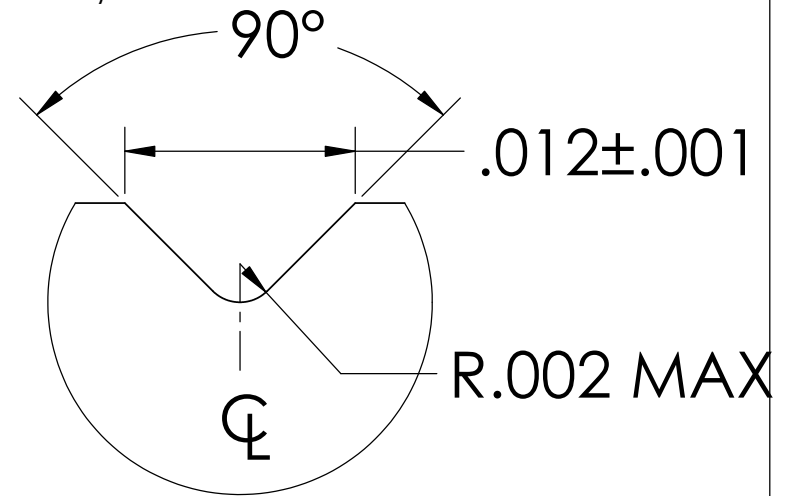
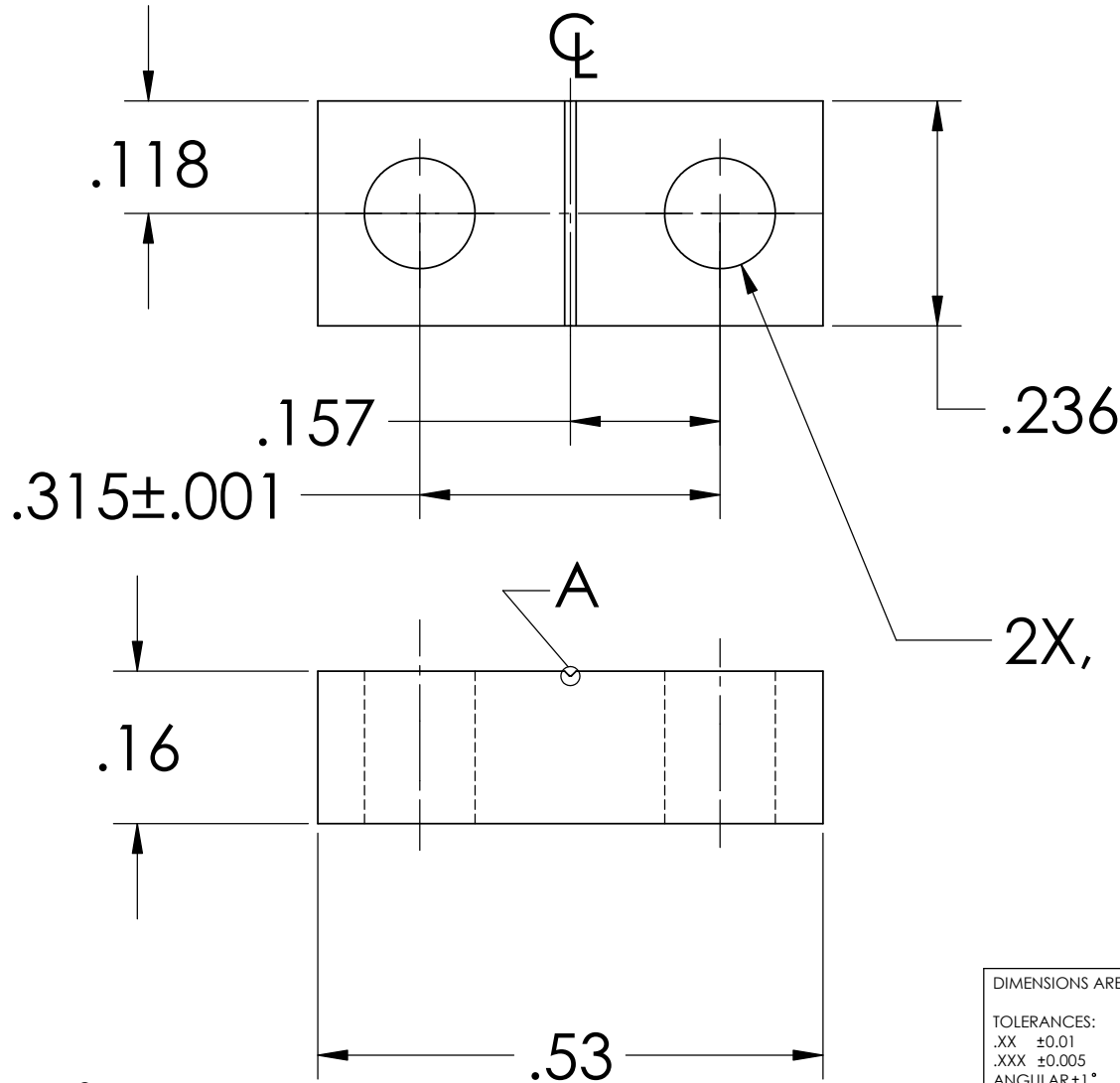


NOTES: (UNLESS OTHERWISE SPECIFIED)

1. DIMENSIONS IN INCHES

2. ALL MACHINING FLUIDS SHALL BE WATER SOLUBLE AND FREE OF SULFUR, CHLORINE AND SILICONE, SUCH AS CINCINNATI MILACRON'S CIMTECH 410 (STAINLESS STEEL)

REV.	DATE	COMMENT
A	24th JUNE 2004	E040303-00



DETAIL A
SCALE 100 : 1

2X, ϕ .116



DIMENSIONS ARE IN INCHES		NAME	DATE	CALIFORNIA INSTITUTE OF TECHNOLOGY MASSACHUSETTS INSTITUTE OF TECHNOLOGY
TOLERANCES: .XX ±0.01 .XXX ±0.005 ANGULAR±1°		DRAWN CIT/RJ	05/02	
MATERIAL 300 SERIES STAINLESS		CHECKED		SYSTEM ADVANCED LIGO
FINISH				SUB-SYSTEM SUS
COMMENTS:				NEXT ASSY MC: UPPER MASS
				PART NAME UPPER BLADE WIRE CLAMP PLATE
		SIZE A	DWG. NO. D030042	REV. A
		SCALE: NTS		SHEET 1 OF 1