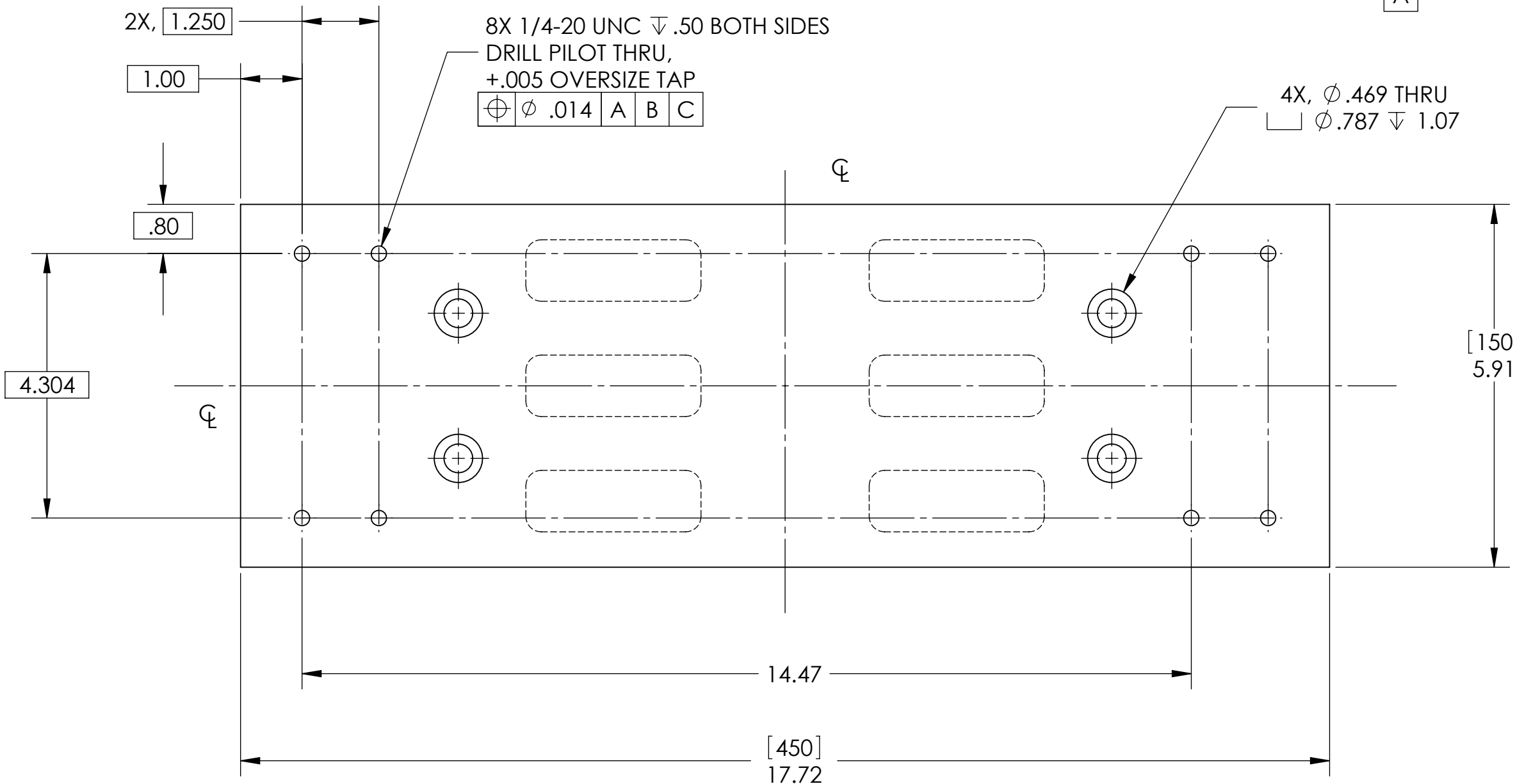
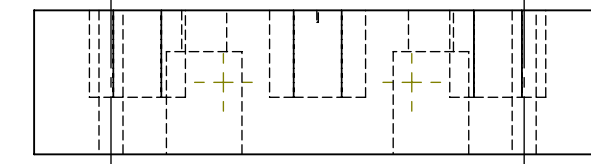
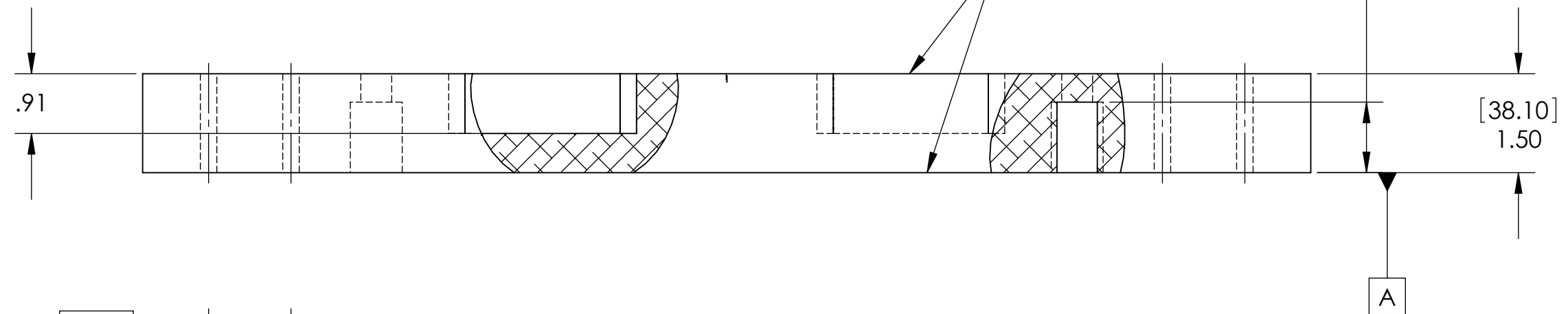
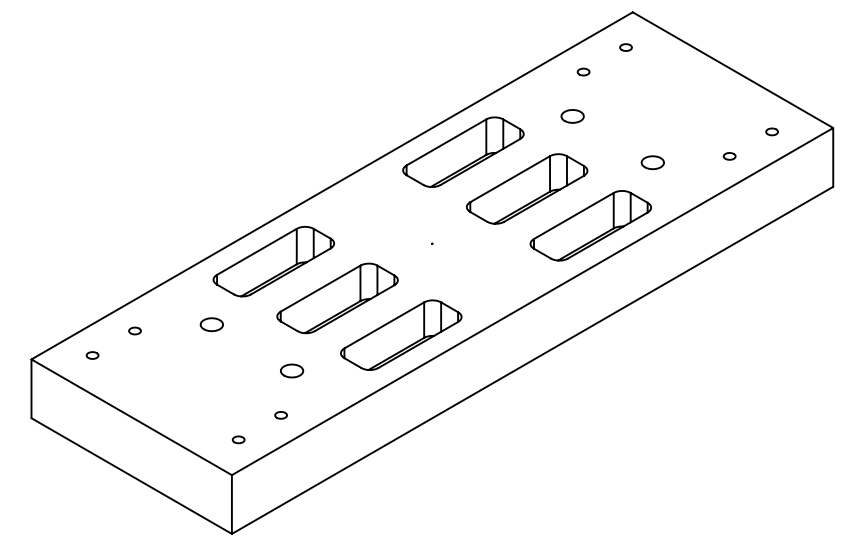
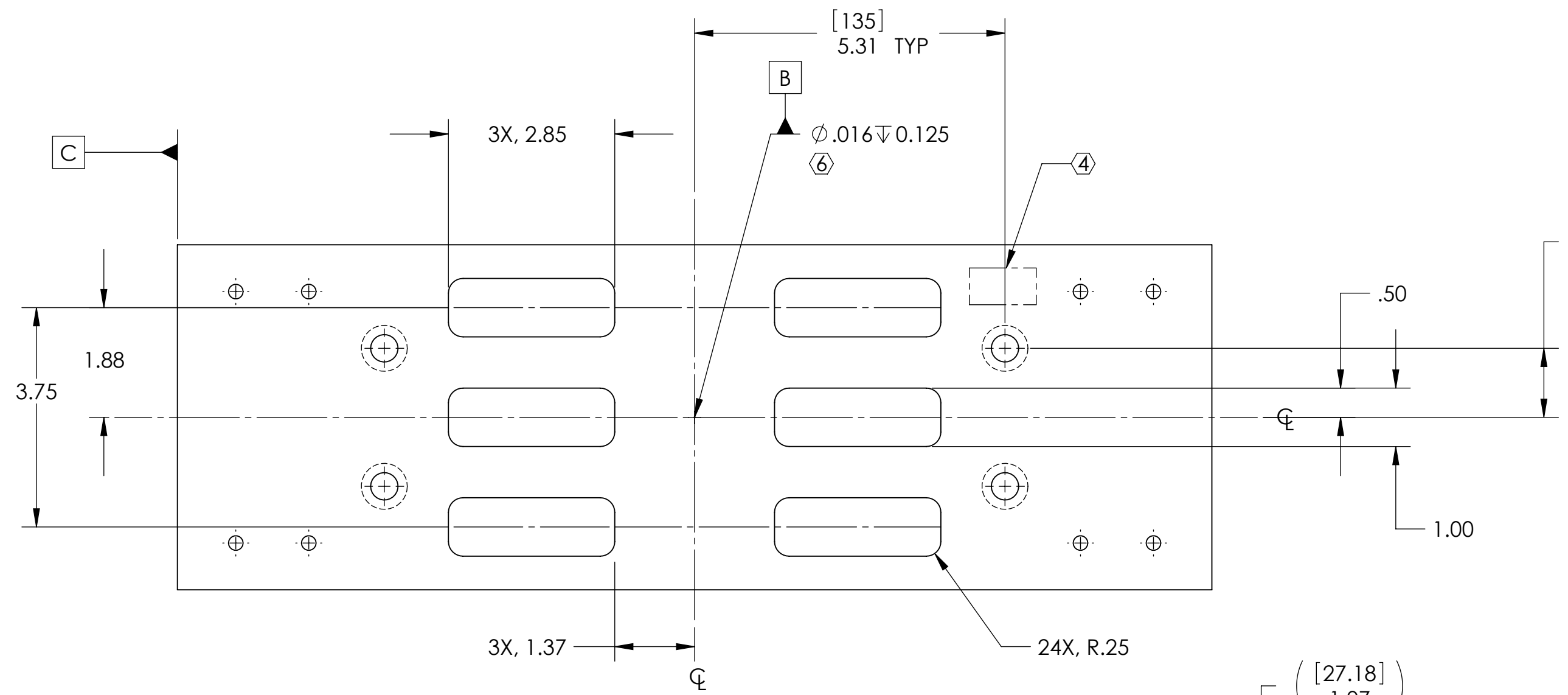


REV.	DATE	DCN #	DRAWING TREE #
A	9 FEB 2007	E070025-00-D	
B	5 JUL 2007	E070186-00-D	
C	18 MAR 2008	E080111-D	



ADDITIONAL NOTES:

5. FILLET RADII .04 MAX.

⑥ INDICATED HOLE SHALL BE USED FOR DIMENSIONING AND INSPECTION PURPOSES. THE PART IS SYMMETRIC ABOUT HOLE IN TWO PLANES.

⑦ FINAL MASS OF PART SHALL BE 6.140 KG + .020, - 0.100 kg. THIS SHOULD BE OBTAINED BY FLY CUTTING THE THICKNESS (1.50")

PARTS LIST		NOTES: (UNLESS OTHERWISE SPECIFIED)		DIMENSIONS ARE IN INCHES [mm]	
1. DO NOT SCALE FROM DRAWING. 2. REMOVE ALL SHARP EDGES, R.02 MAX. 3. ALL MACHINING FLUIDS SHALL BE WATER SOLUBLE AND FREE OF SULFUR, CHLORINE AND SILICONE.		TOLERANCES: .XX ± 0.01 .XXX ± 0.005 ANGULAR ± 0.5 °		CALIFORNIA INSTITUTE OF TECHNOLOGY MASSACHUSETTS INSTITUTE OF TECHNOLOGY IGR, GLASGOW UNIVERSITY GEO 600 GROUP SCOTTISH UNIVERSITIES PHYSICS ALLIANCE TECHNOLOGY FOR EXPERIMENTAL & OBSERVATIONAL PHYSICS IN SCOTLAND (TEOPS)	
④ SCRIBE, ENGRAVE OR MECHANICALLY STAMP DRAWING (NO INKS OR DYES) PART NUMBER, REVISION, ON NOTED SURFACE OF PART FOLLOWED ON THE NEXT LINE WITH A THREE DIGIT SERIAL NUMBER. SERIAL NUMBERS START AT 001 FOR THE FIRST ARTICLE AND PROCEED CONSECUTIVELY. USE 1/2" HIGH CHARACTERS, UNLESS THE SIZE OF THE PART DICTATES SMALL CHARACTERS. A VIBRATORY TOOL MAY BE USED. EXAMPLE: D052247-A S/N 001		MATERIAL 6061-T6-Al		SYSTEM ADVANCED LIGO	
FINISH 32 μ in ch		SUB-SYSTEM SUS		NEXT ASSY OMC	
DRAWN C. TORRIE 7 FEB 2007		PART NAME METAL DUMMY OPTICAL BENCH		SIZE DWG. NO. D070027	
CHECKED D. BRIDGES 24 APR 2008		SCALE: 1:2		PROJECTION:	
APPROVED S/N 001		REV. VI		SHEET 1 OF 1	