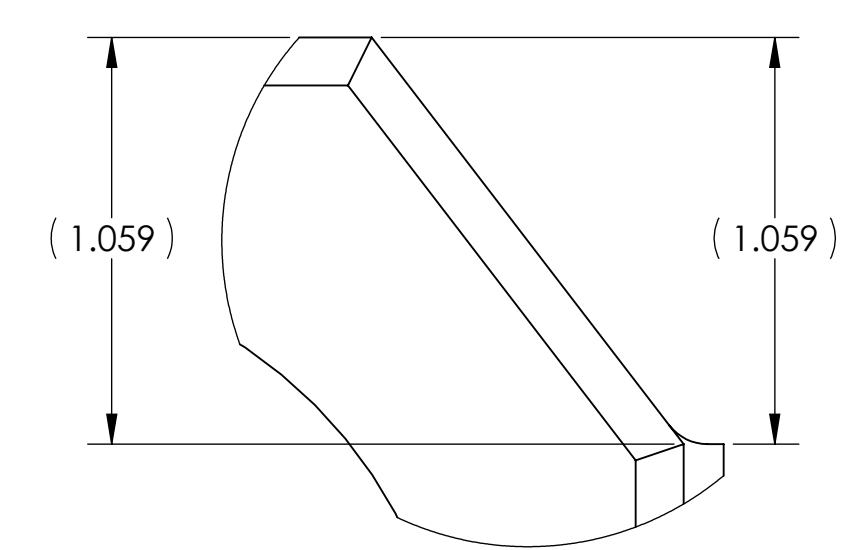
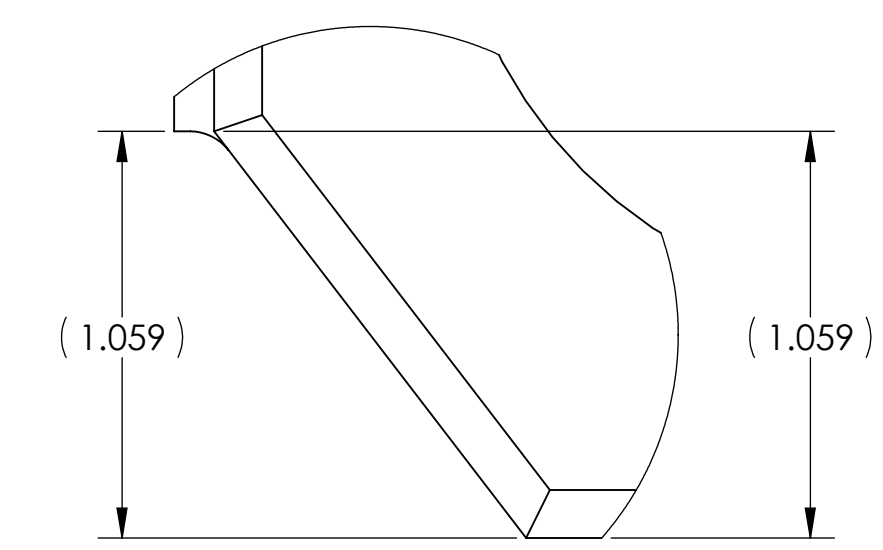
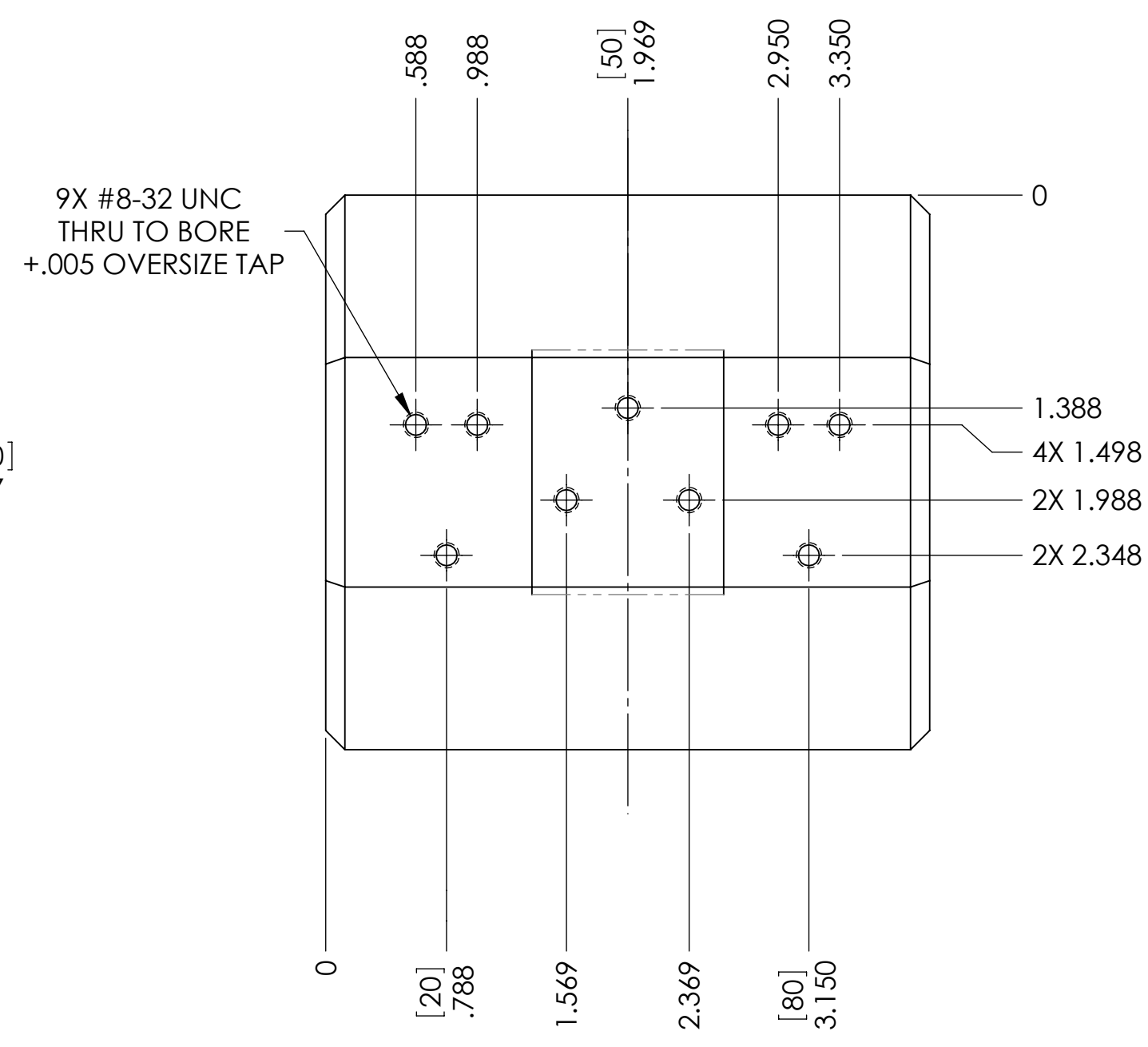
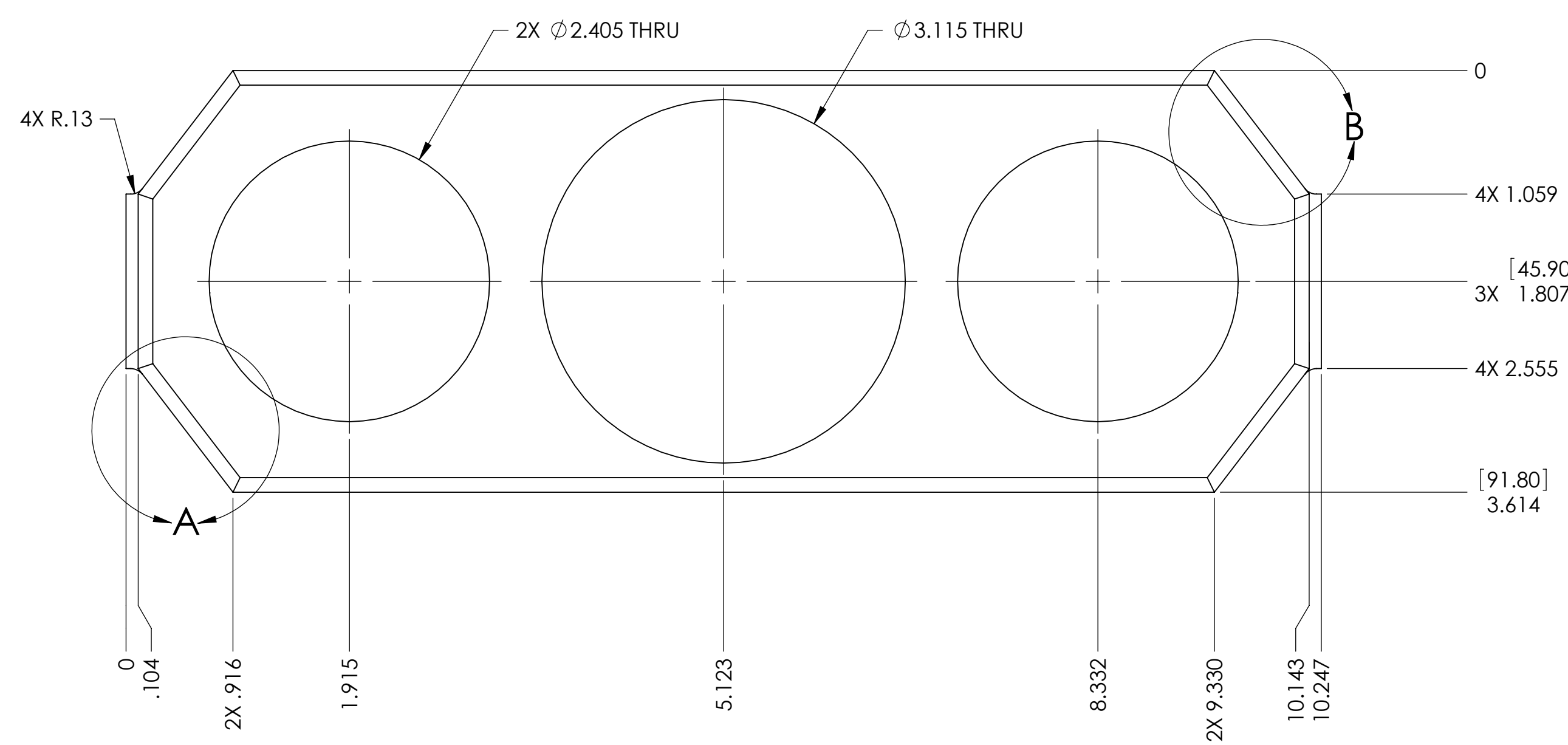
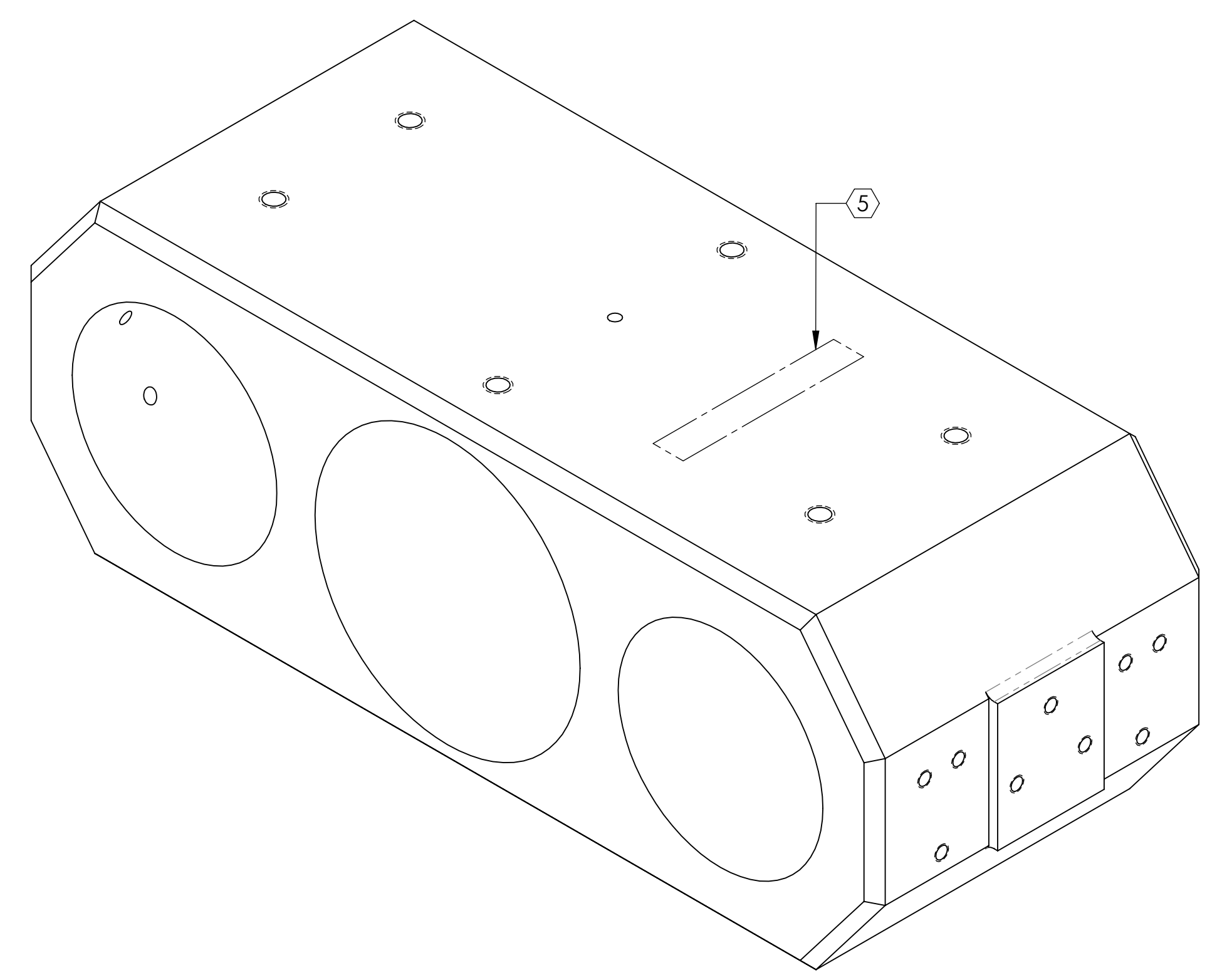
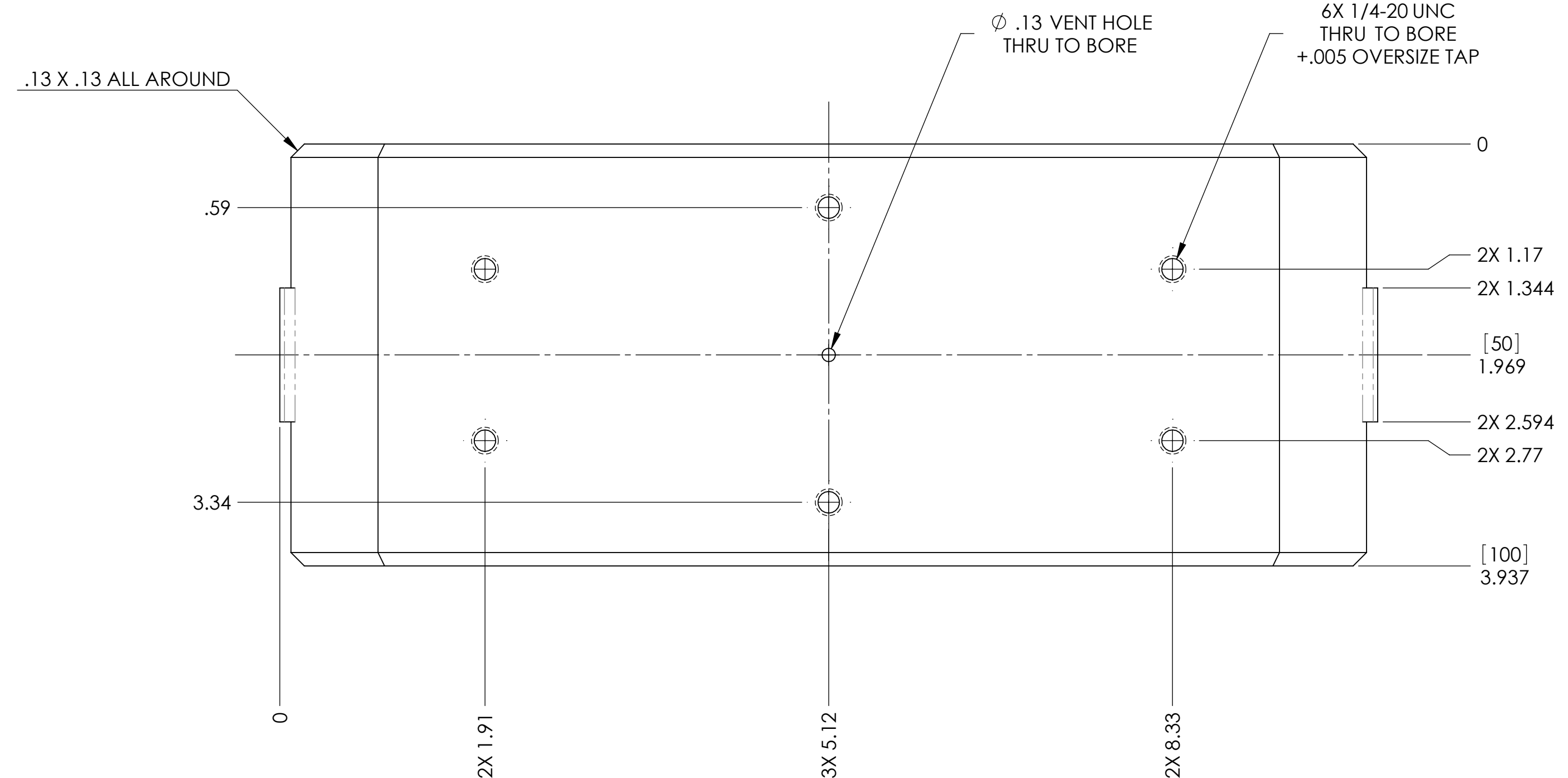


NOTES CONTINUED:
 5. SCRIBE, ENGRAVE, OR MECHANICALLY STAMP (NO INKS OR DYES) DRAWING PART NUMBER, REVISION (AND VARIANT OR TYPE IF APPLICABLE) ON NOTED SURFACE OF PART FOLLOWED ON THE NEXT LINE WITH A THREE DIGIT SERIAL NUMBER. SERIAL NUMBERS START AT 001 FOR THE FIRST ARTICLE AND PROCEED CONSECUTIVELY. USE MINIMUM 0.12" HIGH CHARACTERS, UNLESS THE SIZE OF THE PART DICTATES SMALLER CHARACTERS. A VIBRATORY TOOL MAY BE USED.
 EXAMPLE: DXXXXXX-VY, TYPE-XX, S/N XXX
 6. MACHINE ALL SURFACES TO REMOVE OXIDES AND MILL FINISH. USE OF ABRASIVE REMOVAL TECHNIQUES IS NOT ALLOWED.
 7. ALL PARTS SHALL BE MANUFACTURED IN ACCORDANCE WITH LIGO SPECIFICATION E0900364.

REV.	DATE	DCN #	DRAWING TREE #
v1	22 JUN 2009	E0900173	E080191
v2	06 JUL 2009	E0900189	E080191
v3	18 MAY 2010	E1000166	E080191



LEFT AND RIGHT SIDES

NOTES AND TOLERANCES: (UNLESS OTHERWISE SPECIFIED)	
1. INTERPRET DRAWING PER ASME Y14.5-1994.	
2. REMOVE ALL SHARP EDGES, R.02 MIN.	
3. DO NOT SCALE FROM DRAWING.	
4. ALL MACHINING FLUIDS SHALL BE WATER SOLUBLE AND FREE OF SULFUR, CHLORINE AND SILICONE, SUCH AS CINCINNATI MILACRON'S CIMTECH 410.	
DIMENSIONS ARE IN INCHES [MM]	
TOLERANCES:	
.XX ± .01	
.XXX ± .005	
ANGULAR ± 0.5°	
MATERIAL	304, 316 OR 302 SSSL
FINISH	32 μinch

LIGO CALIFORNIA INSTITUTE OF TECHNOLOGY
 MASSACHUSETTS INSTITUTE OF TECHNOLOGY

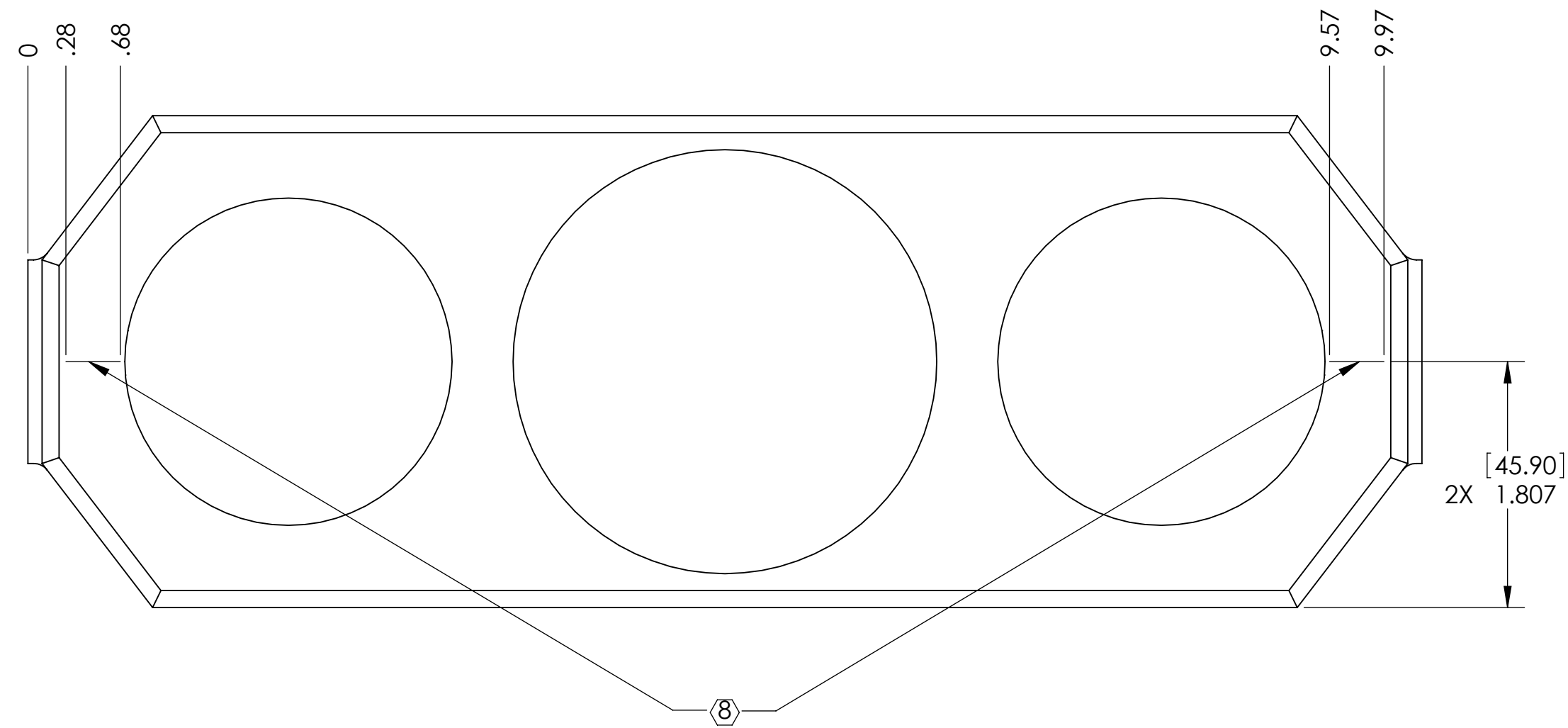
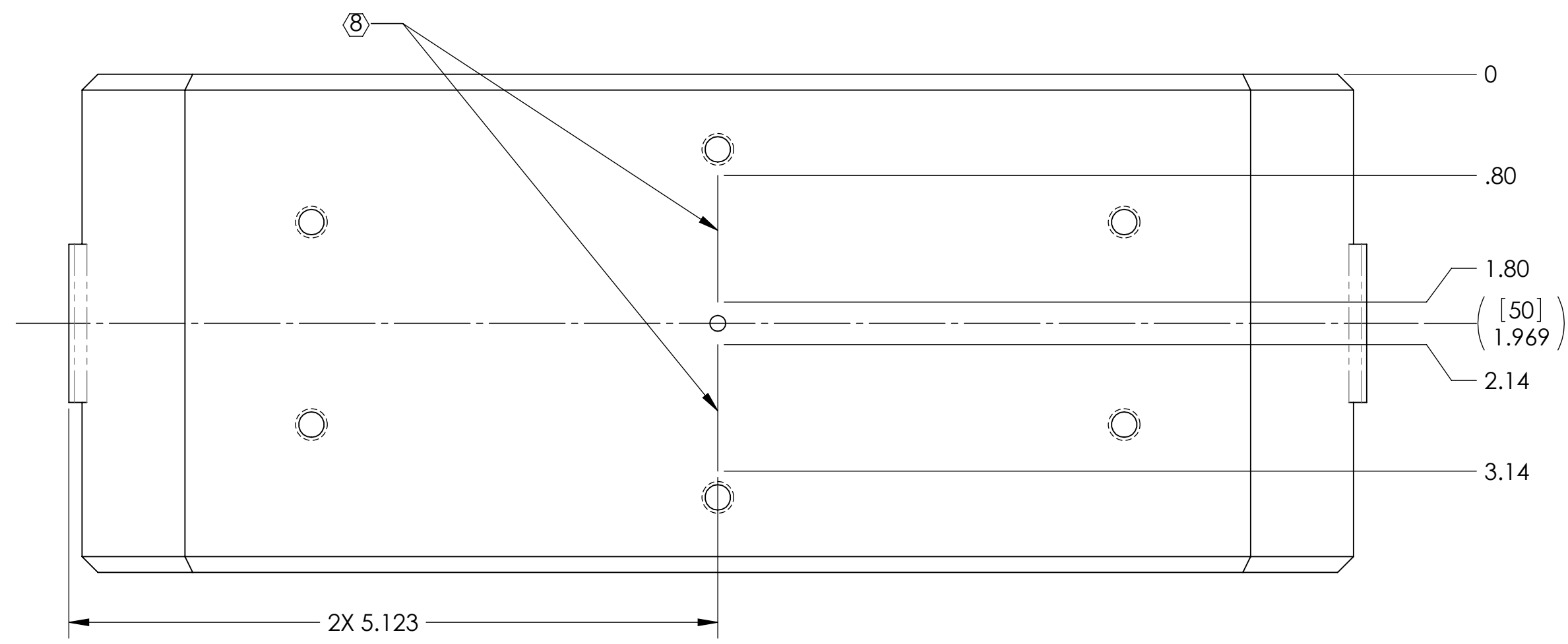
SYSTEM: **ADVANCED LIGO** SUB-SYSTEM: **SUS**

NEXT ASSY: **INTERMEDIATE MASS ASSY**

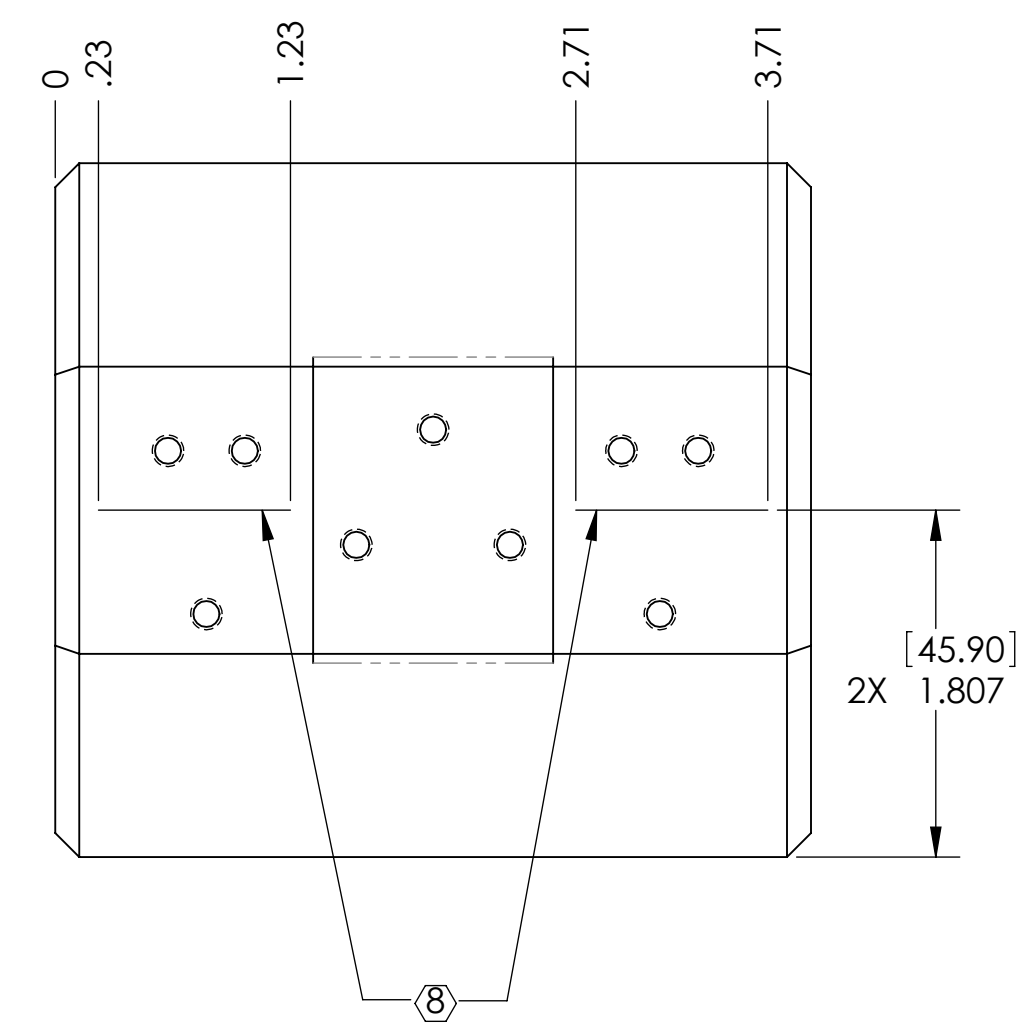
PART NAME				MAIN SECTION		REV.
DESIGNER	D. BRIDGES	02 AUG 2010	SIZE	DWG. NO.		
DRAFTER	D. BRIDGES	04 AUG 2010		D070336		v3
CHECKER	M. MEYER	04 AUG 2010				
APPROVAL			SCALE: 1:1	PROJECTION:		SHEET 1 OF 2

D070336_AdvancedLIGO_SUS_HIT3_Mach_Sections_Intermediate_Mass_Part_PDM_REV_V2-003_DRAWING_PDM_REV_V2-001

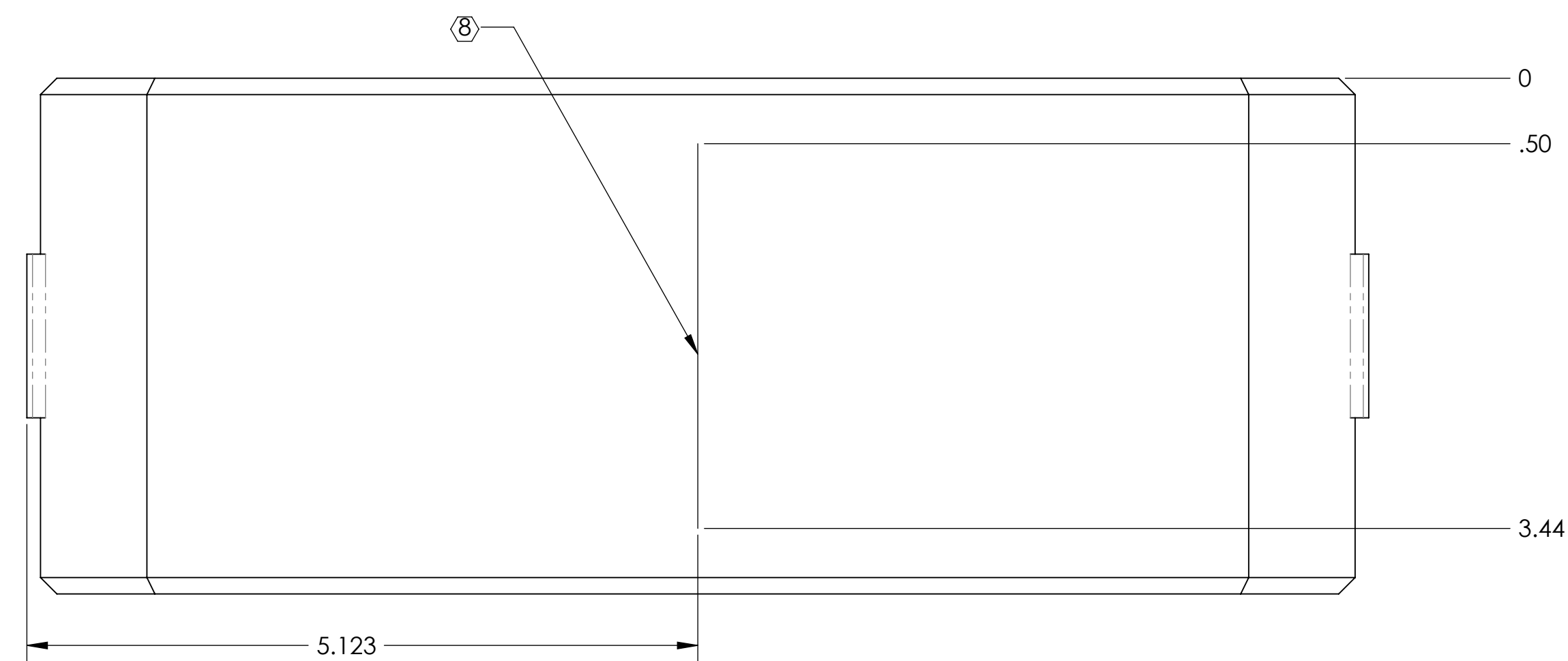
Ⓢ SCRIBE, ENGRAVE, OR MECHANICALLY STAMP (NO INKS OR DYES) AS MARKED ON NOTED SURFACE OF PART.



FRONT AND BACK SIDES



RIGHT AND LEFT SIDES



CALIFORNIA INSTITUTE OF TECHNOLOGY MASSACHUSETTS INSTITUTE OF TECHNOLOGY		REV.
SIZE	DWG. NO.	REV.
D	D070336	v3
SCALE: 1:1	PROJECTION:	SHEET 2 OF 2

D070336_Advanced_LIGO_SUS_HIT3_Mach_Section_Intermediate_Mach_Part_PDM_REV_V2-003_DRAWING_PDM_REV_V2-001