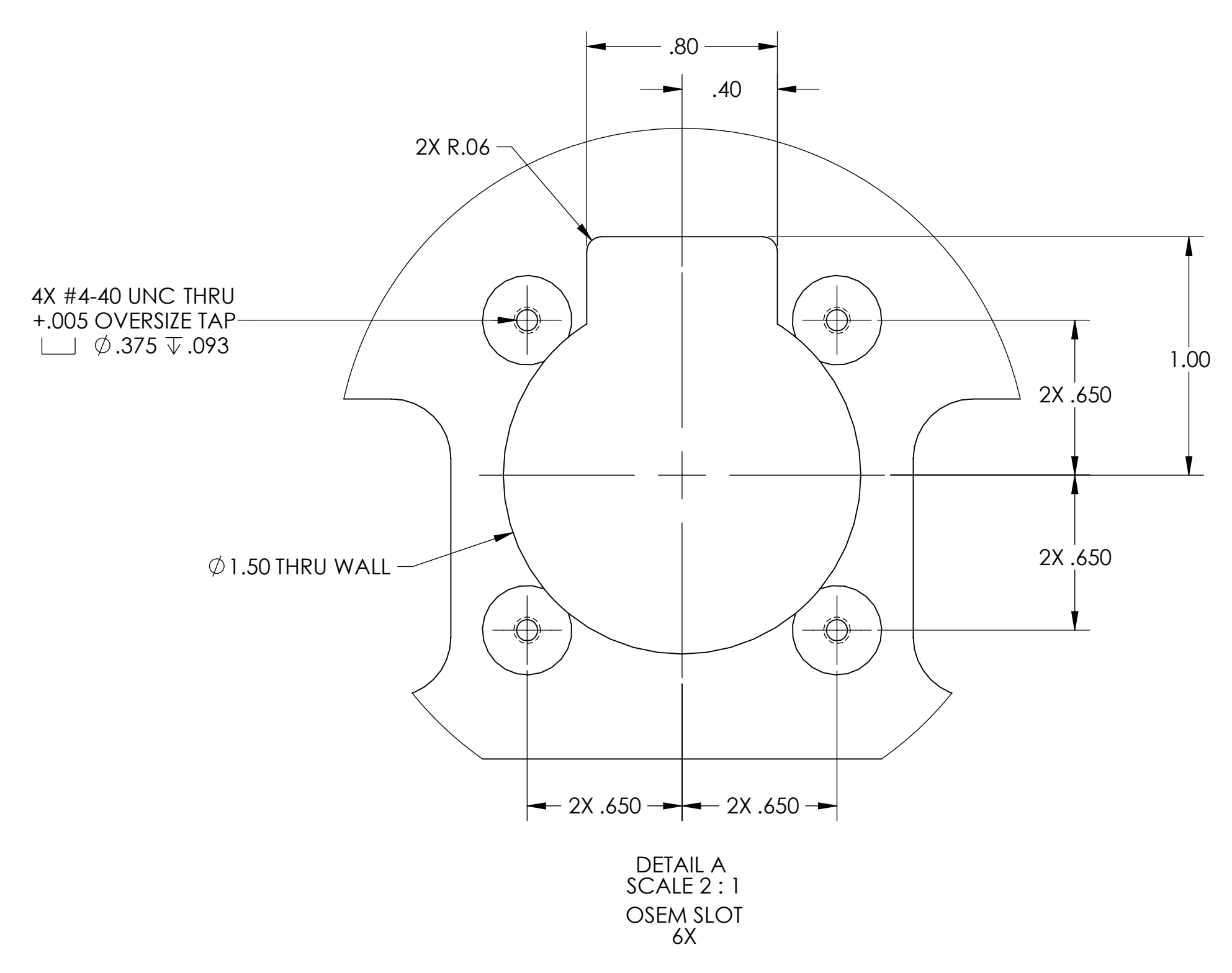
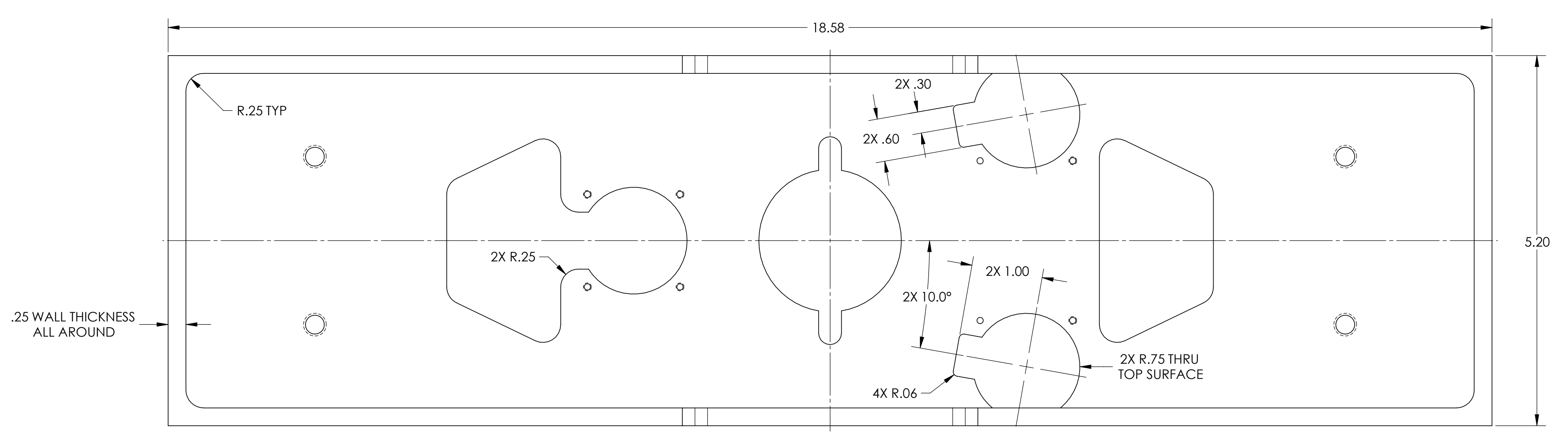
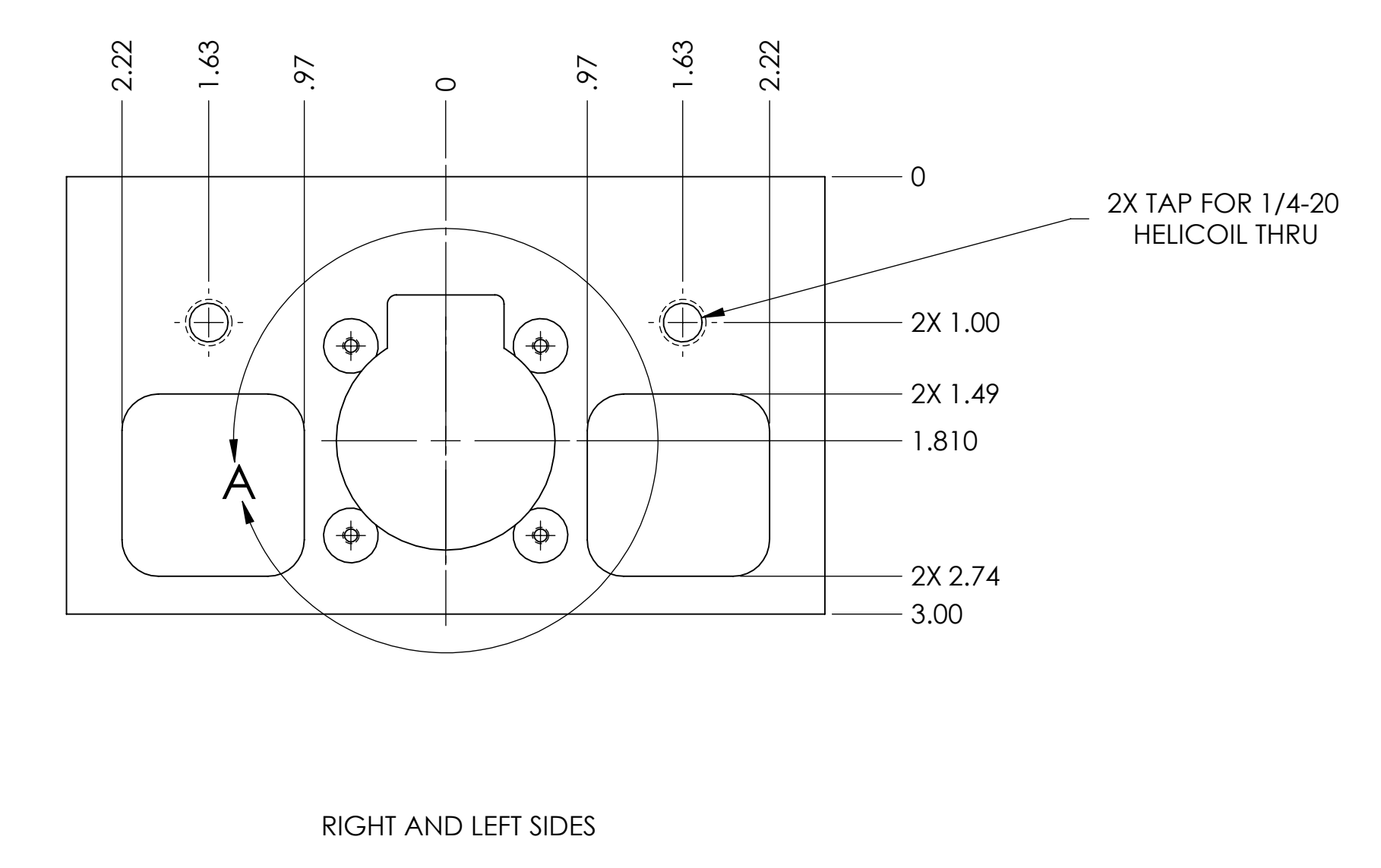
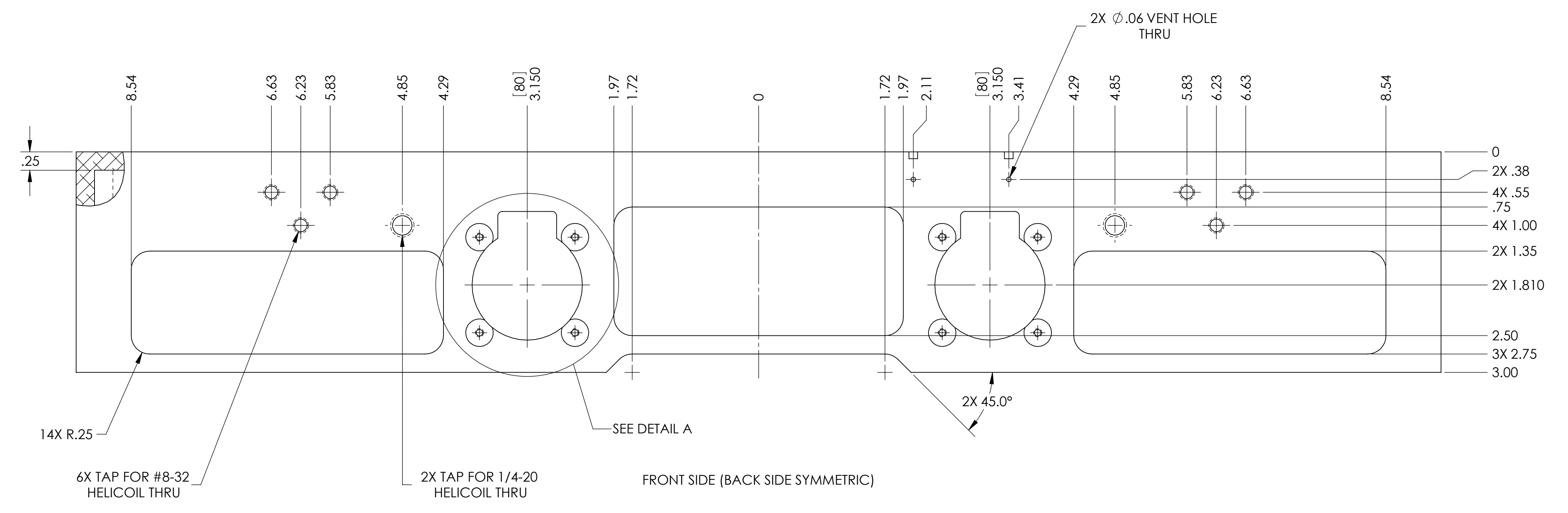
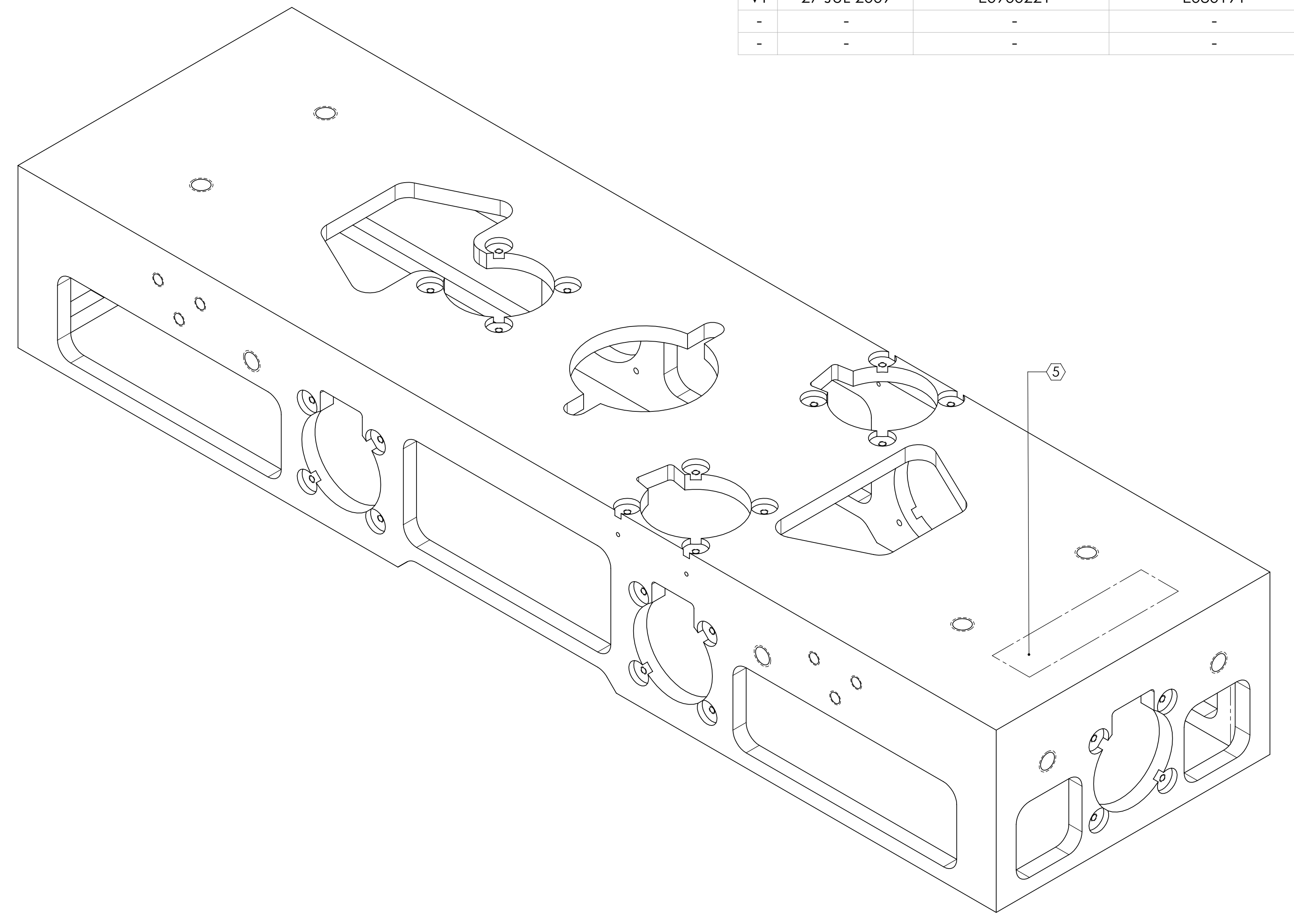
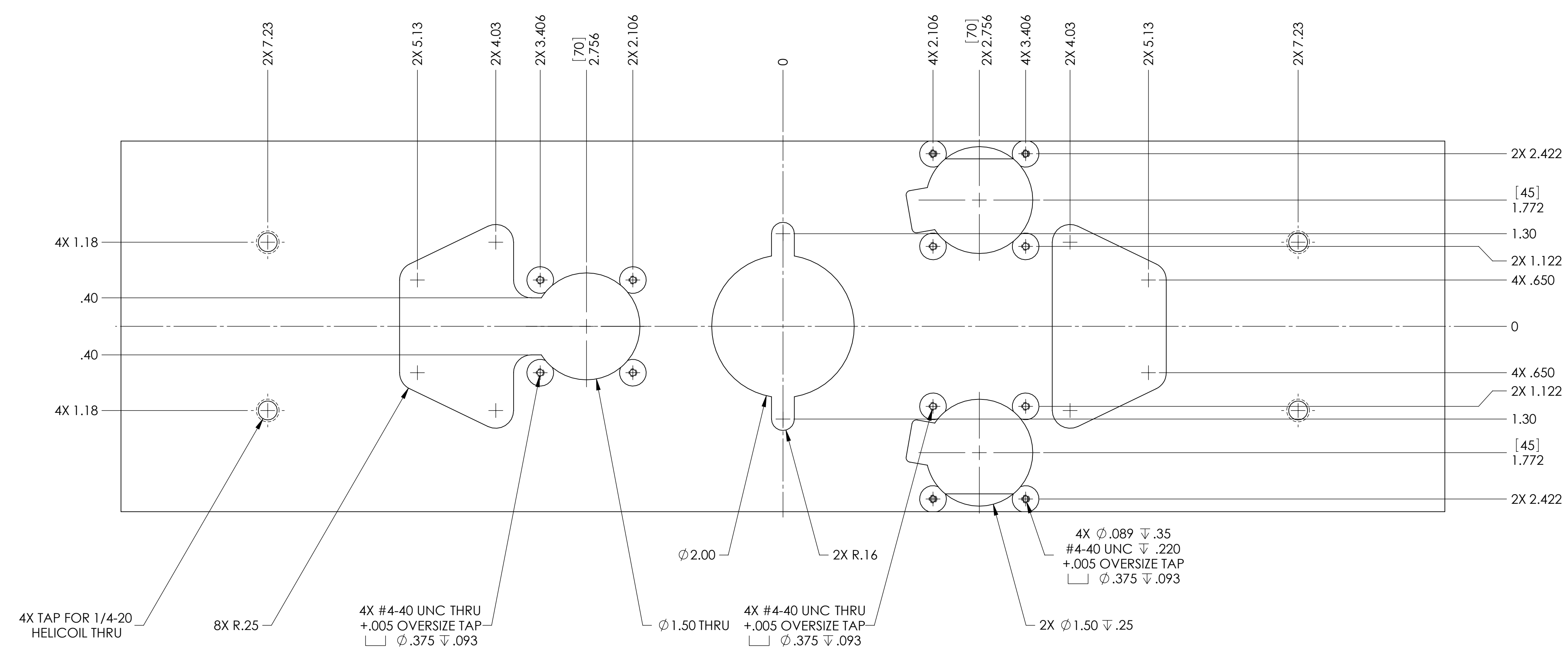


NOTES CONTINUED:
 ③ SCRIBE, ENGRAVE, OR MECHANICALLY STAMP (NO INKS OR DYES) DRAWING PART NUMBER AND REVISION ON NOTED SURFACE FOLLOWED ON THE NEXT LINE BY A THREE DIGIT SERIAL NUMBER. SERIAL NUMBERS START AT 001 FOR THE FIRST ARTICLE AND PROCEED CONSECUTIVELY. USE 27 HIGH CHARACTERS. EXAMPLE: DXXXXXX-VY, S/N 001. A VIBRATORY TOOL MAY BE USED.

REV.	DATE	DCN #	DRAWING TREE #
v1	27 JUL 2009	E0900221	E080191
-	-	-	-
-	-	-	-



DIMENSIONS ARE IN INCHES [MM]		NOTES AND TOLERANCES: (UNLESS OTHERWISE SPECIFIED)		CALIFORNIA INSTITUTE OF TECHNOLOGY MASSACHUSETTS INSTITUTE OF TECHNOLOGY		PART NAME	
TOLERANCES: .XX ± .01 .XXX ± .005		1. INTERPRET DRAWING PER ASME Y14.5-1994. 2. REMOVE ALL SHARP EDGES, R.02 MIN. 3. DO NOT SCALE FROM DRAWING. 4. ALL MACHINING FLUIDS SHALL BE WATER SOLUBLE AND FREE OF SULFUR, CHLORINE AND SILICONE, SUCH AS CINCINNATI MILACRON'S CIMTECH 410.		LIGO SYSTEM		COIL HOLDER	
ANGULAR ± 0.5°		MATERIAL 6061-T6 Al		SUB-SYSTEM ADVANCED LIGO SUS		DESIGNER D. BRIDGES 27 JUL 2009	
		FINISH 32 μinch		NEXT ASSY COIL HOLDER ASSY		DRAFTER D. BRIDGES 28 JUL 2009	
						CHECKER M. MEYER 29 JUL 2009	
						APPROVAL	
						SIZE DWG. NO. E D070449	
						REV. v1	
						SCALE: 1:1 PROJECTION: SHEET 1 OF 1	