

D080001_HAM_Trim_Mass-Large-origo, PART PDM REV: X-002, DRAWING PDM REV: X-000

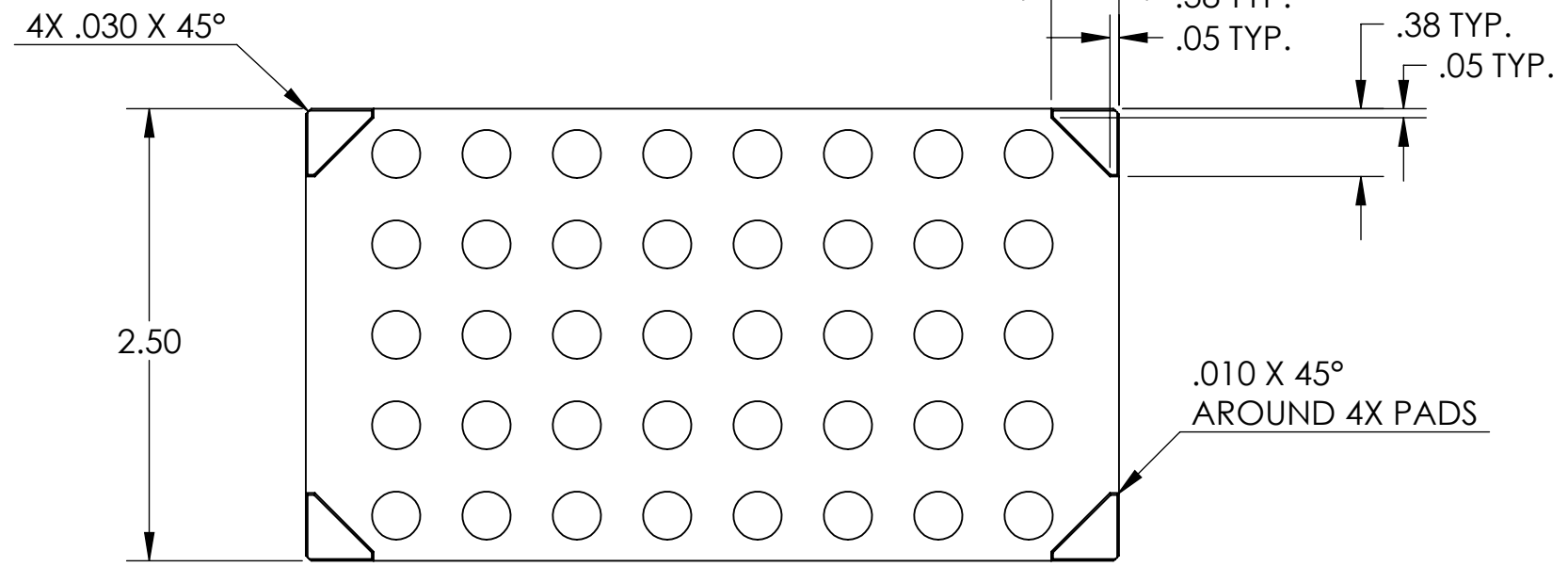
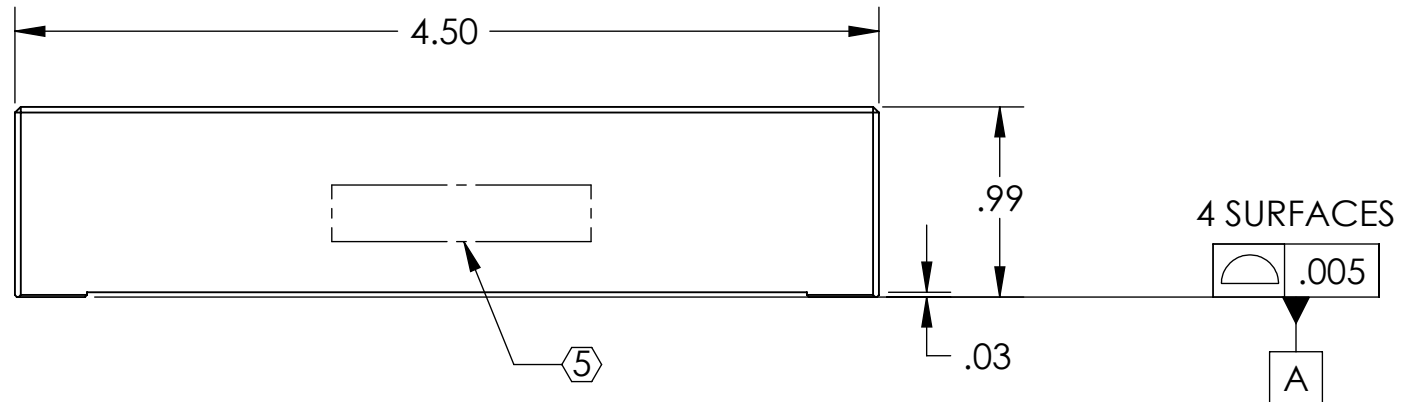
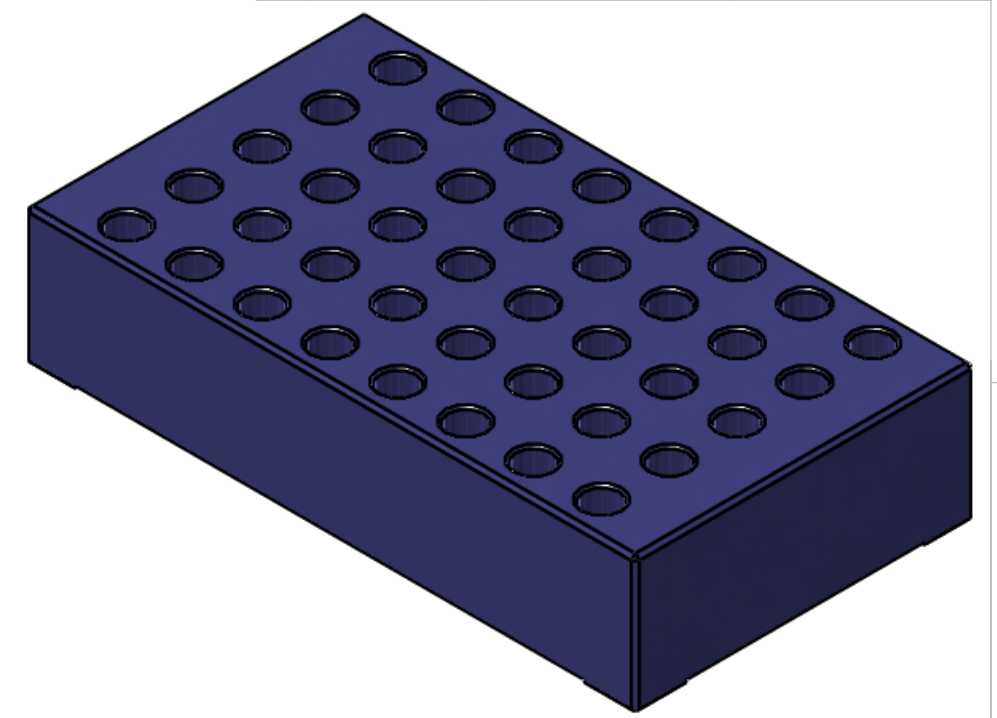
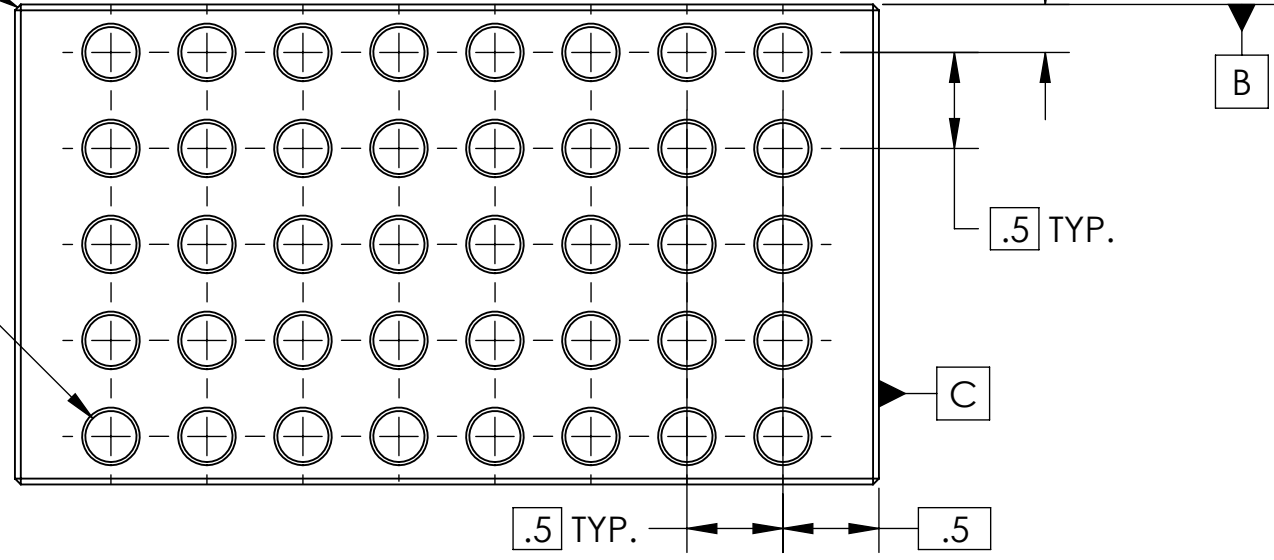
NOTES CONTINUED:
 5 SCRIBE, ENGRAVE, OR MECHANICALLY STAMP (NO INKS OR DYES) DRAWING PART NUMBER AND REVISION ON NOTED SURFACE. USE .07" HIGH CHARACTERS. EXAMPLE: DXXXXXX-VY. A VIBRATORY TOOL MAY BE USED.
 6 MACHINE ALL SURFACES TO REMOVE OXIDES AND MILL FINISH; USE OF ABRASIVE REMOVAL TECHNIQUES IS NOT ALLOWED.
 7 ALL PARTS SHALL BE MANUFACTURED IN ACCORDANCE WITH LIGO SPECIFICATION E0900364.

REV.	DATE	DCN #	DRAWING TREE #
V2	01 May 2009	-	-
-	-	-	-
-	-	-	-

.030 X 45°
 AROUND TOP FACE

40X Ø .266 THRU
 ✓ Ø .30 X 82°, NEAR SIDE

⊕	φ .008 (M)	A	B	C
---	------------	---	---	---



Mass = 1.14 lbs

NOTES AND TOLERANCES: (UNLESS OTHERWISE SPECIFIED)				LIGO CALIFORNIA INSTITUTE OF TECHNOLOGY MASSACHUSETTS INSTITUTE OF TECHNOLOGY		PART NAME	
DIMENSIONS ARE IN INCHES TOLERANCES: .XX ± .015 .XXX ± .005 ANGULAR ± 0.5°				1. INTERPRET DRAWING PER ASME Y14.5-1994. 2. REMOVE ALL SHARP EDGES, R.02 MIN. 3. DO NOT SCALE FROM DRAWING. 4. ALL MACHINING FLUIDS SHALL BE FULLY SYNTHETIC, FULLY WATER SOLUBLE AND FREE OF SULFUR, CHLORINE AND SILICONE.		HAM Trim Mass, Large	
MATERIAL 304 SS				FINISH 63 μinch		NEXT ASSY D0900124	
SYSTEM ADVANCED LIGO				SUB-SYSTEM SEI		DESIGNER D. Clark 17 Dec 2007	
DIMENSIONS ARE IN INCHES				FINISH 63 μinch		DRAPER A. Stein 01 May 2009	
MATERIAL 304 SS				FINISH 63 μinch		CHECKER A. Stein 01 May 2009	
DIMENSIONS ARE IN INCHES				FINISH 63 μinch		APPROVAL A. Stein 01 May 2009	
DIMENSIONS ARE IN INCHES				FINISH 63 μinch		SIZE DWG. NO. B D080001	
DIMENSIONS ARE IN INCHES				FINISH 63 μinch		REV. v2	
DIMENSIONS ARE IN INCHES				FINISH 63 μinch		SCALE: 1:1 PROJECTION:	
DIMENSIONS ARE IN INCHES				FINISH 63 μinch		SHEET 1 OF 1	