

4

3

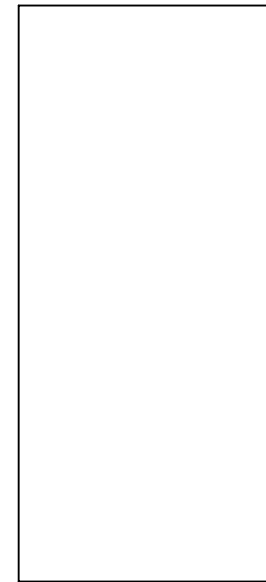
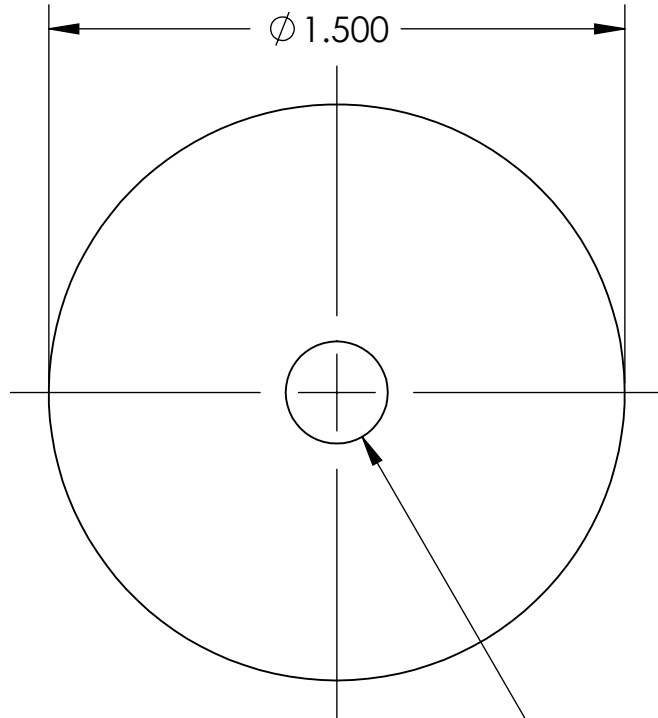
2

1

NOTES CONTINUED:

Ⓢ BAG ALL ITEMS INDIVIDUALLY AND MARK OR TAG EACH BAG WITH DRAWING NUMBER, REVISION, AND QUANTITY. EXAMPLE: DXXXXXX-VY, QTY: 1

REV.	DATE	DCN #	DRAWING TREE #
v1	14 JUL 2009	E0900198	-
-	-	-	-
-	-	-	-



Ø .266 THRU

.669

NOTES AND TOLERANCES: (UNLESS OTHERWISE SPECIFIED)

DIMENSIONS ARE IN INCHES

TOLERANCES:

.XX ± .01
.XXX ± .005

ANGULAR ± 0.5°

1. INTERPRET DRAWING PER ASME Y14.5-1994.
2. REMOVE ALL SHARP EDGES, R.02 MIN.
3. DO NOT SCALE FROM DRAWING.
4. ALL MACHINING FLUIDS SHALL BE WATER SOLUBLE AND FREE OF SULFUR, CHLORINE AND SILICONE, SUCH AS CINCINNATI MILACRON'S CIMTECH 410.

MATERIAL	304, 316 OR 302 SSSL	FINISH	32 μinch
----------	----------------------	--------	----------



CALIFORNIA INSTITUTE OF TECHNOLOGY
MASSACHUSETTS INSTITUTE OF TECHNOLOGY

SYSTEM: **ADVANCED LIGO** SUB-SYSTEM: **SUS**

NEXT ASSY: **MULTIPLE ASSYS**

PART NAME

ADDITIONAL MASS DISK, 150g

DESIGNER	D. BRIDGES	14 JUL 2009	SIZE	DWG. NO.	REV.
DRAFTER	D. BRIDGES	14 JUL 2009	A	D080263	v1
CHECKER	M. MEYER	15 JUL 2009	APPROVAL	SCALE: 2:1	PROJECTION:
				SHEET 1 OF 1	

4

3

2

1