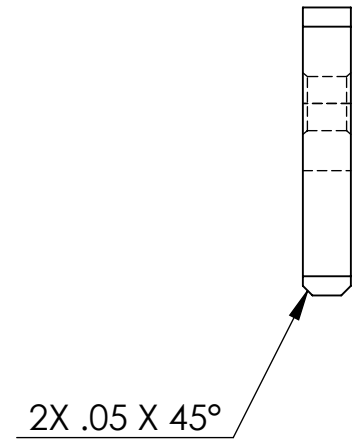
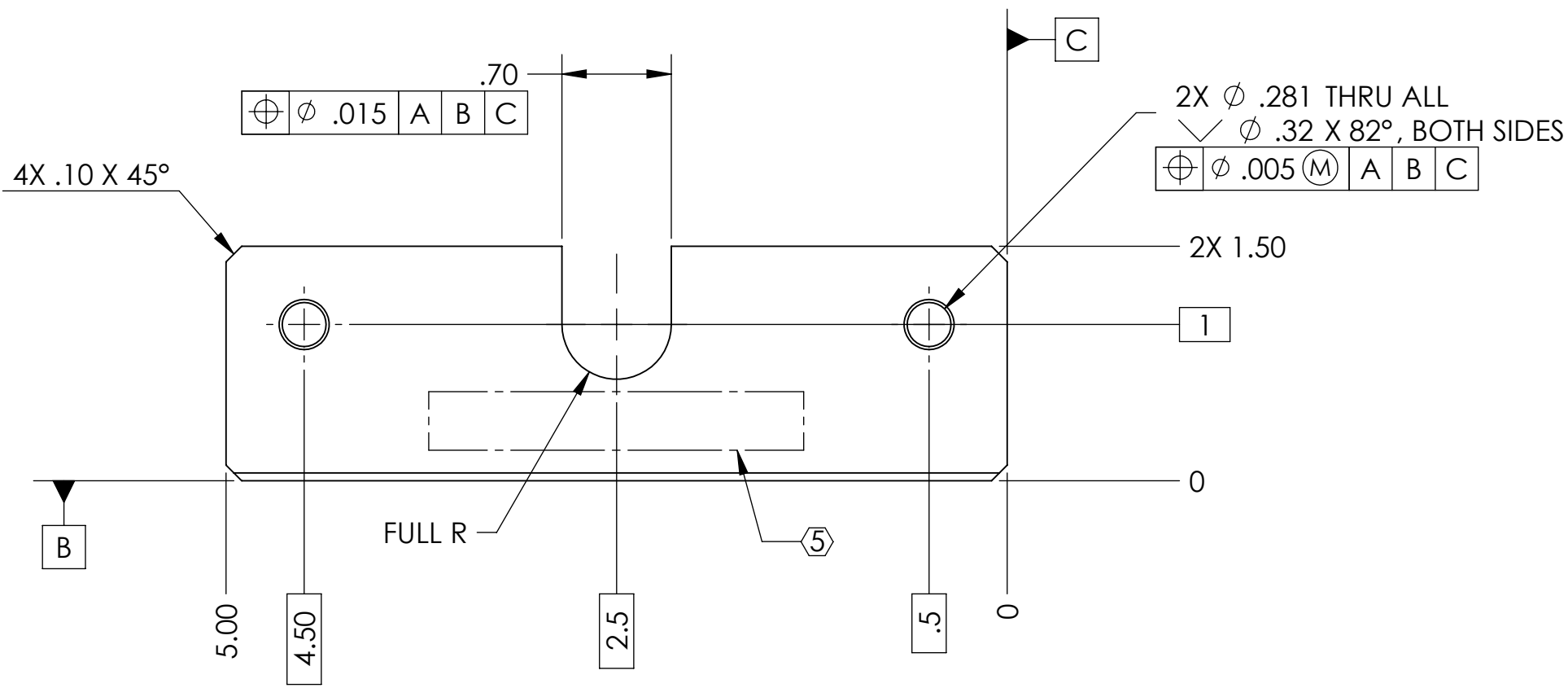
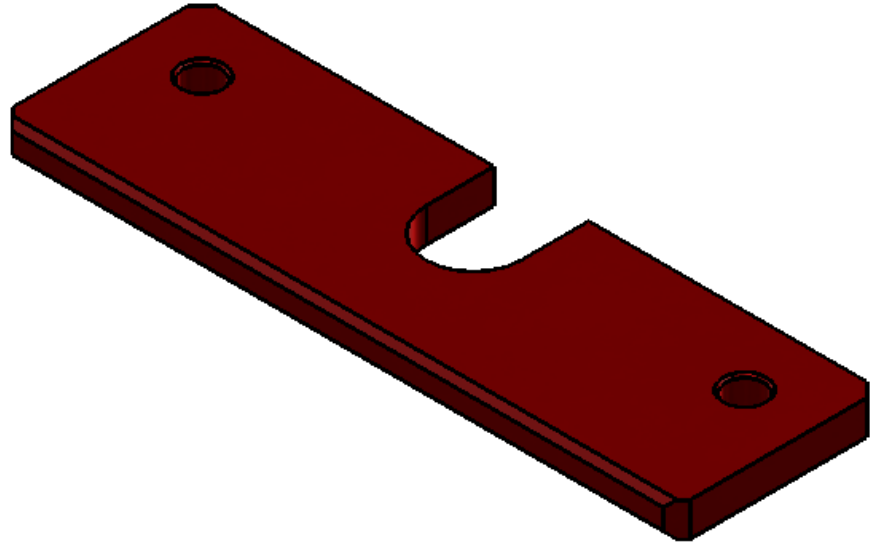
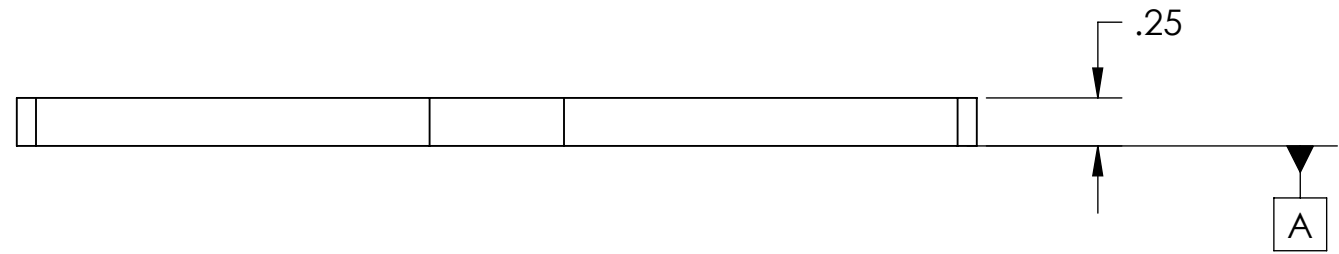


8 7 6 5 4 3 2 1

NOTES CONTINUED:
 5 SCRIBE, ENGRAVE, OR MECHANICALLY STAMP (NO INKS OR DYES) DRAWING PART NUMBER AND REVISION ON NOTED SURFACE FOLLOWED ON THE NEXT LINE BY A THREE DIGIT SERIAL NUMBER. SERIAL NUMBERS START AT 001 FOR THE FIRST ARTICLE AND PROCEED CONSECUTIVELY. USE .07" HIGH CHARACTERS. EXAMPLE: DXXXXXX-VY, S/N 001. A VIBRATORY TOOL MAY BE USED.

REV.	DATE	DCN #	DRAWING TREE #
V1	30 Apr 2009	-	-
-	-	-	-
-	-	-	-

POST-MANUFACTURING NOTES:
 P1. CLEAN TO LIGO STANDARDS, CLASS B (PER E0900047 AND E960022).



Mass = 0.16 lbs

NOTES AND TOLERANCES: (UNLESS OTHERWISE SPECIFIED)	
DIMENSIONS ARE IN INCHES	
TOLERANCES: .XX ± .015 .XXX ± .005 ANGULAR ± 0.5°	
1. INTERPRET DRAWING PER ASME Y14.5-1994. 2. REMOVE ALL SHARP EDGES, R.02 MIN. 3. DO NOT SCALE FROM DRAWING. 4. ALL MACHINING FLUIDS SHALL BE WATER SOLUBLE AND FREE OF SULFUR, CHLORINE AND SILICONE, SUCH AS CINCINNATI MILACRON'S CIMTECH 410.	
MATERIAL 6061-T6 Al	FINISH 63 μinch

CALIFORNIA INSTITUTE OF TECHNOLOGY MASSACHUSETTS INSTITUTE OF TECHNOLOGY		PART NAME Locating Bar, Horiz GS-13 Shelf, HAM ISI	
SYSTEM ADVANCED LIGO	SUB-SYSTEM SEI	DESIGNER astein	30 Apr 2009
NEXT ASSY D0900335	CHECKER astein	30 Apr 2009	SIZE DWG. NO. B D0900832
APPROVAL astein		30 Apr 2009	REV. v1
SCALE: 1:1		PROJECTION:	SHEET 1 OF 1

D0900832_Locating_Bar-Horiz_GS-13_Shelf-HAM_ISI, PART PDM REV: X-003, DRAWING PDM REV: X-002

8 7 6 5 4 3 2 1