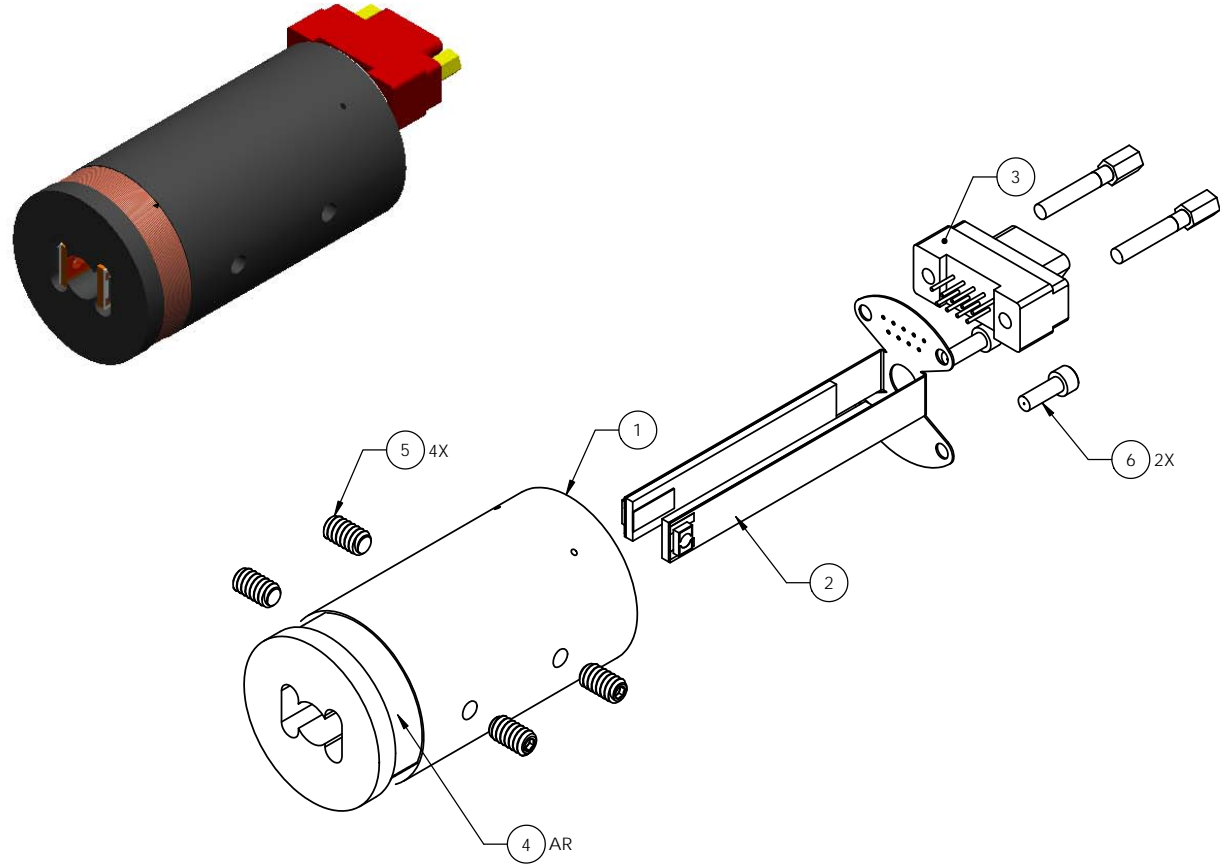


NOTES AND TOLERANCES: (UNLESS OTHERWISE SPECIFIED)

1. INTERPRET DRAWING PER ASME Y14.5-1994.
2. REMOVE ALL SHARP EDGES, R.02 MIN.
3. DO NOT SCALE FROM DRAWING.
4. ALL MACHINING FLUIDS SHALL BE WATER SOLUBLE AND FREE OF SULFUR, CHLORINE AND SILICONE, SUCH AS CINCINNATI MILACRON'S CIMTECH 410.
5. ASSEMBLE PER E0900168, ADVANCED LIGO OSEM ASSEMBLY SPECIFICATION.
6. TORQUE SET SCREWS PER T1000240, AOSEM SET SCREW TORQUE SPECIFICATION.
7. A FULL TECHNICAL DESCRIPTION OF THE FLEXI-CIRCUIT BOARD AND STIFFENER DESIGN MAY BE FOUND IN T1000115, AOSEM FLEXIBLE CIRCUIT BOARD DESIGN DETAILS.

REV.	DATE	DCN #	DRAWING TREE #
v1	29 OCT 2009	E0900352	
v2	28 May 2013	E1300492	
-	-	-	-



6	UC COMPONENTS C-204	SCREW, SOCKET HEAD CAP, #2-56 UNC-2A X 0.25 LONG, VENTED	300 SSSL	2	-	2
5	92158A167	#6-32 x .25" SET SCREW	AISI 316 STAINLESS, McMASTER-CARR	4	-	4
4	32 HML	32 AWG KAPTON COATED COPPER WIRE, MWS INDUSTRIES	KAPTON COATED COPPPER WIRE	AR	-	AR
3	GMR7580-9P-1BSN-MC225	GLENAIR 9 PIN CONNECTOR	316 SSSL	1	-	1
2	D0901066	OSEM FLEXI-CIRCUIT ASSEMBLY	N/A	1	-	1
1	D0901048	AOSEM HEAD	PEEK	1	-	1
ITEM NO.	PART NUMBER	DESCRIPTION	MATERIAL	QTY	SPARE	TOTAL

PARTS LIST

<p>LIGO CALIFORNIA INSTITUTE OF TECHNOLOGY MASSACHUSETTS INSTITUTE OF TECHNOLOGY</p>		PART NAME				AOSEM ASSY		
		SYSTEM	SUB-SYSTEM	DESIGNER	DATE	SIZE	DWG. NO.	REV.
MATERIAL		NEXT ASSY		DRAFTER	DATE	c	D0901065	v2
N/A		MULTIPLE ASSY		CHECKER	DATE			
FINISH				APPROVAL		SCALE: 1:1	PROJECTION:	SHEET 1 OF 1
N/A μinch								