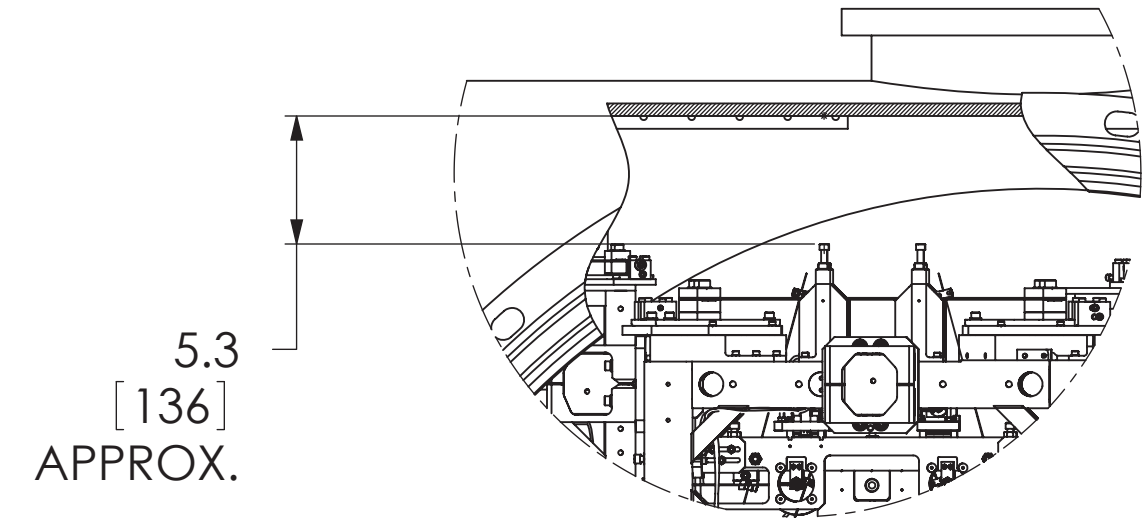
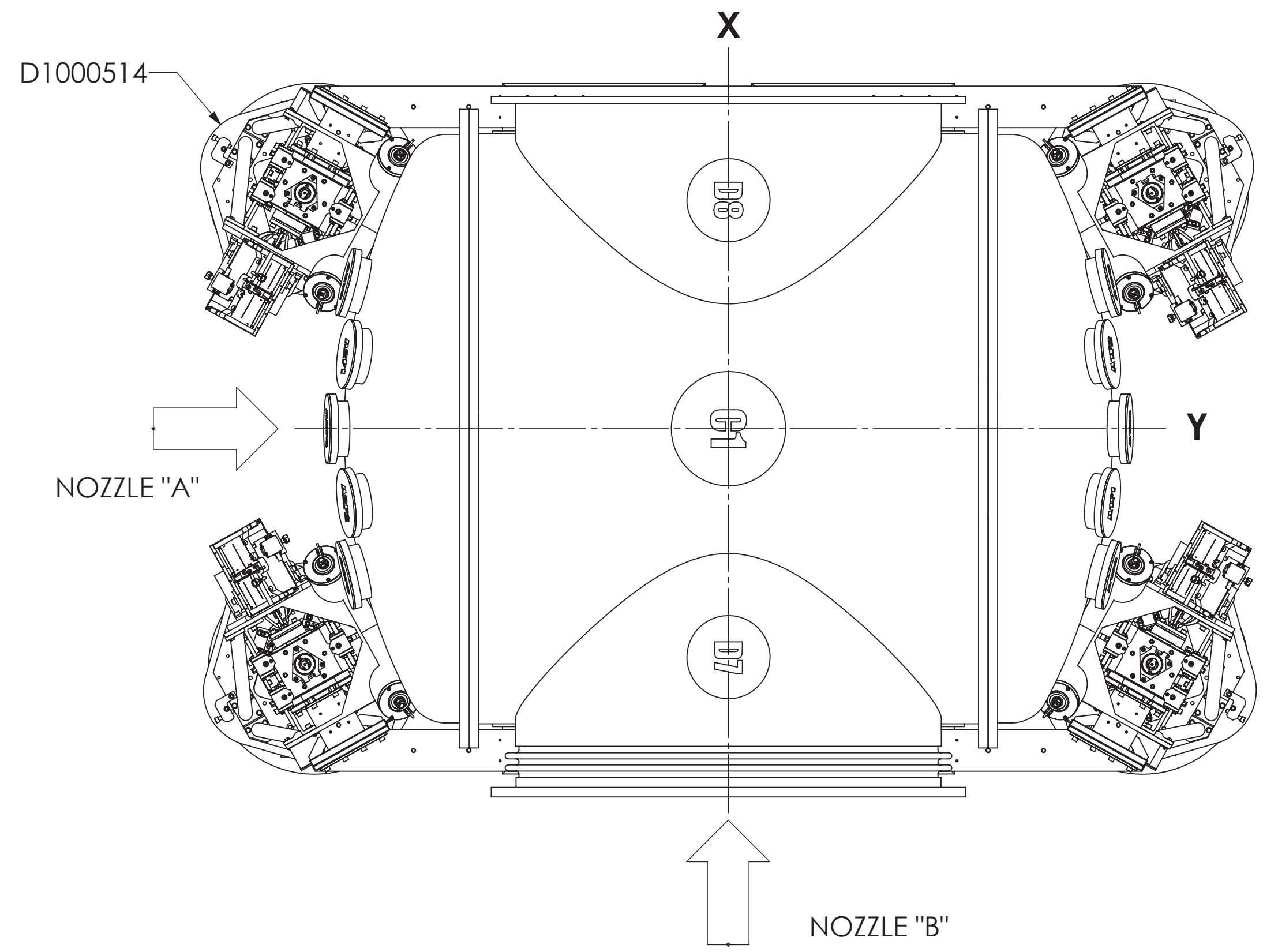


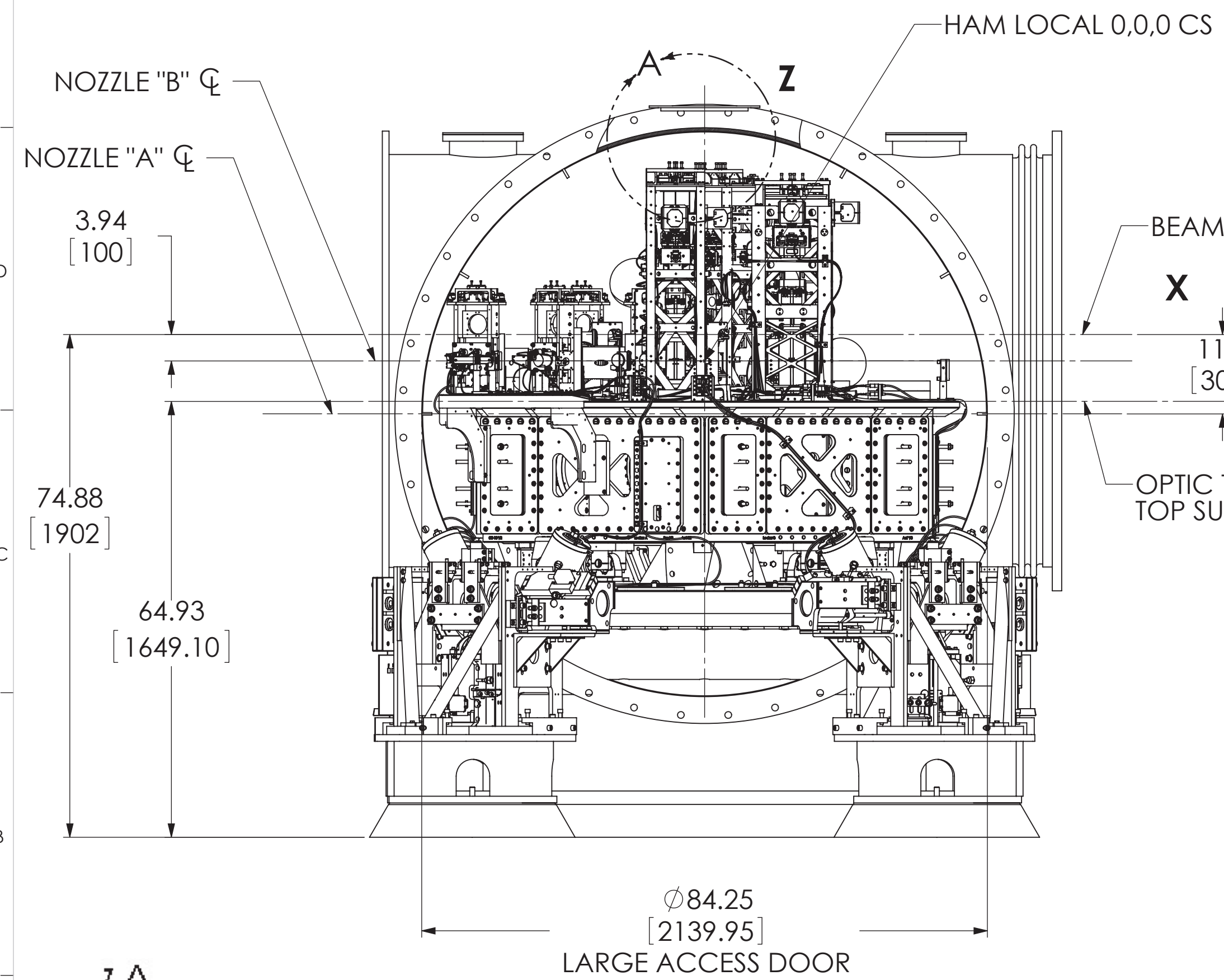
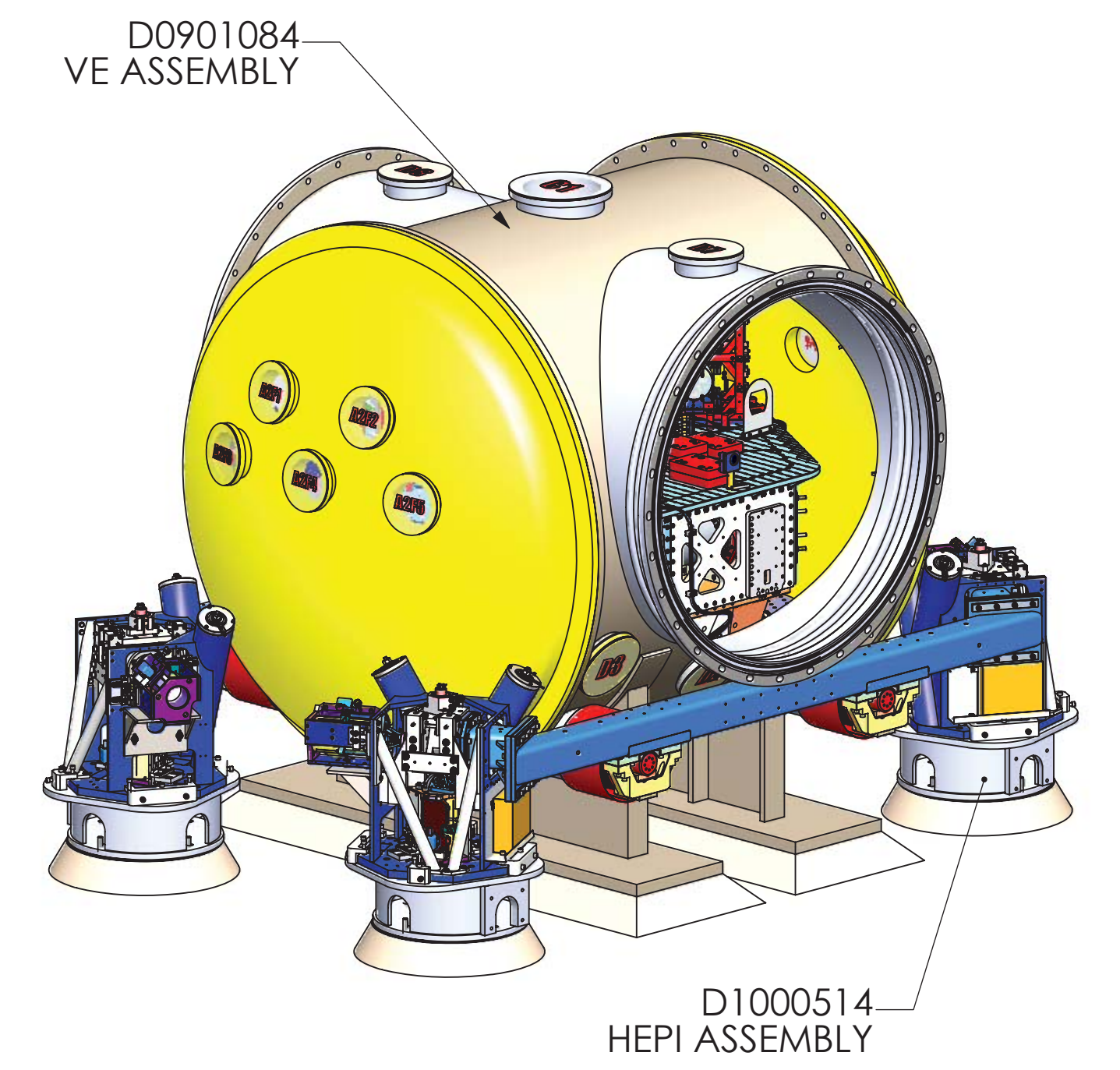
DETAIL A  
SCALE 1 : 8



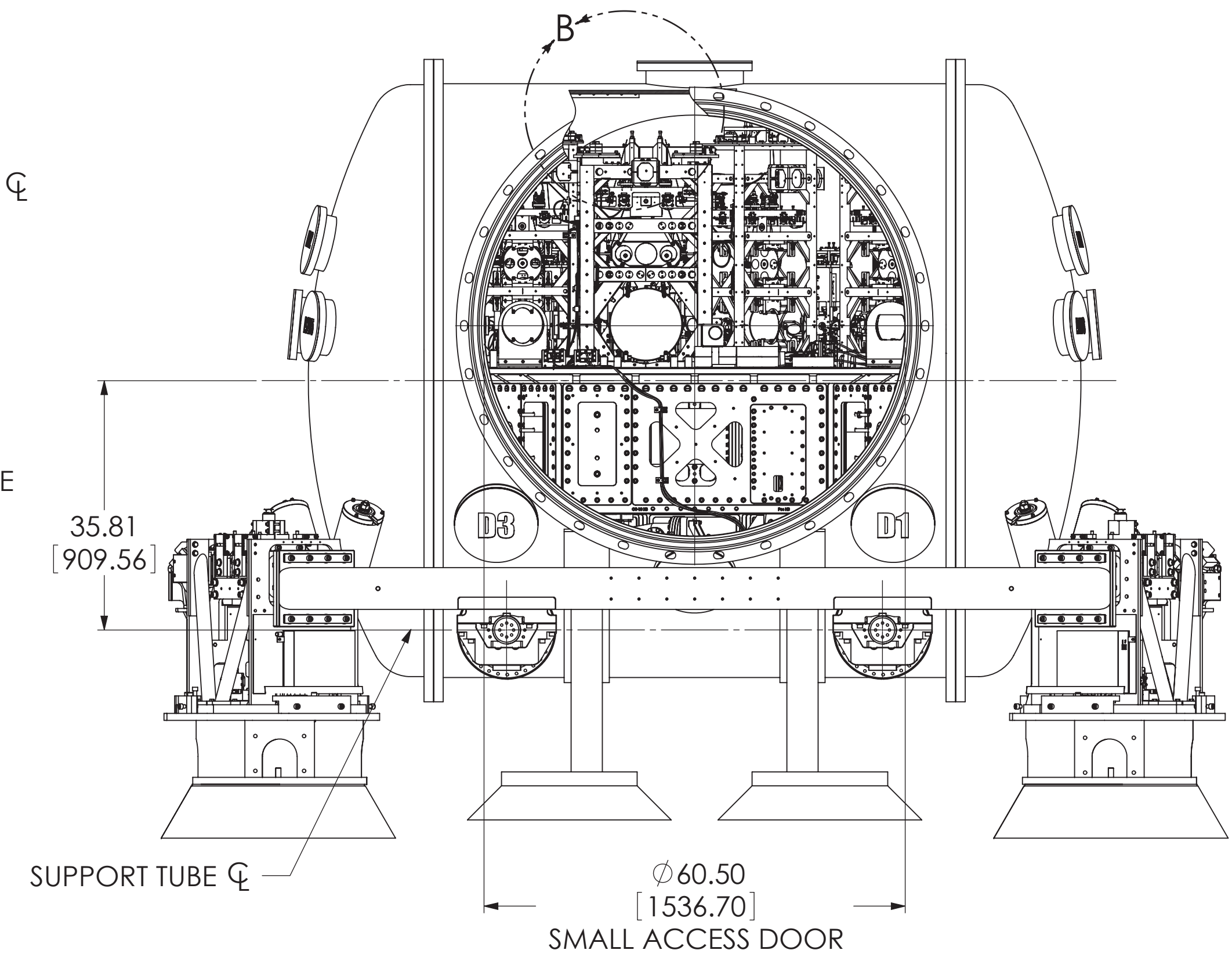
DETAIL B  
SCALE 1 : 8



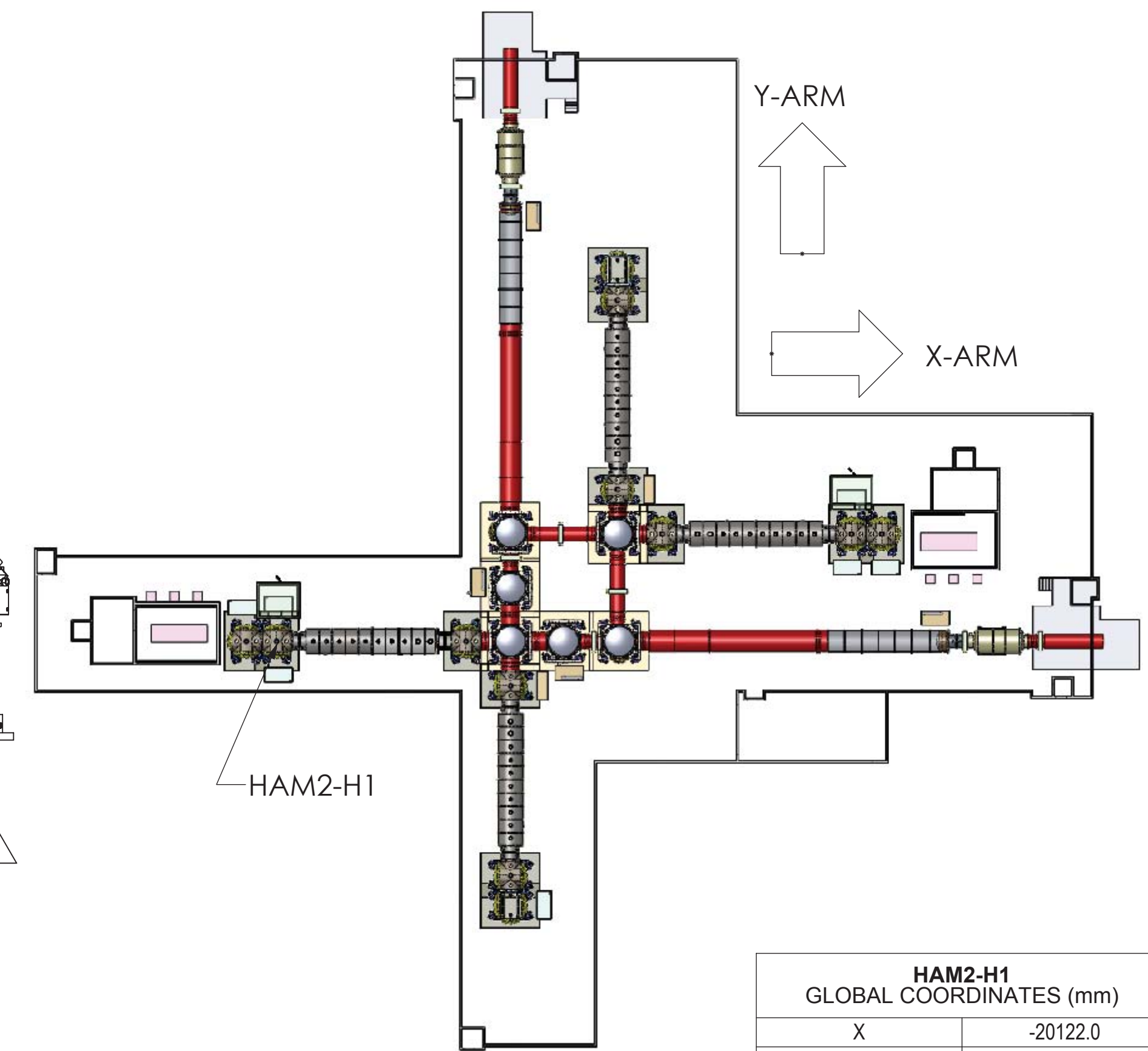
TOP VIEW



FRONT VIEW



RIGHT VIEW



| HAM2-H1<br>GLOBAL COORDINATES (mm) |          |
|------------------------------------|----------|
| X                                  | -20122.0 |
| Y                                  | 0.0      |
| Z                                  | 0.0      |



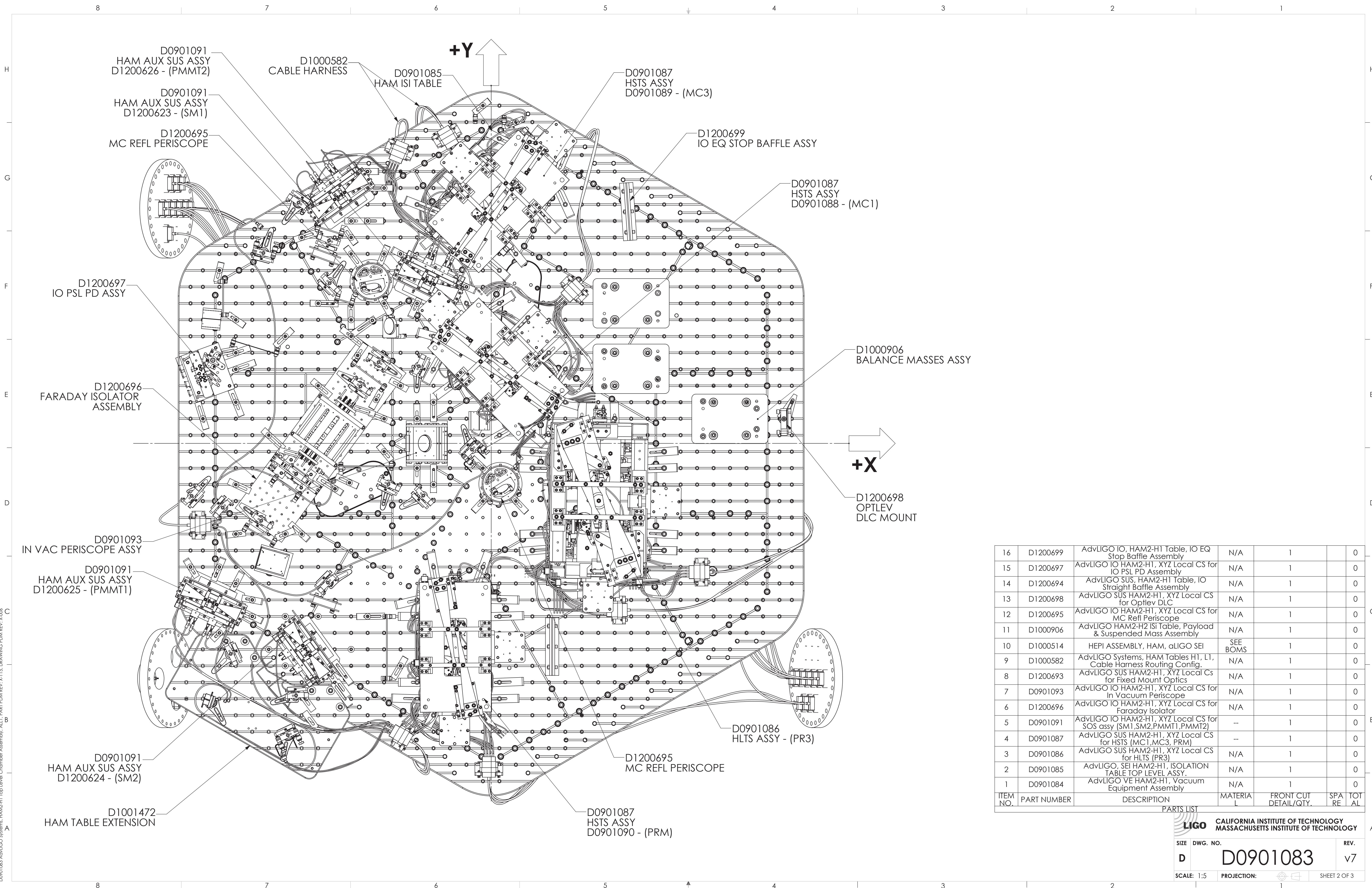
|   |               |
|---|---------------|
| NOTES AND TOLERANCES: (UNLESS OTHERWISE SPECIFIED)  |               |
| 1. INTERPRET DRAWING PER ASME Y14.5-1994.   |               |
| 2. REMOVE ALL SHARP EDGES, .005-.015, FOR MACHINED PARTS. ROUND ALL EDGES APPROXIMATELY R.02 FOR SHEET METAL PARTS. |               |
| 3. DO NOT SCALE FROM DRAWING.   |               |
| 4. ALL MACHINING FLUIDS MUST BE FULLY SYNTHETIC, FULLY WATER SOLUBLE AND FREE OF SULFUR, SILICONE, AND CHLORINE.    |               |
| MATERIAL  | FINISH        |
| --  | -- $\mu$ inch |

|  |            |
|--|------------|
| LIGO CALIFORNIA INSTITUTE OF TECHNOLOGY<br>MASSACHUSETTS INSTITUTE OF TECHNOLOGY |            |
| SYSTEM   | SUB-SYSTEM |
| ADVANCED LIGO  | SUS        |
| NEXT ASSY  |            |

|           |             |                                    |              |
|-----------|-------------|------------------------------------|--------------|
| PART NAME |             | HAM4-H1 TOP LEVEL CHAMBER ASSEMBLY |              |
| DESIGNER  | SIZE        | DWG. NO.                           | REV.         |
| DRAFTER   | N. CUSTARD  | D                                  | D0900365     |
| CHECKER   |             |                                    | v7           |
| APPROVAL  | SCALE: 1:16 | PROJECTION:                        | SHEET 1 OF 3 |

D0901084 Adv LIGO Systems: HAM2-H1 Top Level Chamber Assembly, ALL PART PDM REV-X:115, DRAWING PDM REV: X:005





D0901083 AdvLIGO Systems, HAM2-H1 Top Level Chamber Assembly, ALL PART PDM REV-X-115, DRAWING PDM REV-X-005

| ITEM NO.   | PART NUMBER | DESCRIPTION  | MATERIAL | FRONT CUT DETAIL/QTY. | SPA RE | TOT AL |
|------------|-------------|--|----------|-----------------------|--------|--------|
| 16         | D1200699    | AdvLIGO IO, HAM2-H1 Table, IO EQ Stop Baffle Assembly                  | N/A      | 1                     |        | 0      |
| 15         | D1200697    | AdvLIGO IO HAM2-H1, XYZ Local CS for IO PSL PD Assembly                | N/A      | 1                     |        | 0      |
| 14         | D1200694    | AdvLIGO SUS, HAM2-H1 Table, IO Straight Baffle Assembly                | N/A      | 1                     |        | 0      |
| 13         | D1200698    | AdvLIGO SUS HAM2-H1, XYZ Local CS for Optlev DLC                       | N/A      | 1                     |        | 0      |
| 12         | D1200695    | AdvLIGO IO HAM2-H1, XYZ Local CS for MC Refl Periscope                 | N/A      | 1                     |        | 0      |
| 11         | D1000906    | AdvLIGO HAM2-H2 ISI Table, Payload & Suspended Mass Assembly           | N/A      | 1                     |        | 0      |
| 10         | D1000514    | HEPI ASSEMBLY, HAM, aLIGO SEI  | SEE BOMS | 1                     |        | 0      |
| 9          | D1000582    | AdvLIGO Systems, HAM Tables H1, L1, Cable Harness Routing Config.      | N/A      | 1                     |        | 0      |
| 8          | D1200693    | AdvLIGO SUS HAM2-H1, XYZ Local Cs for Fixed Mount Optics               | N/A      | 1                     |        | 0      |
| 7          | D0901093    | AdvLIGO IO HAM2-H1, XYZ Local CS for In Vacuum Periscope               | N/A      | 1                     |        | 0      |
| 6          | D1200696    | AdvLIGO IO HAM2-H1, XYZ Local CS for Faraday Isolator                  | N/A      | 1                     |        | 0      |
| 5          | D0901091    | AdvLIGO IO HAM2-H1, XYZ Local CS for SOS assy (SM1, SM2, PMMT1, PMMT2) | --       | 1                     |        | 0      |
| 4          | D0901087    | AdvLIGO SUS HAM2-H1, XYZ Local CS for HSTS (MC1, MC3, PRM)             | --       | 1                     |        | 0      |
| 3          | D0901086    | AdvLIGO SUS HAM2-H1, XYZ Local CS for HLTS (PR3)                       | N/A      | 1                     |        | 0      |
| 2          | D0901085    | AdvLIGO, SEI HAM2-H1, ISOLATION TABLE TOP LEVEL ASSY.                  | N/A      | 1                     |        | 0      |
| 1          | D0901084    | AdvLIGO VE HAM2-H1, Vacuum Equipment Assembly                          | N/A      | 1                     |        | 0      |
| PARTS LIST |             |  |          |                       |        |        |

CALIFORNIA INSTITUTE OF TECHNOLOGY  
 MASSACHUSETTS INSTITUTE OF TECHNOLOGY

SIZE DWG. NO. **D** **D0901083** REV. **v7**

SCALE: 1:5 PROJECTION: SHEET 2 OF 3



8

7

6

5

4

3

2

1

H

H

G

G

F

F

E

E

D

D

C

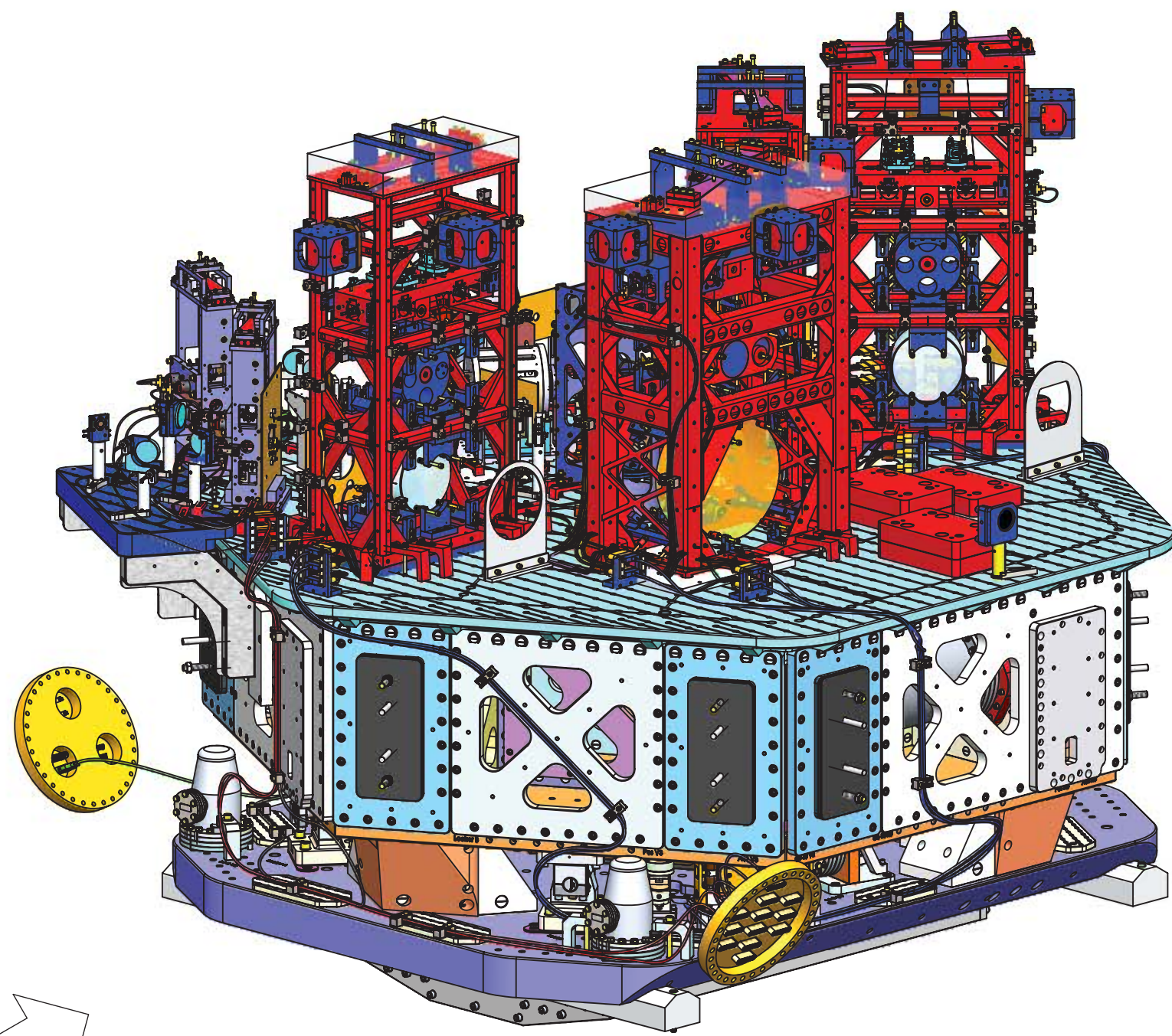
C

B

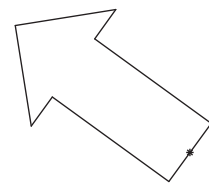
B

A

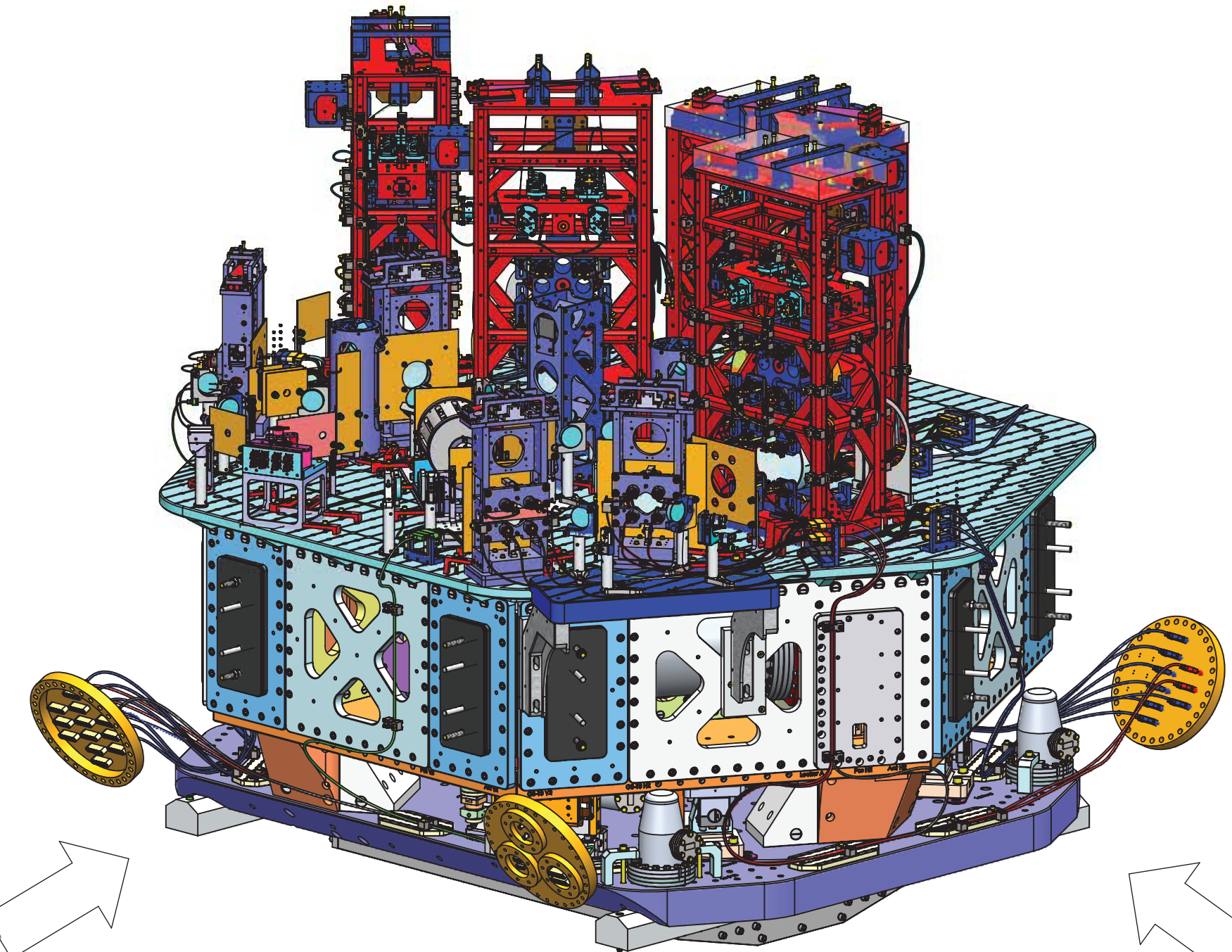
A



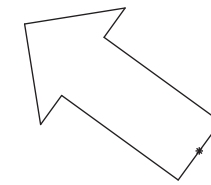
FRONT VIEW



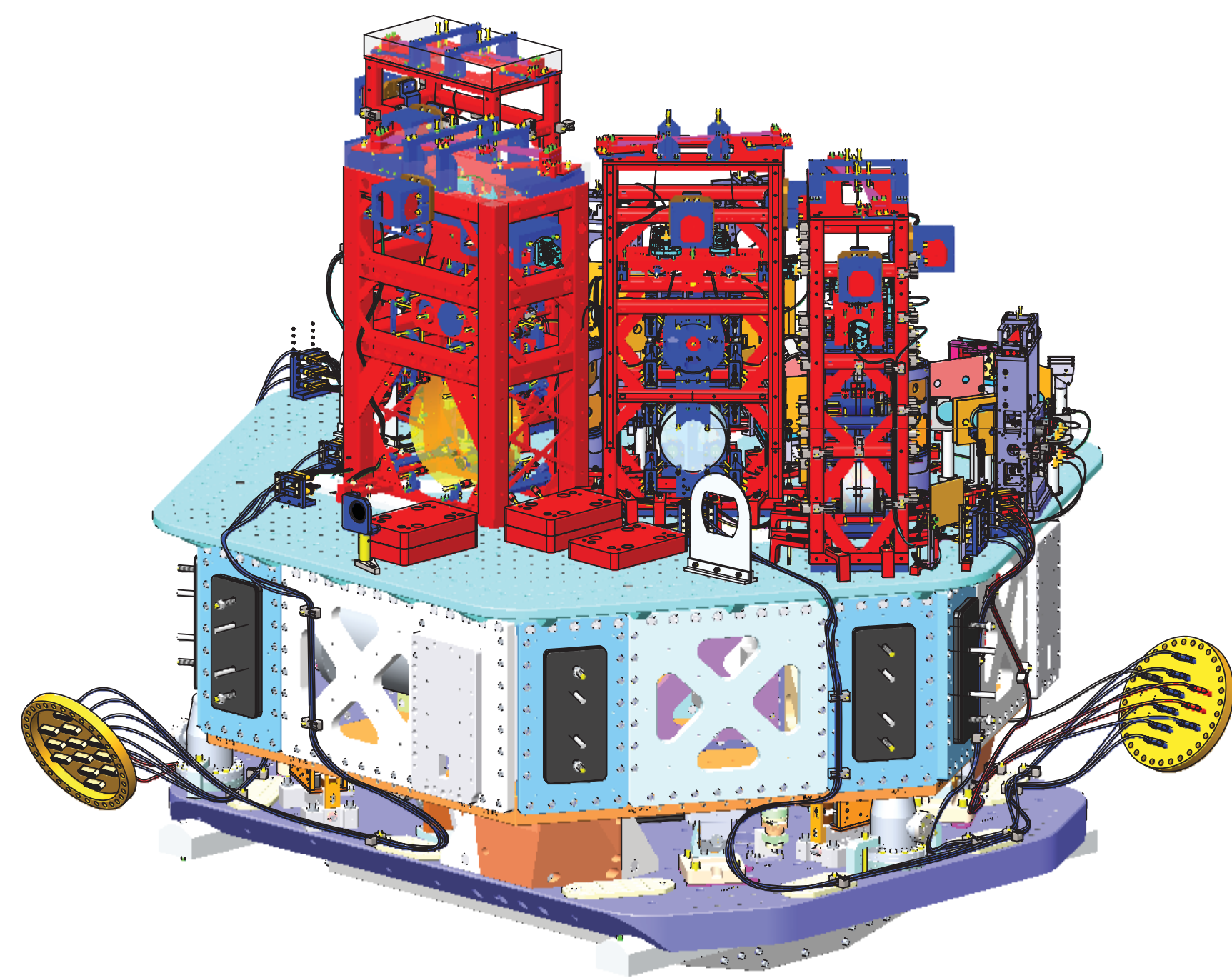
RIGHT SIDE VIEW



LEFT SIDE VIEW



FRONT SIDE VIEW



|   |             |              |
|---|-------------|--------------|
| <b>LIGO</b> CALIFORNIA INSTITUTE OF TECHNOLOGY<br>MASSACHUSETTS INSTITUTE OF TECHNOLOGY |             |              |
| SIZE  | DWG. NO.    | REV.         |
| D   | D0901125    | v7           |
| SCALE: 1:8  | PROJECTION: | SHEET 3 OF 3 |

8

7

6

5

4

3

2

1

DD0901083 Asst LIGO Systems: HAM2-H1 Top Level Chamber Assembly, ALL PART PDM REV-X:115, DRAWING PDM REV: X:006