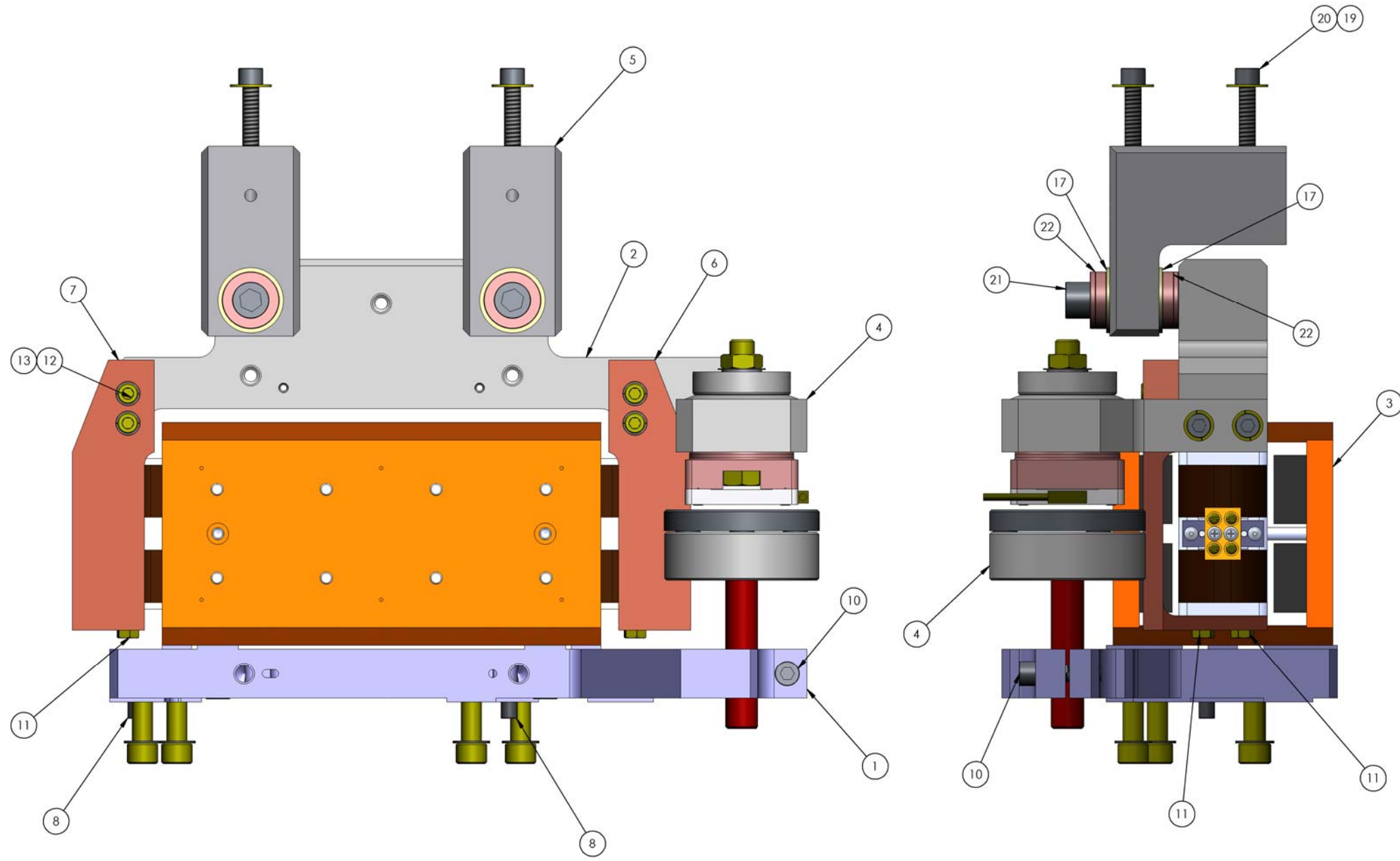


NOTES CONTINUED:
 5. VENDOR REFERENCES ARE PROVIDED AS EXAMPLES OF PARTS MEETING ALL REQUIRED SPECIFICATIONS. EQUIVALENTS ARE ALWAYS ACCEPTABLE UNLESS OTHERWISE SPECIFIED.
 6. ASSEMBLY PROCEDURE: E0900357 AND E1000096.

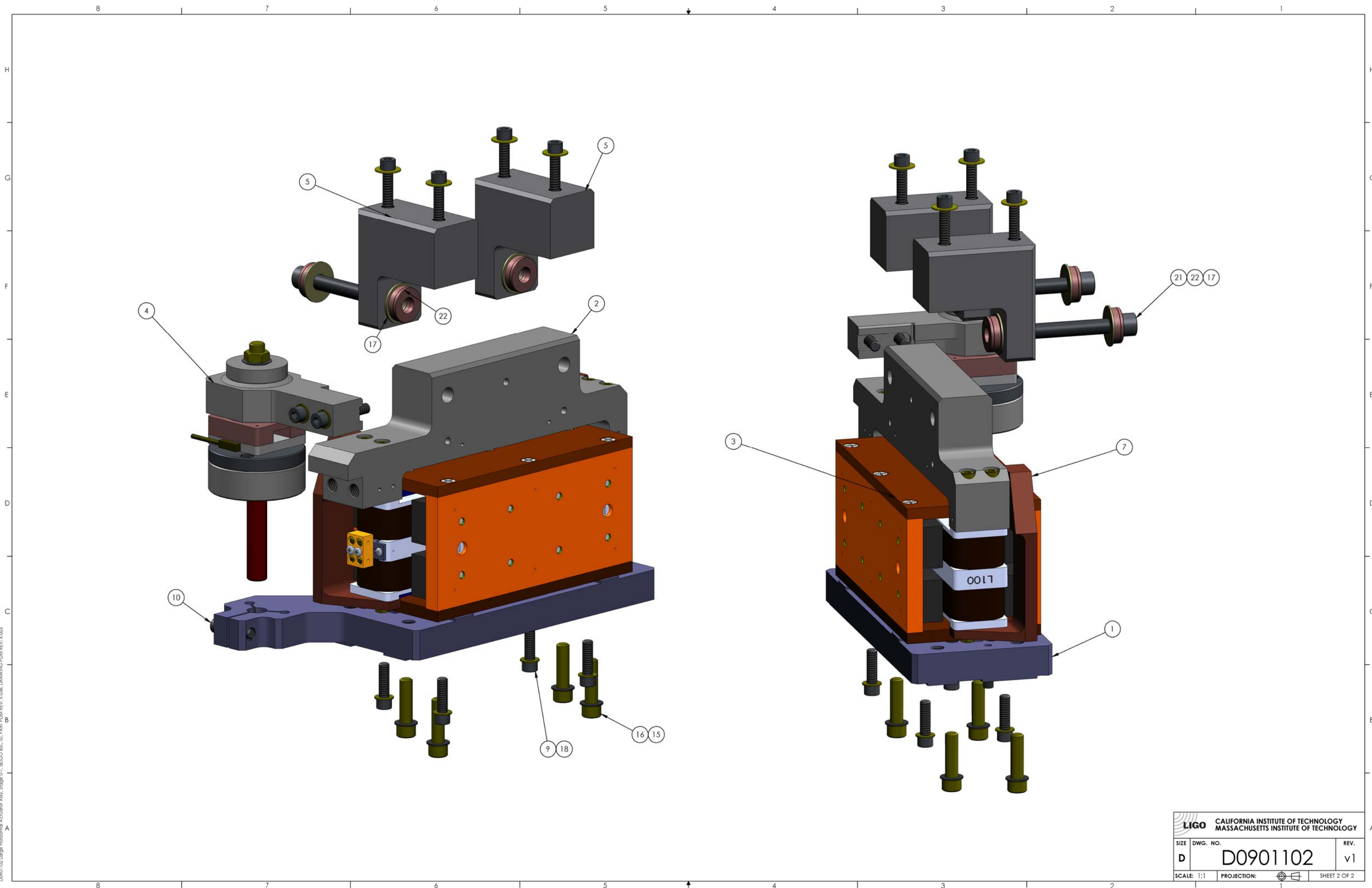
REV.	DATE	DCN #	DRAWING TREE #
v1	27 Jan. 2010	E1000049	E1000025



ITEM NO.	PART NUMBER	DESCRIPTION	MATERIAL	Running Config/Qty.
22	McMaster_91944A450	Spherical Washer .406 Id x .88 od x .25 thk	18-8 SSSL	4
21	MCMaster_92196A633	SHCS. 3/8"-16x2.25"	18-8 SS	2
20	HOLKROME_78066	SHCS. 1/4"-20x1.5"	18-8 SS	4
19	McMaster_98019A355	WASHER .28 ID X .63 OD X .065 THK	300 SSSL	4
18	UCC WFV-25	Flat Washer, Vented .255 ID, .46 OD, .032 THK	18-8 SSSL	4
17	MCMaster_92141A051	Flat Washer, 3/8"	18-8 SS	4
16	McMaster_92196A584	Screw, SHCS. 5/16-18 x 1 1/8 lg.	18-8 SSSL	4
15	UC_COMPONENTS_WFV-31	Washer Vented, .328 ID X .562 OD X .032 THK #5/16	18-8 SSSL	4
14	McMaster_92196A291	Screw SHCS, 10-32 x 1.375 lg.	18-8 SSSL	4
13	UC_COMPONENTS_WFV-10	Washer Vented, 0.195 ID, 0.354 OD, 0.032 THK #10	18-8 SS	8
12	McMaster_92196A271	Screw 10-32 x .62 lg.	18-8 SSSL	4
11	UC_COMPONENTS_H-1006	Hex Head Machine Screw, 10-32 x 3/8 lg vented	18-8 SSSL	4
10	HOLKROME_78062	SHCS. 1/4"-20x1.0"	18-8 SS	1
9	HOLKROME_78060	SHCS. 1/4"-20x.875"	18-8 SS	4
8	McMaster_90145A539	Dowel Pin 1/4" (.2501) x 5/8" L 18.8 SST	18-8 Stainless	2
7	D1000175	THERMAL BAR, LEFT, LARGE ACTUATOR, aLIGO BSC ISI	COPPER	1
6	D1000176	THERMAL BAR, RIGHT, LARGE ACTUATOR, aLIGO BSC ISI	COPPER	1
5	D0902424	HORIZONTAL ACTUATOR L CONNECTOR, STAGE 0-1, aLIGO BSC ISI	6061-T6 Al	2
4	D1000478	SENSOR ASSEMBLY HORIZONTAL, aLIGO BSC ISI	N/A	1
3	D0902749	Large Actuator, aLIGO SEI HAM-ISI & BSC-ISI	N/A	1
2	D0902427	ACTUATOR COIL BRACKET HORIZONTAL, STAGE 0-1, aLIGO BSC ISI	6061-T6 Al	1
1	D0902310	ACTUATOR MAGNET BRACKET, STAGE 0-1, aLIGO BSC ISI	6061-T6 Al	1

DIMENSIONS ARE IN INCHES TOLERANCES: .XX ± N/A .XXX ± N/A ANGULAR ± N/A *		NOTES AND TOLERANCES: (UNLESS OTHERWISE SPECIFIED) 1. INTERPRET DRAWING PER ASME Y14.5-1994. 2. REMOVE ALL SHARP EDGES, R.02 MIN. 3. DO NOT SCALE FROM DRAWING. 4. ALL MACHINING FLUIDS MUST BE FULLY SYNTHETIC, FULLY WATER SOLUBLE AND FREE OF SULFUR, SILICONE, AND CHLORINE.		CALIFORNIA INSTITUTE OF TECHNOLOGY MASSACHUSETTS INSTITUTE OF TECHNOLOGY		PART NAME LARGE HORIZONTAL ACTUATOR ASSY, aLIGO BSC ISI							
MATERIAL		FINISH		NEXT ASSY		DESIGNER		SIZE		DWG. NO.		REV.	
N/A		N/A μinch		D1000310		S.BARNUM		D		D0901102		v1	
						CHECKER		SCALE: 1:1		PROJECTION:		SHEET 1 OF 2	
						APPROVAL							

D0901102 Large Horizontal Actuator Assy, Stage 0-1, aLIGO BSC ISI, PART EDM REV: X-008, DRAWING PDM REV: X-003



LIGO CALIFORNIA INSTITUTE OF TECHNOLOGY MASSACHUSETTS INSTITUTE OF TECHNOLOGY		REV. v1
SIZE D	DWG. NO. D0901102	REV. v1
SCALE: 1:1	PROJECTION:	SHEET 2 OF 2

D0901102 Large Horizontal Actuator Assy, Stage 0-1, at LIGO BIC III, PART FDM REV: X-008, DRAWING FDM REV: X-003