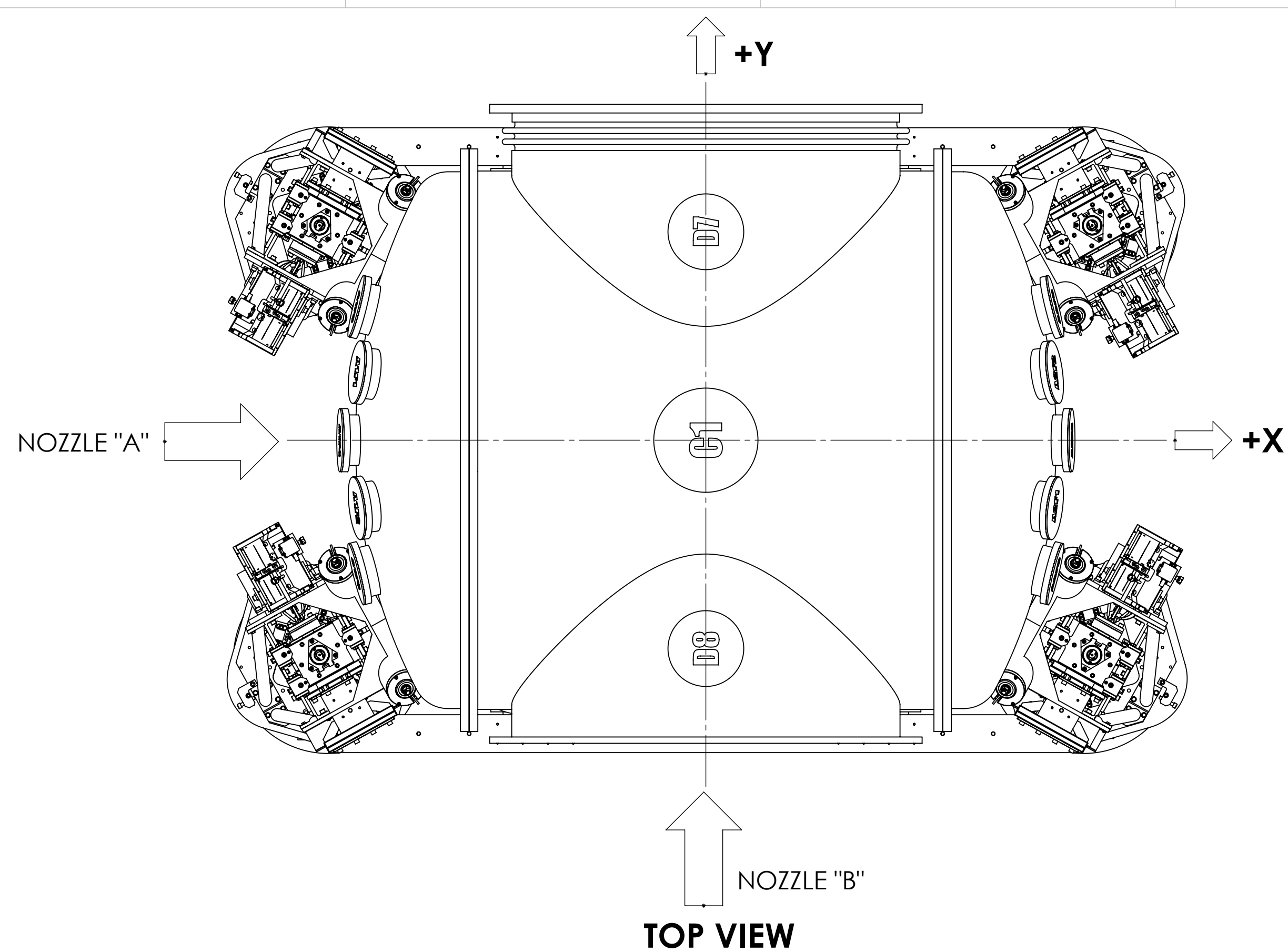
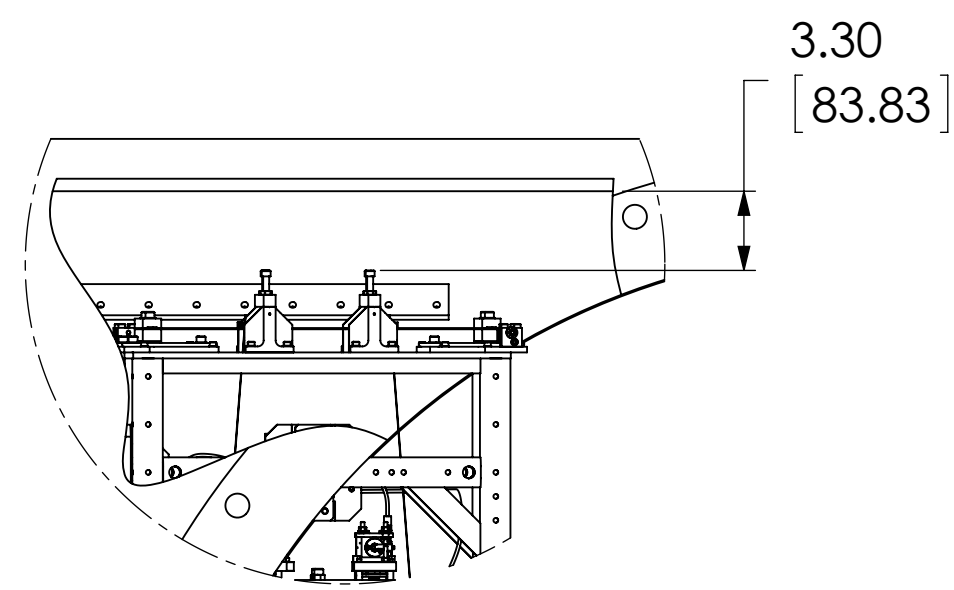


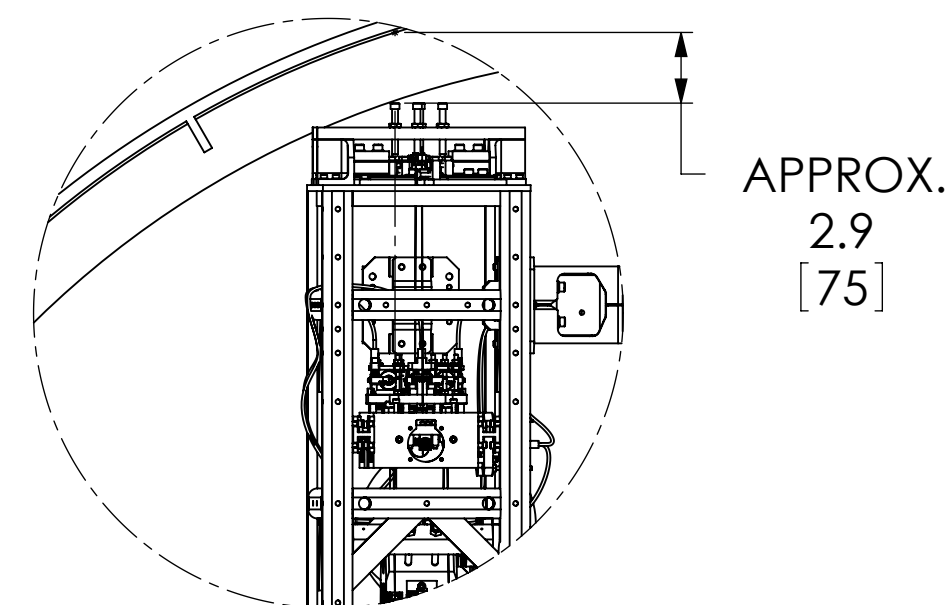
REV.	DATE	DWG #	DRAWING TREE #
v6	09 MAY 2013	E1300364-x0	
v8	16 JUL 2014	E1400331-x0	



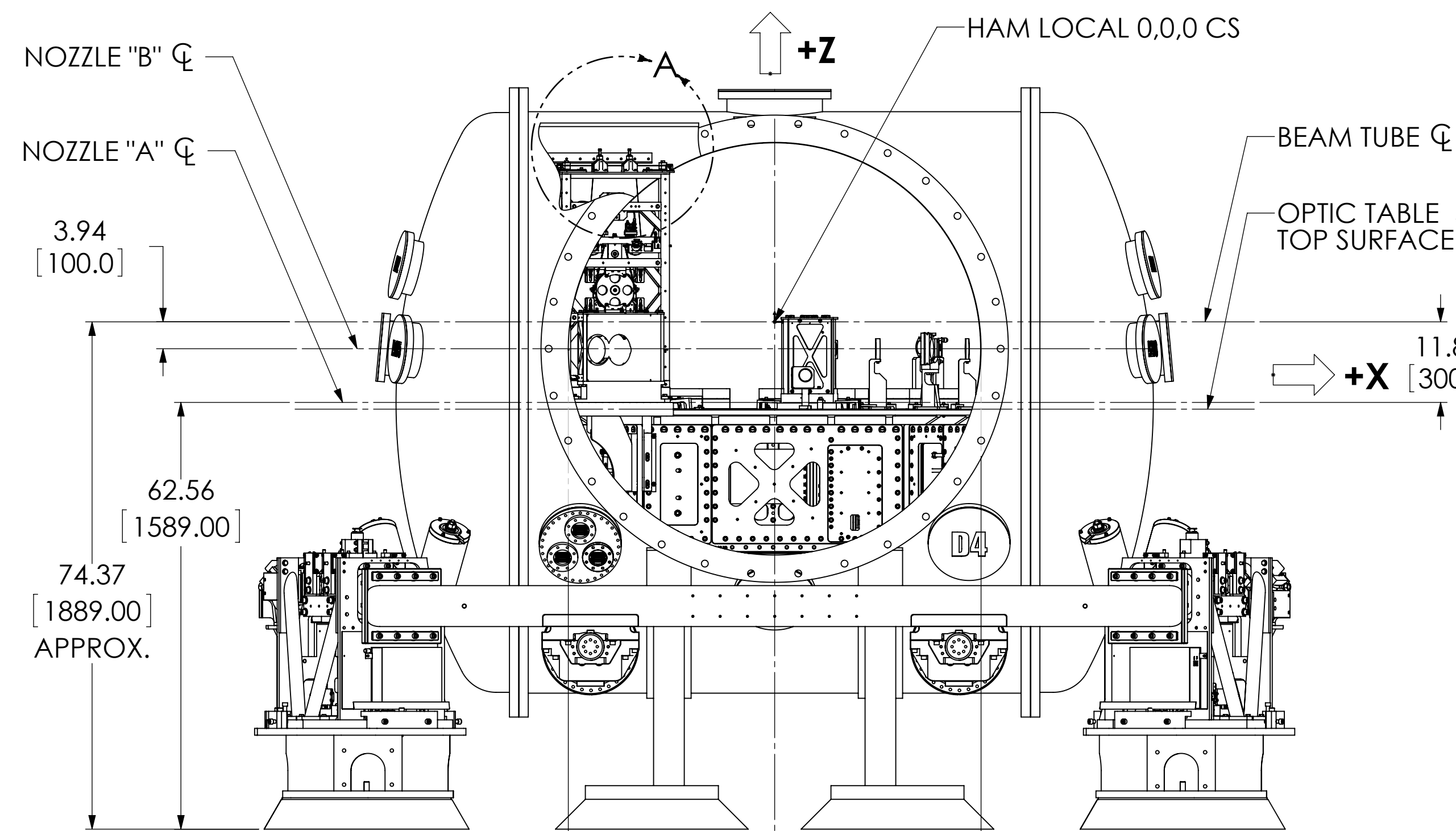
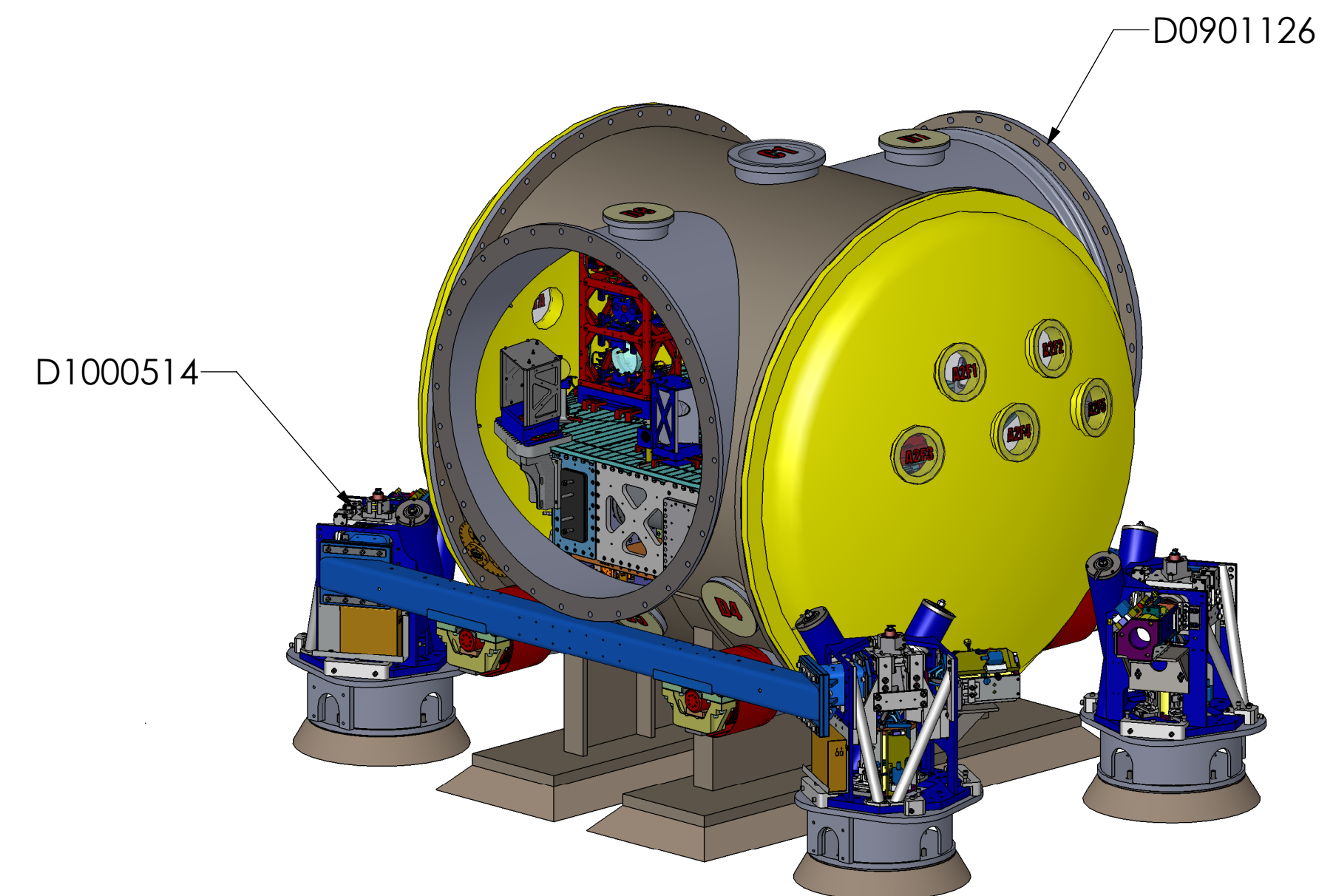
TOP VIEW



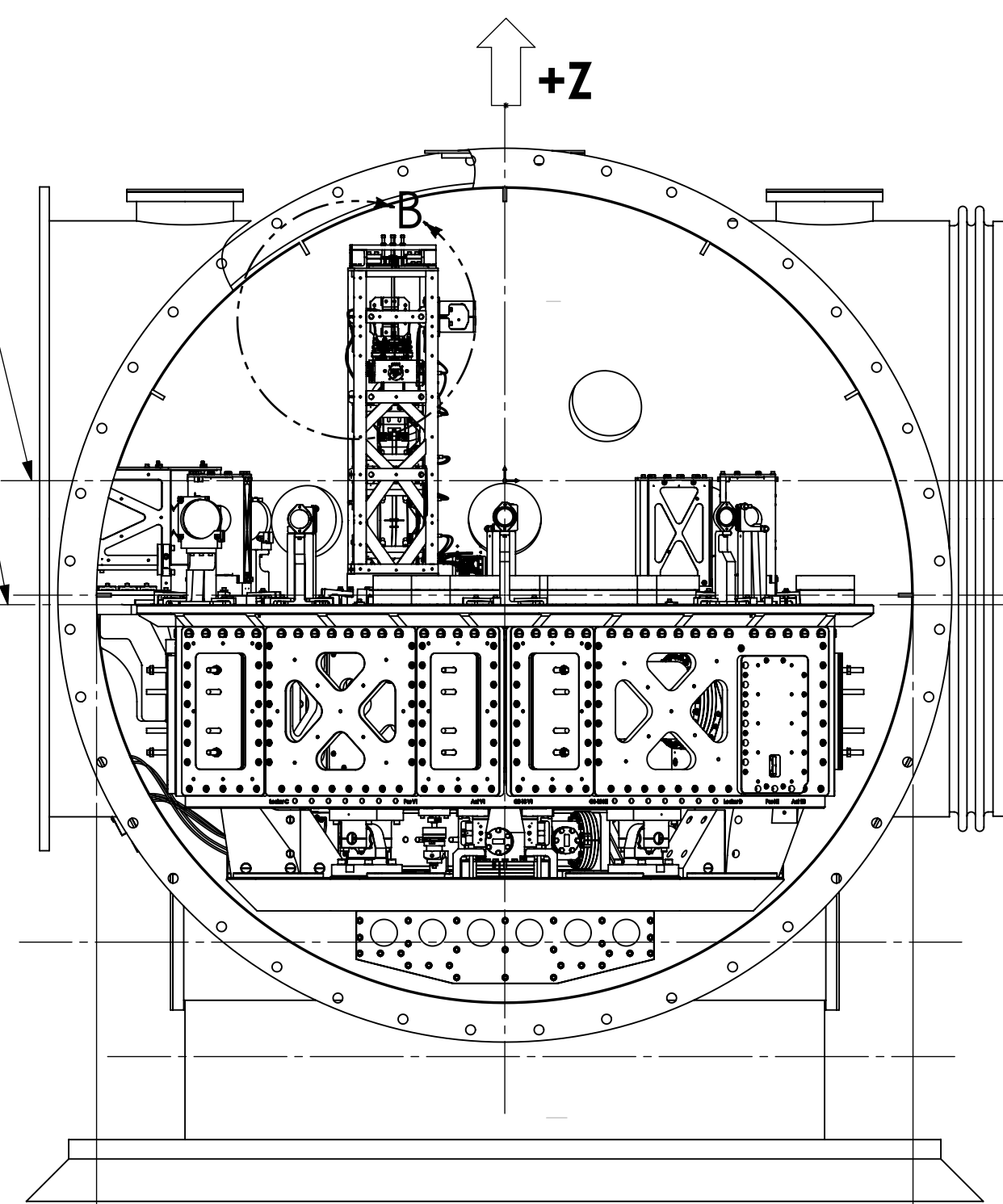
DETAIL A
SCALE 1:8



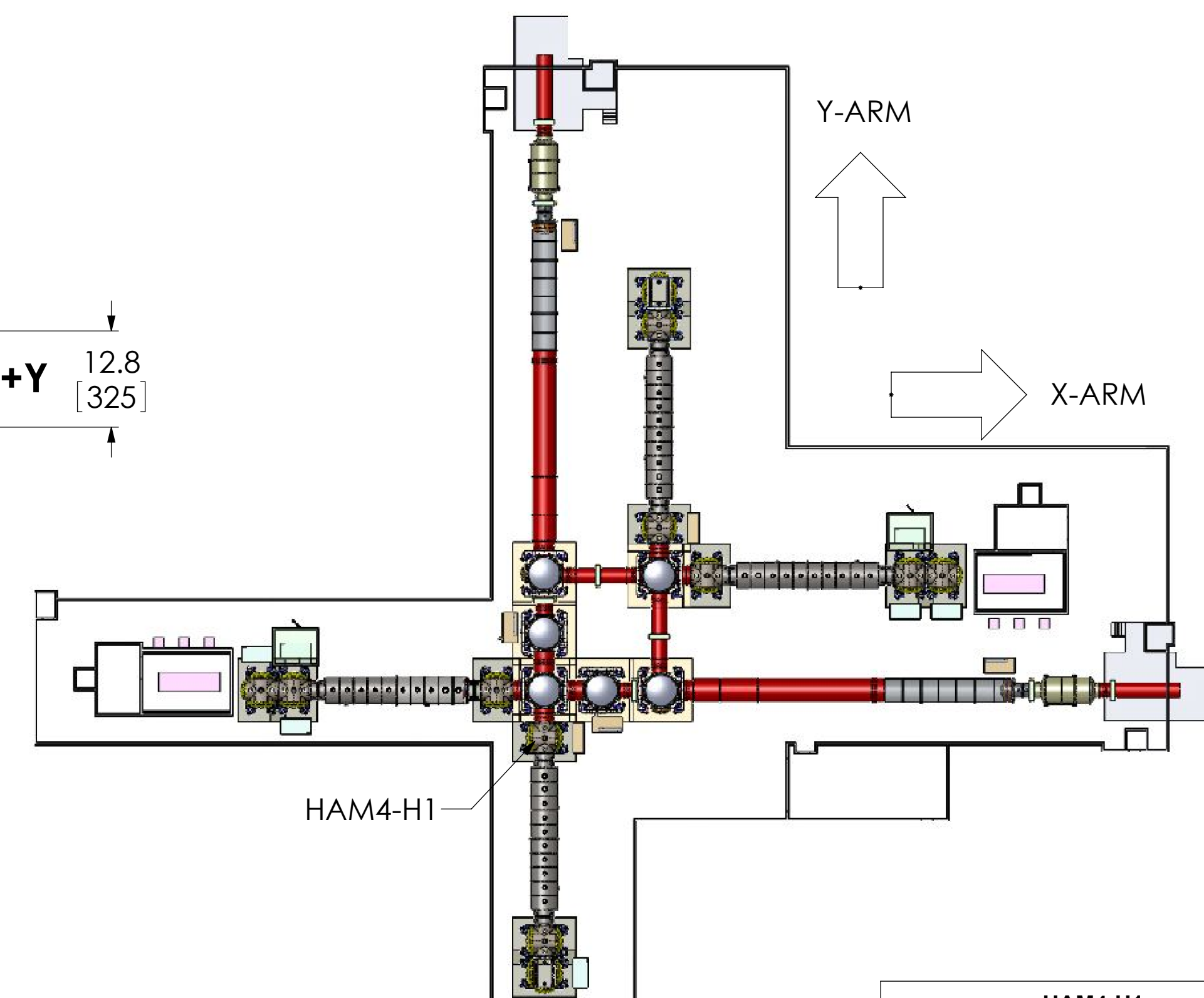
DETAIL B
SCALE 1:8



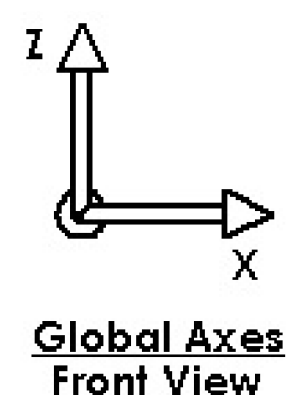
FRONT VIEW



RIGHT VIEW



HAM4-H1 GLOBAL COORDINATES (mm)	
X	0.0
Y	-3831.0
Z	0.0



**Global Axes
Front View**

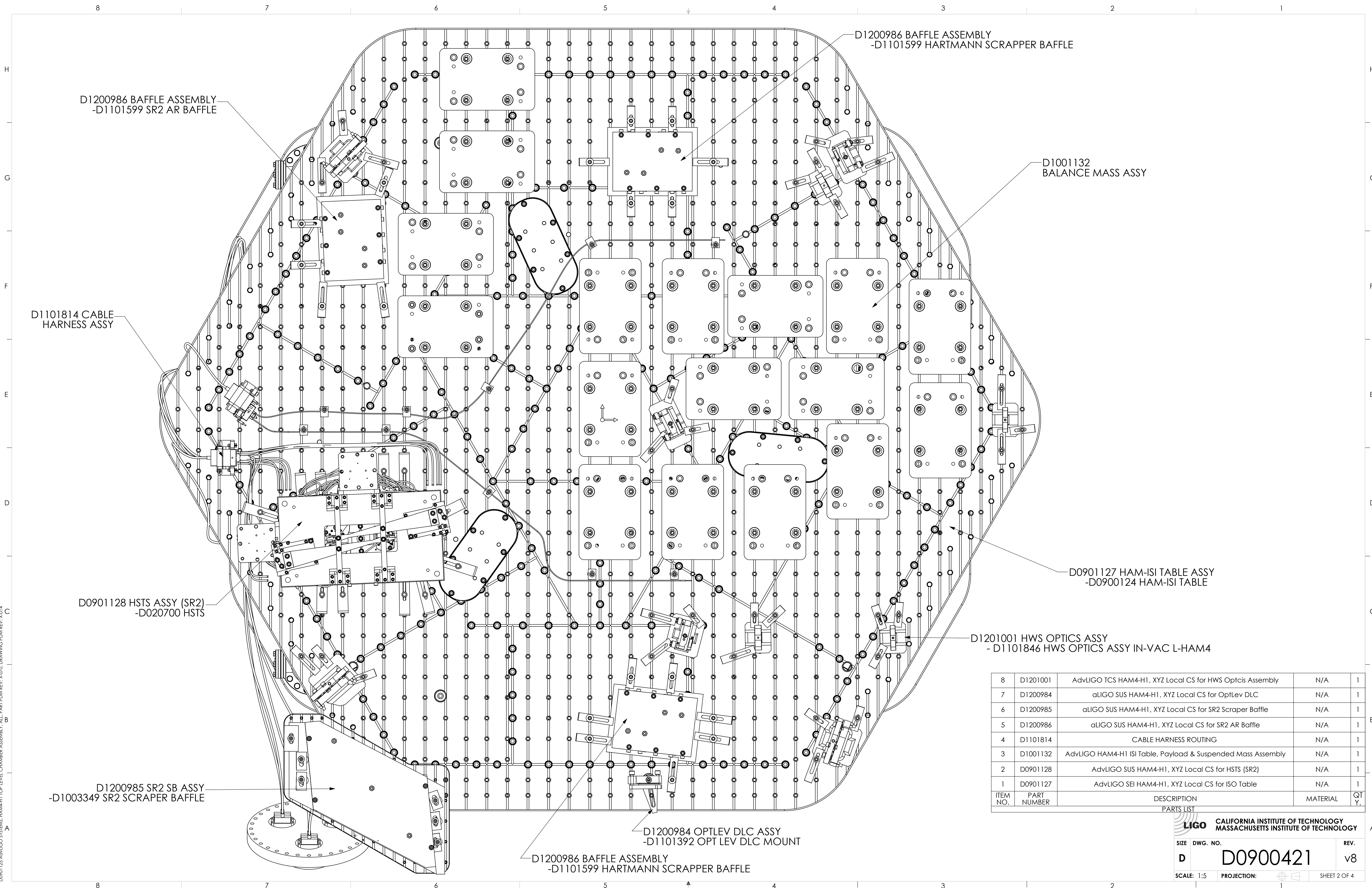
NOTES AND TOLERANCES: (UNLESS OTHERWISE SPECIFIED)

MATERIAL	FINISH	NEXT ASSY
N/A	N/A μinch	N/A

LIGO CALIFORNIA INSTITUTE OF TECHNOLOGY MASSACHUSETTS INSTITUTE OF TECHNOLOGY	
SYSTEM	ADVANCED LIGO
SUB-SYSTEM	SUS
NEXT ASSY	N/A

PART NAME		DESIGNER		SIZE		DWG. NO.		REV.	
AdvLIGO Systems, HAM4-H1 Top Level Chamber Assembly		E.SANCHEZ		D		D0901125		v8	
CHECKER		APPROVAL		SCALE		PROJECTION		SHEET	
SEE DCC		SEE DCC		1:16		FIRST ANGLE		1 OF 4	

D0901125 ADVLIGO SYSTEMS, HAM4-H1 TOP LEVEL CHAMBER ASSEMBLY, ALL PART PDM REV. X:070, DRAWING PDM REV. X:014



D1200986 BAFFLE ASSEMBLY
-D1101599 SR2 AR BAFFLE

D1200986 BAFFLE ASSEMBLY
-D1101599 HARTMANN SCRAPER BAFFLE

D1001132
BALANCE MASS ASSY

D1101814 CABLE
HARNESS ASSY

D0901128 HSTS ASSY (SR2)
-D020700 HSTS

D0901127 HAM-ISI TABLE ASSY
-D0900124 HAM-ISI TABLE

D1201001 HWS OPTICS ASSY
- D1101846 HWS OPTICS ASSY IN-VAC L-HAM4

D1200985 SR2 SB ASSY
-D1003349 SR2 SCRAPER BAFFLE

D1200984 OPTLEV DLC ASSY
-D1101392 OPT LEV DLC MOUNT

D1200986 BAFFLE ASSEMBLY
-D1101599 HARTMANN SCRAPER BAFFLE

ITEM NO.	PART NUMBER	DESCRIPTION	MATERIAL	QTY.
8	D1201001	AdvLIGO TCS HAM4-H1, XYZ Local CS for HWS Optics Assembly	N/A	1
7	D1200984	aLIGO SUS HAM4-H1, XYZ Local CS for OptLev DLC	N/A	1
6	D1200985	aLIGO SUS HAM4-H1, XYZ Local CS for SR2 Scraper Baffle	N/A	1
5	D1200986	aLIGO SUS HAM4-H1, XYZ Local CS for SR2 AR Baffle	N/A	1
4	D1101814	CABLE HARNESS ROUTING	N/A	1
3	D1001132	AdvLIGO HAM4-H1 ISI Table, Payload & Suspended Mass Assembly	N/A	1
2	D0901128	AdvLIGO SUS HAM4-H1, XYZ Local CS for HSTS (SR2)	N/A	1
1	D0901127	AdvLIGO SEI HAM4-H1, XYZ Local CS for ISO Table	N/A	1

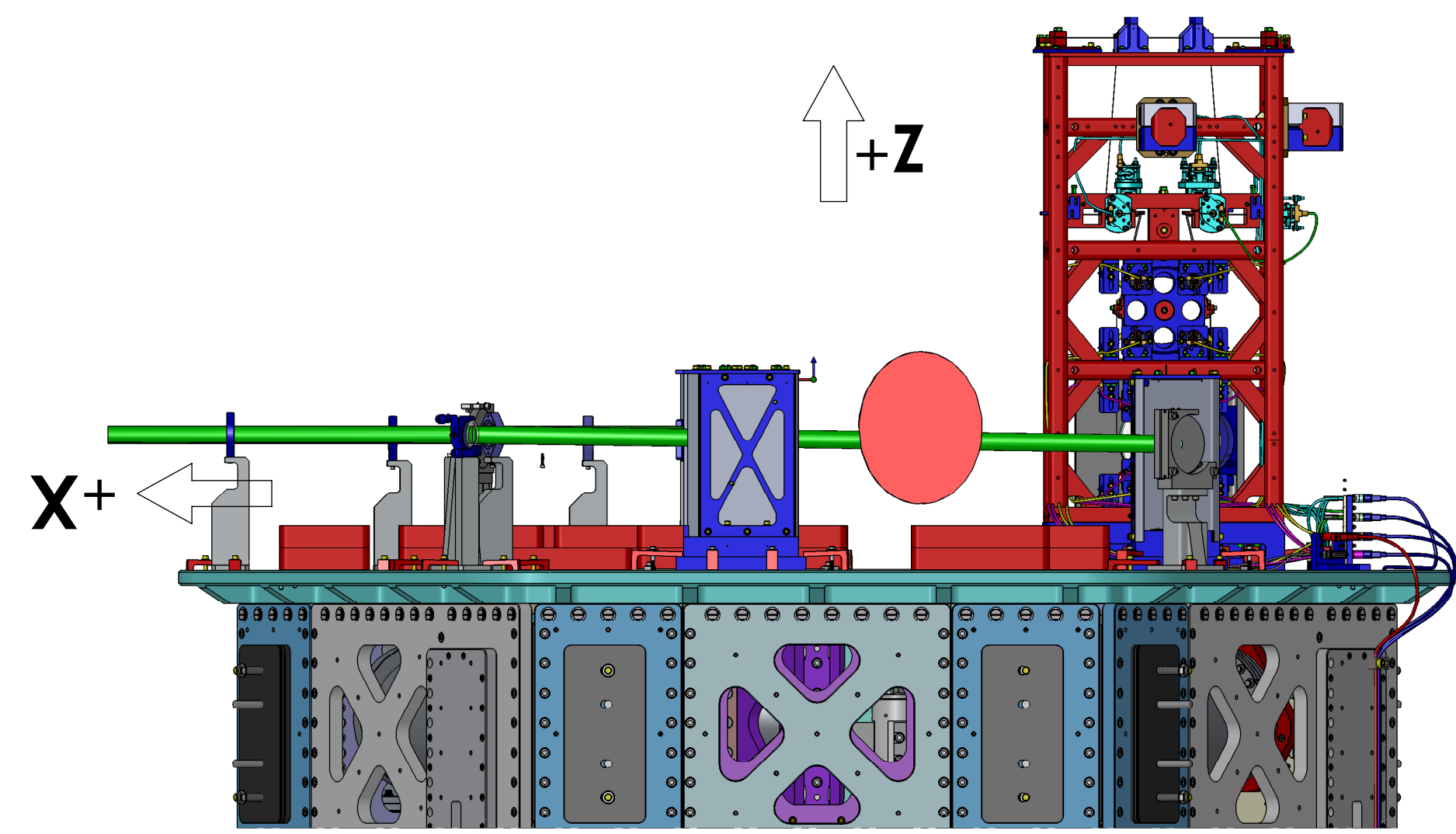
LIGO CALIFORNIA INSTITUTE OF TECHNOLOGY
MASSACHUSETTS INSTITUTE OF TECHNOLOGY

SIZE DWG. NO. REV.

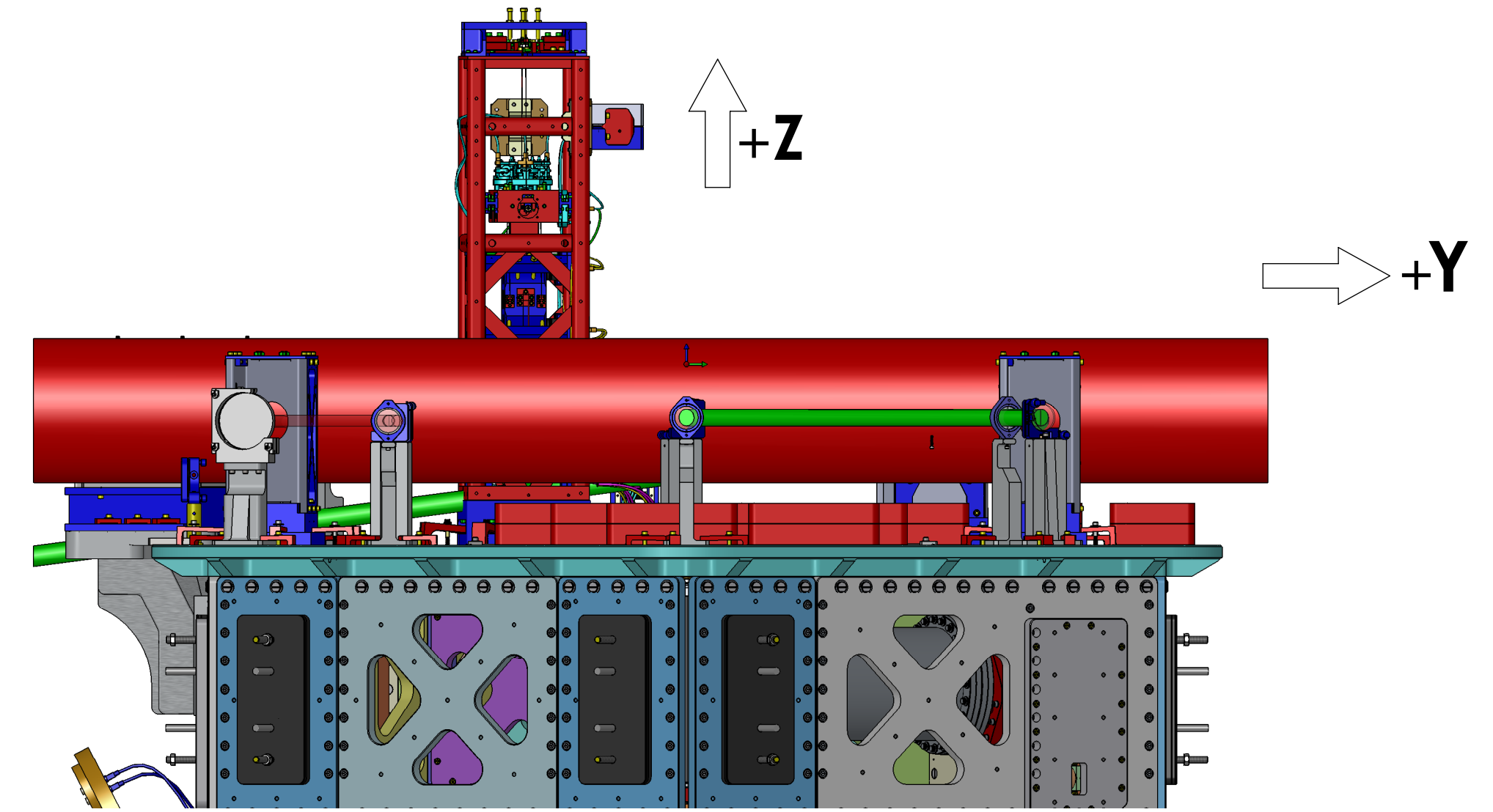
D **D0900421** v8

SCALE: 1:5 PROJECTION: SHEET 2 OF 4

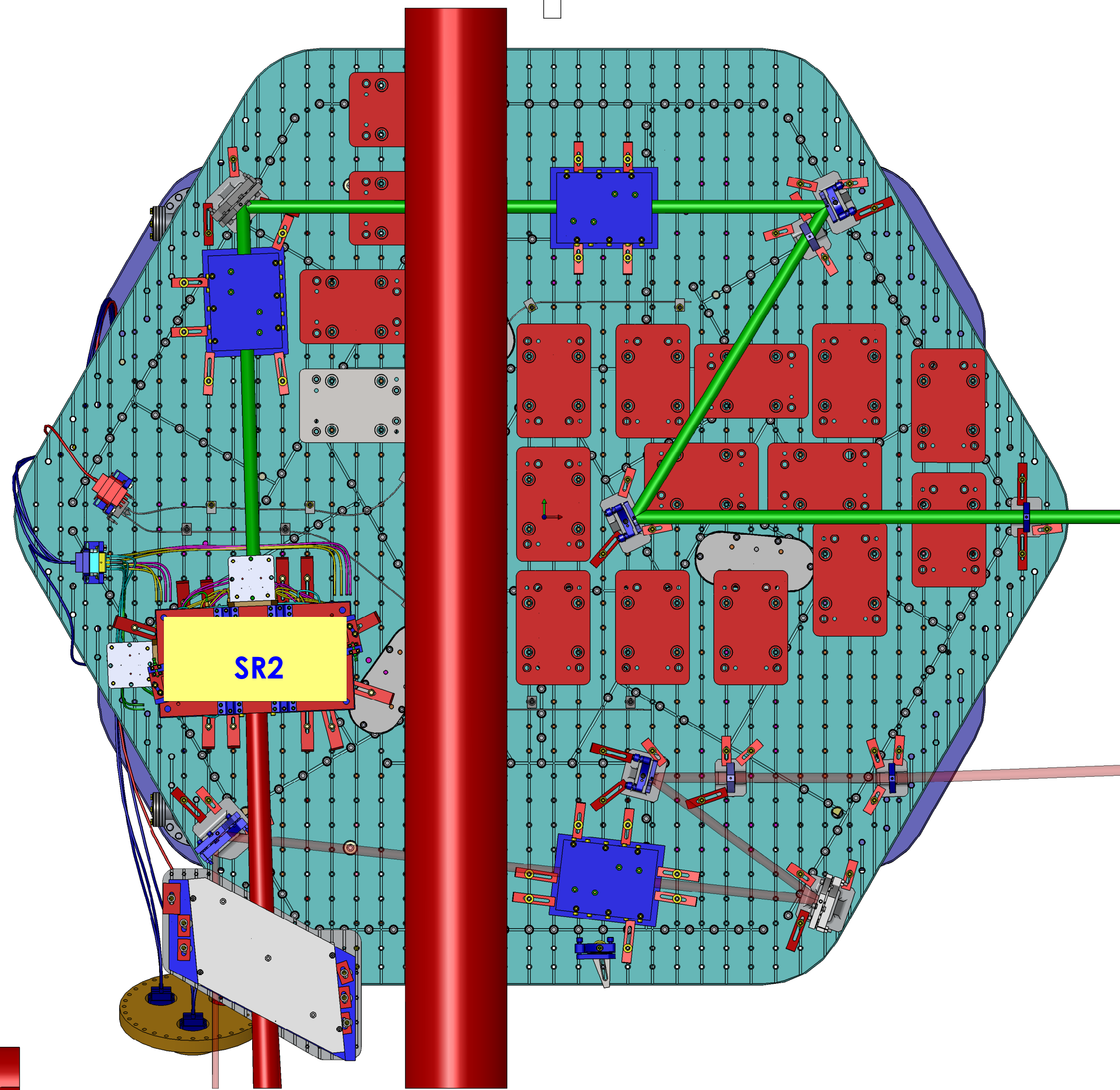
D0901128 ADVLIGO SYSTEMS - HAM4-H1 TOP LEVEL CHAMBER ASSEMBLY - ALL PART FROM REV. X.070. DRAWING FDM REV. X.014



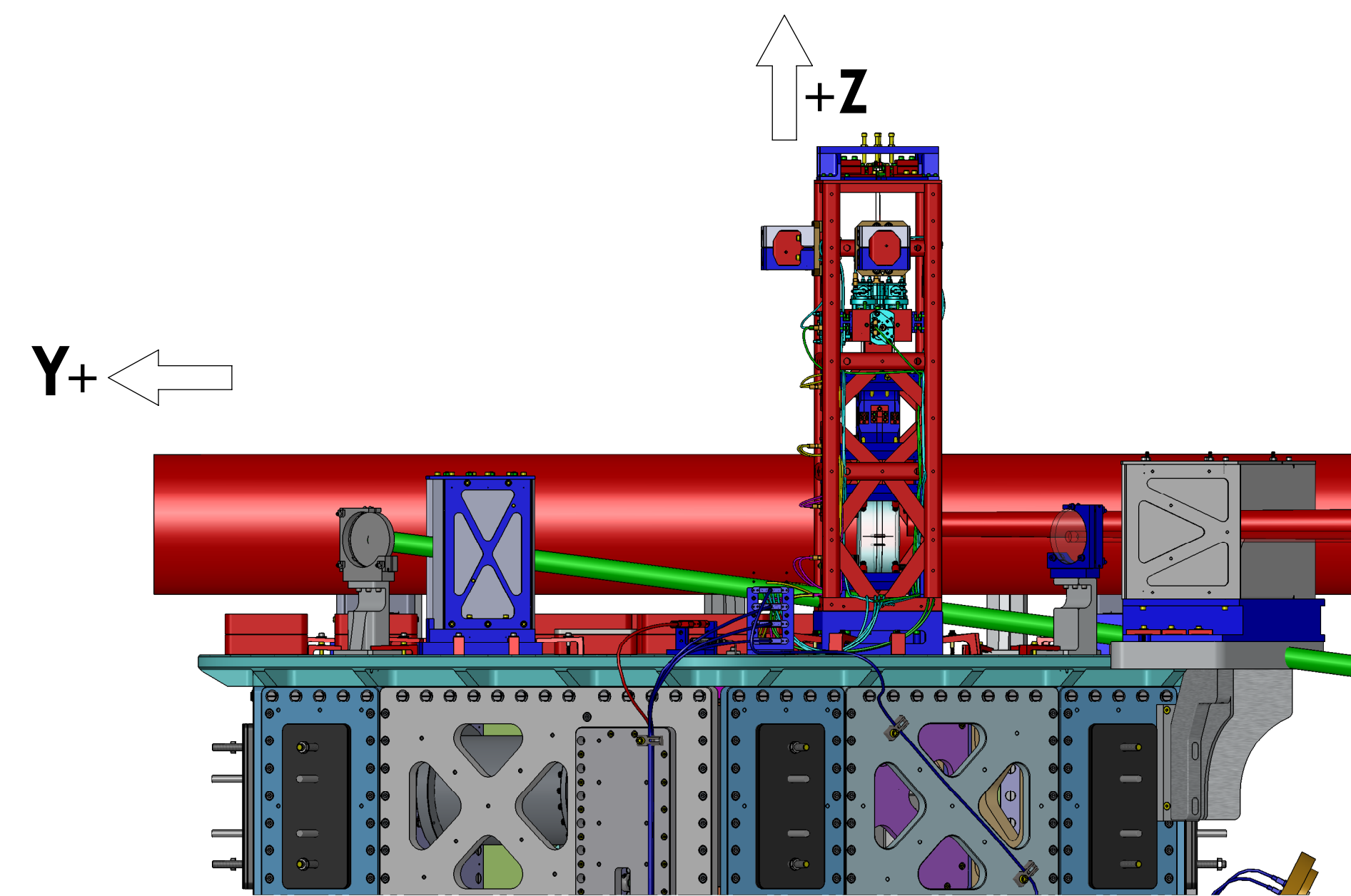
REAR VIEW
(ROTATED 180 DEGREES CCW)



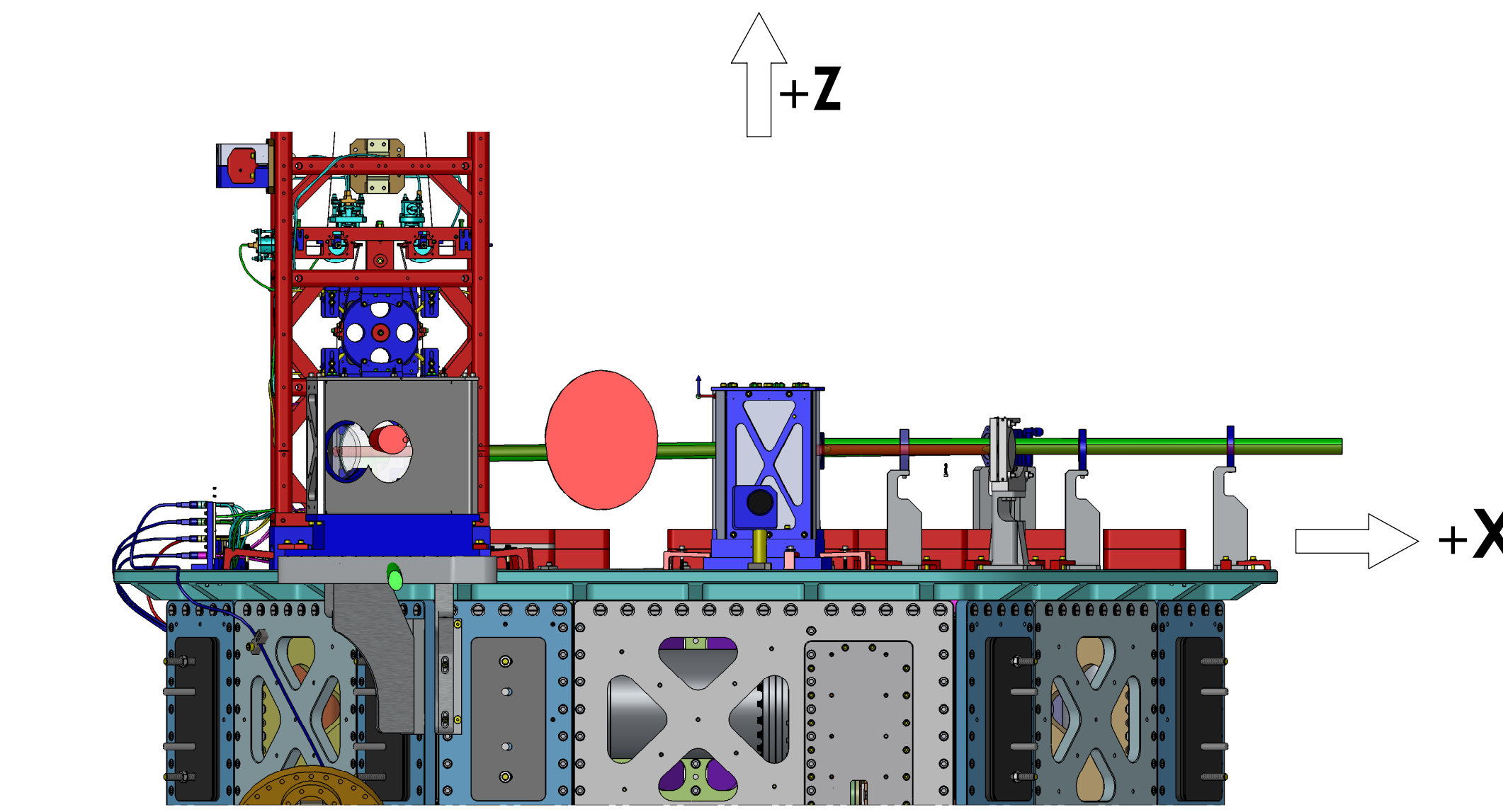
RIGHT SIDE VIEW
(ROTATED 90 DEGREES CW)



TOP VIEW



LEFT SIDE VIEW
(ROTATED 90 DEGREES CCW)

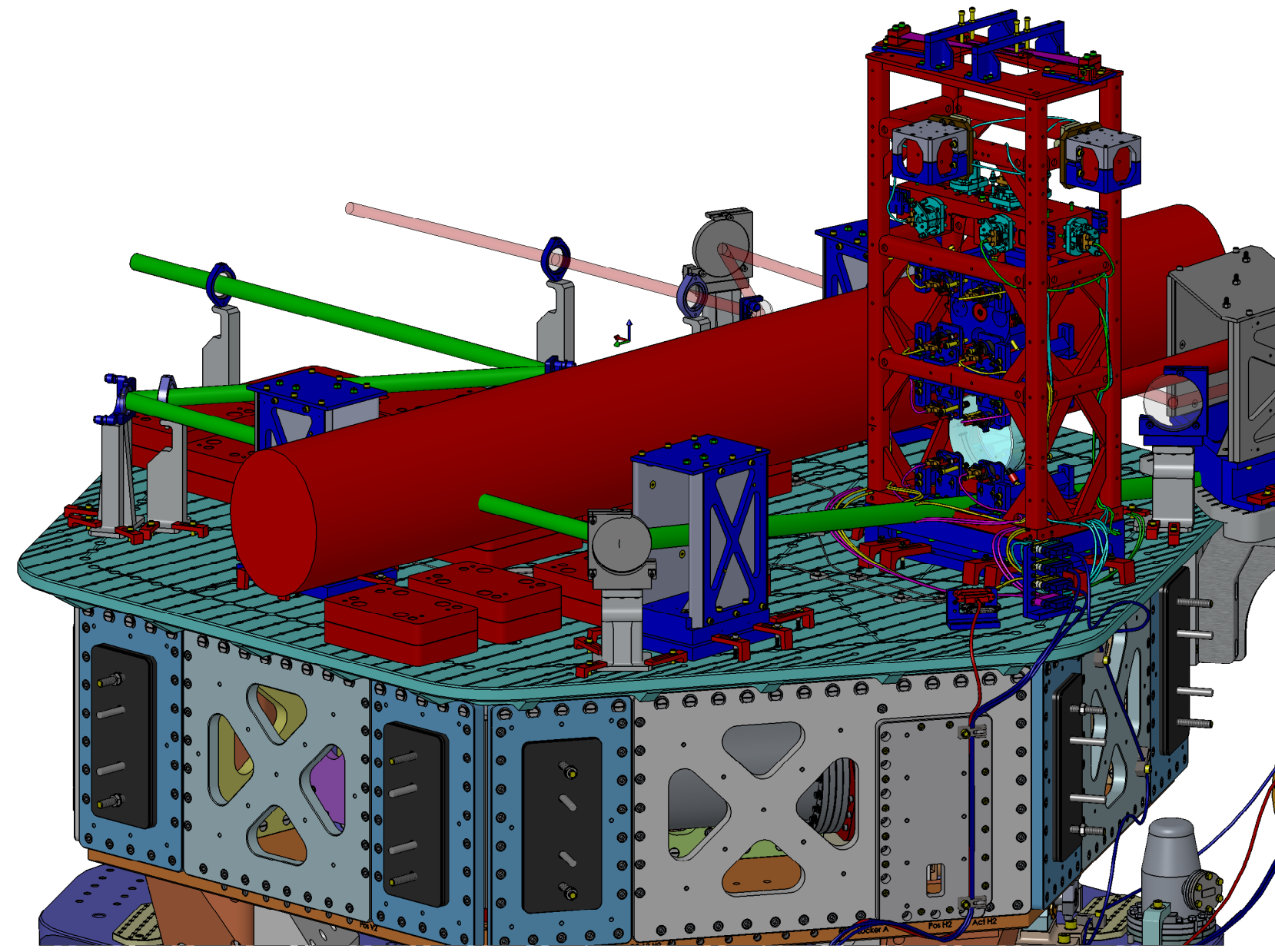


FRONT VIEW

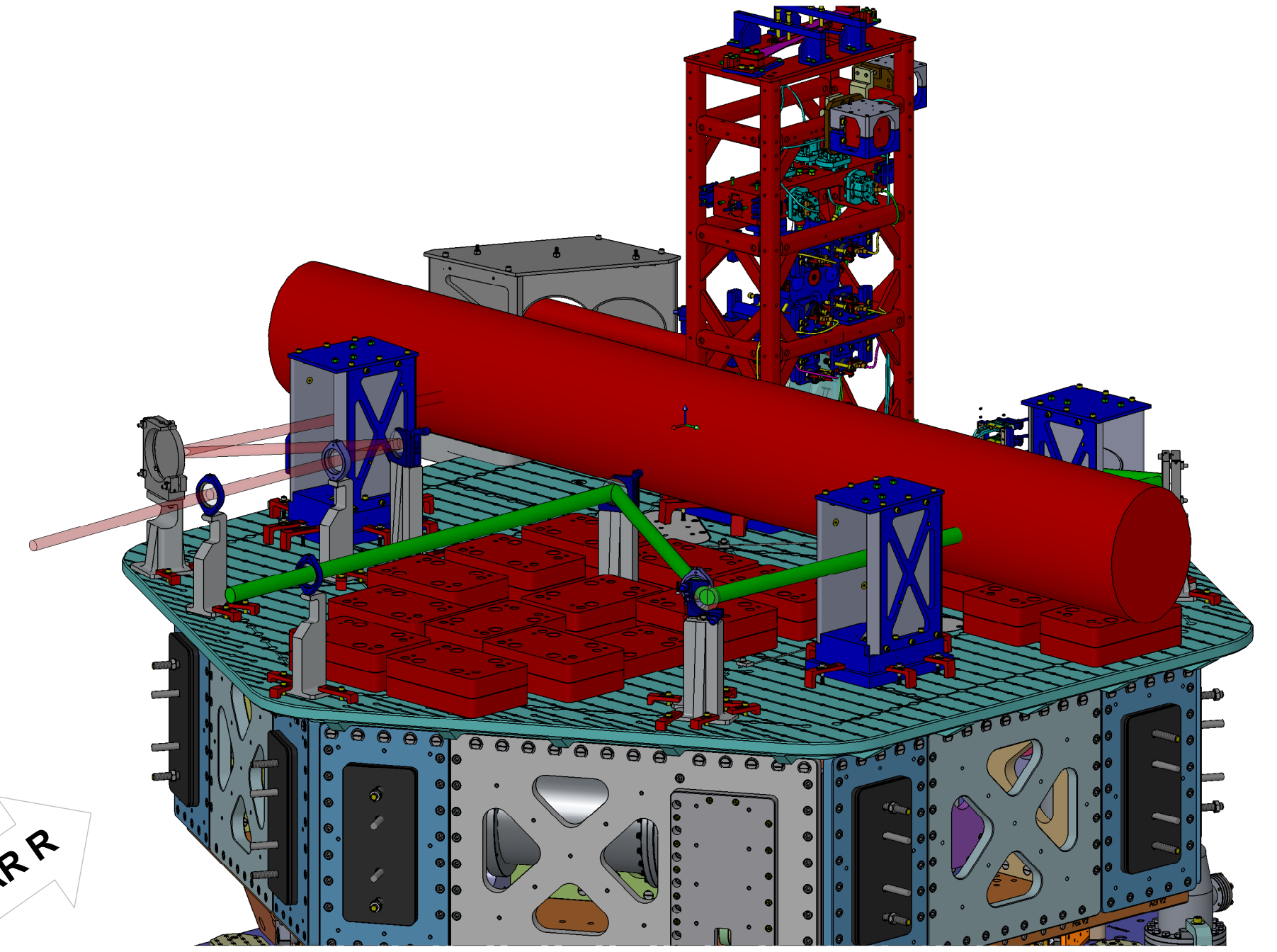
LASER BEAMS - ORTHO VIEWS

CALIFORNIA INSTITUTE OF TECHNOLOGY MASSACHUSETTS INSTITUTE OF TECHNOLOGY		
SIZE	DWG. NO.	REV.
D	D0901125	v8
SCALE: 1:24	PROJECTION:	SHEET 3 OF 4

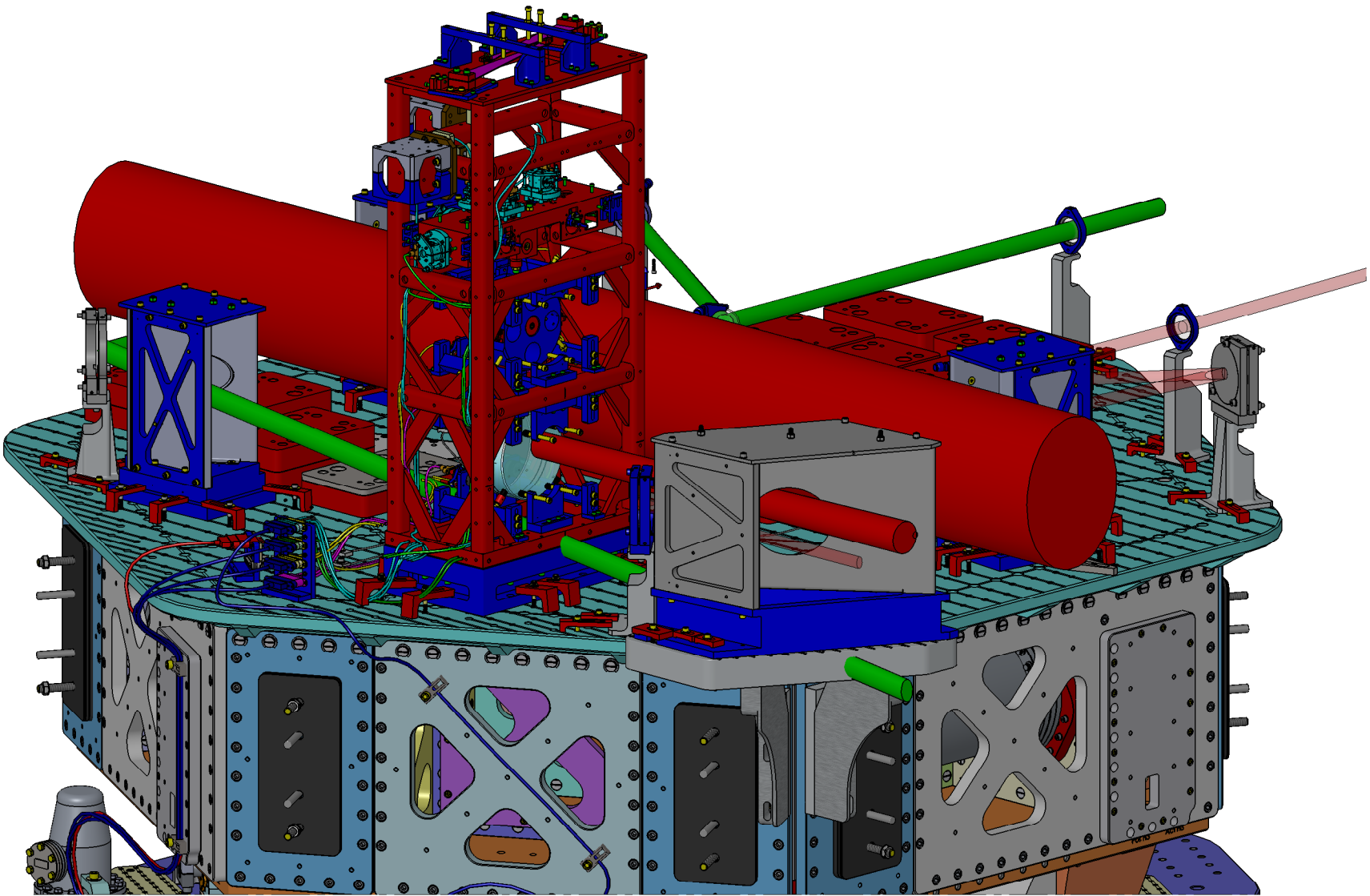
D0901125-ASU-LIGO SYSTEMS: HAMM-H1 TOP LEVEL CHAMBER ASSEMBLY, ALL PART PDM REV: X:070, DRAWING PDM REV: X:014



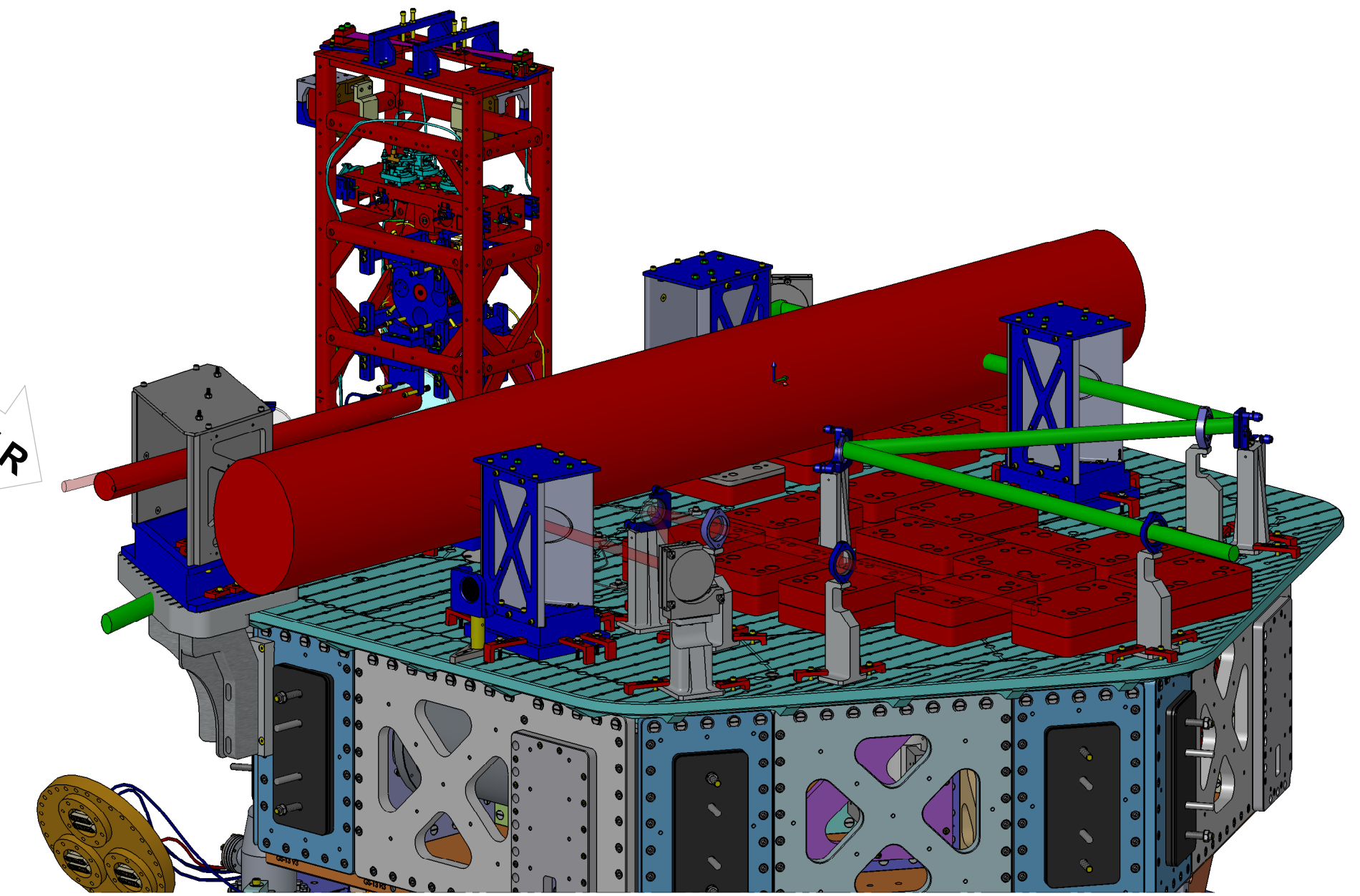
ISO REAR - LEFT



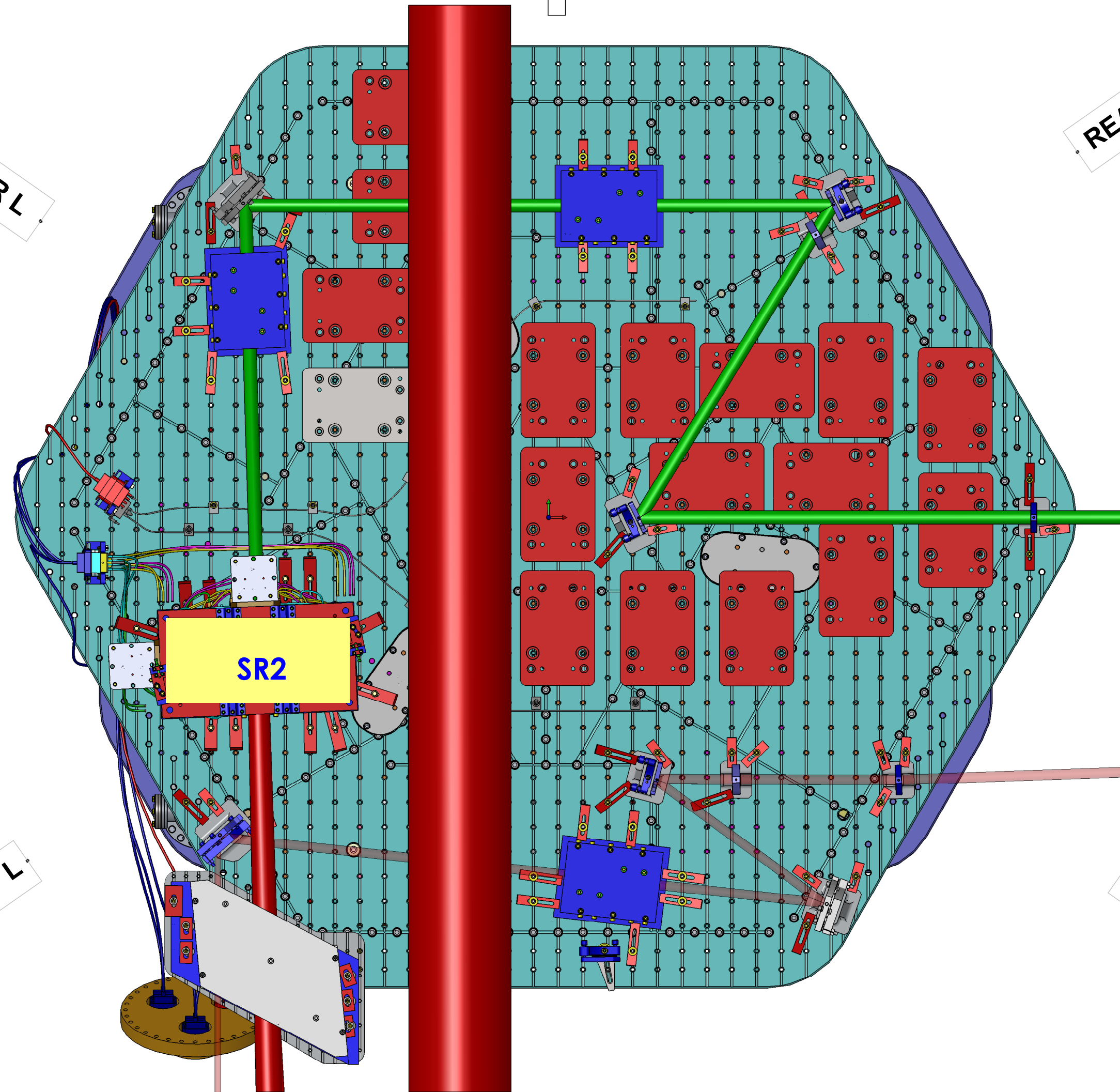
ISO REAR - RIGHT



ISO FRONT - LEFT



ISO FRONT - RIGHT



TOP VIEW

LASER BEAMS - ISO VIEWS

CALIFORNIA INSTITUTE OF TECHNOLOGY MASSACHUSETTS INSTITUTE OF TECHNOLOGY		
SIZE	DWG. NO.	REV.
D	D0901125	v8
SCALE: 1:24	PROJECTION:	SHEET 4 OF 4

D0901125-ASU-LIGO SYSTEMS - HAMM-H1 TOP LEVEL CHAMBER ASSEMBLY - ALL PART FROM REV. X:070, DRAWING FDM REV. X:014