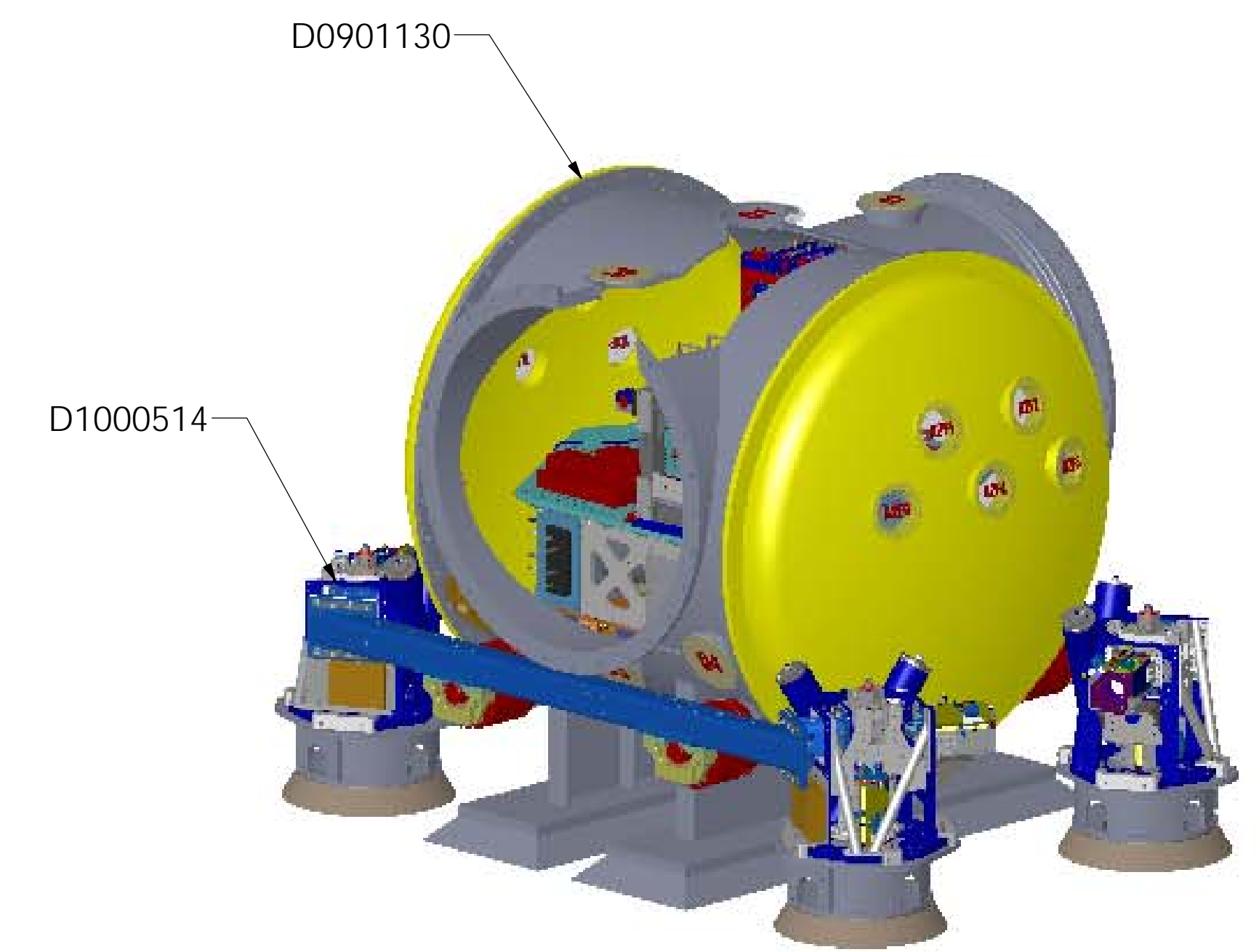
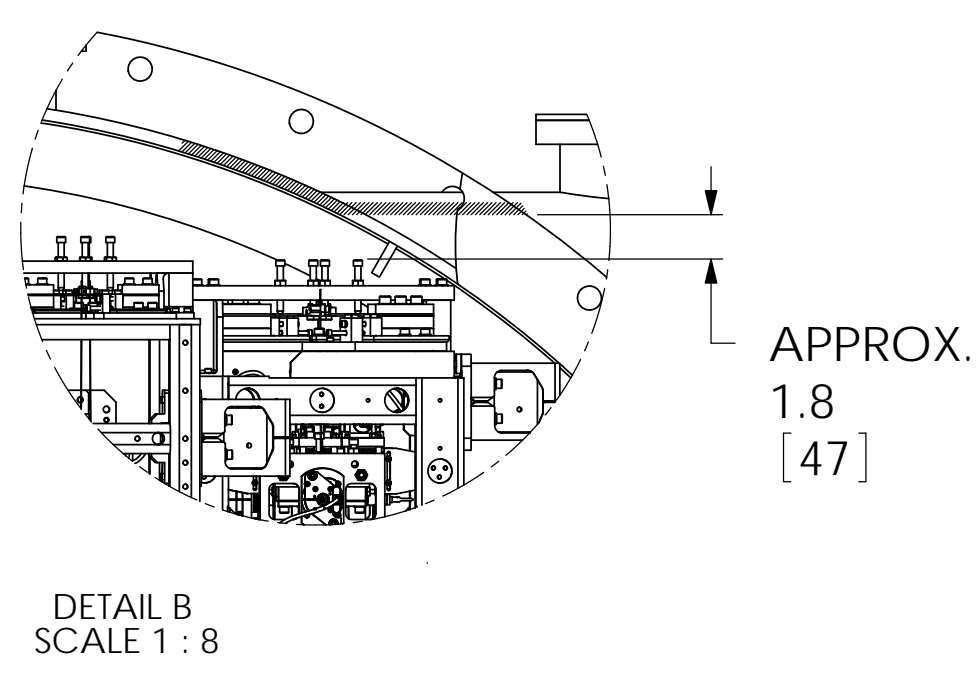
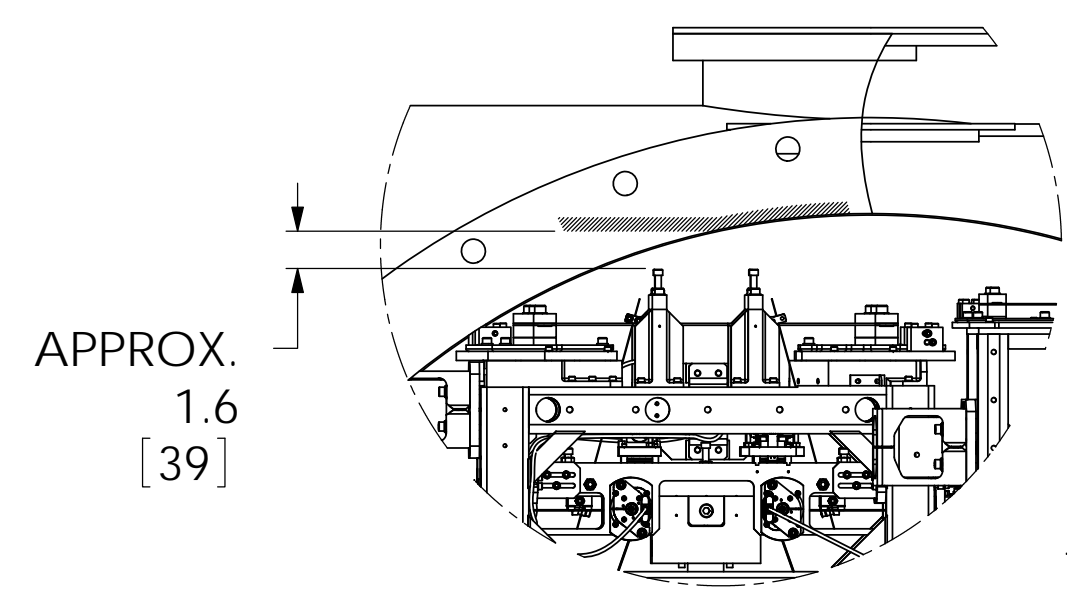
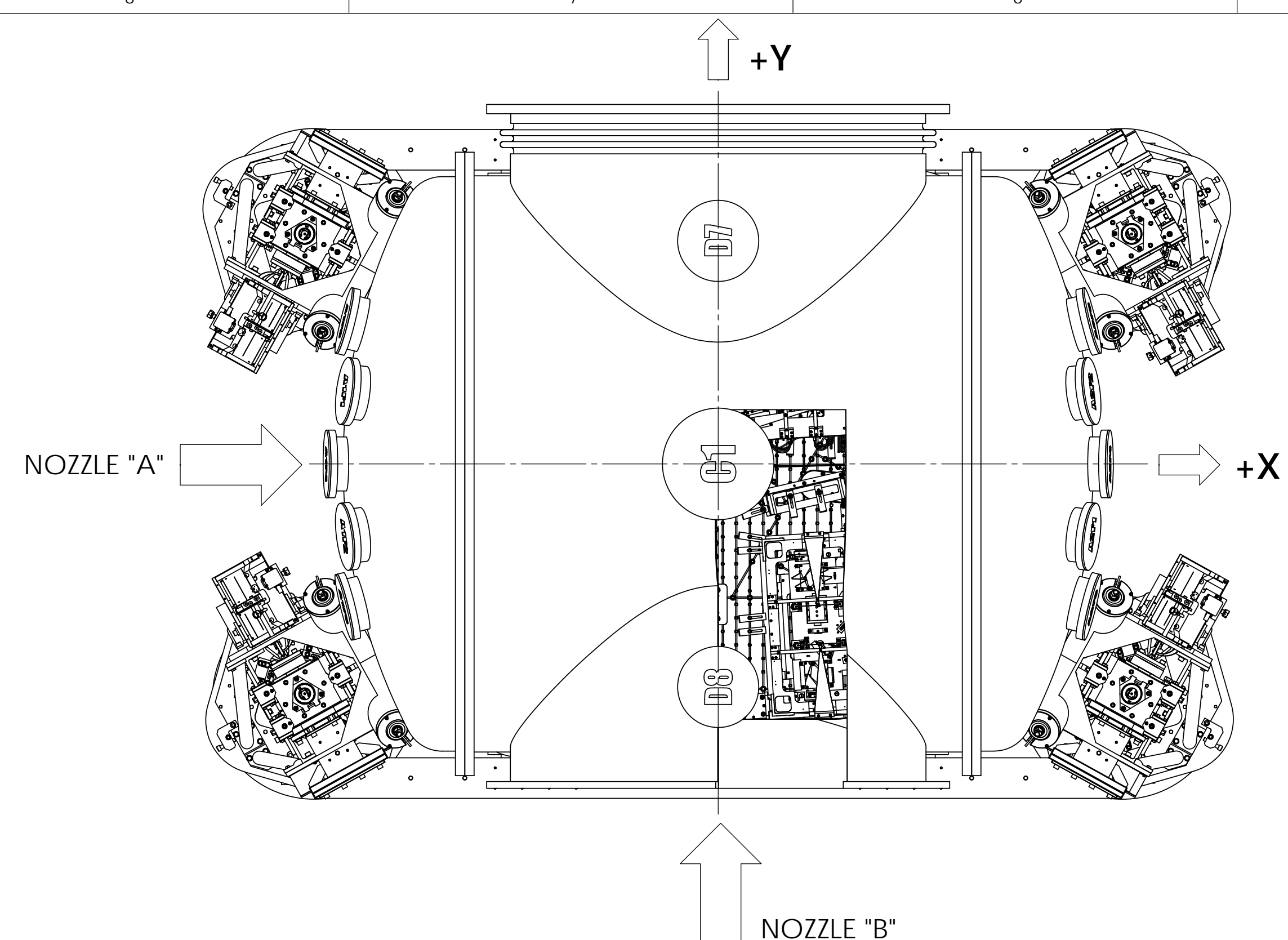
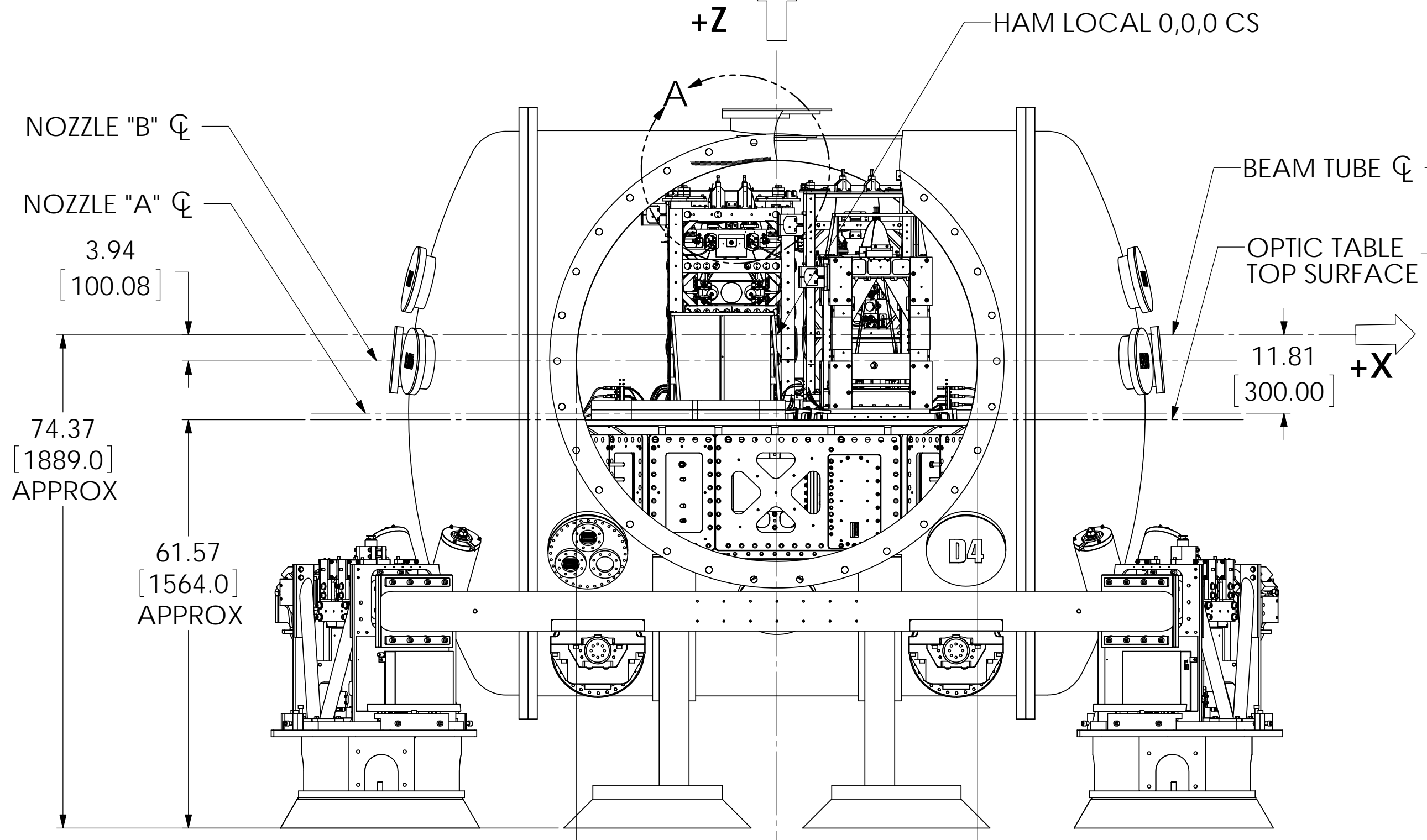


REV.	DATE	DCN #	DRAWING TREE #
v5	14 MAY 2013	E1300401-x0	
v6	22 MAY 2013	E1300472-x0	
v7	27 SEP 2013	E1300716-x0	

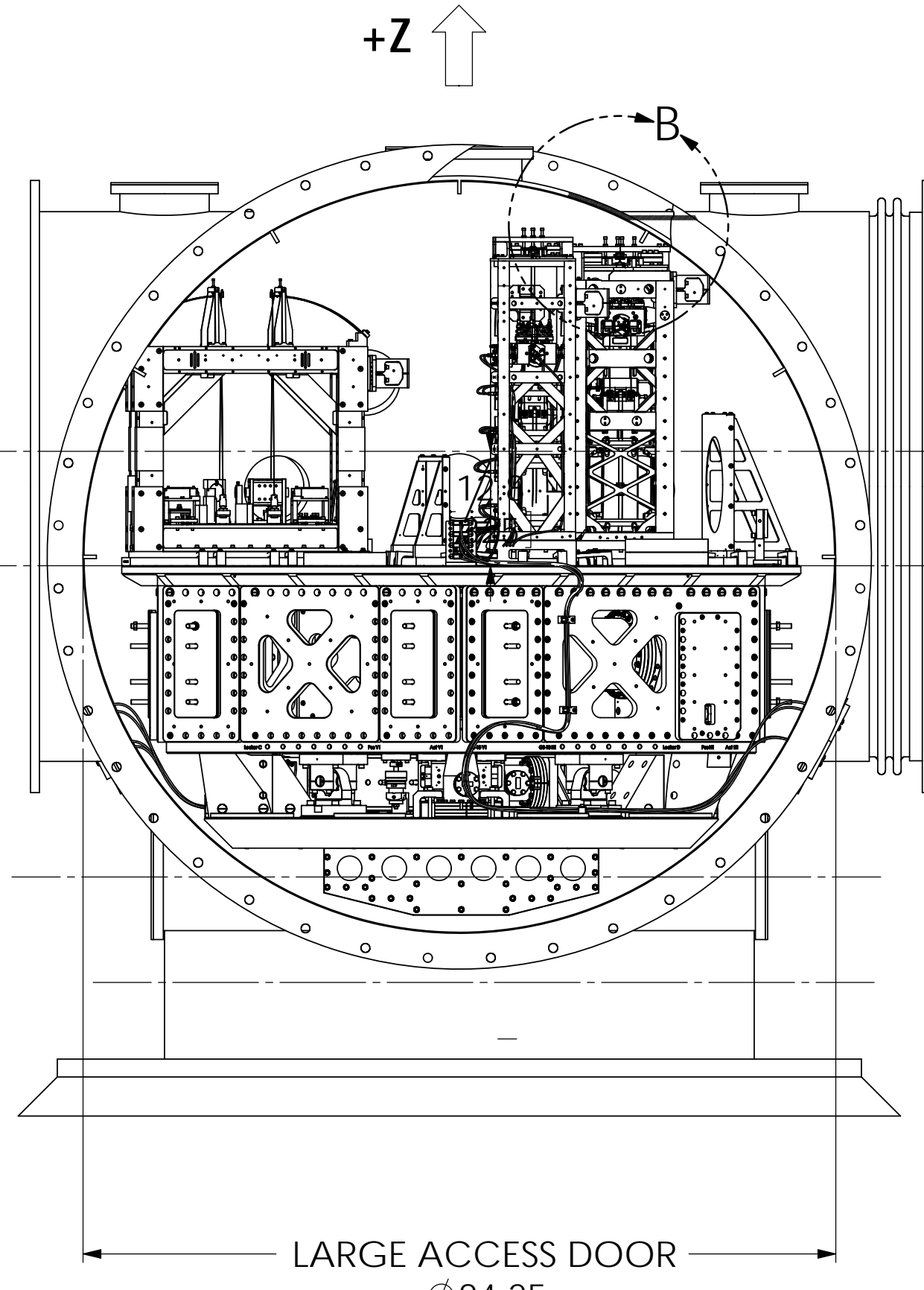


TOP VIEW

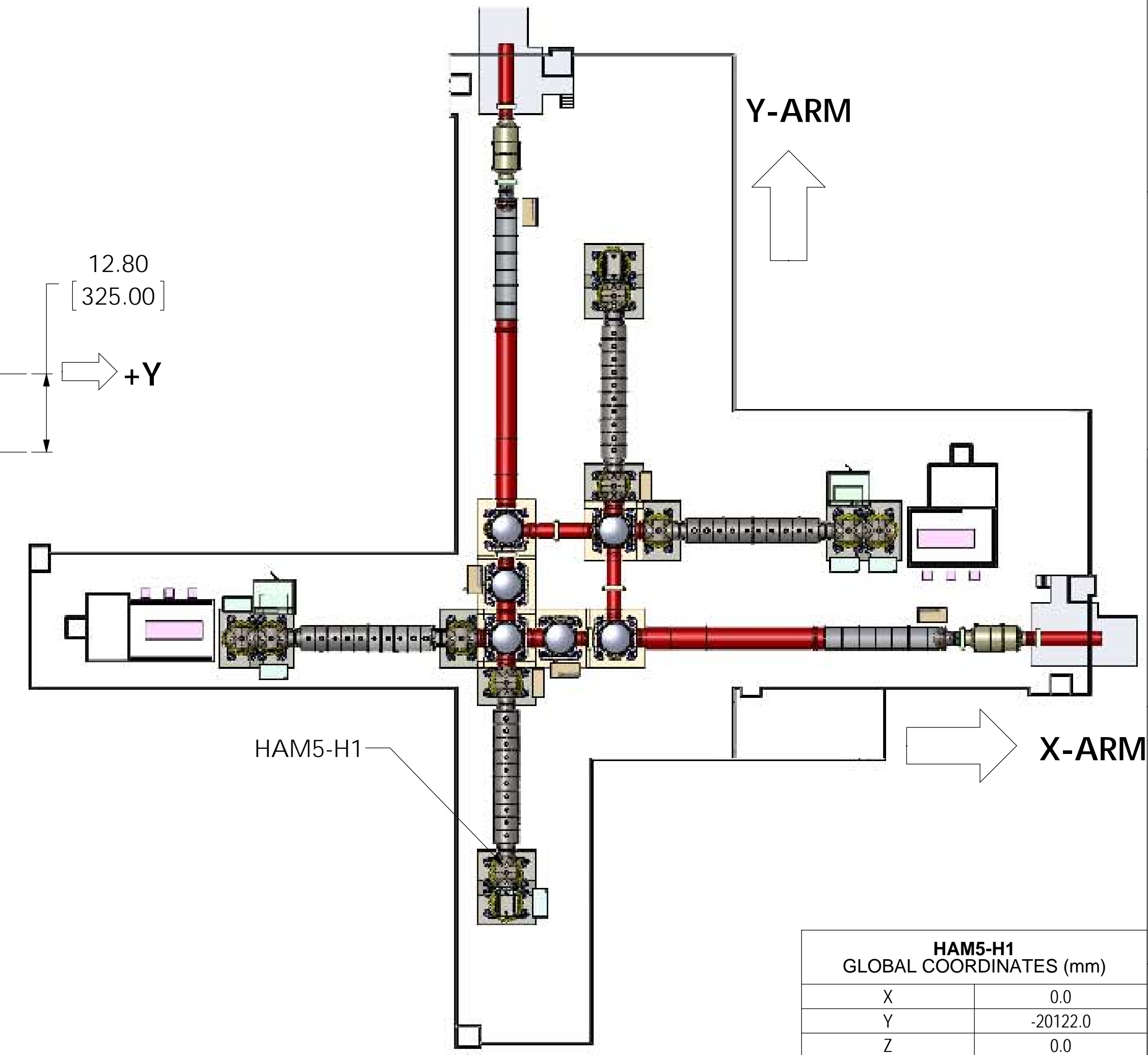
+Z



FRONT VIEW



RIGHT VIEW



Y-ARM

X-ARM

HAM5-H1 GLOBAL COORDINATES (mm)	
X	0.0
Y	-20122.0
Z	0.0

NOTES AND TOLERANCES: (UNLESS OTHERWISE SPECIFIED)

MATERIAL	--	FINISH	-- μinch
----------	----	--------	----------

LIGO CALIFORNIA INSTITUTE OF TECHNOLOGY MASSACHUSETTS INSTITUTE OF TECHNOLOGY	
SYSTEM	ADVANCED LIGO
SUB-SYSTEM	SUS
NEXT ASSY	

PART NAME		ALIGO SYSTEMS, HAM5-H1 TOP LEVEL CHAMBER ASSY	
DESIGNER	ED CHAVEZ	10 NOV 2009	
DRAFTER	C. TORRIS	15 NOV 2011	
CHECKER	SEE DCC	SEE DCC	
APPROVAL	SEE DCC	SEE DCC	
SIZE	D	DWG. NO.	D0901129
REV.	v7	SCALE: 1:16	PROJECTION:
		SHEET 1 OF 4	

SolidWorks Educational License
Instructional Use Only

AutoRecover: C:\D0901129 AutoLIGO Systems, HAM5-H1 Top Level Chamber Assembly, ALL PART PDM REV. X.070, DRAWING PDM REV. X.009

D1201315 SR3 BAFFLE ASSY
-D1003205-02 SR3 HR BAFFLE

D1201316 OPTLEV DLC ASSY
-D1101392 OPTLEV DLC MOUNT

D0901132 HLTS ASSY (SR3)
-D070447 HLTS

D0901133 HSTS ASSY (SRM)
-D020700 HSTS

D1201315 SR3 BAFFLE ASSY
-D1003205-04 SR3 AR BAFFLE

D1201332 TCS HWS OPTICS ASSY.
-D1101125 TCS HWS OPTIC LHAM5

D0901131 HAM-ISI TABLE ASSY
-D0900424 HAM-ISI TABLE

D1201314 SRM HR BAFFLE ASSY
-D1200141-02 SRM HR BAFFLE

D0901134 OFI ASSY
-D0900136 OFI

D1001139 BALANCE
MASS ASSY

11	D1101917	CABLE HARNESS, HAM 5	1
10	D1201332	AdvLIGO TCS HAM5-H1, XYZ Local CS for HWS Optics Assembly	1
9	D1201316	ALIGO, SUS, HAM5-H1, XYZ Local CS for OptLev DLC	1
8	D1201315	AdvLIGO SUS HAM5-H1, XYZ Local for SR3 HR-AR Baffle	1
7	D1201314	AdvLIGO SUS HAM5-H1, XYZ Local for SRM AR Baffle	1
6	D1001139	AdvLIGO HAM5-H1 ISI Table, Payload & Suspended Mass Assembly	1
5	D1000514	HEPI ASSEMBLY, HAM, aLIGO SEI	1
4	D0901134	AdvLIGO SUS HAM5-H1, XYZ Local CS for AOS FI	1
3	D0901133	AdvLIGO SUS HAM5-H1, XYZ LOCAL CS FOR HSTS (SRM)	1
2	D0901132	AdvLIGO SUS HAM5-H1, XYZ Local CS for HLTS (SR3)	1
1	D0901131	AdvLIGO SEI HAM5-H1, XYZ Local CS for ISI Table	1
ITEM NO.	PART NUMBER	DESCRIPTION	Full Complete /QTY.

PARTS LIST

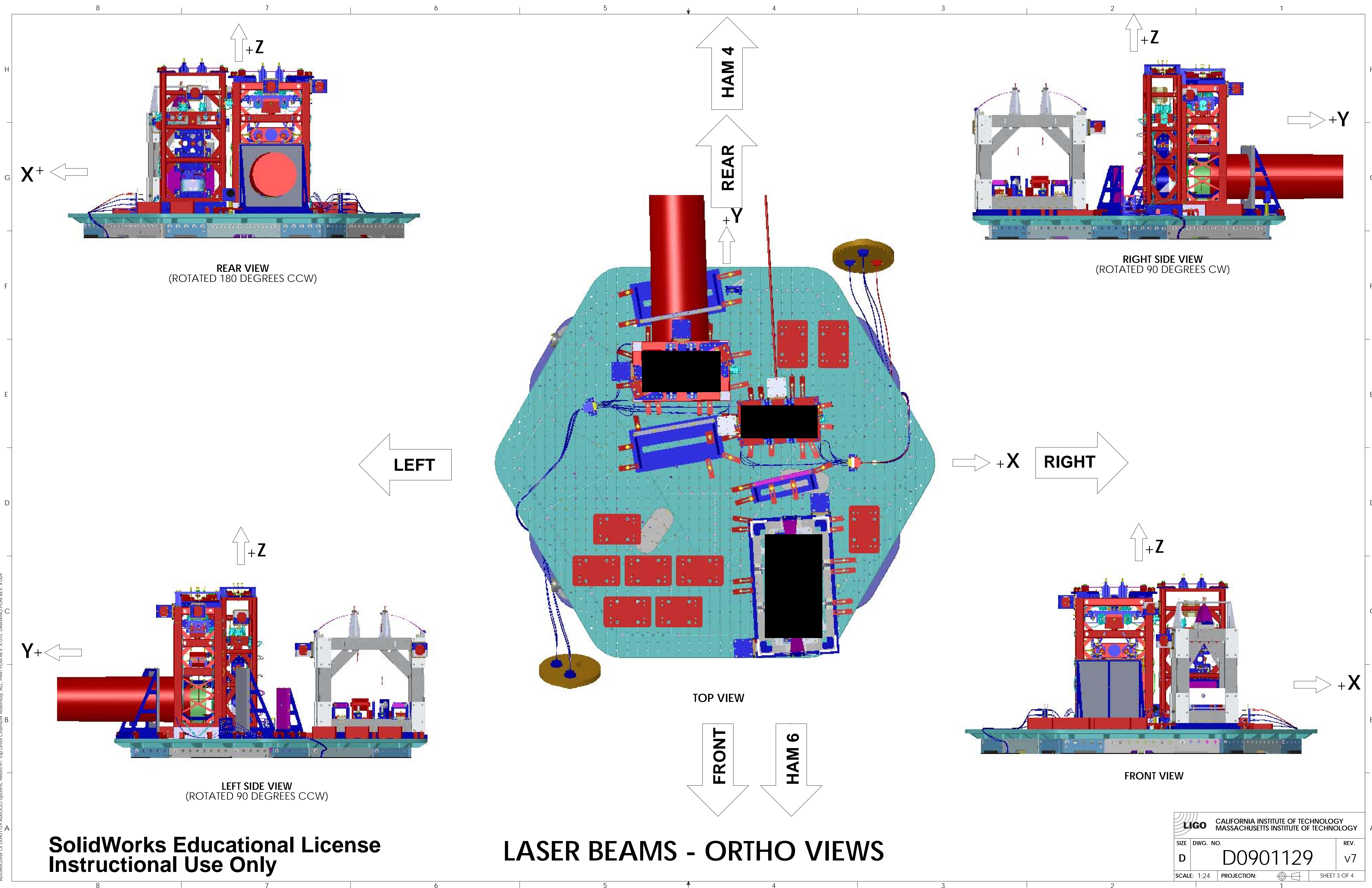
LIGO CALIFORNIA INSTITUTE OF TECHNOLOGY
MASSACHUSETTS INSTITUTE OF TECHNOLOGY

SIZE DWG. NO. REV.

D D0901129 v7

SCALE: 1:5 PROJECTION: SHEET 2 OF 4

SolidWorks Educational License
Instructional Use Only

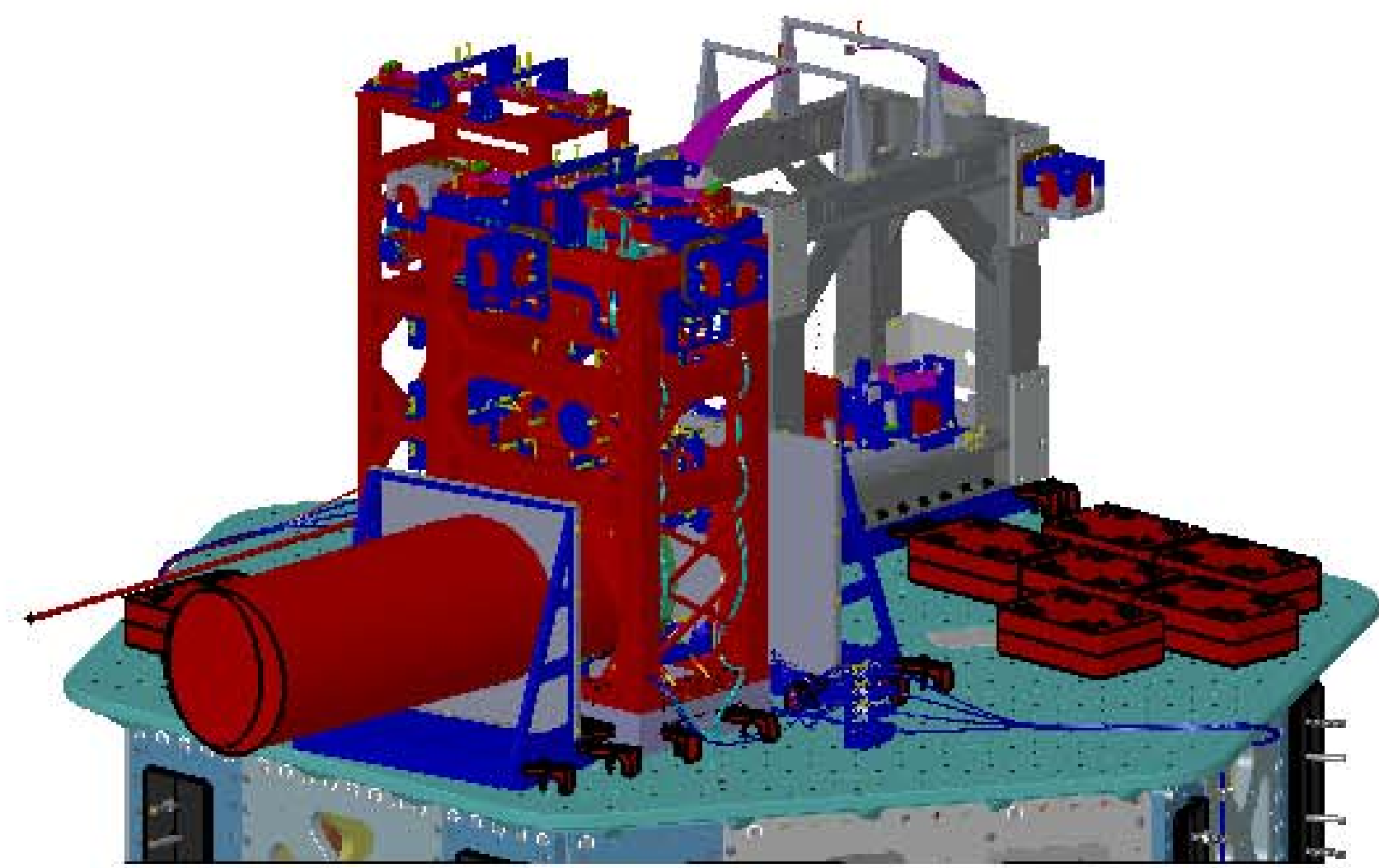


AutoRecover: C:\D901129\Autodesk Systems\HAM6-H1 Top Level Chamber Assembly - ALL PART PDM REV X.070.DRWING PDM REV X.009

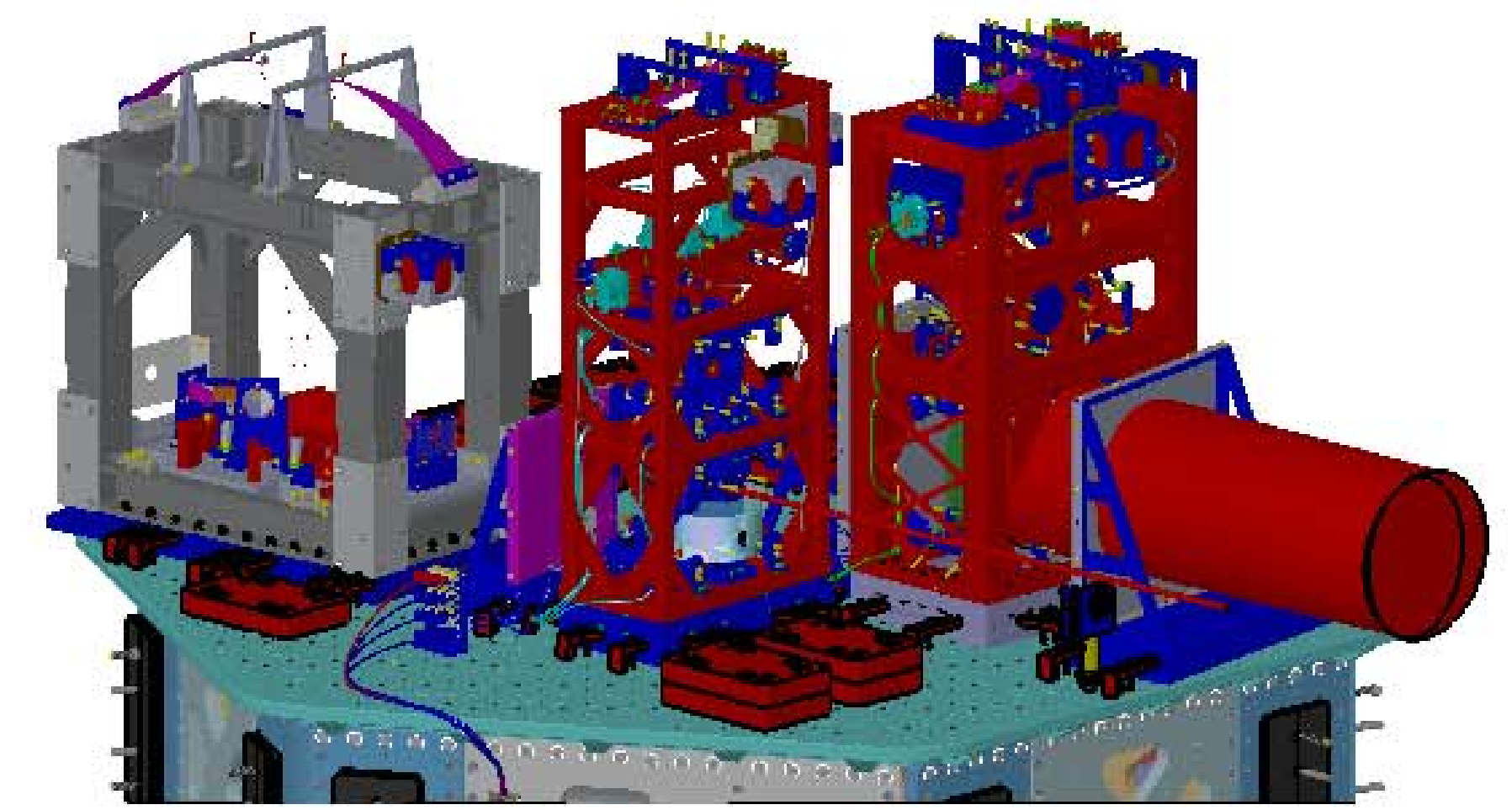
**SolidWorks Educational License
Instructional Use Only**

LASER BEAMS - ORTHO VIEWS

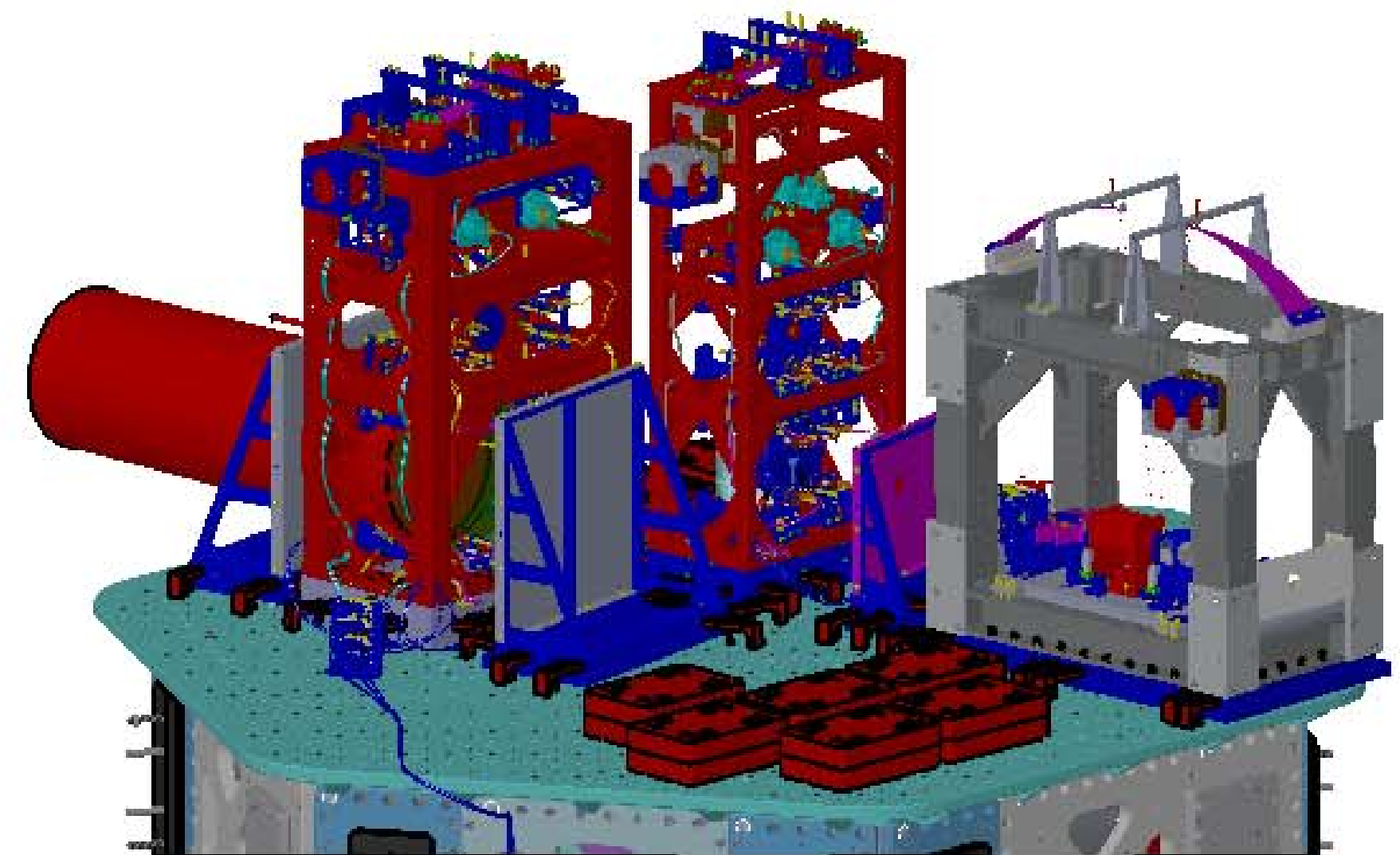
LIGO CALIFORNIA INSTITUTE OF TECHNOLOGY MASSACHUSETTS INSTITUTE OF TECHNOLOGY	
SIZE DWG. NO.	REV.
D D0901129	v7
SCALE: 1:24	PROJECTION: SHEET 3 OF 4



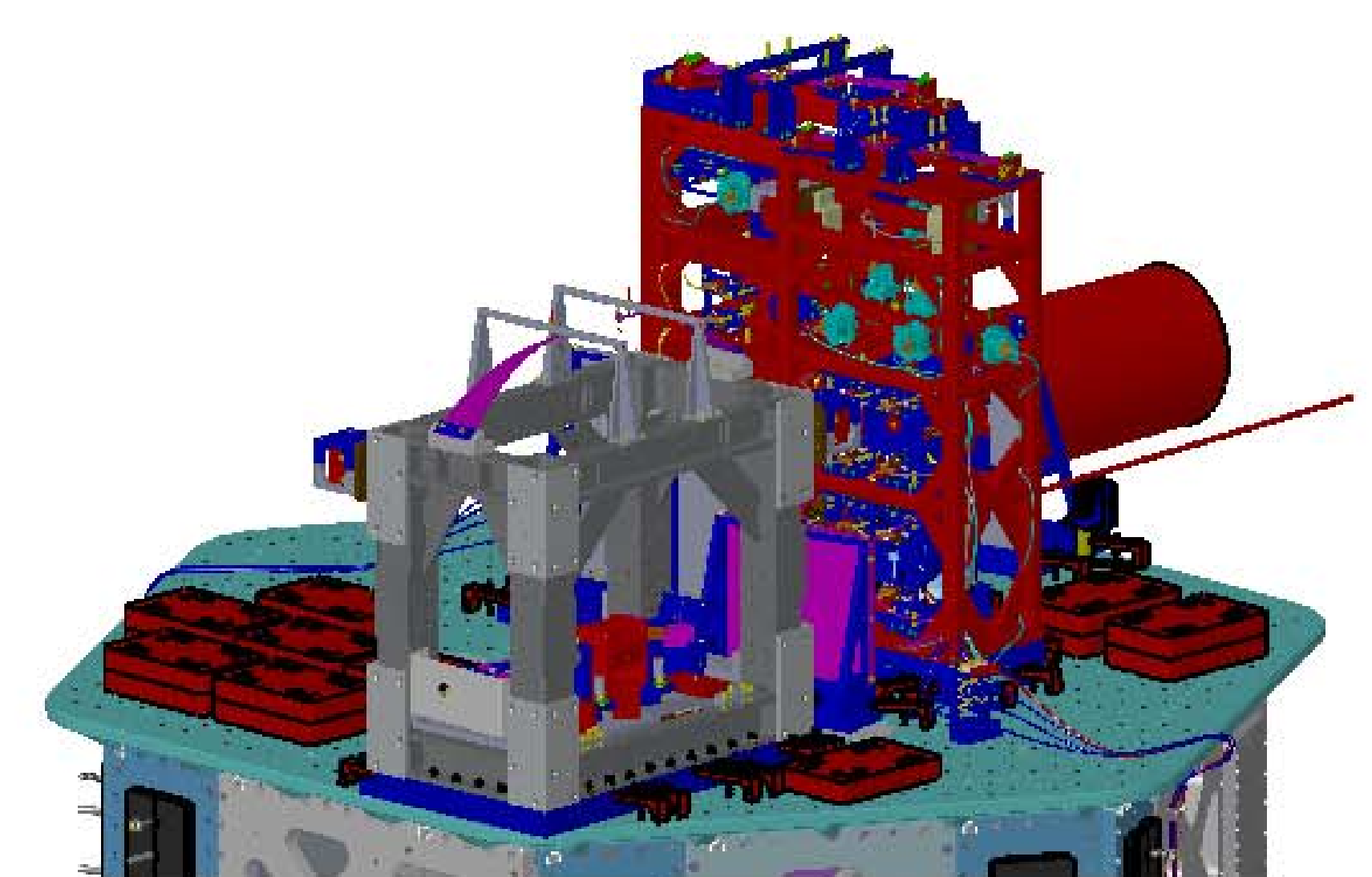
ISO REAR - LEFT



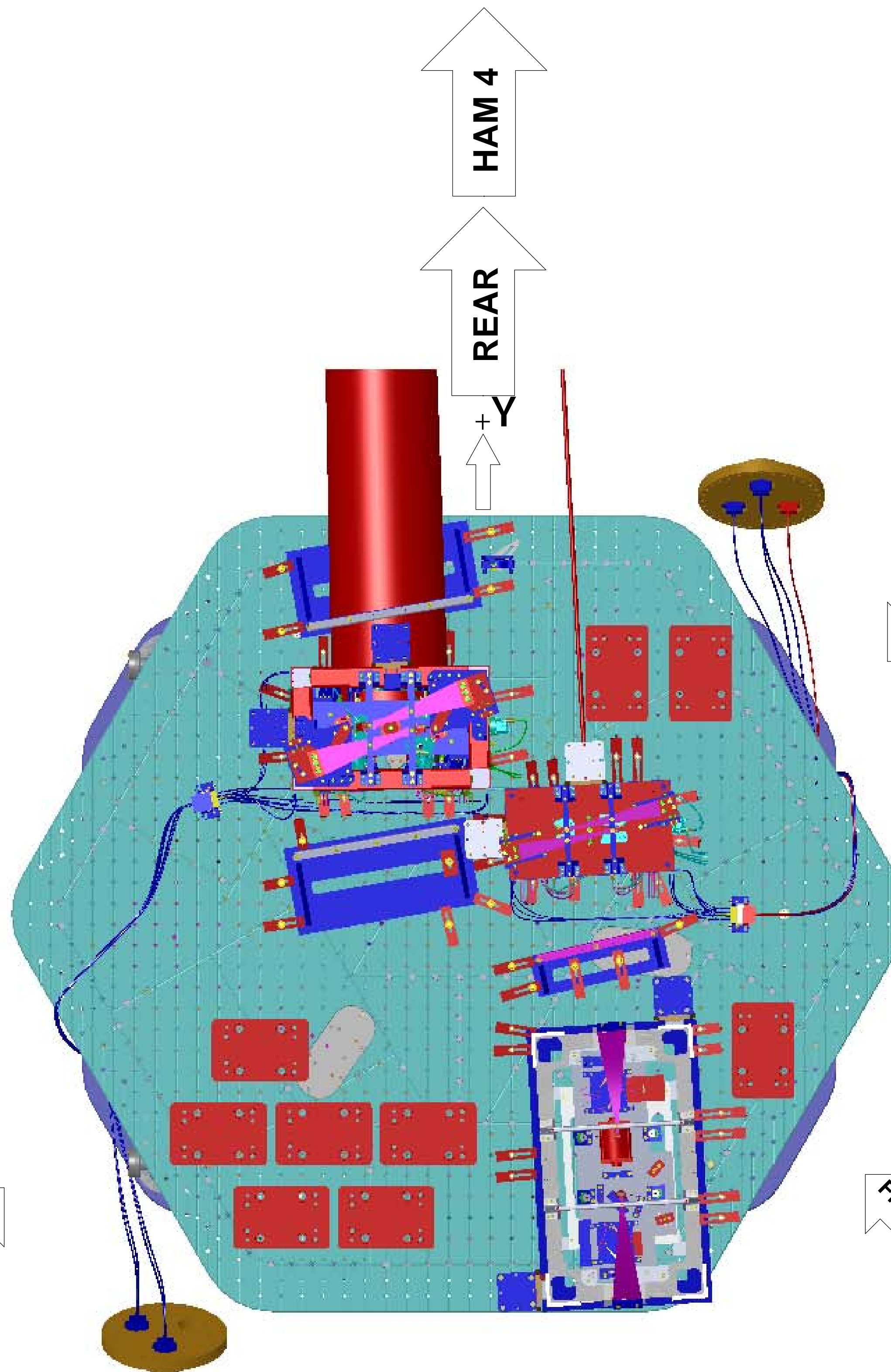
ISO REAR - RIGHT



ISO FRONT - LEFT



ISO FRONT - RIGHT



TOP VIEW

REAR L

REAR R

LEFT

+X RIGHT

FRONT L

FRONT R

HAM 4

REAR

+Y

FRONT

HAM 6

LASER BEAMS - ISO VIEWS

SolidWorks Educational License
Instructional Use Only

LIGO CALIFORNIA INSTITUTE OF TECHNOLOGY MASSACHUSETTS INSTITUTE OF TECHNOLOGY		
SIZE	DWG. NO.	REV.
D	D0901129	v7
SCALE: 1:24	PROJECTION:	SHEET 4 OF 4

AutoRecover of D:\0901129_Audio\ICO Systems - HAM-H1 Top Level Chamber Assembly - ALL PART PDM REV X.070 DRAWING PDM REV X.009