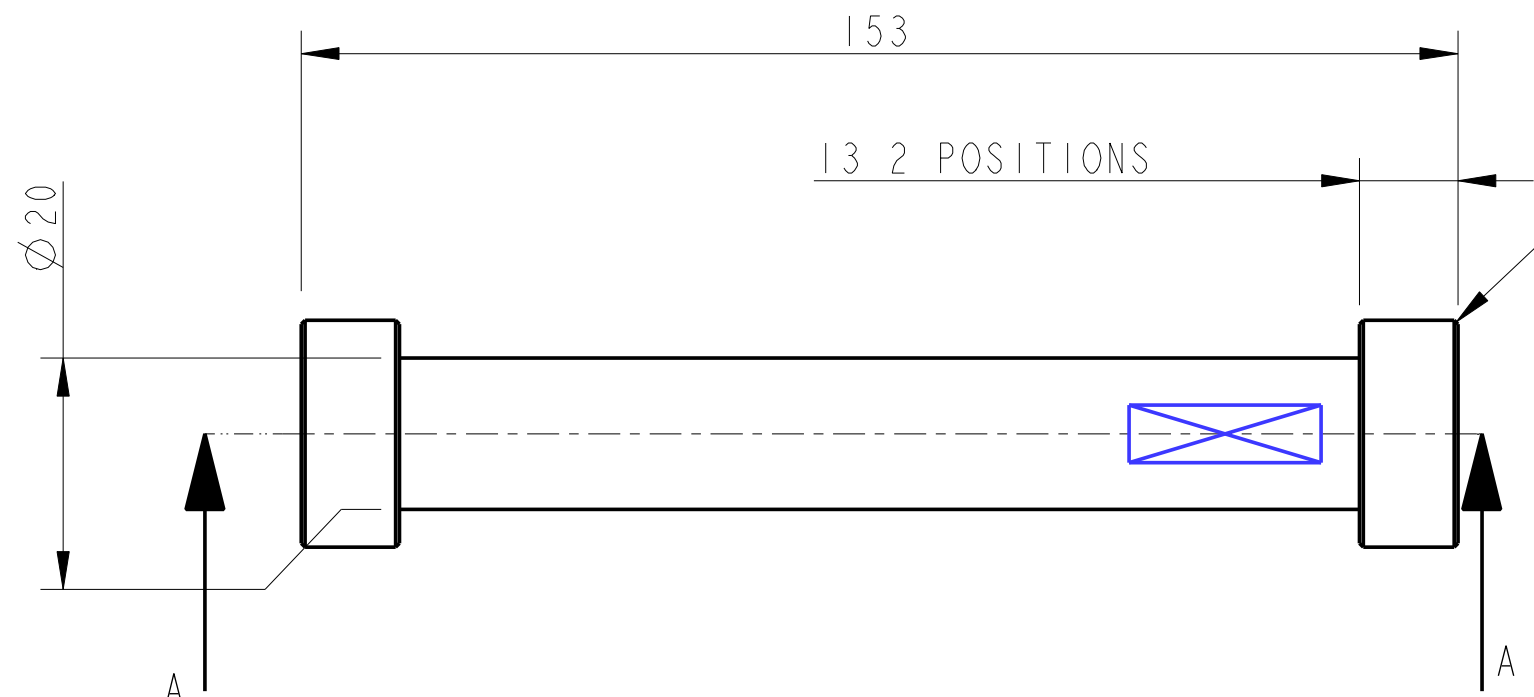
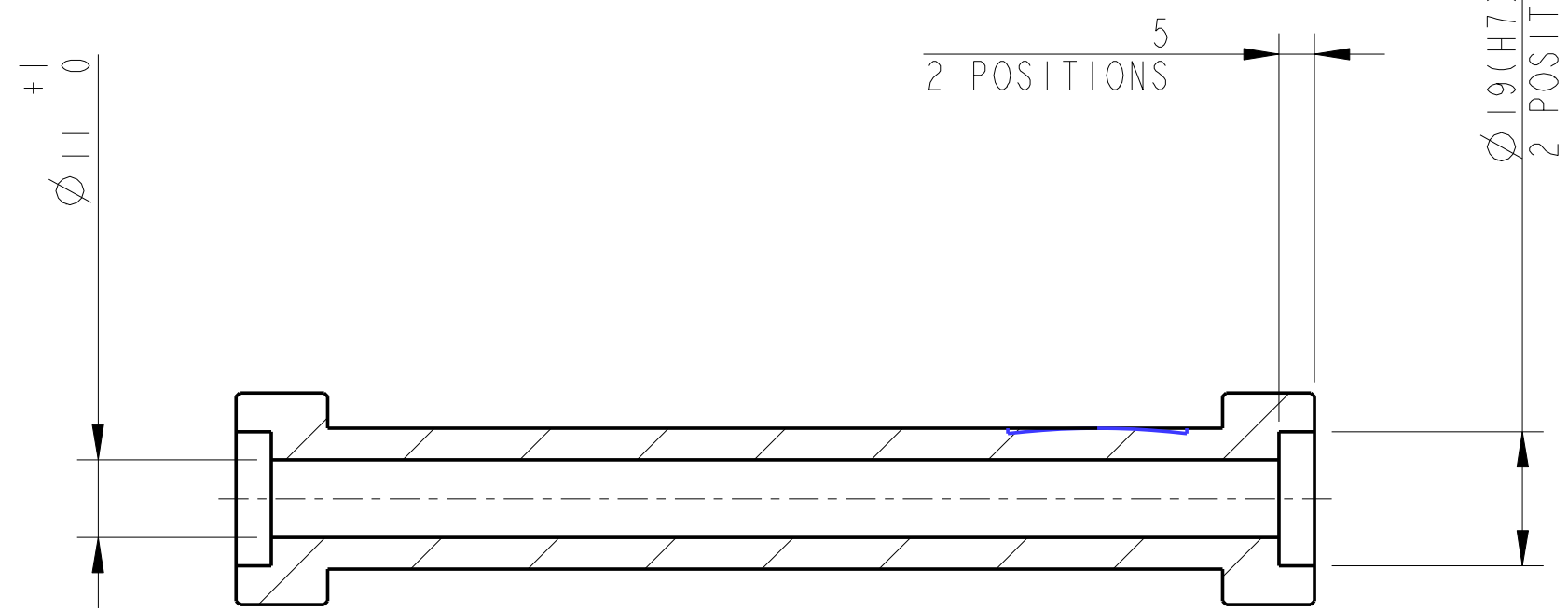
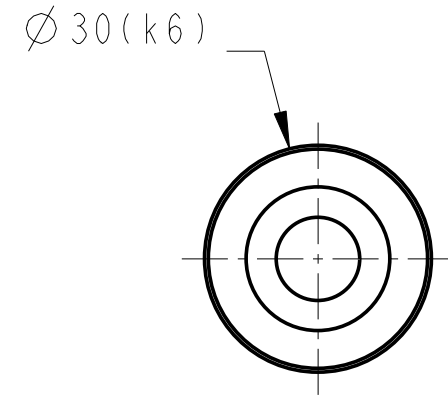


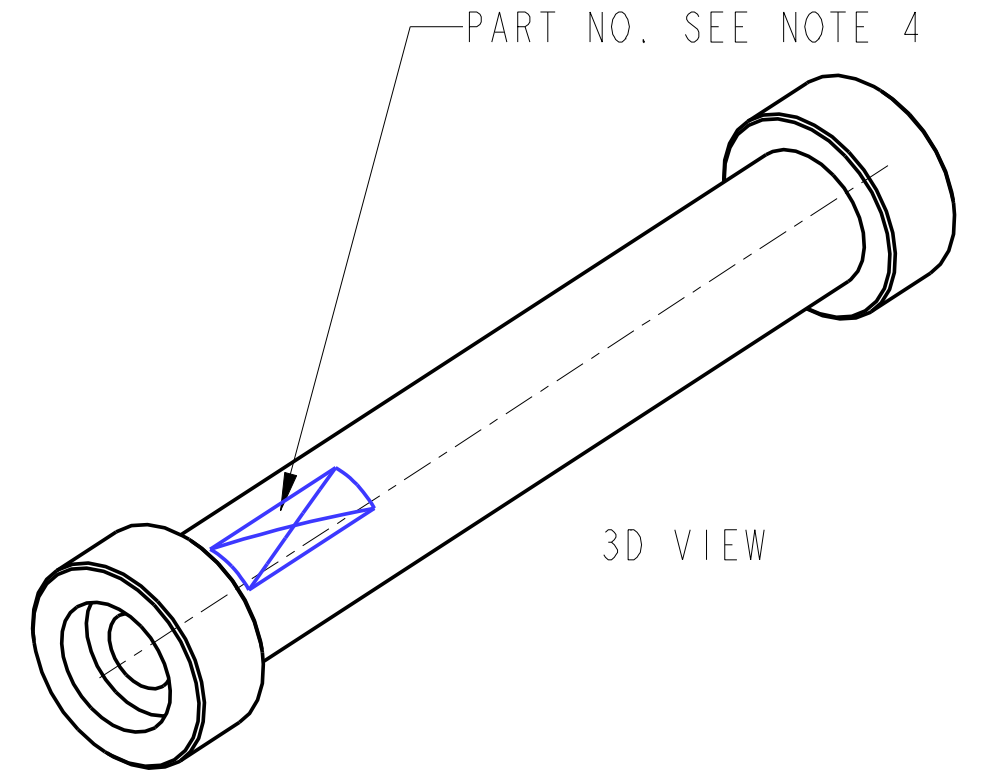
REV.	DATE	DCN #	DRAWING TREE #
A	17/OCT/06	E060242	



CHAMFER 0.5 X 45°  
4 PLACES



Ø 19 (H7)  
2 POSITIONS



NOTES: (UNLESS OTHERWISE SPECIFIED)		CALIFORNIA INSTITUTE OF TECHNOLOGY MASSACHUSETTS INSTITUTE OF TECHNOLOGY 1GR, GLASGOW UNIVERSITY GEO 600 GROUP RUTHERFORD APPLETON LABORATORIES													
<ol style="list-style-type: none"> <li>REMOVE ALL SHARP EDGES, R.02 MIN.</li> <li>DO NOT SCALE FROM DRAWING.</li> <li>ALL MACHINING FLUIDS SHALL BE WATER SOLUBLE AND FREE OF SULFUR, CHLORINE AND SILICONE, SUCH AS CINCINNATI MILACRON'S CIMTECH 410 (STAINLESS STEEL)</li> <li>SCRIBE, ENGRAVE OR STAMP DRAWING PARTNUMBER ON NOTED SURFACE OF PART AND A THREE DIGIT SERIAL NUMBER. SERIAL NUMBERS START AT 001 FOR THE FIRST PART AND PROCEED CONSECUTIVELY. USE .07" HIGH CHARACTERS. EXAMPLE: D020188- 001. A VIBRATORY TOOL MAY BE USED.</li> </ol>		DIMENSIONS ARE IN mm [INCHES] TOLERANCES: X.XX ±0.2 mm ANGULAR ±0.25 °													
MATERIAL: AL ALLOY 6061 T6		SYSTEM <b>ADVANCED LIGO</b>													
FINISH: CLEAN, DE-GREASE √μm [μin] Ra = 1.6		SUB-SYSTEM <b>SUS</b>													
<table border="1"> <tr> <th></th> <th>NAME</th> <th>DATE</th> </tr> <tr> <td>DRAWN</td> <td>I. WILMUT</td> <td>19/Sep/06</td> </tr> <tr> <td>CHECKED</td> <td>J'OD</td> <td>17/OCT/06</td> </tr> <tr> <td>APPROVED</td> <td>RJG</td> <td>17/OCT/06</td> </tr> </table>			NAME	DATE	DRAWN	I. WILMUT	19/Sep/06	CHECKED	J'OD	17/OCT/06	APPROVED	RJG	17/OCT/06	NEXT ASSY <b>QUAD N-PTYPE TOP STAGE TOOLING</b>	
	NAME	DATE													
DRAWN	I. WILMUT	19/Sep/06													
CHECKED	J'OD	17/OCT/06													
APPROVED	RJG	17/OCT/06													
		PART NAME <b>STRAIGHTENING ROLLER (FOR TOP STAGE BLADE TOOLING)</b>													
SCALE 1:1		DRG. NO. <b>D060365</b>	REV. <b>B</b>												
PROJECTION:		SHEET 1 OF 1													