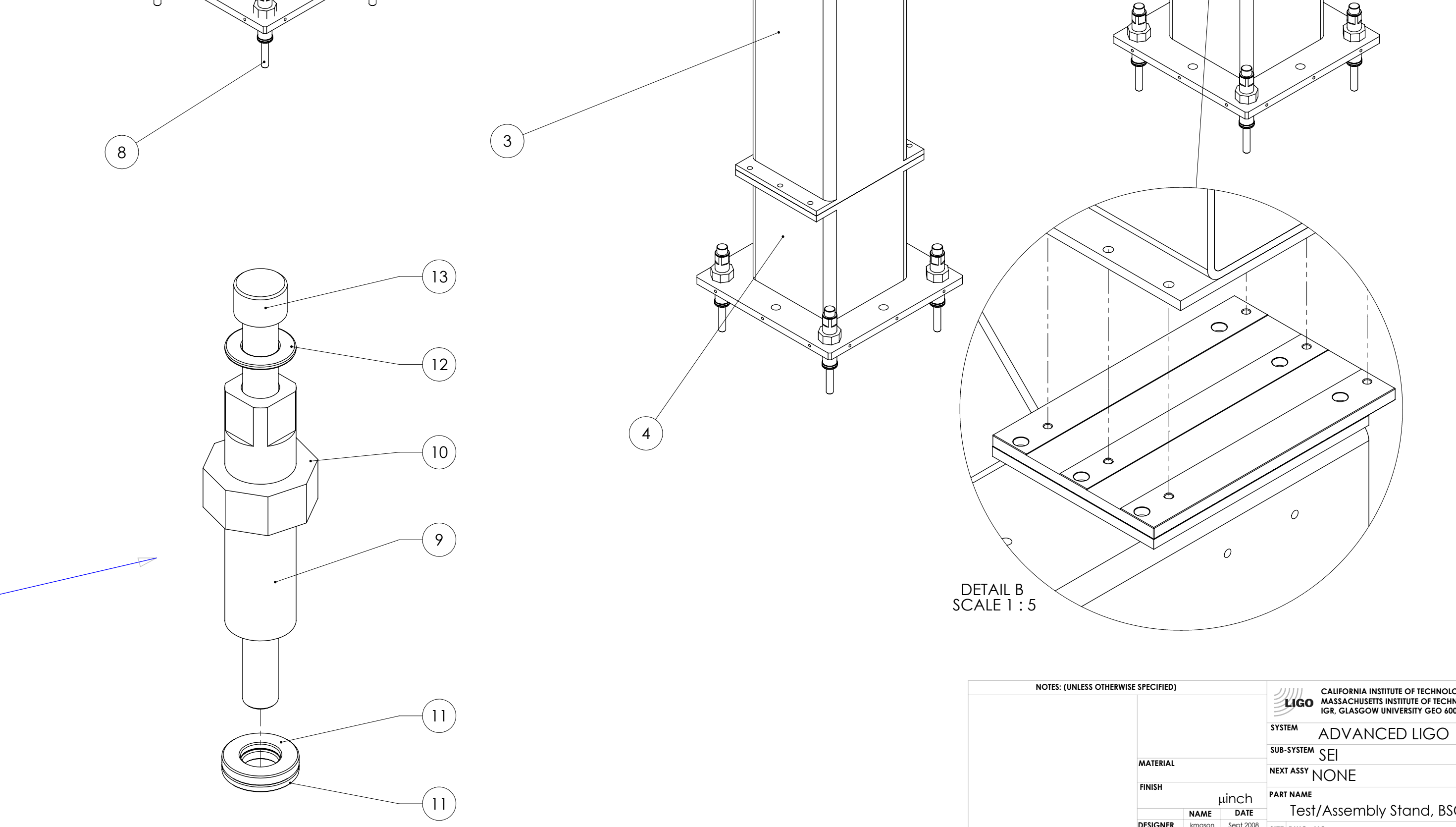


ITEM NO.	PART NUMBER	DESCRIPTION	BSC Version/QTY.	HAM Version/QTY.	
1	D050260	Test/Assembly Stand, Support Tube	2	2	
2	D050259	Test/Assembly Stand, BSC Support tube	2	2	
3	D050261	Test/Assembly Stand, LEG spacer	4	-	
4	D050262	Test/Assembly Stand, Leg	4	4	
5	D050263	Test/Assembly Stand, Gusset	4	-	
6	D050409	Test/Assembly Stand, Gusset Spacer Plate	4	-	
7	D050408	Test/Assembly Stand, BSC Support Tube, Support Spacer	4	4	
8	D080464	Leveling foot	Test/Assembly Stand, Leveling Foot ASSM	16	-
14	McMaster 91950A033	1/2" Flat Washer, 316 SST, pkg 25	144	96	
15	McMaster 92316A714	1/2"-13 x 1-1/4", Full Thread Grade 8 Hex Flange Cap Screw, pkg 25	40	24	
11	McMaster 92316A716	1/2"-13 x 1-1/2", Full Thread, Grade 8 Hex Flange Cap Screw, pkg 25	40	24	
12	McMaster 92316A720	1/2"-13 X 2", Threaded 1.25", Grade 8 Hex Flange Cap Screw, pkg 10	24	-	
13	McMaster 91251A712	1/2"-13 X 1", Full Tread, Black-Oxide Socket Head Cap Screw, pkg 10	40	24	
14	McMaster 95479A121	Hex Nut 1/2"-13 Thread, Black Oxide Grade 5 Steel, pkg 25	24	-	
15	D0901041_HAM_to_BSC_Test_Stand_Adapter	HAM to BSC Test Stand Adapter,	-	2	
16	SHCS 3/8"-24 x 1.5"	HAM to BSC Test Stand Adapter, Adapter to Stand Screws	-	8	
17	SHCS 3/8"-24 x 3.5"	HAM to BSC Test Stand Adapter, HAM Thru Adapter to Stand Screws	-	14	
18	SHIM STOCK (.001"-.010")	For finnal levelling of tubes to BSC or HAM	As Needed	As Needed	

ITEM NO.	PART NUMBER	DESCRIPTION	QTY.
9	D050331	Test/Assembly Stand, Leveling foot, thru bolt	1
10	D050332	Test/Assembly Stand, Leveling foot, Nut	1
11	McM_91131A090	McMaster 91131A090 Black Oxide Steel Self-Aligning Setup Washer Set, 3/4" Size, 25/32" Male ID	1
12	McM_90126A036	McMaster 90126A036 SAE Flat Washer 3/4" Size, 13/16" ID, 1-1/2" OD, .108" min Thk Zinc-Plated Steel	1
13	McMaster 91257A866	McMaster 91257A866 Grade 8 Hex Head Cap Screw Zinc Yellow-Plated, 3/4"-10 Thread, 10" Length	1



NOTES: (UNLESS OTHERWISE SPECIFIED)

**LIGO** CALIFORNIA INSTITUTE OF TECHNOLOGY  
 MASSACHUSETTS INSTITUTE OF TECHNOLOGY  
 IGR, GLASGOW UNIVERSITY GEO 400 GROUP

SYSTEM: ADVANCED LIGO  
 SUB-SYSTEM: SEI  
 NEXT ASSY: NONE

FINISH: **winch**  
 PART NAME: Test/Assembly Stand, BSC

DESIGNER: **Imason** DATE: **Sept 2008**  
 DRAWN: **Imason** DATE: **Feb 2009**  
 CHECKED: **Imason**

SIZE DWG. NO.: **D**  
 D080464  
 SCALE: 1:20 PROJECTION: **AS SHOWN** SHEET 1 OF 1

D080464 - PART PDM REV: X-009 - DRAWING PDM REV: X-011