

4

3

2

1

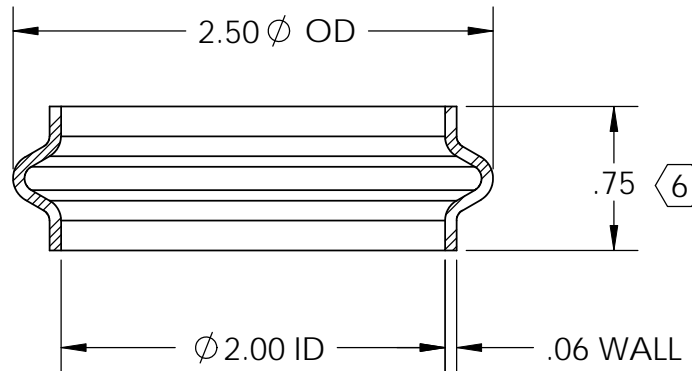
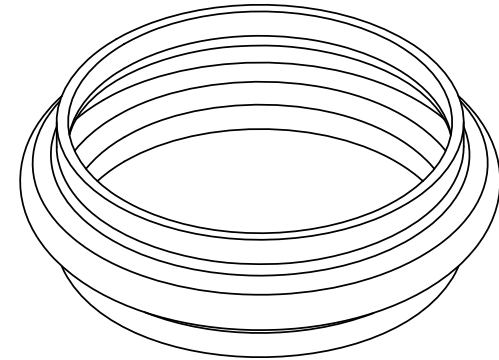
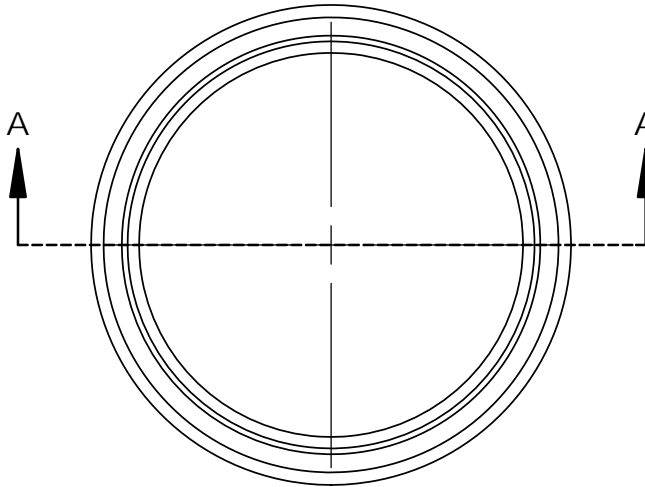
NOTES CONTINUED:

⑤ SCRIBE, ENGRAVE, OR MECHANICALLY STAMP (NO INKS OR DYES) DRAWING PART NUMBER AND REVISION ON NOTED SURFACE FOLLOWED ON THE NEXT LINE BY A THREE DIGIT SERIAL NUMBER. SERIAL NUMBERS START AT 001 FOR THE FIRST ARTICLE AND PROCEED CONSECUTIVELY. USE .07" HIGH CHARACTERS. EXAMPLE: DXXXXXX-VY, S/N 001. A VIBRATORY TOOL MAY BE USED.

⑥ EXPANDED LENGTH: .75"  
COMPRESSED LENGTH: .25"

7. THE VITON USED IN THE BELLOW CAN BE COMMERCIAL OFF THE SHELF GRAD VITON, HOWEVER WE DO ASK YOU TO SUPPLY THE MATERIAL CERTS AND TRY PURCHASING IT FROM DUPONT, 3M, PARKER AND PARCO. IF REQUIRED LIGO STAFF CAN WORK WITH YOU ON SELECTING A VENDOR FOR MANUFACTURING THE CUSTOM BELLOW OR ORDER THESE PARTS FOR YOU THROUGH.

REV.	DATE	DCN #	DRAWING TREE #
-	-	E0900200-v1	-
-	-	-	-
-	-	-	-



SECTION A-A

NOTES AND TOLERANCES: (UNLESS OTHERWISE SPECIFIED)

DIMENSIONS ARE IN INCHES

TOLERANCES:  
XX ± 0.01  
XXX ± 0.005

ANGULAR ± 0.5°

1. INTERPRET DRAWING PER ASME Y14.5-1994.
2. REMOVE ALL SHARP EDGES, R.02 MIN.
3. DO NOT SCALE FROM DRAWING.
4. ALL MACHINING FLUIDS SHALL BE WATER SOLUBLE AND FREE OF SULFUR, CHLORINE AND SILICONE, SUCH AS CINCINNATI MILACRON'S CIMTECH 410.

MATERIAL  
Rubber Viton (see notes)

FINISH  
N/A

**LIGO** CALIFORNIA INSTITUTE OF TECHNOLOGY  
MASSACHUSETTS INSTITUTE OF TECHNOLOGY

SYSTEM: **ADVANCED LIGO** SUB-SYSTEM: **COC**

NEXT ASSY: **Optic Container**

PART NAME			Wedge Plate Adjuster Bellow		
DESIGNER		SIZE	DWG. NO.	REV.	
DRAFTER	ED CHAVEZ	14 JUL 2009	A	D0901311	v1
CHECKER	REFER TO DCN E0900200		SCALE: 1:1	PROJECTION:	⊘
APPROVAL	REFER TO DCN E0900200		SHEET 1 OF 1		

4

3

2

1