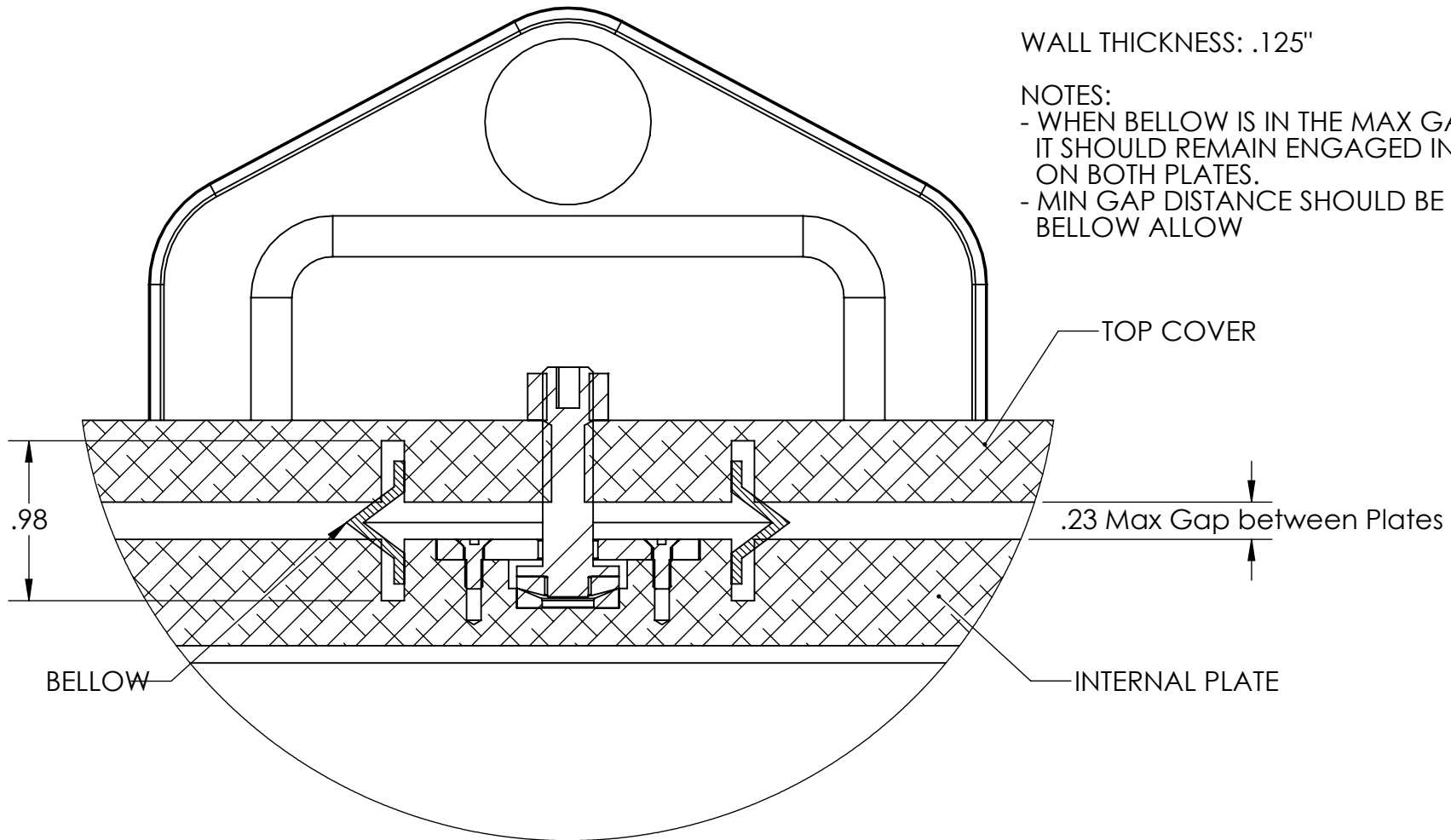


MATERIAL: VITON RUBBER D0901311-v1

WALL THICKNESS: .125"

NOTES:

- WHEN BELLOW IS IN THE MAX GAP POSITION IT SHOULD REMAIN ENGAGED IN THE GROOVES ON BOTH PLATES.
- MIN GAP DISTANCE SHOULD BE WHAT THE BELLOW ALLOW



DETAIL B

REQUEST FOR INFORMATION ONLY (RFI ONLY)