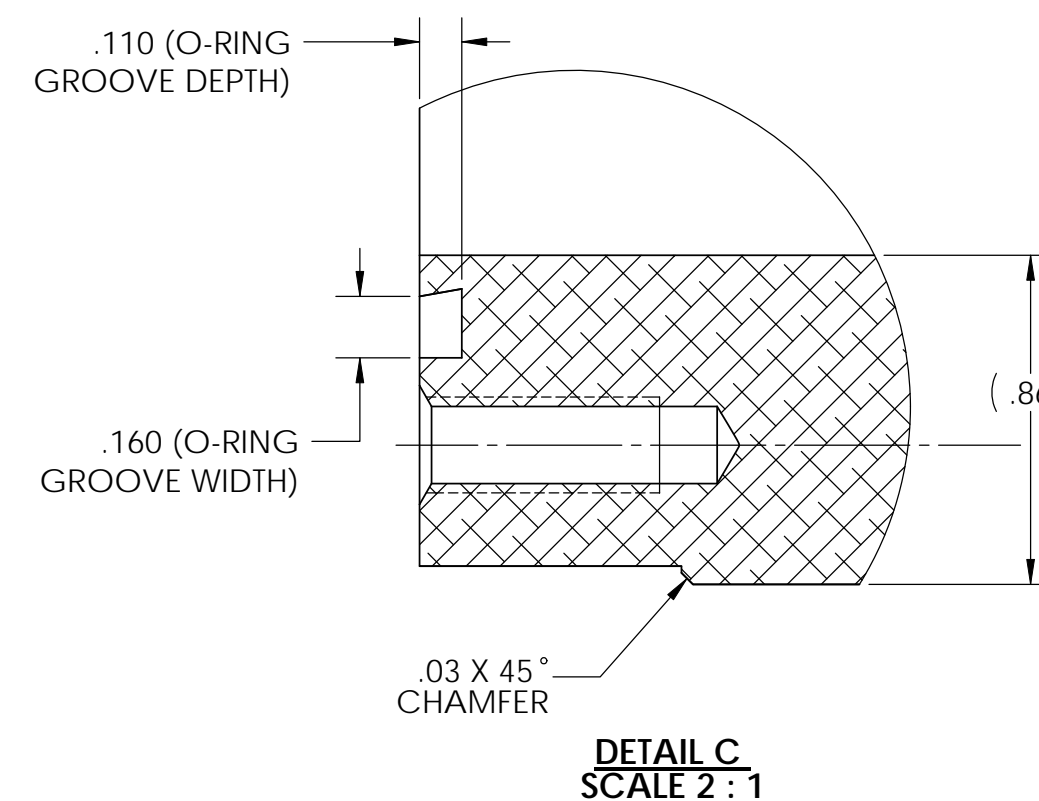
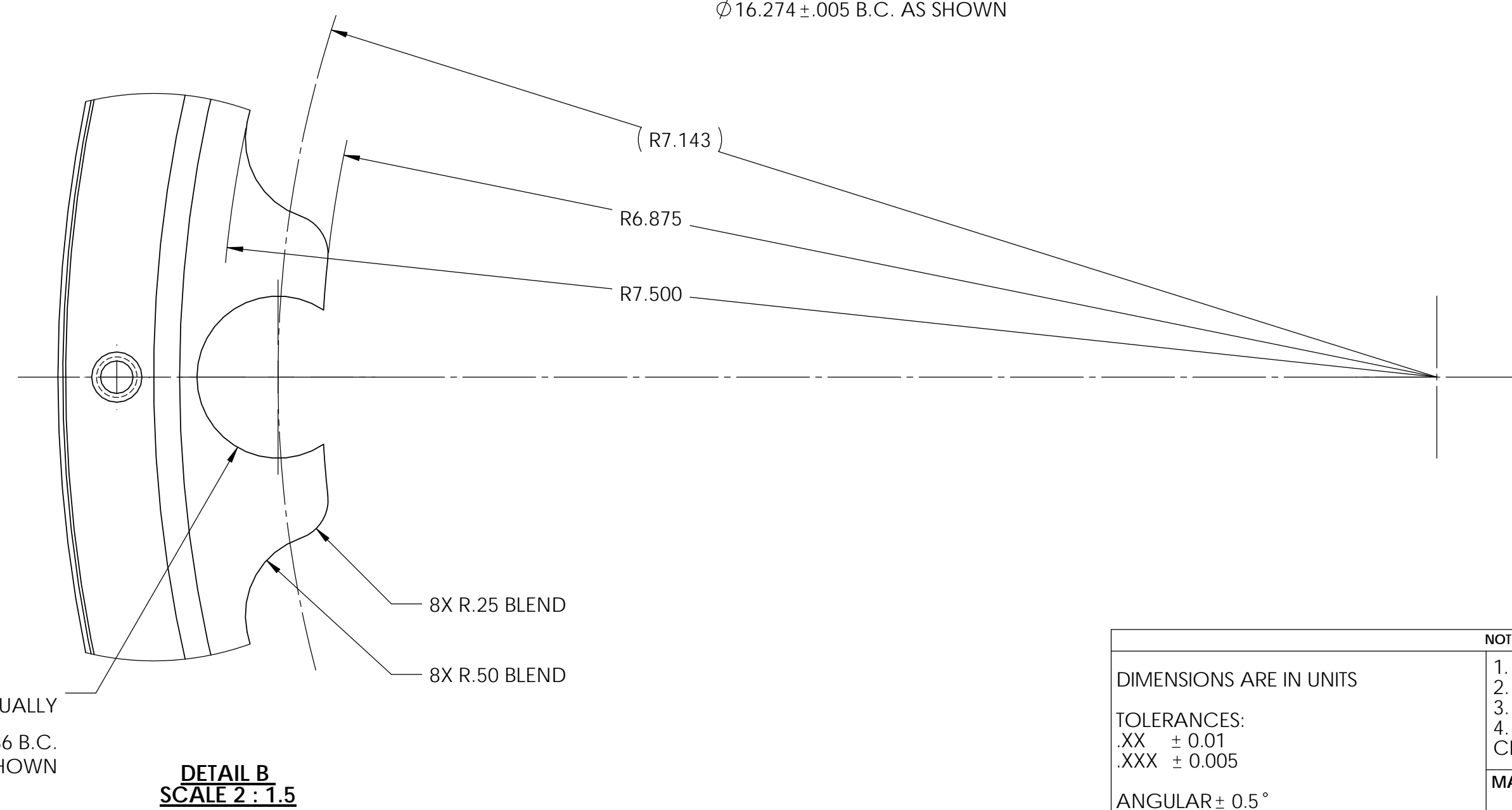
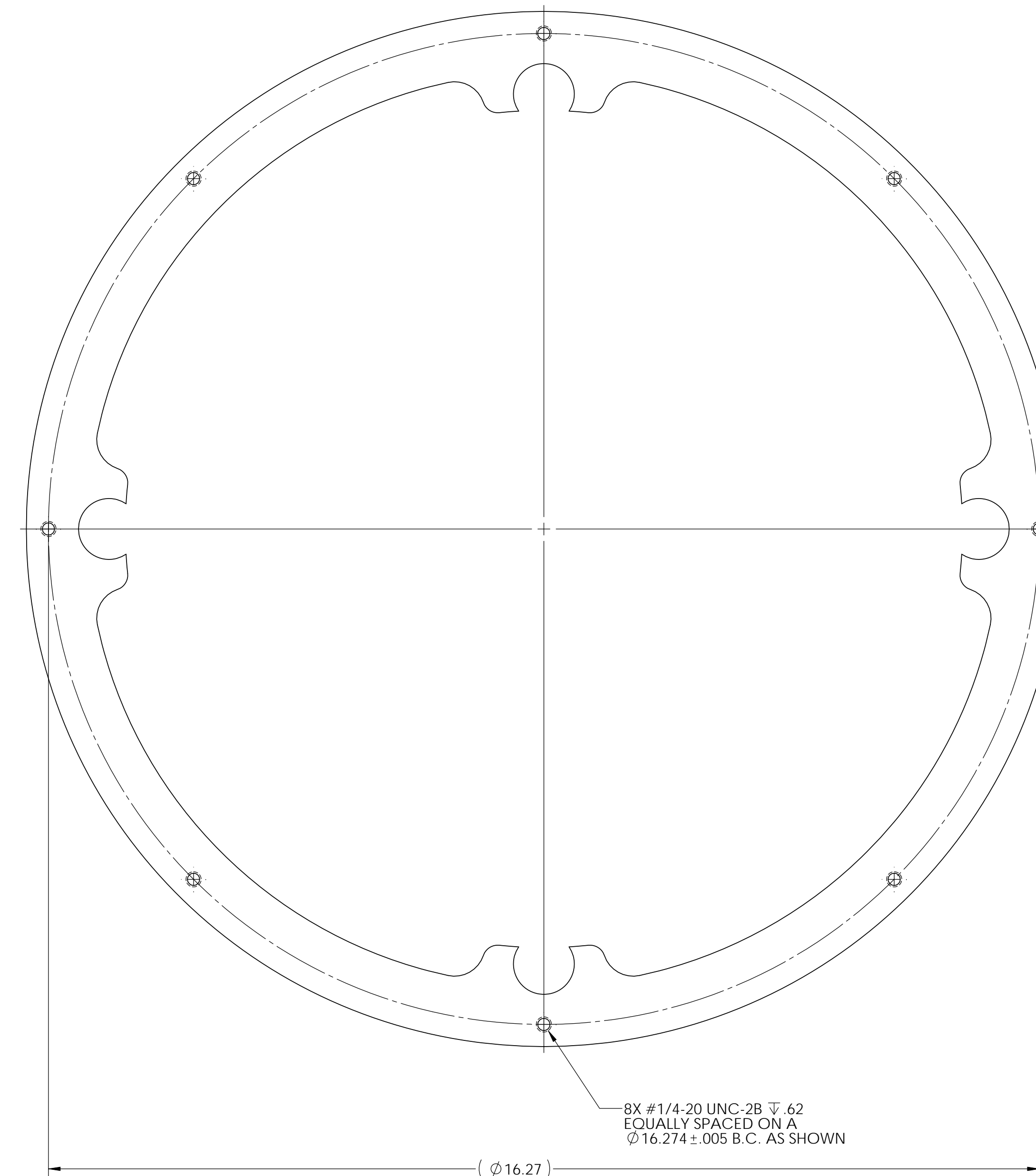
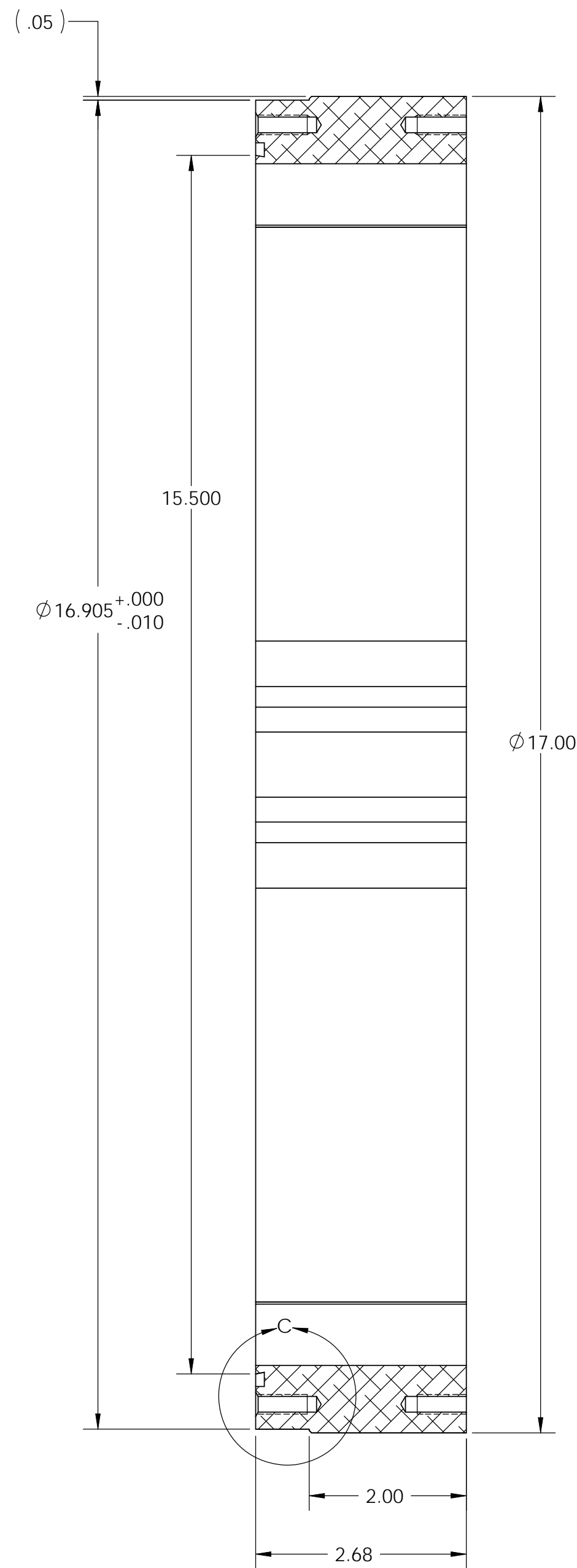
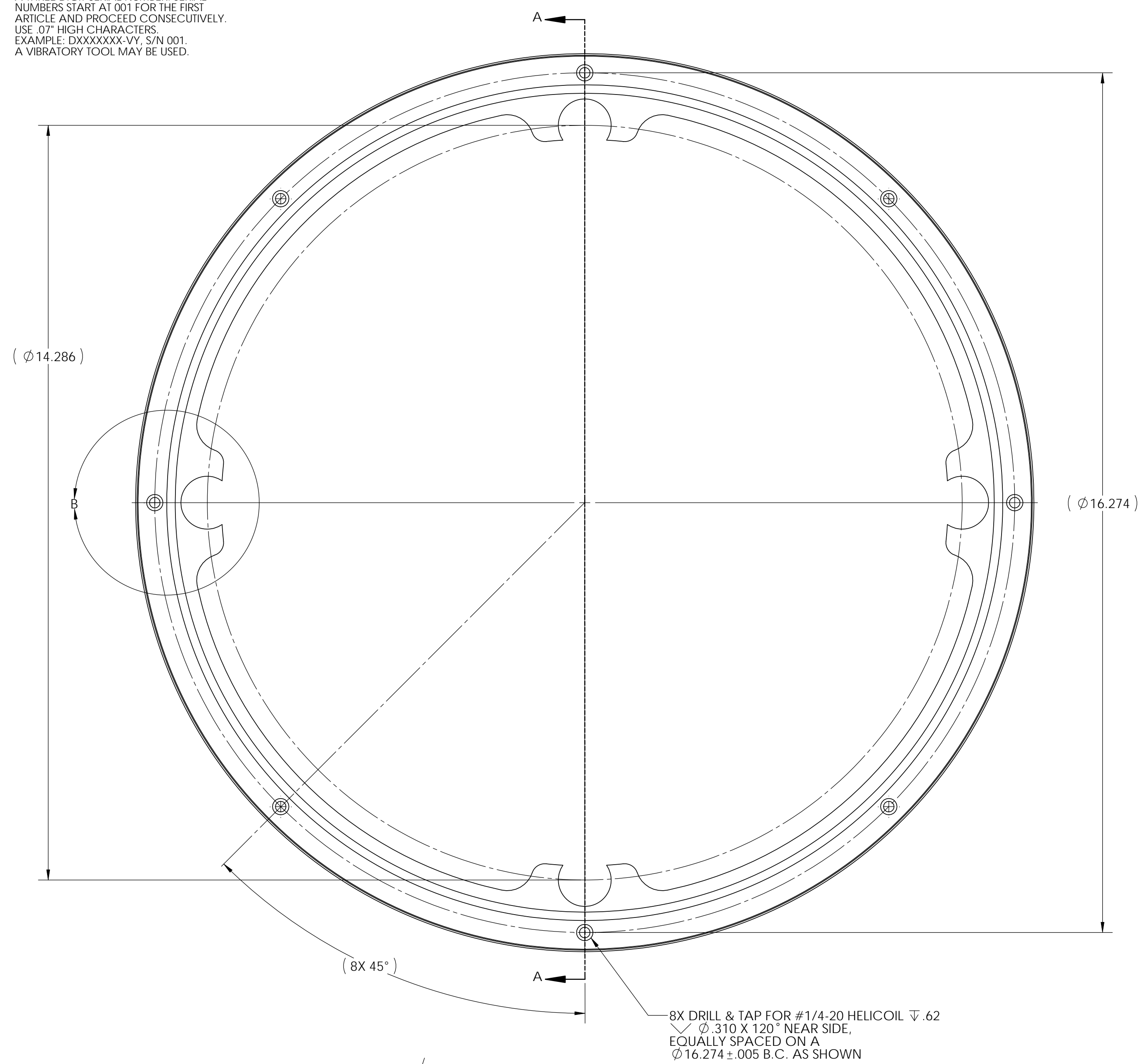


NOTES CONTINUED:  
 5. SCRIBE, ENGRAVE, OR MECHANICALLY STAMP (NO INKS OR DYES) DRAWING PART NUMBER AND REVISION ON NOTED SURFACE FOLLOWED ON THE NEXT LINE BY A THREE DIGIT SERIAL NUMBER. SERIAL NUMBERS START AT 001 FOR THE FIRST ARTICLE AND PROCEED CONSECUTIVELY. USE .07" HIGH CHARACTERS. EXAMPLE: DXXXXXX-VY, S/N 001. A VIBRATORY TOOL MAY BE USED.

REV.	DATE	DCN #	DRAWING TREE #
-	-	REFER TO E0900200-v1	-
-	-	-	-
-	-	-	-



DIMENSIONS ARE IN UNITS		NOTES AND TOLERANCES: (UNLESS OTHERWISE SPECIFIED)		PART NAME	
TOLERANCES: XX ± 0.01 XXX ± 0.005		1. INTERPRET DRAWING PER ASME Y14.5-1994. 2. REMOVE ALL SHARP EDGES, R.02 MIN. 3. DO NOT SCALE FROM DRAWING. 4. ALL MACHINING FLUIDS SHALL BE WATER SOLUBLE AND FREE OF SULFUR, CHLORINE AND SILICONE, SUCH AS CINCINNATI MILACRON'S CIMTECH 410.		Base, Ring, CP Optic Container	
ANGULAR ± 0.5°		MATERIAL: 6061-T6 Alum FINISH: 32 μinch		DESIGNER: 15 JUN 2009	
		MATERIAL: 6061-T6 Alum FINISH: 32 μinch		DRAFTER: ED CHAVEZ 14 JUL 2009	
		MATERIAL: 6061-T6 Alum FINISH: 32 μinch		CHECKER: REFER TO E0900200-v1	
		MATERIAL: 6061-T6 Alum FINISH: 32 μinch		APPROVAL: REFER TO E0900200-v1	
		MATERIAL: 6061-T6 Alum FINISH: 32 μinch		SCALE: 1:2 PROJECTION:	
		MATERIAL: 6061-T6 Alum FINISH: 32 μinch		DWG. NO. D0901331	
		MATERIAL: 6061-T6 Alum FINISH: 32 μinch		REV. v1	
		MATERIAL: 6061-T6 Alum FINISH: 32 μinch		SHEET 1 OF 1	

D0901331 Base, Ring, Alum Base, Rev. CP, PART PDMX REV. X.001, DRAWING PDMX REV. X.001