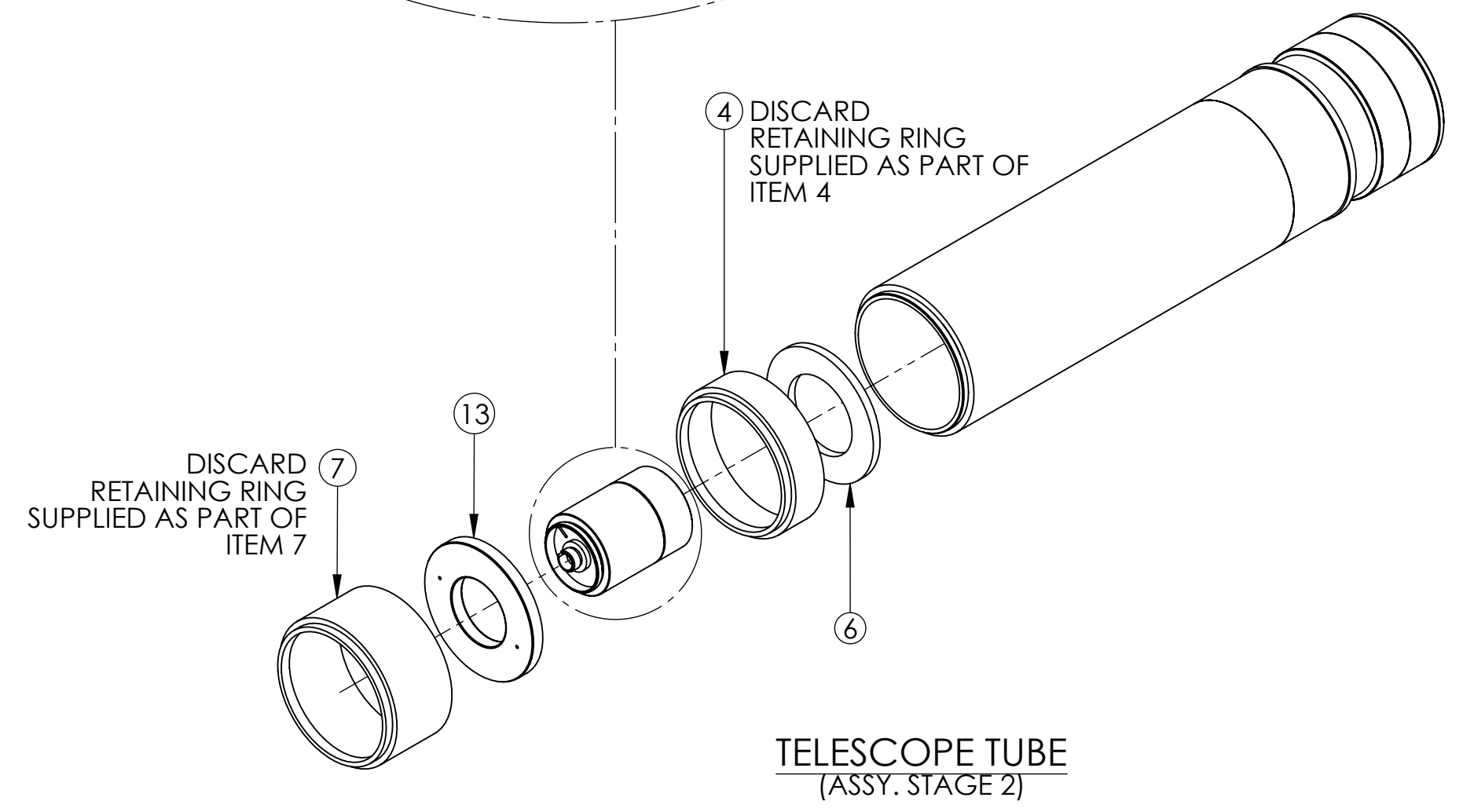
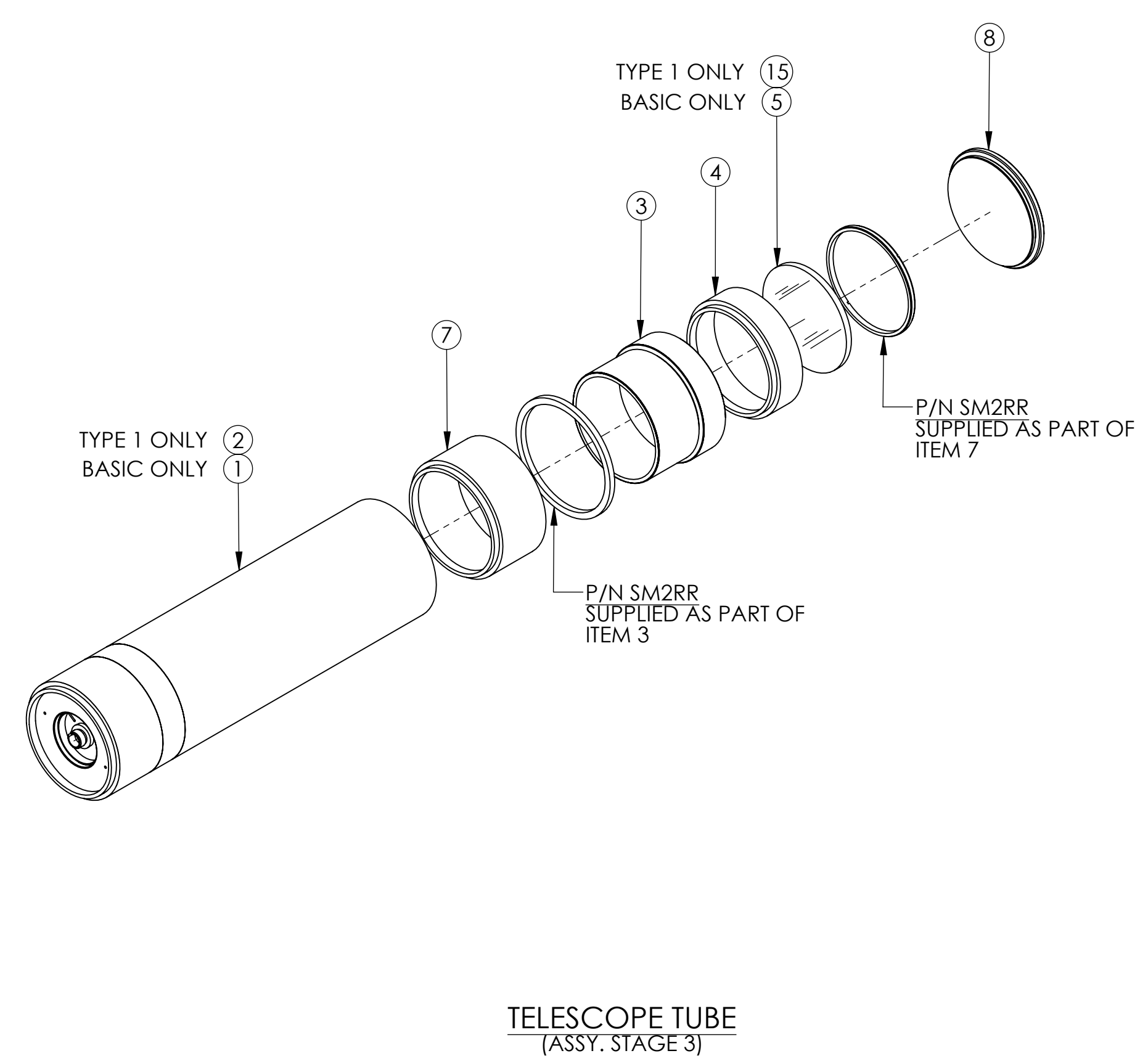
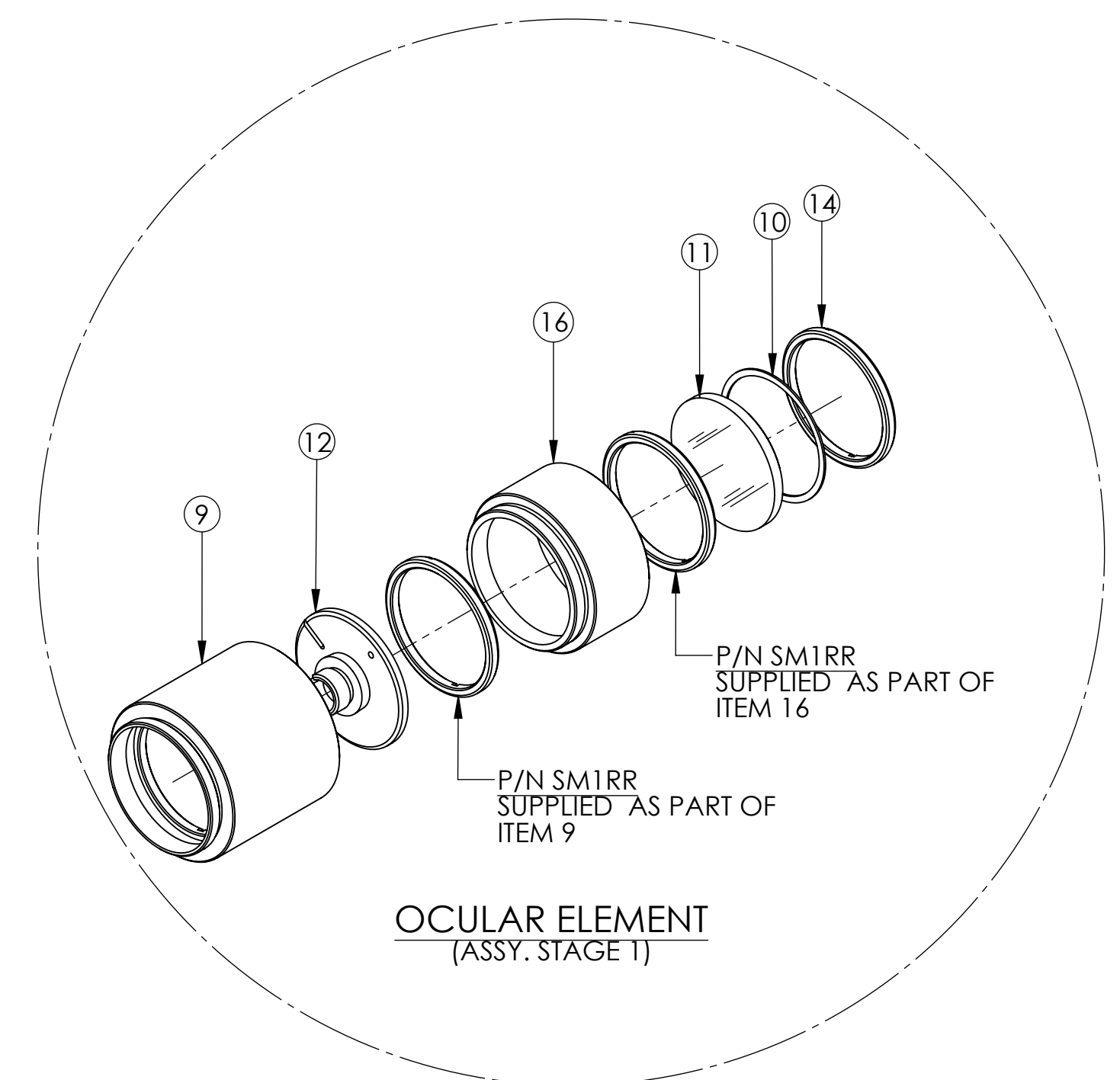
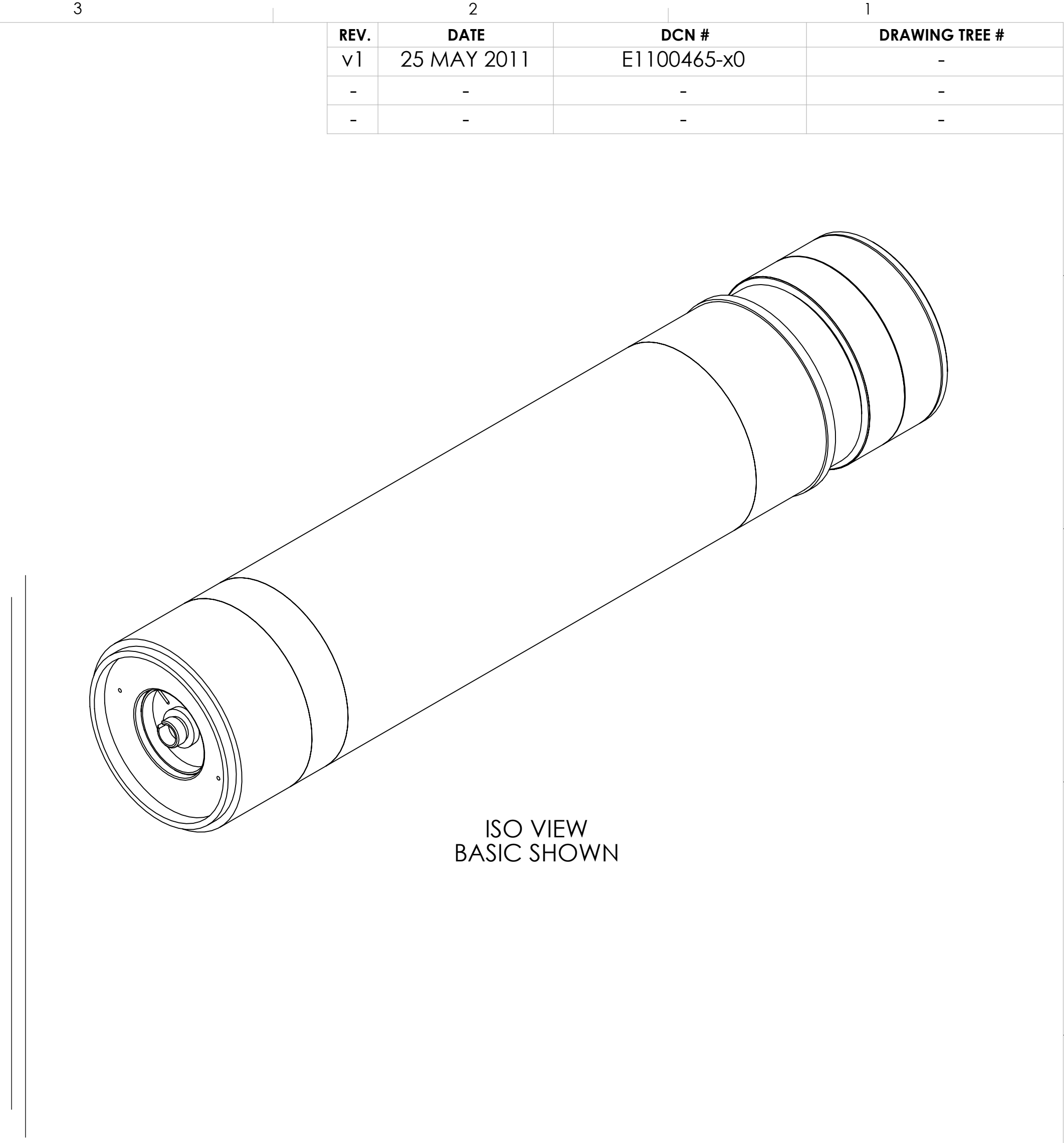
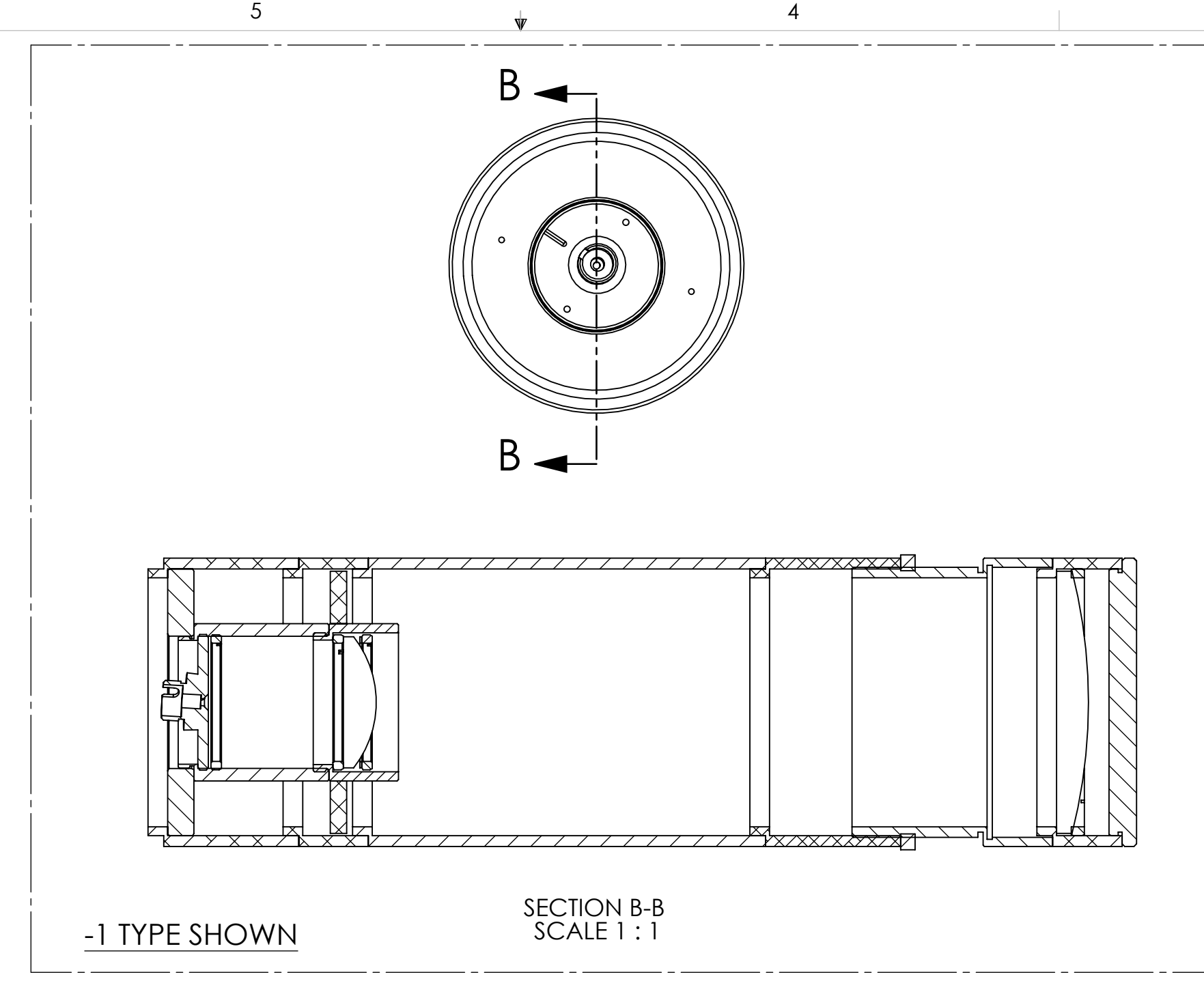
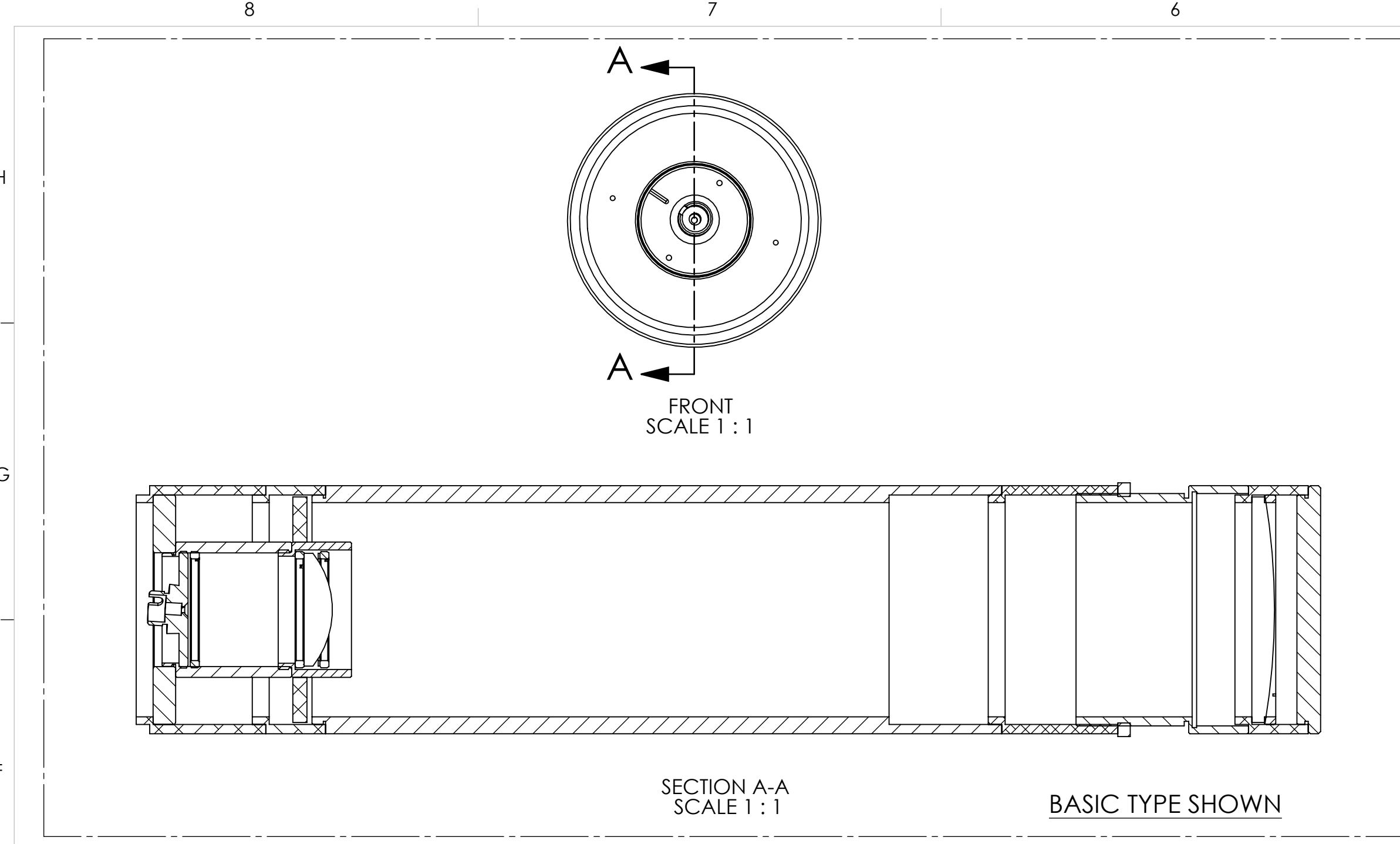


REV.	DATE	DCN #	DRAWING TREE #
v1	25 MAY 2011	E1100465-x0	-
-	-	-	-
-	-	-	-



ITEM NO.	PART NUMBER	DESCRIPTION	D0901362/QTY.	D0901362-1/QTY.
16	SM1L05	SM1 LENS TUBE, .50 THREAD LENGTH	1	1
15	LA1979-A	N-BK7 PLANO-CONVEX LENS, 50.8 mm DIA.	-	1
14	SM1RR	SM1 RETAINING RING	1	1
13	SM2A6	ADAPTER, SM2 TO SM1, THREADED	1	1
12	SM1FCA	SM1 CONNECTOR ADAPTER PLATE, THREADED	1	1
11	LA1422-A	N-BK7 PLANO-CONVEX LENS, 1.0 DIA.	1	1
10	SM1S01	RING, LENS SPACER, .015 THK.	1	1
9	SM1L10	SM1 LENS TUBE, 1.0 LG.	1	1
8	SM2CP2	SM2 SERIES END CAP, EXTERNAL THREAD	1	1
7	SM2L10	SM2 LENS TUBE, 1.0 THREAD DEPTH	2	2
6	2796T15	WASHER, 2.0 OD X 1.0 ID, PTFE	1	1
5	LA1256-A	N-BK7 PLANO-CONVEX LENS, 50.8 mm DIA.	1	-
4	SM2L05	SM2 LENS TUBE, .5 THREAD DEPTH	2	2
3	SM2V10	SM2 LENS TUBE, ADJUSTABLE, 2.0 DIA.	1	1
2	SM2L30	SM2 LENS TUBE, 3.0 LG.	-	1
1	SM2E60	SM2 LENS TUBE, 6.0 LG.	1	-

NOTES AND TOLERANCES: (UNLESS OTHERWISE SPECIFIED)

DIMENSIONS ARE IN INCHES

TOLERANCES:
 .XX ± .01
 .XXX ± .005

ANGULAR ± 1.0°

MATERIAL	N/A	FINISH	N/A μinch
NEXT ASSY	N/A		

LIGO CALIFORNIA INSTITUTE OF TECHNOLOGY MASSACHUSETTS INSTITUTE OF TECHNOLOGY

ALIGO, AOS, OPLEV, ITEM/ETM TELESCOPE ASSY.

DESIGNER	E.JAMES	25 MAY 2011	SIZE	DWG. NO.	REV.
DRAFTER	E.SANCHEZ	25 MAY 2011	D	D0901362	v1
CHECKER					
APPROVAL					

SCALE: 1:2 PROJECTION: SHEET 1 OF 1

D0901362 ALIGO, AOS, OPLEV, ITEM/ETM TELESCOPE ASSY. PART PDM REV. X-000, DRAWING PDM REV. X-000