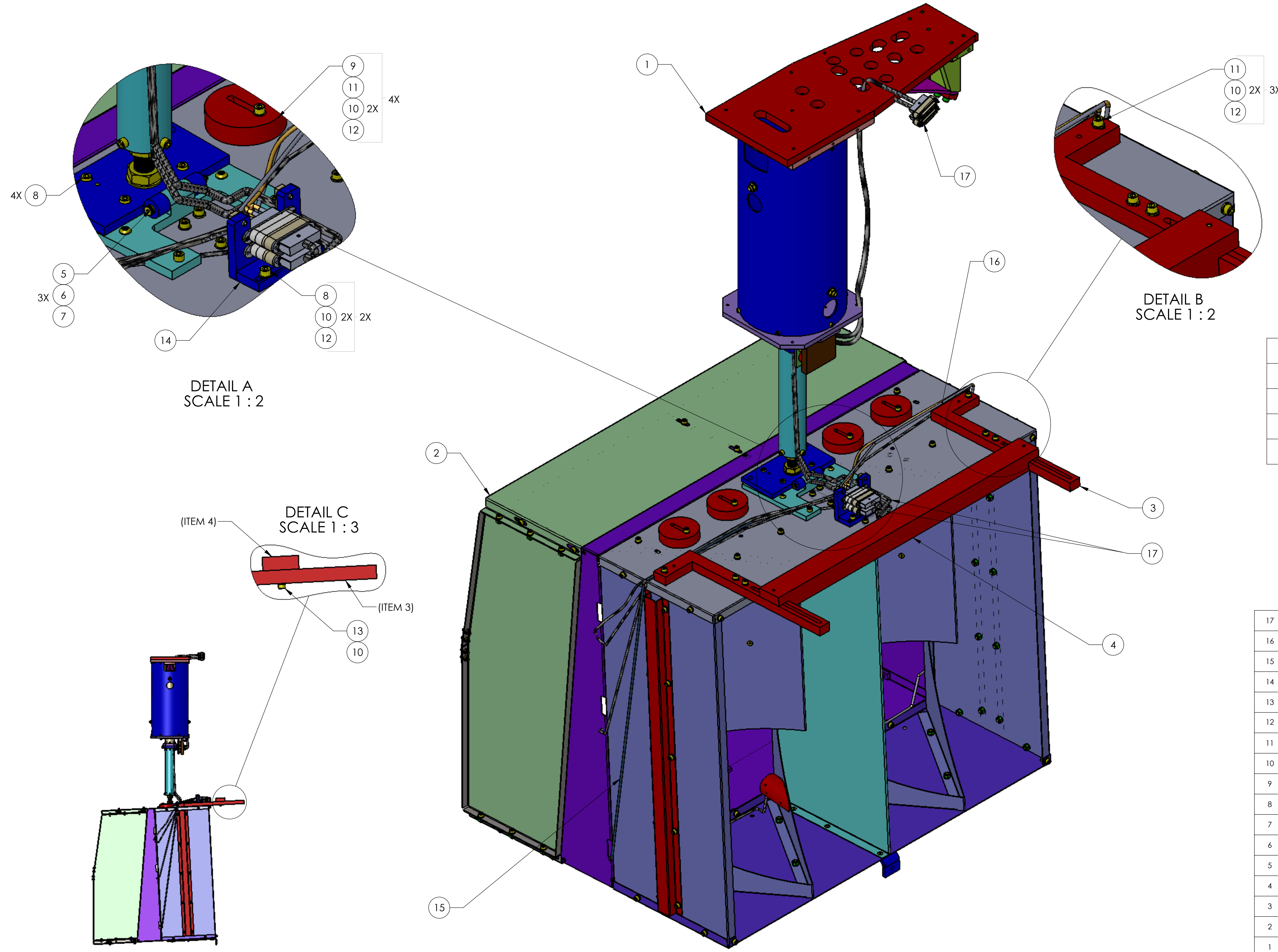


NOTES CONTINUED:

REV.	DATE	DCN #	DRAWING TREE #
v1	20 OCT 2010		E1000674
v2	08 MAR 2011	E1100216	E1000674-v2
v3	29 SEP 2011	E1100335	



PART NUMBER	NEXT SUB-ASSY	CHAMBER/CONF	TOP LEVEL
D0901376	D1002383	BSC9-H1	D0901150
D0901376	D1002277	BSC10-H1	D0901154
D0901376	D1001121	BSC7-H2	D0900405
D0901376	D1001122	BSC8-H2	D0900360

ITEM NO.	PART NUMBER	DESCRIPTION	MATERIAL	QTY.	SPARE	TOTAL				
17	D1003117	SLC PHOTODETECTOR CABLE UPPER ASSY	N/A	2		0				
16	D1003111	SLC PHOTODETECTOR CABLE LOWER ASSY	N/A	1		0				
15	D1003111	SLC PHOTODETECTOR CABLE LOWER ASSY	N/A	1		0				
14	D1001346	ALIGO, ASSY, CABLE BRACKET, HAM TABLE	N/A	1		0				
13	921854A546	SHCS, .25-20 X 1.50 LG., 18-8 SSSL		2		0				
12	N-2520-A	HEX NUT, 1/4-20 THRD SIZE	Ag-PLATED 300 SSSL	12		0				
11	92200A544	SCREW, SHC, .25-20 X 1.25 LG., 300 SSSL, MS16995-53, 92200A544		10		0				
10	-	WASHER, FLAT, 1/4 (NAS 620-C416 OR EQUIVALENT)	300 SSSL	26		0				
9	D1001826	SLC ACB BALANCING WEIGHT	304 SSSL	4		0				
8	92200A541	SHCS, .25-20 x .88, 300 SSSL, MS16995-51	300 SSSL	6		0				
7	N-1024-A	UC COMP, HEX NUT, #10-24, 18-8 SST	18-8 SSSL	1		0				
6	90945A740	McMASTER, WASHER, FLAT, #10, 300 SST, NAS 620-C10L OR EQUIV.	300 SSSL	3		0				
5	D1101293	SHOULDER SCREW #10-24, .25 D X 2.5	18-8 SSSL	1		0				
4	D1100407	ACB ADJUSTABLE COUNTER WEIGHT	304, 316 OR 302 SSSL	1		0				
3	D1100372	ACB COUNTER WEIGHT	304, 316 OR 302 SSSL	2		0				
2	D1000977	ARM CAVITY BAFFLE BOX ASSY	N/A	1		0				
1	D1001011	ARM CAVITY BAFFLE ASSY	N/A	1		0				
				ITEM NO.	PART NUMBER	DESCRIPTION	MATERIAL	QTY.	SPARE	TOTAL

NOTES AND TOLERANCES: (UNLESS OTHERWISE SPECIFIED)
 1. INTERPRET DRAWING PER ASME Y14.5-1994.
 2. REMOVE ALL SHARP EDGES, R.02 MIN.
 3. DO NOT SCALE FROM DRAWING.
 4. ALL MACHINING FLUIDS MUST BE FULLY SYNTHETIC, FULLY WATER SOLUBLE AND FREE OF SULFUR, SILICONE, AND CHLORINE.

DIMENSIONS ARE IN INCHES
 TOLERANCES:
 .XX ±
 .XXX ±
 ANGULAR ± °

MATERIAL N/A FINISH N/A

LIGO CALIFORNIA INSTITUTE OF TECHNOLOGY
 MASSACHUSETTS INSTITUTE OF TECHNOLOGY

SYSTEM ADVANCED LIGO SUB-SYSTEM AOS

NEXT ASSY SEE CHART

PART NAME
 ARM CAVITY BAFFLE FINAL ASSY

DESIGNER	N.Nguyen	10 AUG 2010	SIZE	DWG. NO.	REV.
DRAFTER	TQ. NGUYEN	20 OCT 2010	D	D0901376	v3
CHECKER	M. SMITH	10 NOV 2010			
APPROVAL	D. COYNE	20 NOV 2010	SCALE: 1:4	PROJECTION:	SHEET 1 OF 5

D0901376_AduLIGO_AOS_SLC_ARM_Cavity_Baffle_Final_Assy_PART_PDM_REV-X:195_DRAWING_PDM_REV-X:046

8

7

6

5

4

3

2

1

H

G

F

E

D

C

B

A

H

G

F

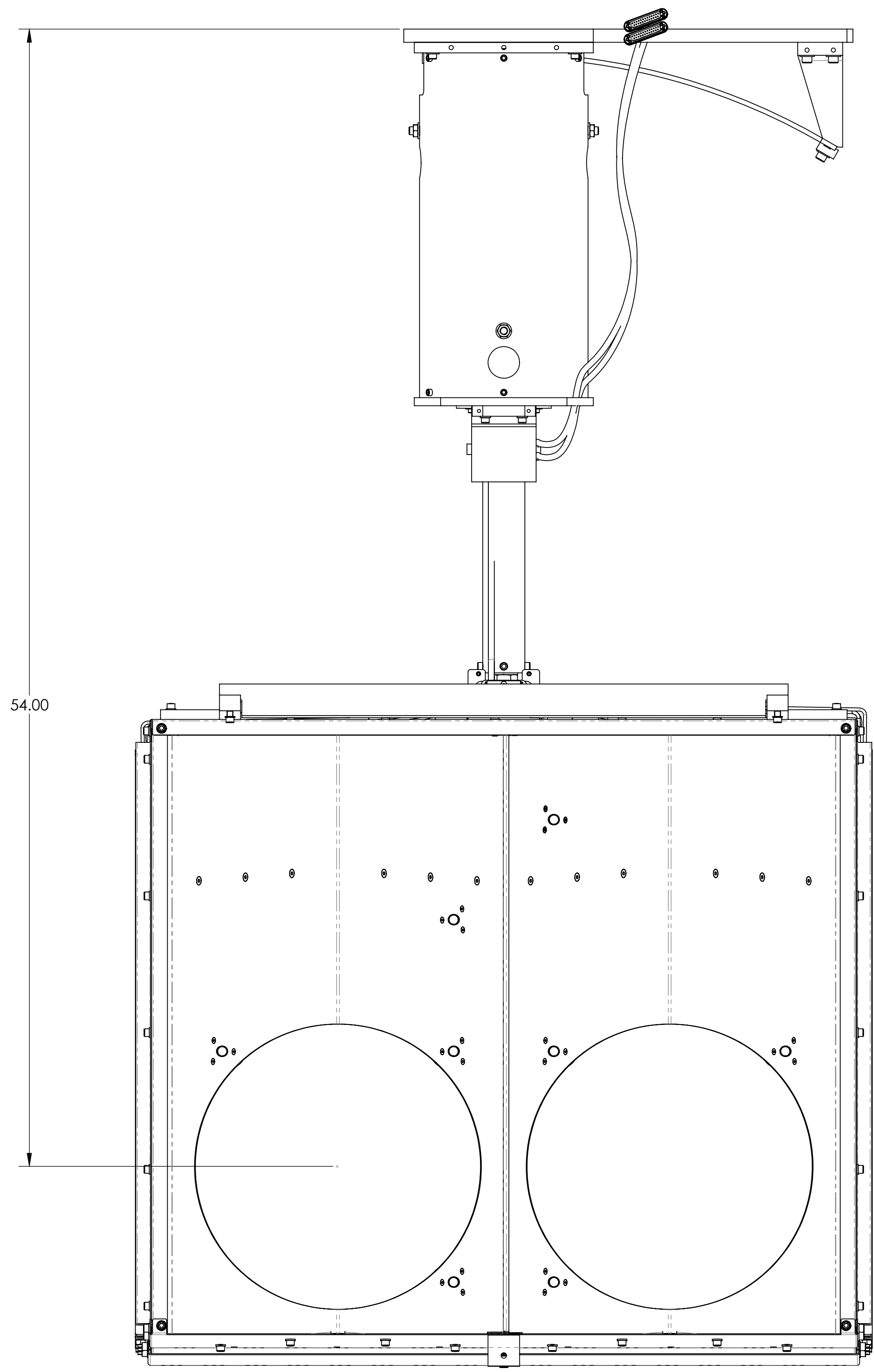
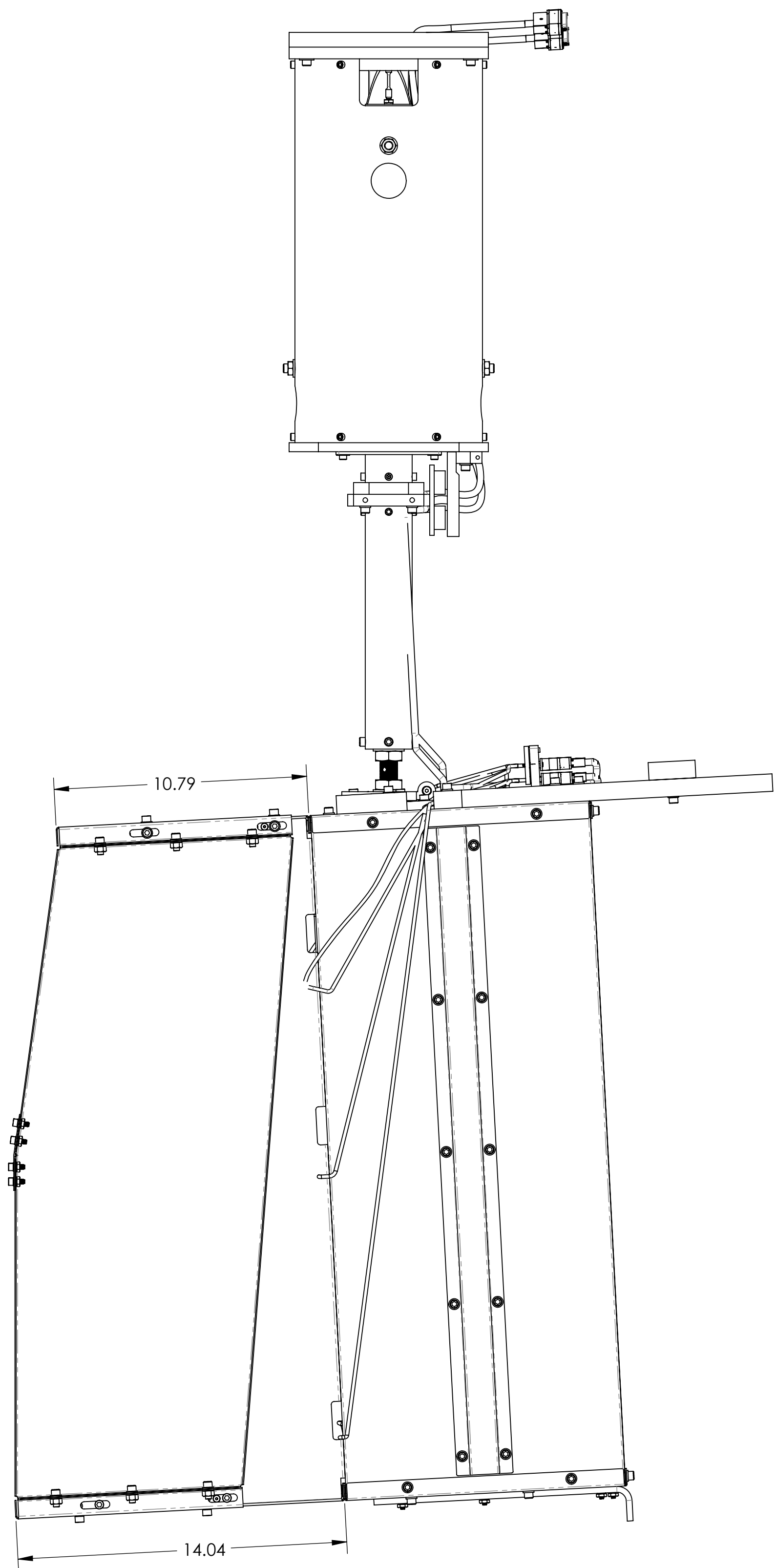
E

D


C

B

A



BSC7-H2

LIGO CALIFORNIA INSTITUTE OF TECHNOLOGY MASSACHUSETTS INSTITUTE OF TECHNOLOGY	
SIZE DWG. NO.	REV.
D D0901376	v3
SCALE: 1:4	PROJECTION:  SHEET 2 OF 5

DD901376_AduLIGO_ACS_SLC_ARM_Coily_Bottle_Fiber_Assy_PAR_PDM_REV_X:175_DRAWING_PDM_REV_X:046

8

7

6

5

4

3

2

1

H

G

F

E

D

C

B

A

H

G

F

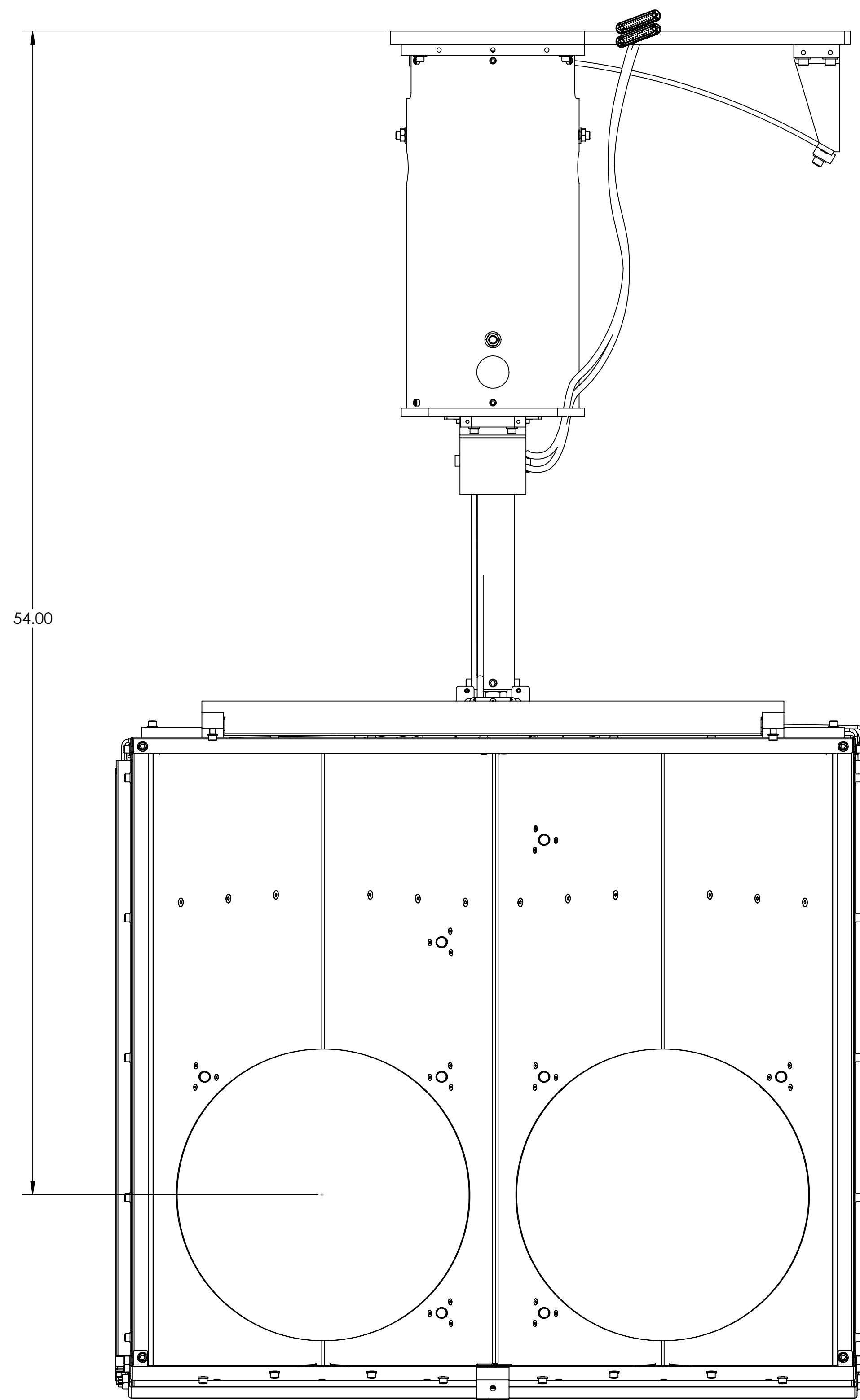
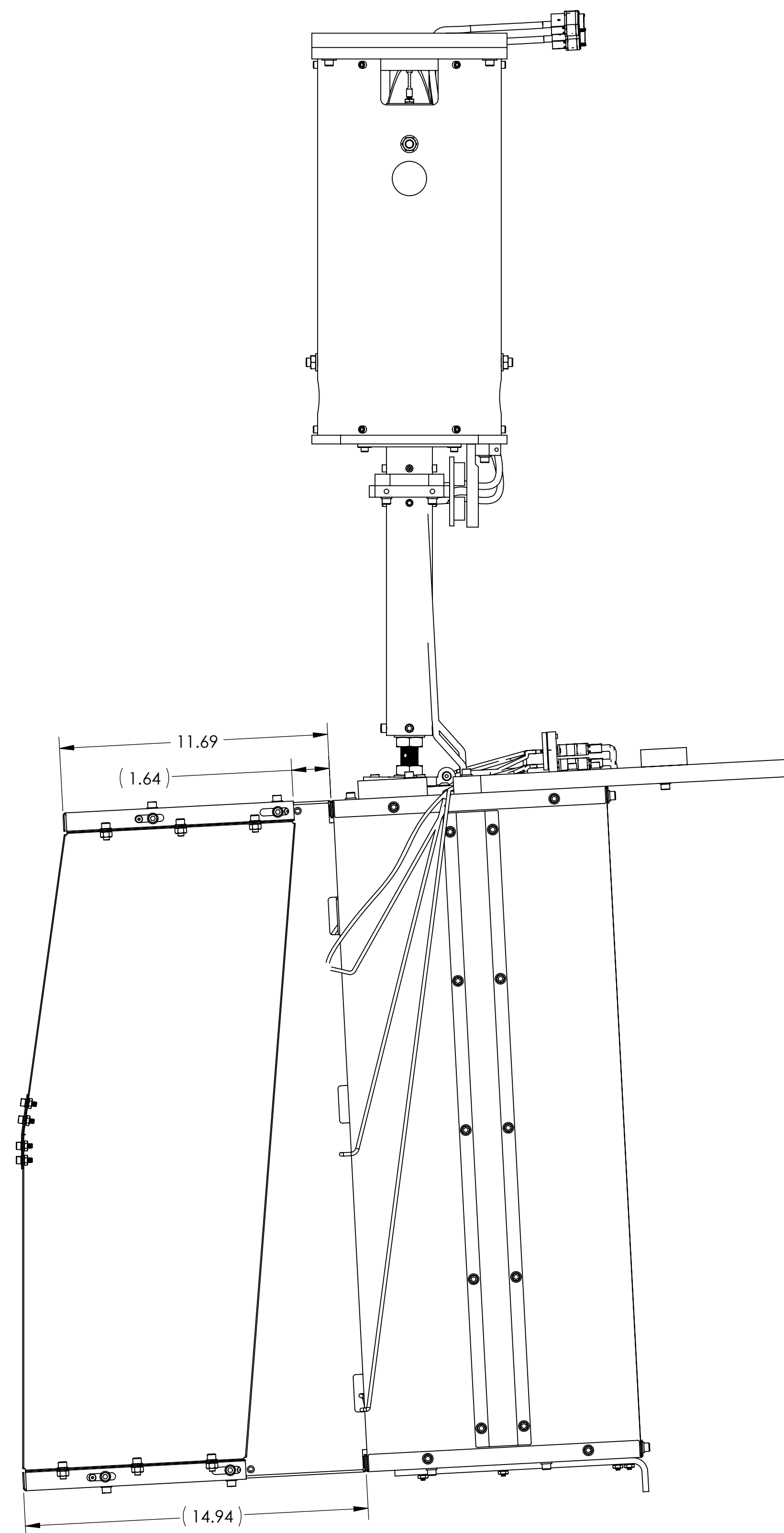
E

D

C

B

A



BSC8-H2

LIGO CALIFORNIA INSTITUTE OF TECHNOLOGY MASSACHUSETTS INSTITUTE OF TECHNOLOGY	
SIZE DWG. NO.	REV.
D D0901376	v3
SCALE: 1:1	PROJECTION: SHEET 3 OF 5

8

7

6

5

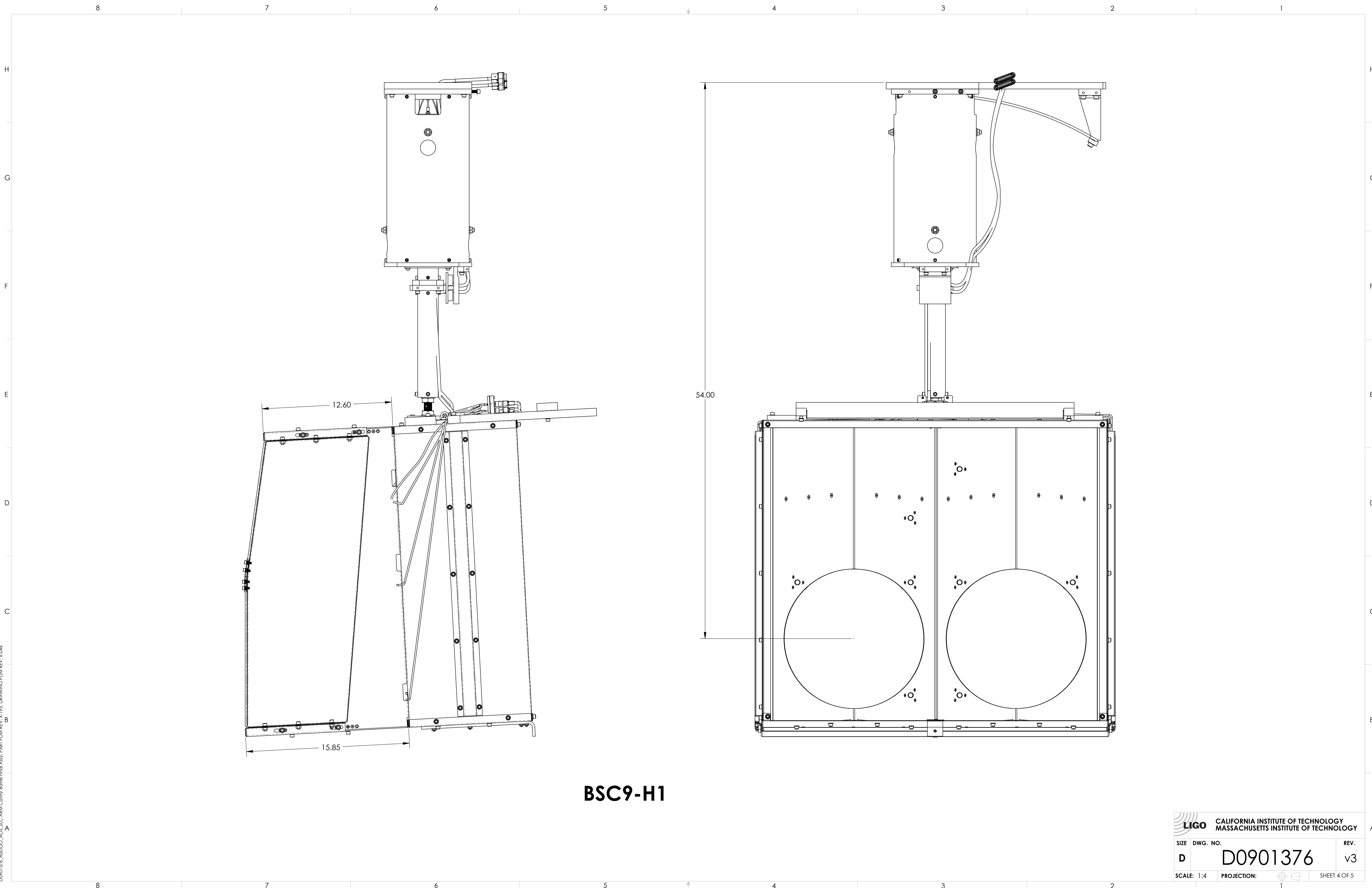
4

3

2

1

DD901376_AduLIGO_AOS_SLC_ARM_Covily_Bottle_FitAsy_PART_PDM_REV:K:175_DRAWING_PDM_REV:X:046



BSC9-H1

		CALIFORNIA INSTITUTE OF TECHNOLOGY MASSACHUSETTS INSTITUTE OF TECHNOLOGY	
SIZE	DWG. NO.	REV.	
D	D0901376	v3	
SCALE: 1:4	PROJECTION:	SHEET 4 OF 5	

DD901376_AduLIGO_ACS_SLC_ARM_Coily_Bottle_Fiber_Assy_PART_PDM_REV_X:175_DRAWING_PDM_REV_X:046

8

7

6

5

4

3

2

1

H

G

F

E

D

C

B

A

H

G

F

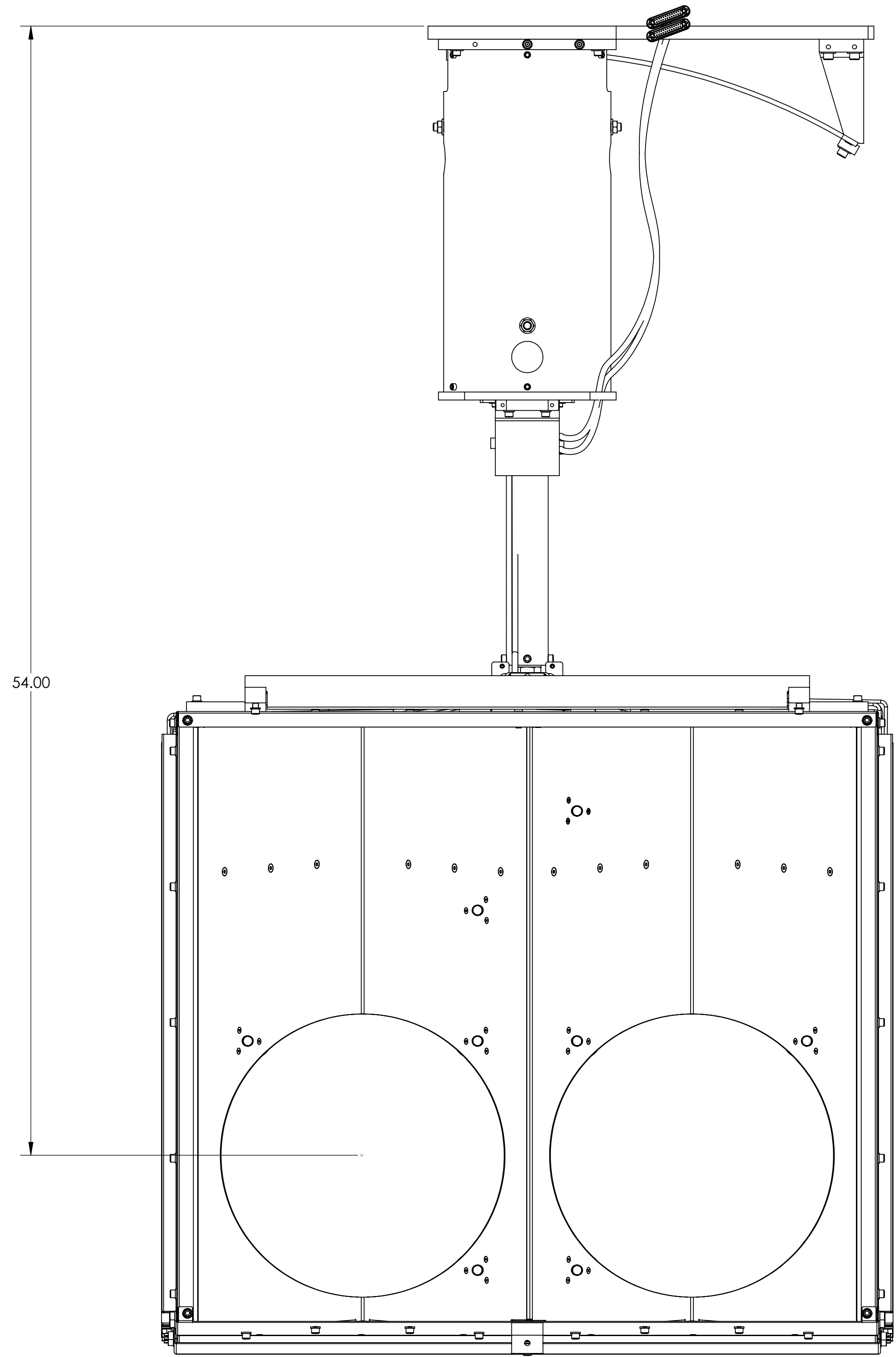
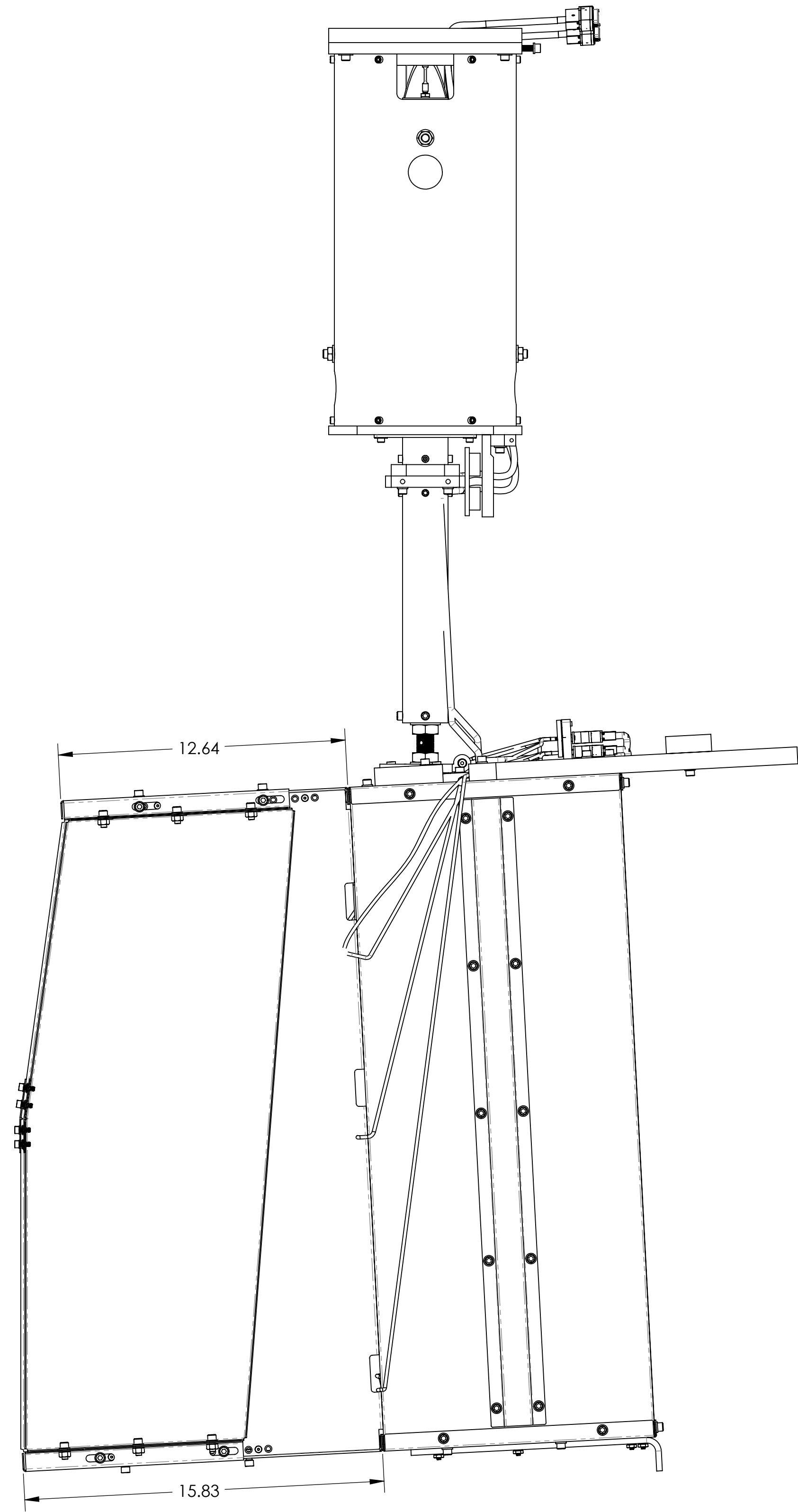
E

D

C

B

A



BSC10-H1

LIGO CALIFORNIA INSTITUTE OF TECHNOLOGY MASSACHUSETTS INSTITUTE OF TECHNOLOGY	
SIZE DWG. NO.	REV.
D D0901376	v3
SCALE: 1:4	PROJECTION: SHEET 5 OF 5

DD901376_AduLIGO_AOS_SLC_ARM_Coily_Bottle_Fiber_Assy_PART_PDM_REV.X:175_DRAWING_PDM_REV.X:046