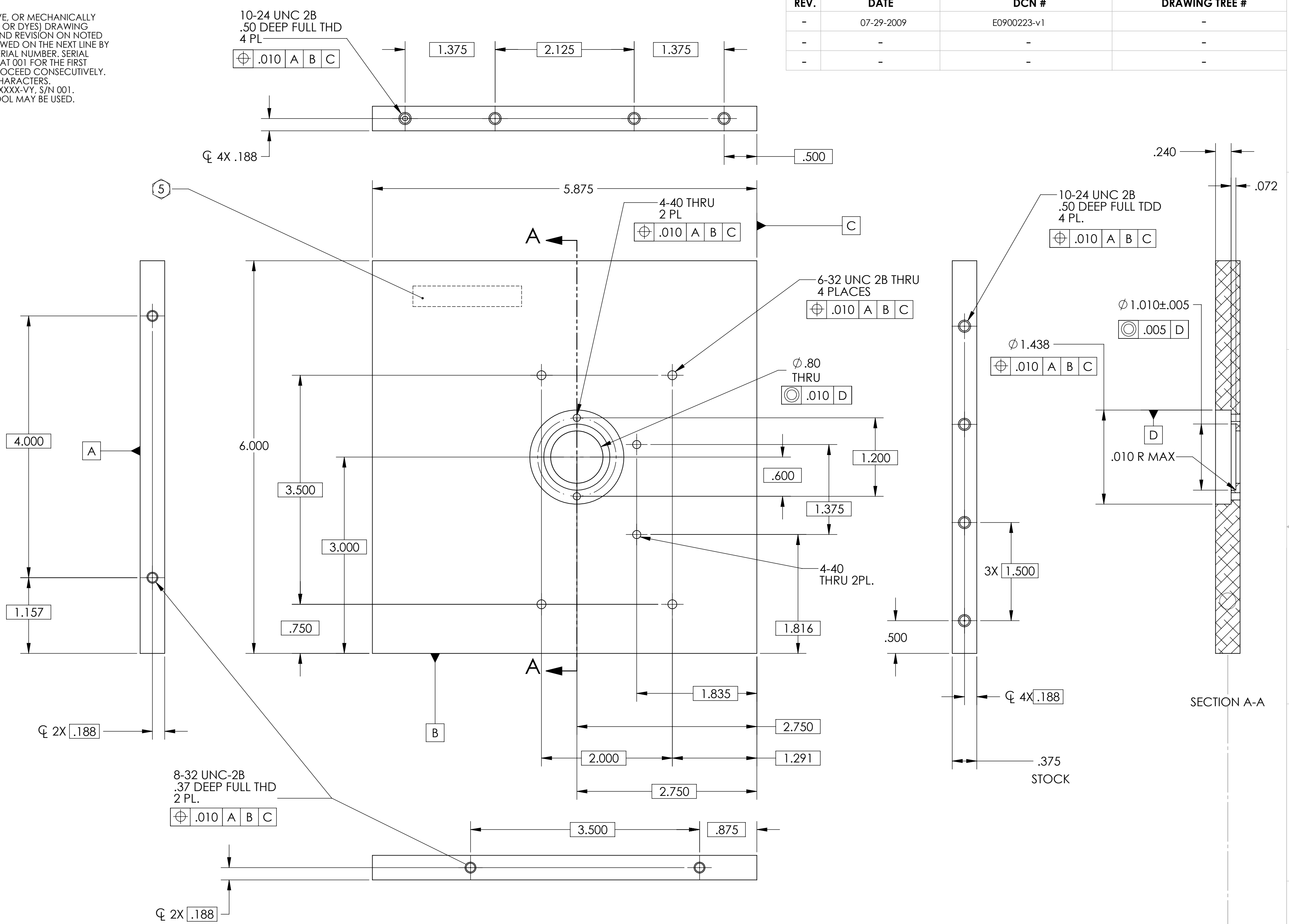


⑤ SCRIBE, ENGRAVE, OR MECHANICALLY STAMP (NO INKS OR DYES) DRAWING PART NUMBER AND REVISION ON NOTED SURFACE FOLLOWED ON THE NEXT LINE BY A THREE DIGIT SERIAL NUMBER. SERIAL NUMBERS START AT 001 FOR THE FIRST ARTICLE AND PROCEED CONSECUTIVELY. USE .07" HIGH CHARACTERS. EXAMPLE: DXXXXXXX-VY, S/N 001. A VIBRATORY TOOL MAY BE USED.

REV.	DATE	DCN #	DRAWING TREE #
-	07-29-2009	E0900223-v1	-
-	-	-	-
-	-	-	-



NOTES AND TOLERANCES: (UNLESS OTHERWISE SPECIFIED)

- INTERPRET DRAWING PER ASME Y14.5-1994.
- REMOVE ALL SHARP EDGES, R.02 MIN.
- DO NOT SCALE FROM DRAWING.
- ALL MACHINING FLUIDS SHALL BE WATER SOLUBLE AND FREE OF SULFUR, CHLORINE AND SILICONE, SUCH AS CINCINNATI MILACRON'S CIMTECH 410.

MATERIAL: 6061-T6
FINISH: N/A

LIGO CALIFORNIA INSTITUTE OF TECHNOLOGY
MASSACHUSETTS INSTITUTE OF TECHNOLOGY

SYSTEM: ADVANCED LIGO
SUB-SYSTEM: AOS
NEXT ASSY: D0901417

PART NAME: ADLIGO_TCS_LASER_ENCLOSURE_APERTURE_PL

DESIGNER: KMAILAND	DATE: 07-15-2009	SIZE: c	DWG. NO.: D0901428	REV.: v1
DRAFTER: KMAILAND	DATE: 07-19-2009	SCALE: 1:1	PROJECTION:	SHEET 1 OF 1
CHECKER:				
APPROVAL:				

DIMENSIONS ARE IN INCHES

TOLERANCES:
.XX $\pm .02$
.XXX $\pm .005$

ANGULAR $\pm 1.0^\circ$