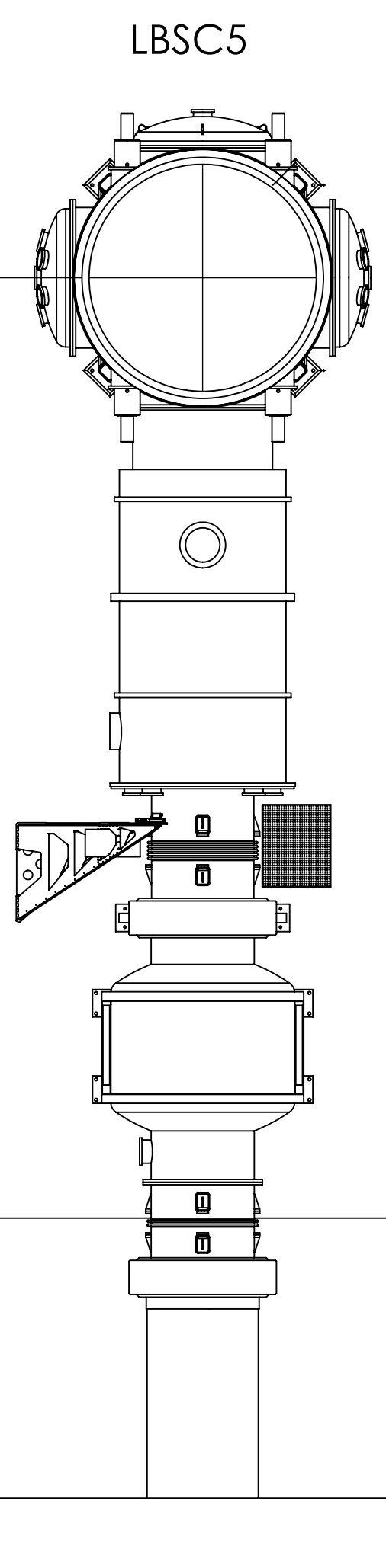
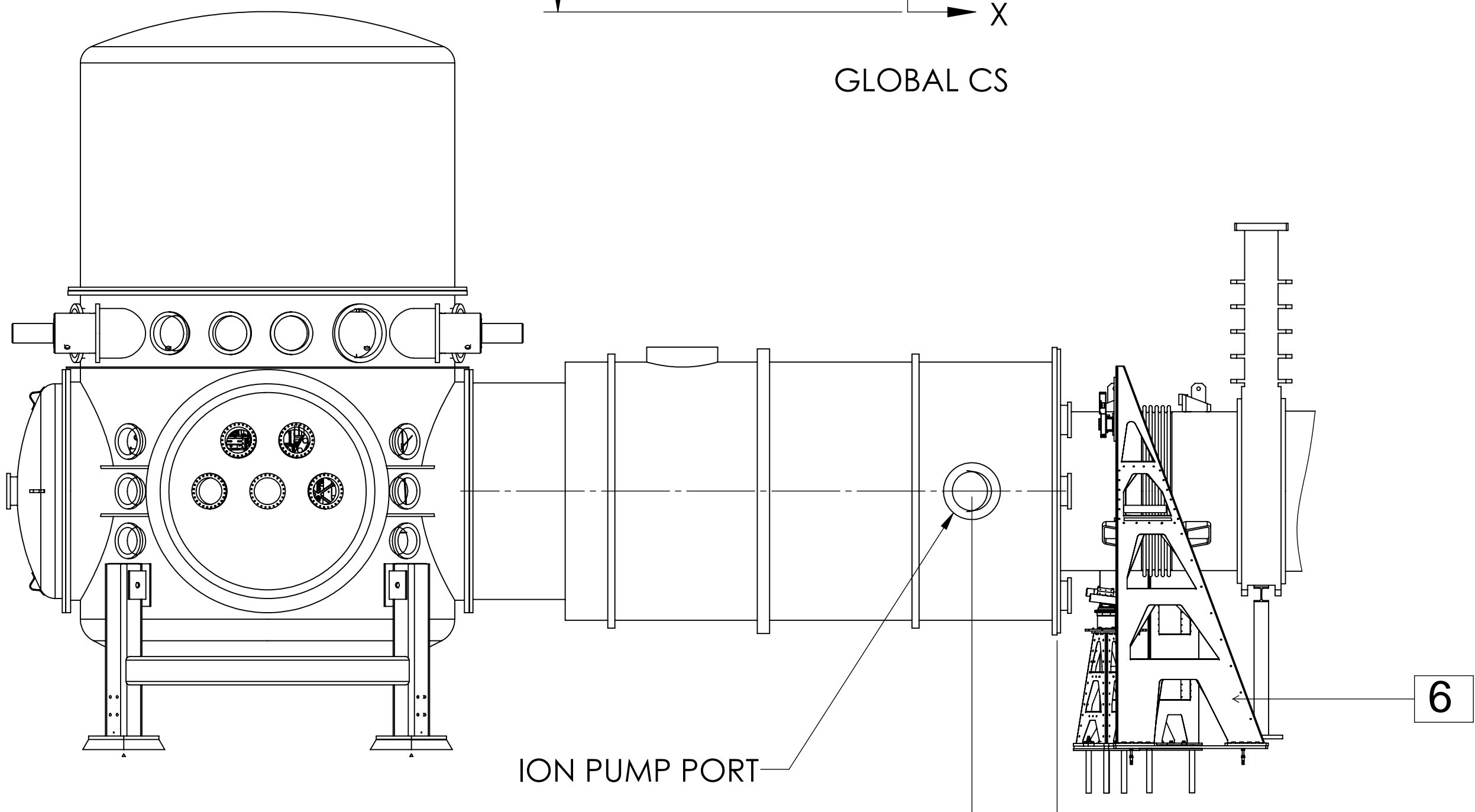
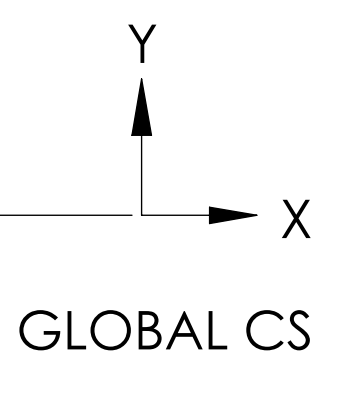


LLO Y-END STATION



4000000mm

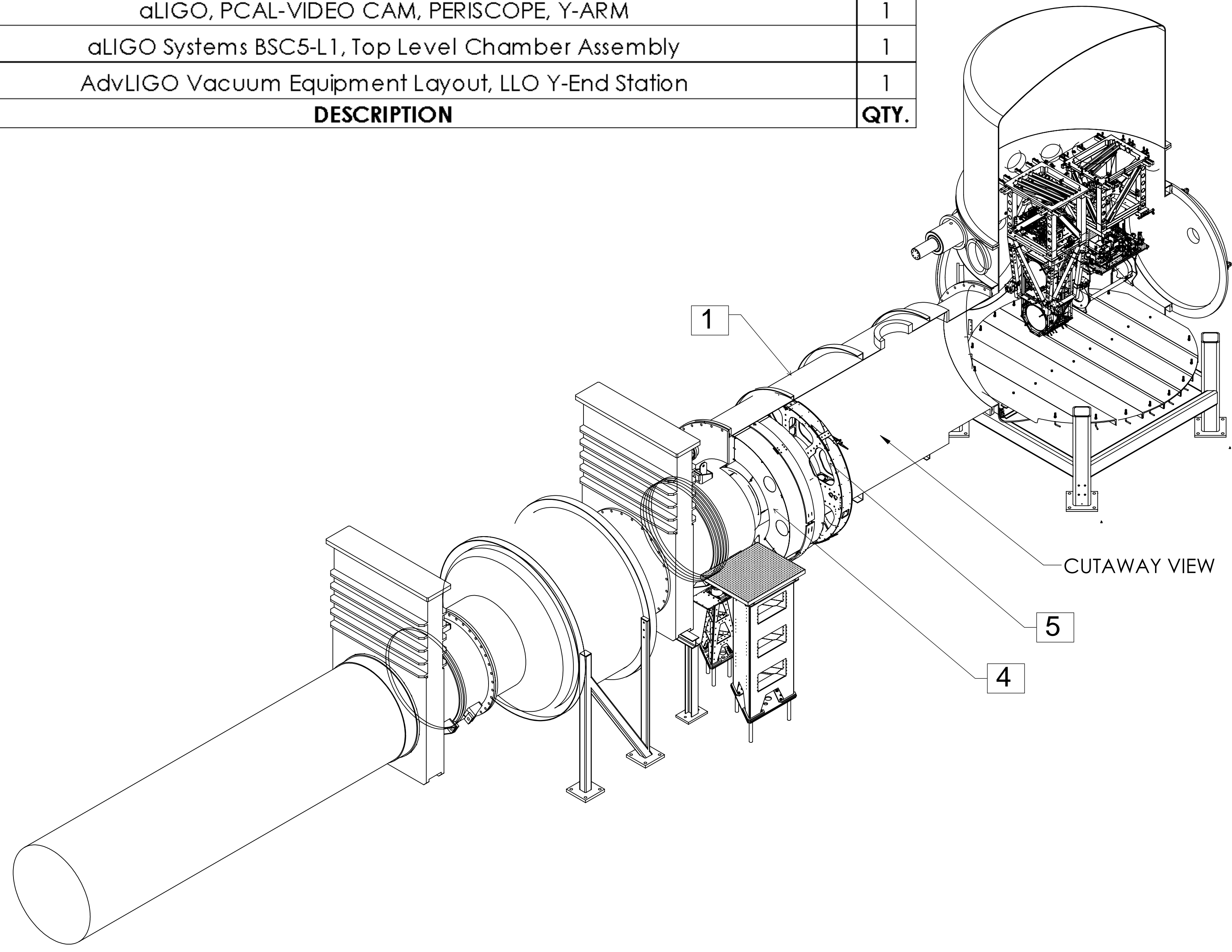


LEFT SIDE VIEW

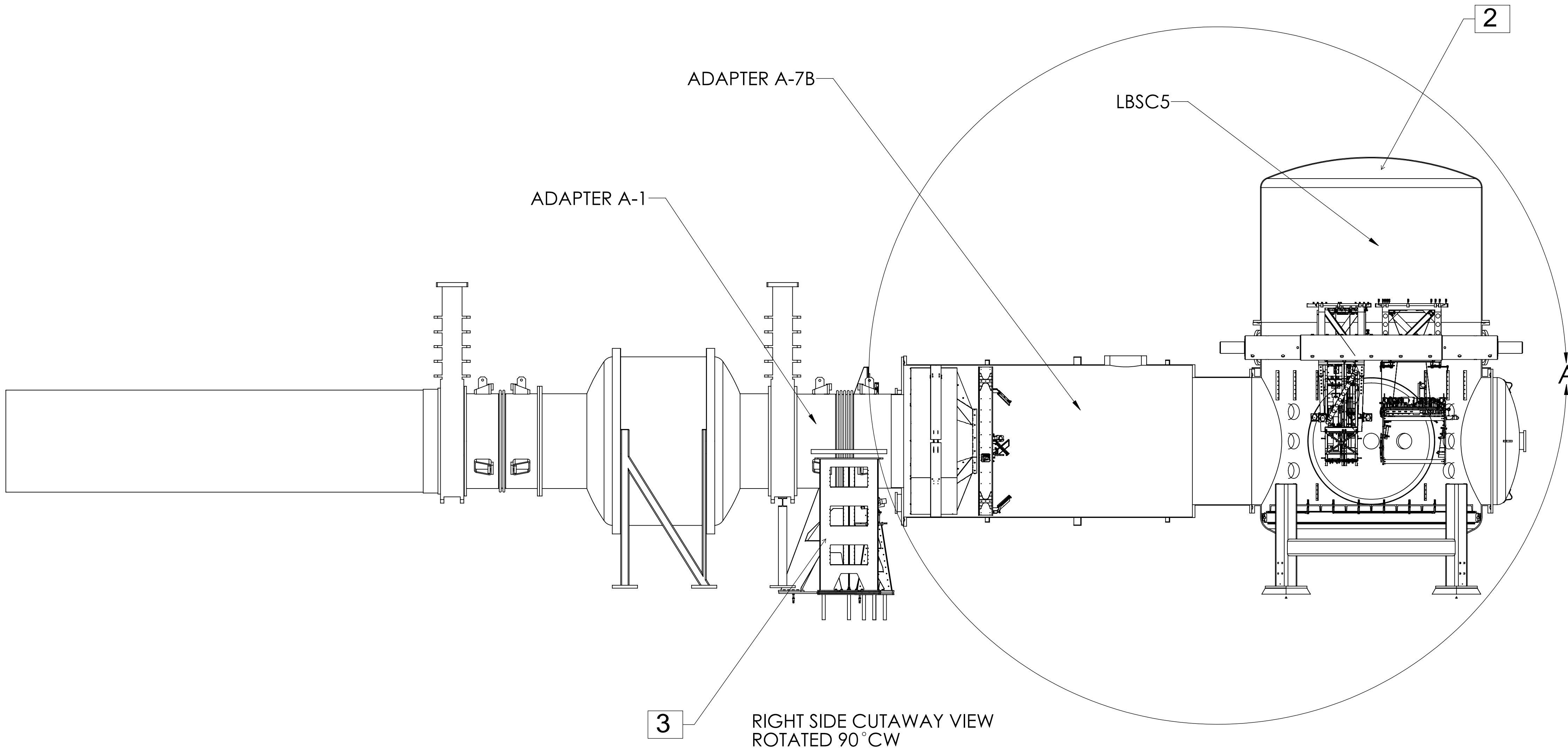
ITEM NO.	PART NUMBER	DESCRIPTION	QTY.
7	G1000702	Floor Occupancy, OpLev & PCal, LLO Y-End Station	1
6	D1000375	aLIGO AOS Fully Detailed & Envelope for OpLev & Pcal Installations (ETMY- LHO, LLO)	1
5	D1200174	aLIGO, PCAL-VIDEO CAM, PERISCOPE	1
4	D1003228	MANIFOLD CRYO BAFFLE ASSY, ETM Y	1
3	D1000676-02	aLIGO, PCAL-VIDEO CAM, PERISCOPE, Y-ARM	1
2	D0900506	aLIGO Systems BSC5-L1, Top Level Chamber Assembly	1
1	D0901861	AdvLIGO Vacuum Equipment Layout, LLO Y-End Station	1

LIST OF SUSPENSION	
LLO- L1	OPTIC(s)
BSC5	ETMY

REV.	DATE	DCN #	DRAWING TREE #
V3	18 OCT 2012	-	-
v5	09 APR 2014	-	-
-	-	-	-



CUTAWAY VIEW



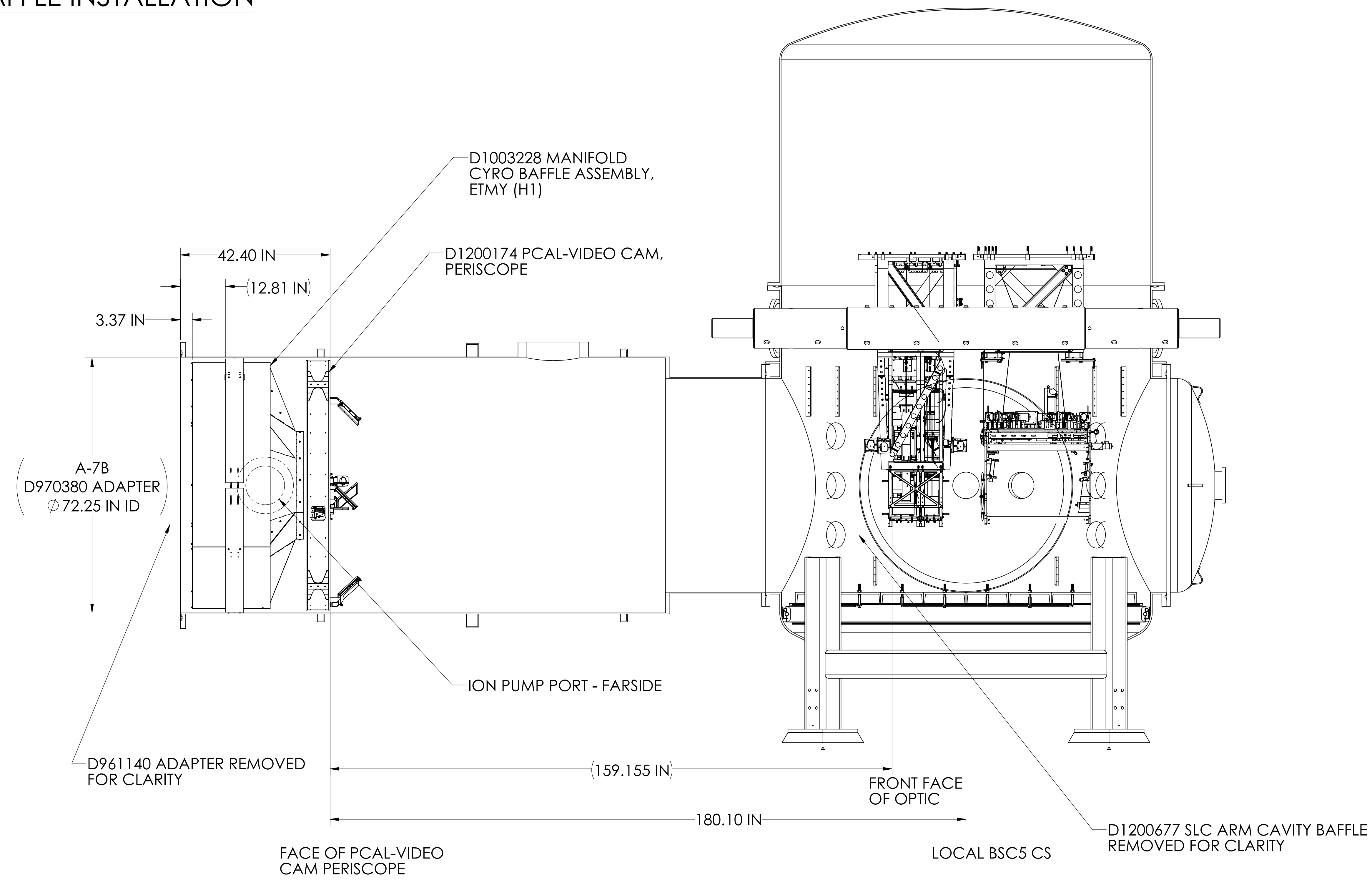
RIGHT SIDE CUTAWAY VIEW ROTATED 90° CW

SHEET 2

- 1) REFER TO LIGO D1201550 FOR aLIGO, CARTRIDGE & CLEAN ROOM LAYOUT.
- 2) ALL ITEMS SHOWN FOR VISUAL PURPOSES ONLY. PLEASE REFER TO P/N LISTED IN THE BOM FOR DETAILS.
- 3) FOR RACK, CABLE TRAY LAYOUT AND EXTERNAL OPTIC TS TABLE REFER TO REFER TO D1201231.

<p>NOTES AND TOLERANCES: (UNLESS OTHERWISE SPECIFIED)</p> <p>1. INTERPRET DRAWING PER ASME Y14.5-1994</p> <p>2. REMOVE ALL SHARP EDGES, .005-.015, FOR MACHINED PARTS. ROUND ALL EDGES APPROXIMATELY R.02 FOR SHEET METAL PARTS.</p> <p>3. DO NOT SCALE FROM DRAWING</p> <p>4. ALL MACHINING FLUIDS MUST BE FULLY SYNTHETIC, FULLY WATER SOLUBLE AND FREE OF SULFUR, SILICONE, AND CHLORINE.</p>		<p>CALIFORNIA INSTITUTE OF TECHNOLOGY MASSACHUSETTS INSTITUTE OF TECHNOLOGY</p>		<p>PART NAME SYSTEM LAYOUT, LLO Y-END STATION</p>	
<p>DIMENSIONS ARE IN INCHES</p> <p>TOLERANCES: .XX ± .01 .XXX ± .005</p> <p>ANGULAR ± 0.5°</p>		<p>SYSTEM ADVANCED LIGO</p>		<p>SUB-SYSTEM SYS</p>	
<p>MATERIAL --</p>		<p>FINISH -- μinch</p>		<p>NEXT ASSY D0901490</p>	
<p>DESIGNER K. BUCKLAND</p>		<p>DATE 18 OCT 2012</p>		<p>SIZE DWG. NO. E D0901464</p>	
<p>CHECKER</p>		<p>APPROVAL</p>		<p>SCALE: 1:32 PROJECTION: </p>	
<p>REVISIONS</p>		<p>REV. NO. v5</p>		<p>SHEET 1 OF 2</p>	

PCAL & MAINFOLD CYRO BAFFLE INSTALLATION



DETAIL A
SCALE 1 : 16

GENERAL PCAL-VIDEO CAM PERISCOPE & MANIFOLD CYRO BAFFLE INSTALLATION INSTRUCTIONS:

1. REMOVE D961140 A-1 ADAPTER.
2. INSTALL D1200174 PCAL ASSEMBLY INTO D970380 A-7B ADAPTER
3. INSTALL D1003228 MANIFOLD CYRO BAFFLE ASSEMBLY INTO D970380 A-7B ADAPTER

